

ISSW
2018
INNSBRUCK

**international
snow
science
workshop**

October 7-12
Innsbruck



The Conference

The ISSW (International Snow Science Workshop) is the largest snow and avalanche conference world-wide. It has been held out 21 times in North America and Europe since 1976, Innsbruck being its third European venue. The success of the ISSW lies in its motto: 'A Merging of Theory and Practice'. Advances in snow and avalanche science and reports from the field are both essential elements of the conference – scientific knowledge meets practical experience. The Innsbruck 2018 conference consequently builds on this idea, trying to raise the merging process to a new level by numerous activities.

All aspects of the unique setting and ambience of Innsbruck – an urban center surrounded by steep mountain slopes – support a successful organization and performance of the ISSW. A large variety of winter-related industry of world wide standing, an extensive history of hosting large international events (including two winter olympic games) and numerous reputable ski areas pave the way for an attractive conference week. The large accompanying exhibition will further enhance the local and international value of the ISSW 2018.

In order to further promote the ISSW-motto, one day of the conference will for the first time be dedicated to: 'ISSW goes public'. Local and international experts will be invited to this event to discuss essential issues like 'management of sustainable living space in the Alps'. The event's thematic focus will be organized in close cooperation with the Alpine convention.

The Conference Participants

About 1000 international and national participants are expected to join the ISSW 2018. These will include scientists, mountain guides, safety managers and decision makers, representing the typically broad audience of the ISSW. Additionally, the ISSW 2018 particularly addresses:

- 1. Young researchers and practitioners:** Special criteria and offers will be presented at the beginning of the official call.
- 2. Team workers:** Submissions of team results (scientists and practitioners) will have high priority
- 3. Engineers:** Training programs will be offered, not only for mountain or ski guides, but also for engineers and safety managers (e.g. risk assessment, safety concepts for buildings)

Particularly noteworthy is the extended exhibition at ISSW 2018 to attract practitioners, scientists, authorities and students.

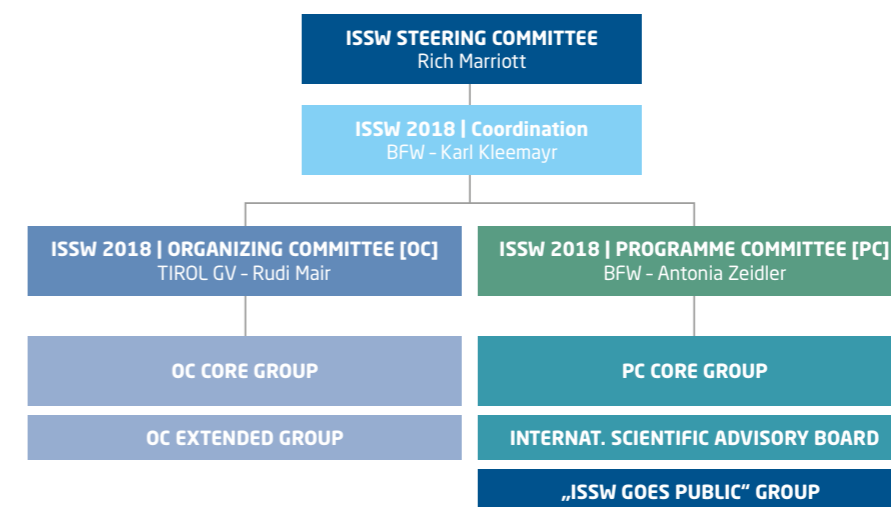
Program content

- 1. Presentations**
In the morning sessions the state of the art in classical ISSW issues will be presented: Climate, snow pack, snow mechanics, avalanche dynamics, modeling, forecasting, risk management, accidents and rescue, optimization of protection measures, safety instructions or education. The Innsbruck ISSW will have a special focus on young researchers as well as presentations carried out by teams of scientists and practitioners.
- 2. Interactive poster sessions, workshops and discussions**
The afternoon sessions will be characterized by workshops and debates. Selected topics will be discussed from different viewpoints in order to outline the deficits, needs or simply the practicability of methods or results. For the first time at an ISSW, interactive poster sessions will be held, enabling direct communication between the presenters and small groups of the audience.
- 3. Training program**
In the late afternoon and evening sessions, continuous education and training programs will be held dealing with a wide range of practice-oriented topics: e.g. avalanche education, forecasting and simulation, risk assessment, planning and constructions principles for endangered obstacles.

- 4. Field trips**
Numerous field trips will be offered, combining nature experience with educational highlights. Spectacular outdoor activities will be connected to interesting sites and facts. This will guarantee interesting experiences from both the user side as well as the risk management and control side. Cultural, historical or touristic highlights touched 'incidentally' by the excursions will guarantee unforgettable moments.
- 5. ISSW goes public**
More or less all ISSW topics can easily be linked to the challenges of managing living space in mountainous areas like Tyrol. Decision-makers from public institutions and authorities want to know and need to be informed about recent research results or the most important practical experiences to aid sustainability. On Wednesday, October 10, 2018, the existing strategies and deficits, the chances and challenges will be discussed with a broad audience. Results and conclusions will be summarized in a special report.
- 6. Accompanying exhibition**
The accompanying exhibition will be organized by studio12 gmbh. It will be a key element of the ISSW 2018 where numerous industries, companies and engineering offices will be represented.

Organisation and Partners

The submitting applicants (as proclaimed at the ISSW BANFF 2014) jointly organize the ISSW 2018: BFW (Federal Research Center for Forests, Department of Natural Hazards, Innsbruck), Avalanche Warning Center Tyrol, WLV (Forest Technical Service of Torrent and Avalanche Control) and SnowHow. Karl Kleemayr (BFW) is responsible for the general coordination and communicates with the ISSW Steering Committee.



Similarly to earlier ISSW conferences, two committees have been established.

- 1. Organizing Committee (OC):**
Under the responsibility of Rudi Mair (Avalanche Warning Center Tyrol) all organizational decisions of the committee are made. Core members are: Avalanche Warning Center Tyrol, G. Walter – WLV, K. Kranebitter – SnowHow, I. Kähler und M. Walter – Congress und Messe Innsbruck GmbH, R. Kerschbaumer – studio12 gmbh. The committee is supported on a case by case basis by representatives of the Tyrolean government and relevant representatives.
- 2. Program committee (PC):**
Under the responsibility of Antonia Zeidler (BFW, Snow and Avalanche Unit) the program committee (PC) determines the thematic focus of ISSW 2018 and coordinates the abstract review process. The PC is supported by the international scientific advisory board lead by P. Gauer (NGI – Norwegian Geotechnical Institute).

Son Oct 7

„icebreaker“
meet & greet

ISSW
2018
INNSBRUCK

Mon

Tue

Wed

Thu

Fri

SNOW - AVALANCHES
Fundamentals - Processes - Modeling

MORNING

- Climate
- Monitoring
- Snow mechanics
- Avalanche dynamics
- Modelling
- Forecast

AFTERNOON

- Discussions
- Workshops, interactive poster session
- Training sessions and educational program

EVENING

- Training sessions and educational program
- Board meetings

FIELD TRIPS
Tyrol and South Tyrol

ISSW goes PUBLIC

- Land use planning and risk management
- Challenges and strategies
- Discussions with invited local and international speakers representing public, tourist industry, decision makers and science

PROTECTION - PREVENTION
Risk management

MORNING

- Selected presentations
- Protection strategies
- Risk management
- Optimization of measures
- Technologies and tools
- Field guidelines
- Education

AFTERNOON

- Discussions
- Workshops, i.a. posters
- Training sessions

EVENING

- ISSW 2018 Banquet

party

ISSW 2018 Organizer

Austrian Research Centre for Forests
Avalanche Warning Service Tyrol
Austrian Service for Torrent and Avalanche Control
SnowHow



Congress Venue

The ISSW 2018 be held at
Congress Innsbruck
Rennweg 3, 6020 Innsbruck, Austria
W: www.cmi.at



Congress Organizer

PCO Tyrol Congress
Rennweg 3, 6020 Innsbruck, Austria
T: +43 (0) 512 575 600 F: +43 (0) 512 565 707
E: issw2018@cmi.at W: www.pco-tyrolcongress.at



Exhibition Management & Sponsoring

S12! studio12 gmbh
Kaiser Josef Straße 9, 6020 Innsbruck, Austria
T: +43 (0) 512 890 438 F: +43 (0) 512 890 438 15
E: ker@studio12.co.at W: www.studio12.co.at

