



# PARAMOUNT – A Local Based Service (LBS) Prototype for Mountaineers and Rescuers

**Nik Klever, Bergwacht Bayern  
([www.bergwacht-bayern.de](http://www.bergwacht-bayern.de))**

**Gebhard Barbisch, Österreichischer Bergrettungsdienst  
([www.bergrettung.at](http://www.bergrettung.at))**

**ICAR Conference 2003 – Coylumbridge, Scotland**



# Presentation Overview

---

- Introduction to PARAMOUNT
- Motivation & Objectives
- System Overview
- PARAMOUNT Services
- Mobile Client 'TourGuide'
- Experiences & Test Results
- Conclusions & Outlook



# Introduction to PARAMOUNT

## ● What is PARAMOUNT?

- ▶ Mobile Navigation and Information System (prototype) for hikers
- ▶ Support Tool for Search & Rescue (SAR) services in the mountains
- ▶ Project funded by the European Commission (IST programme)



## ● Who has developed PARAMOUNT?

- ▶ International European consortium of 5 partners:

- ▶ IfEN GmbH, Poing/GER (*Coordinator*)
- ▶ AGIS, University of the Bundeswehr Munich, Neubiberg/GER
- ▶ ICC, Barcelona/Spain
- ▶ Bavarian Mountain Rescue Service (Bergwacht), GER
- ▶ Austrian Mountain Rescue Service (OEBRD), AUT



Generalitat de Catalunya  
**Institut Cartogràfic de Catalunya**



## ● Project Time Schedule?

- ▶ Duration: 20,5 months (Project end: October 2003)



# Motivation & Objectives

## ● General Objective:

Contribute to the improvement of user friendly info-mobility services, especially for mountaineers, by combining **Satellite Navigation** (GNSS) and **Telecommunication** (GSM/UMTS) with **Geoinformation**

## ● Main Objectives:

- ▶ Development of prototype Location Based Service (LBS) for mountaineers in test areas in the Alps and Pyrenees
  - Integration of **positioning/navigation, communication, coordination and information** service
  - Implementation of safety features (SAR functionality; safety relevant information) allowing for immediate and appropriate help from outside in critical situations
  - **Integration of appropriate information and coordination functionality for mountain rescue teams**
  - Development of a procedure for capturing/updating GIS data by involving the users
- ▶ **Demonstration and proof of feasibility of such a LBS in mountainous terrain**

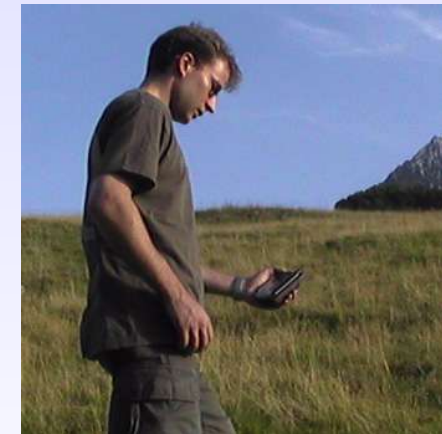


# PARAMOUNT System - Overview



# INFOTOUR

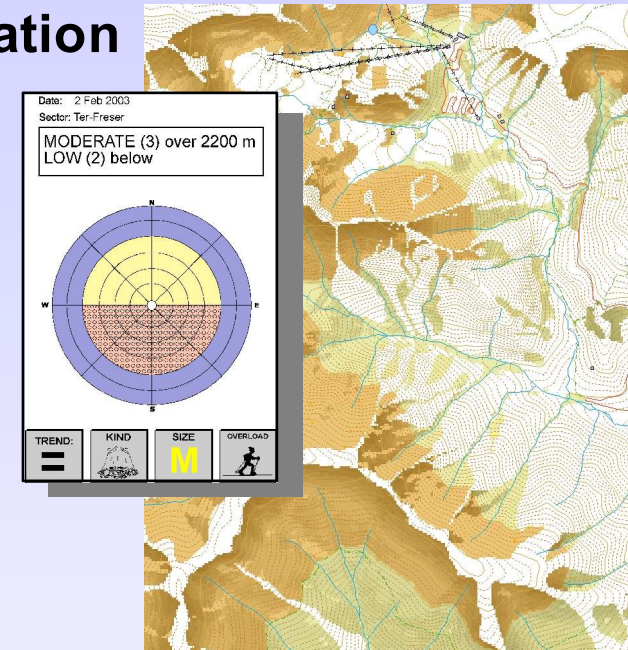
- Download and visualization of appropriate **maps** depending on the current user's location
- Displaying the **user's position and heading** on the map
- Providing **Points of Interest (POI)** like mountain summits, huts, transportation facilities etc. to the user
- Providing further information on those POI
- Offering online-**routing** and **guidance** assistance to the hiker
- Providing further information like links to weather forecast



# SAFETOUR

Offering safety-increasing functionality to the hiker

- Tracking of the user in dangerous situation
- Sending an **emergency call** (incl. position) to the mountain rescue authorities
- Information on regional **avalanche hazard** in maps and diagrams



Supporting the SAR (Search-and-Rescue) missions

- special featured TourGuide hardware/software for SAR teams
- 'SAR Centre' mission control panel
  - ▶ Visualization in 2D/3D of the **emergency position**
  - ▶ Visualization in 2D/3D the current **positions of the SAR teams**
  - ▶ Tool to manage plenty of mission status information

# SAFETOUR – SAR Center Client

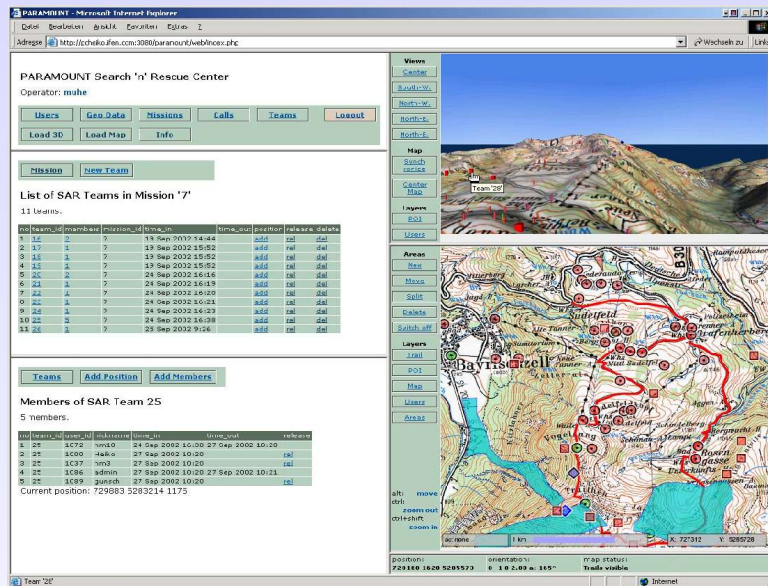
The screenshot displays the SAFETOUR SAR Center Client interface, which is divided into several functional areas:

- Top Left Panel:** Contains the application title "PARAMOUNT Bavarian Alps - Microsoft Internet Explorer" and a search bar with the text "PARAMOUNT Search 'n' Rescue Centre". Below this are buttons for "Users", "Missions", "Calls", "Teams", and "Logout". Further down are buttons for "Lead 3D", "Info", and "Reports".
- Mission Information:** A section titled "PARAMOUNT Mission '22'" with the operator "Heiko". It includes fields for "call\_id: 47, notes", "Teams: D", "Start of Mission: 2003-07-16 13:18:50", and "End of Mission:".
- Navigation and Map Controls:** A central vertical menu offers options for "Views" (Center, South-W, North-W, North-E, South-E), "Map" (Synchr, Center, Map), "Layers" (POI, Users), "Areas" (New, Move, Split, Delete, Switch off), and "Trail" (Trail, POI, Map, Users, Areas). Below this menu are keyboard shortcuts: "alt: move", "ctrl: zoom in", and "ctrl+shift: zoom out".
- 3D Terrain View (Top Right):** A 3D perspective view of a mountainous landscape. A red cross icon is placed on a peak, and a purple diamond icon is on a slope. A red cube is visible in the foreground.
- 2D Topographic Map View (Bottom Right):** A detailed topographic map of the same area. It shows contour lines, roads, and various landmarks. A red cross and a purple diamond are overlaid on the map, corresponding to their positions in the 3D view. The map includes labels for "Sudelfeld", "Wald A (1045)", "Bergkopp", and "Mittl. Sudelfeld".
- Status Bar (Bottom):** Displays technical information such as "Position: 728665 1311 5284128", "Orientation: -0.5 0.9 0.1 0.43 az: 336°", and "Map Status: 14 X: 728400 Y: 5285255".





# SAFETOUR System Overview



'SAR Centre Client' (Internet based)



# DATATOUR

---

- **Directly involving the users in the geo-data capturing and maintaining process**
- **Update/completion of the service database using logged data and information input from dedicated hikers for:**
  - ▶ Trails (logging)
  - ▶ Capturing/updating information on Points of Interest
- **Semi-automatically processing and verification of the collected data**



# Mobile Client 'TourGuide'

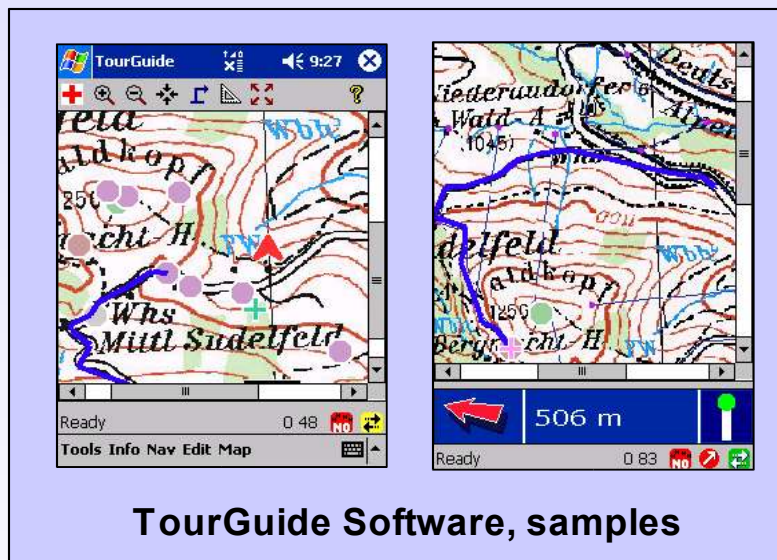
## Client Hardware:

- ▶ Pocket PC
- ▶ GPS receiver module (e.g. Compact Flash Card or Bluetooth receiver)
- ▶ GSM/GPRS communication component (e.g. PC card or internal module)

## Client Software:

Developed in C++ (MS eVC3.0)

Multi-language GUI

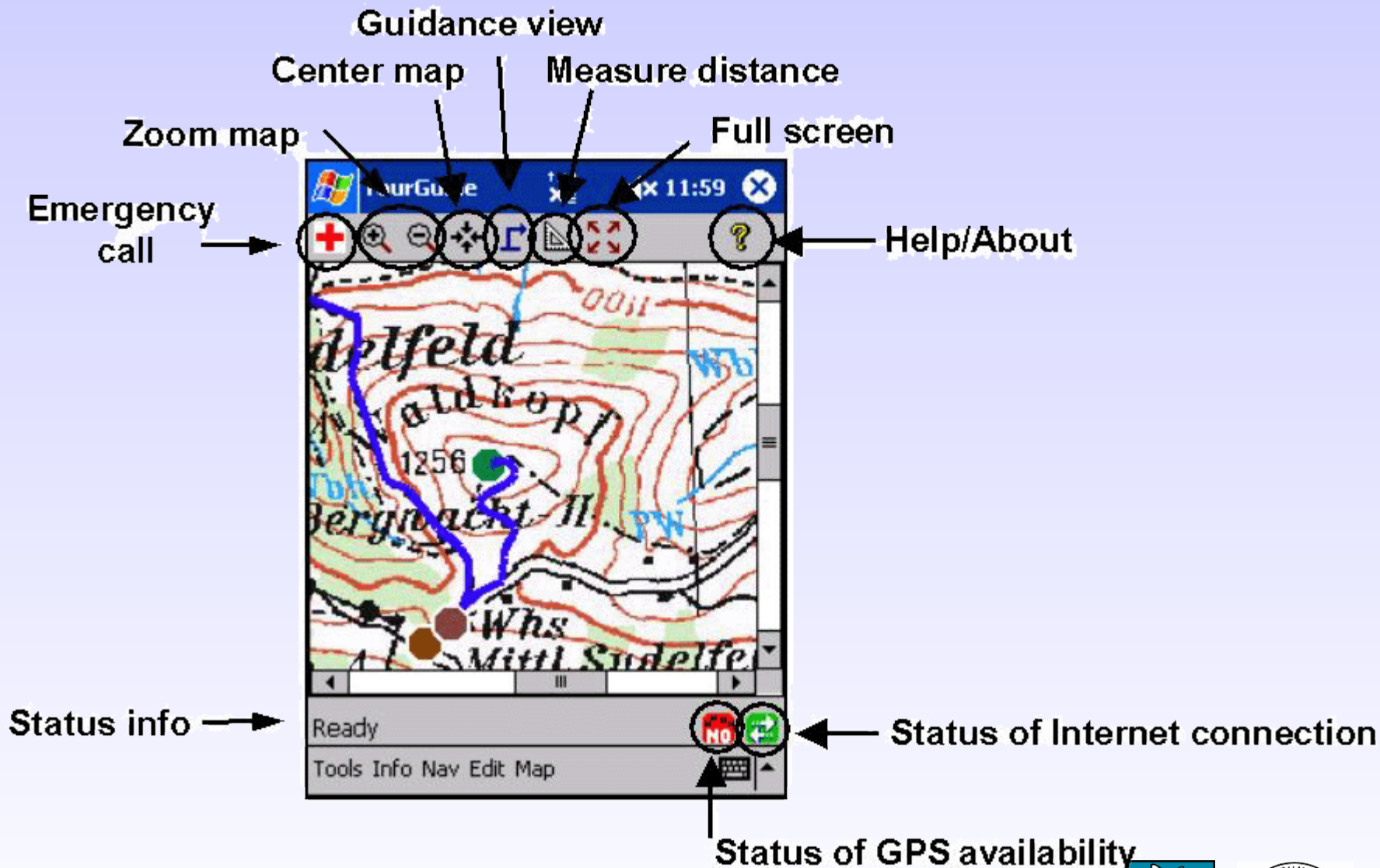


Standard HW



Ruggedised outdoor HW  
(e.g. for SAR teams)

# Mobile Client – Tourguide GUI



# Experiences & Test Results

## Extensive field-tests

- ▶ Test phase: 03 - 07 / 2003
- ▶ Tests with interested hikers and SAR representatives

- **High acceptance of mobile TourGuide HW/SW by users**
- **Mobile client battery capacity sufficient for day trips**
- **SAFETOUR features well suited to make SAR missions faster and more effective**
- **Further efforts necessary to improve service robustness & reliability**



# Conclusions & Outlook

- Tested and evaluated **running prototype system** for two particular demonstration areas in the German Alps & Spanish Pyrenees
- Very **positive feedback** concerning the implemented functionality from many demonstration attendants, testers
- Currently **preparation of a regular PARAMOUNT service** in a dedicated pilot area in the German Alps
- SAFETOUR features enabling application of new support and control functionalities to **other public areas**, e.g. fire brigade teams, police special forces

*"...also high fun factor for technical open-minded hikers..."*

*"...surely high market potential..."*

➔ For further info please visit: [www.paramount-tours.com](http://www.paramount-tours.com)

