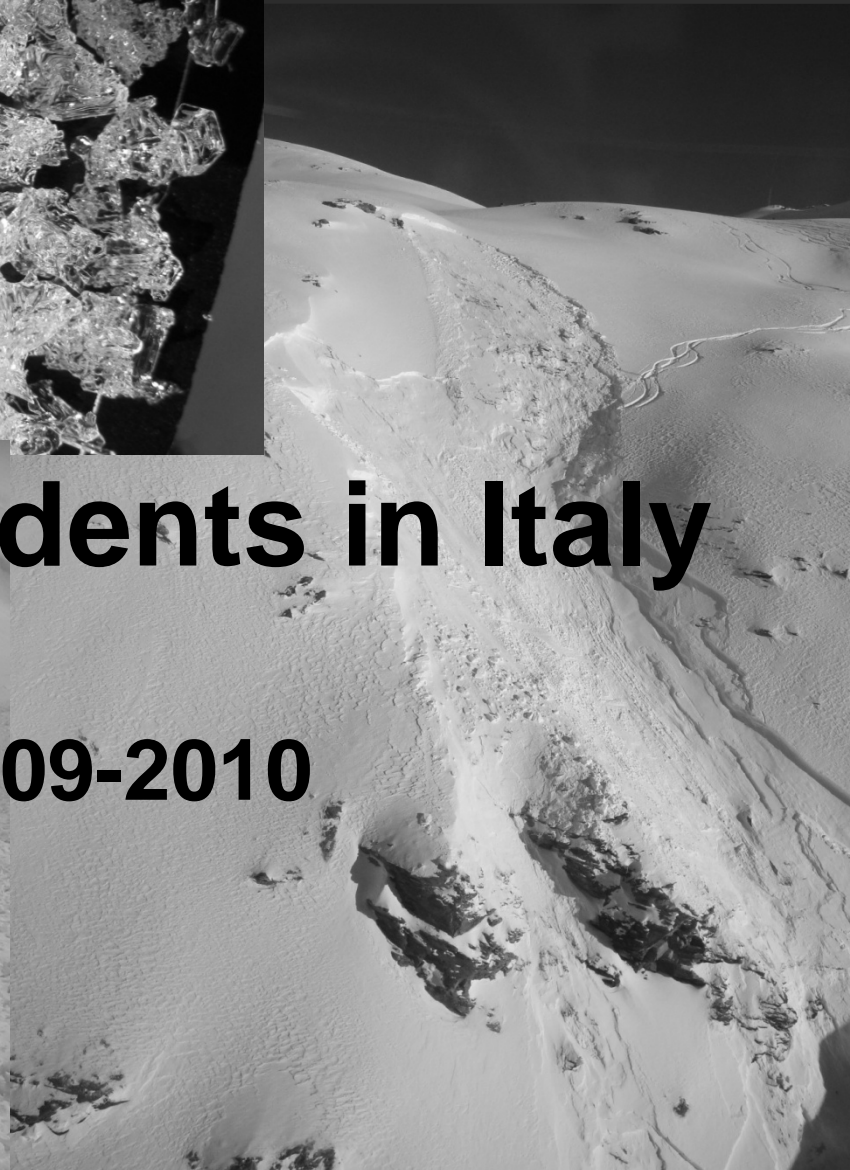


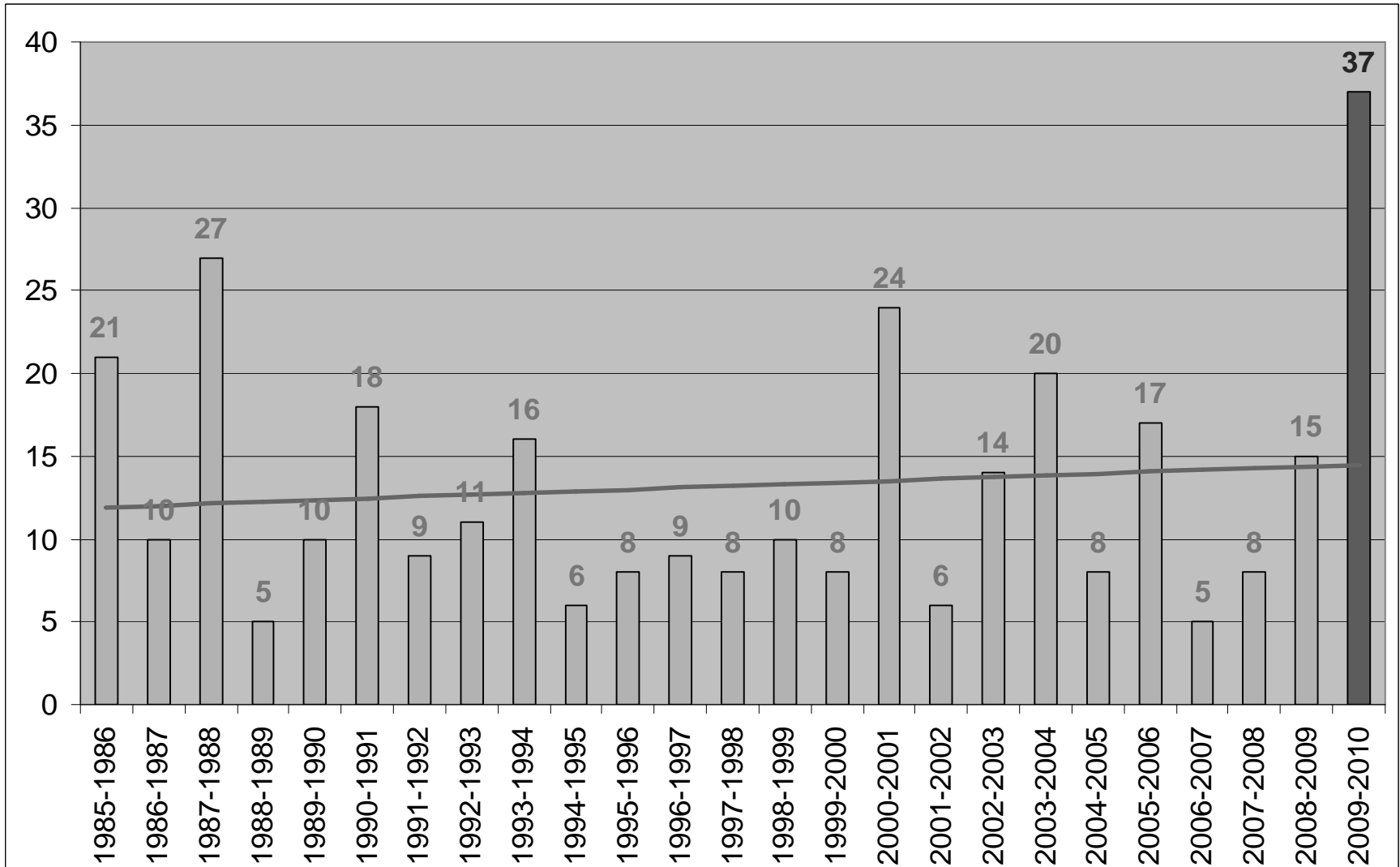
# Avalanche accidents in Italy

Season 2009-2010

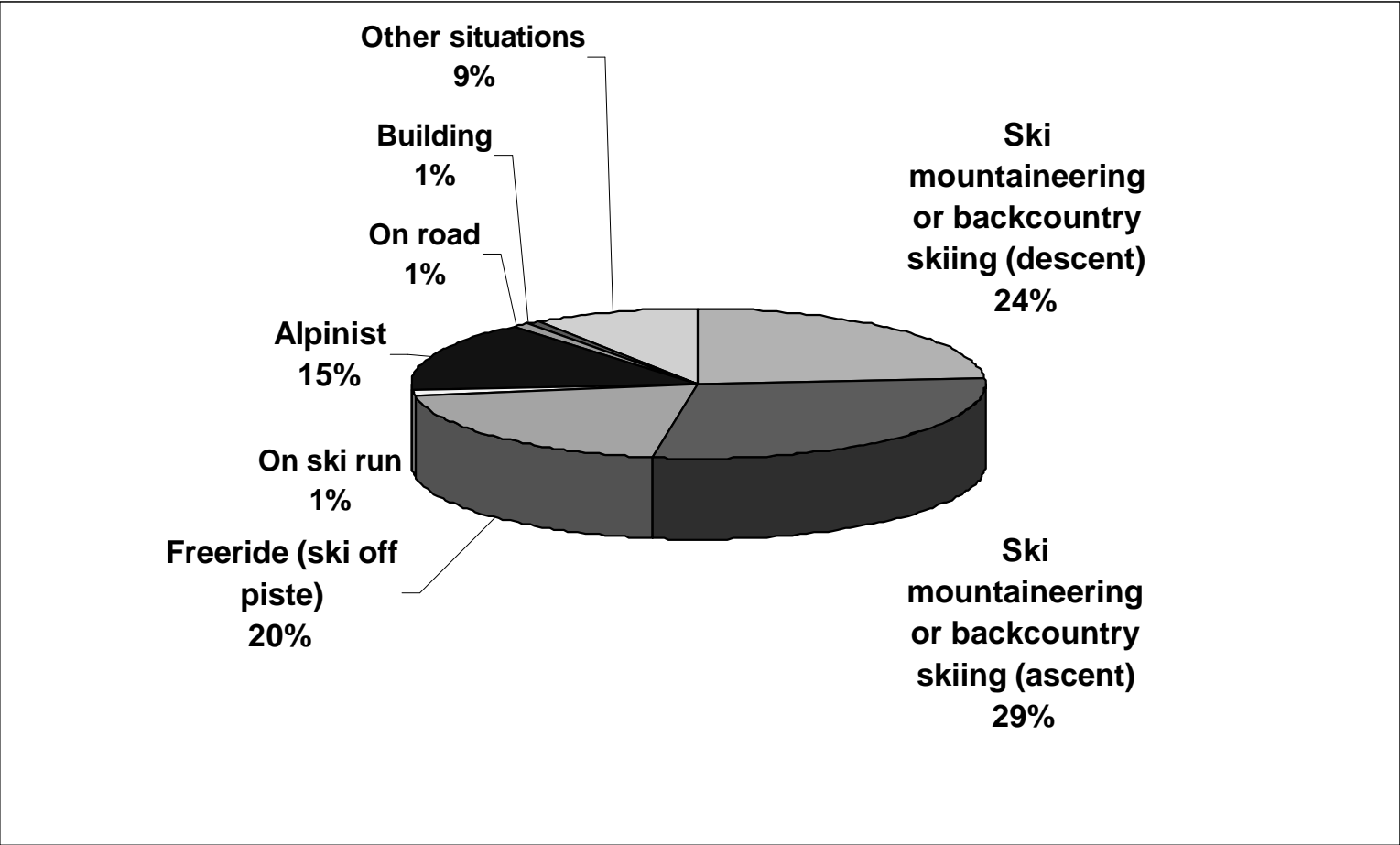


# Avalanche fatalities in Italy 1986-2010

In Italy on average there are 13 avalanche fatalities each season



# Fatalities rate by category in Italy 1986-2010

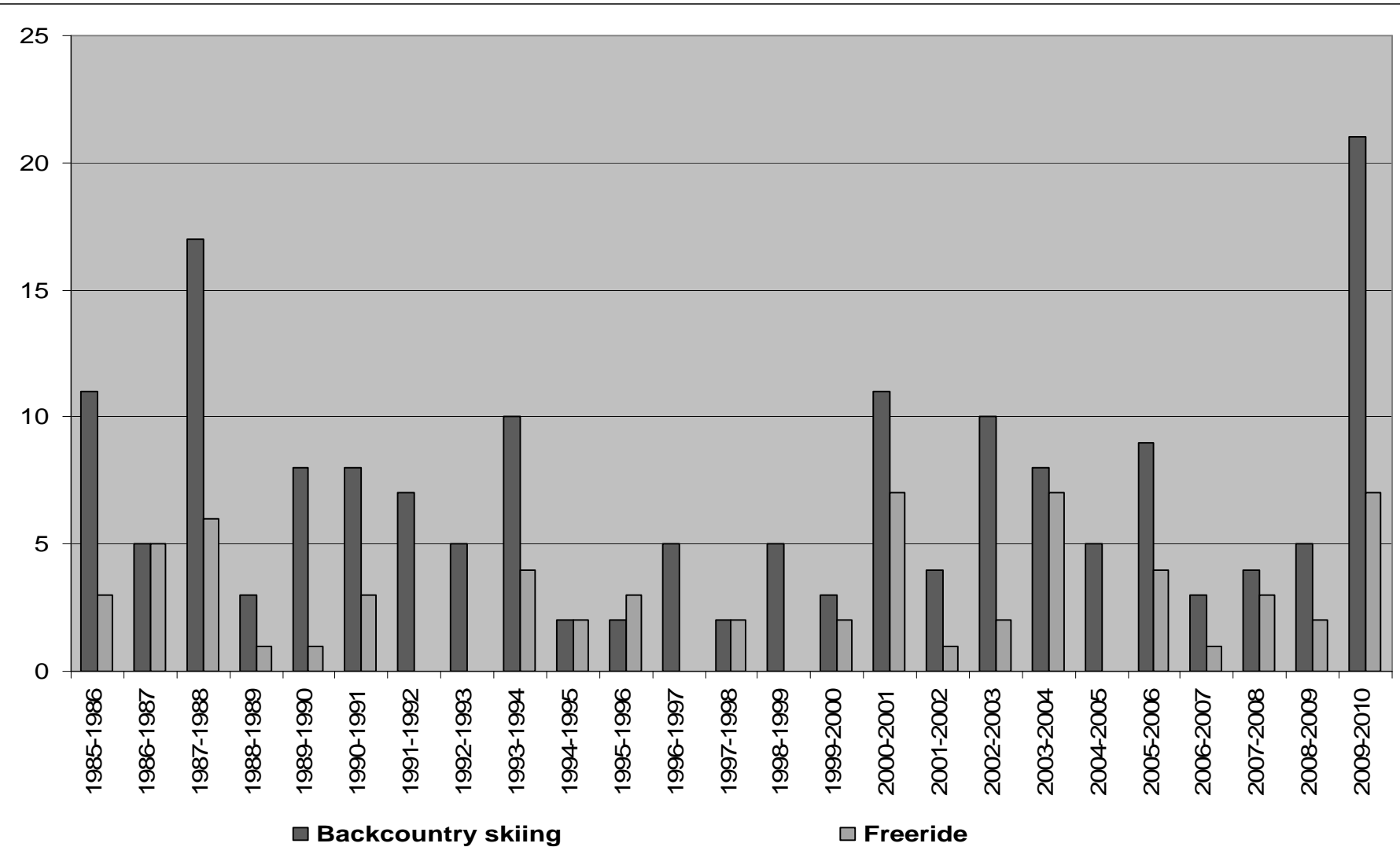


53% backcountry skiing

20% freeride

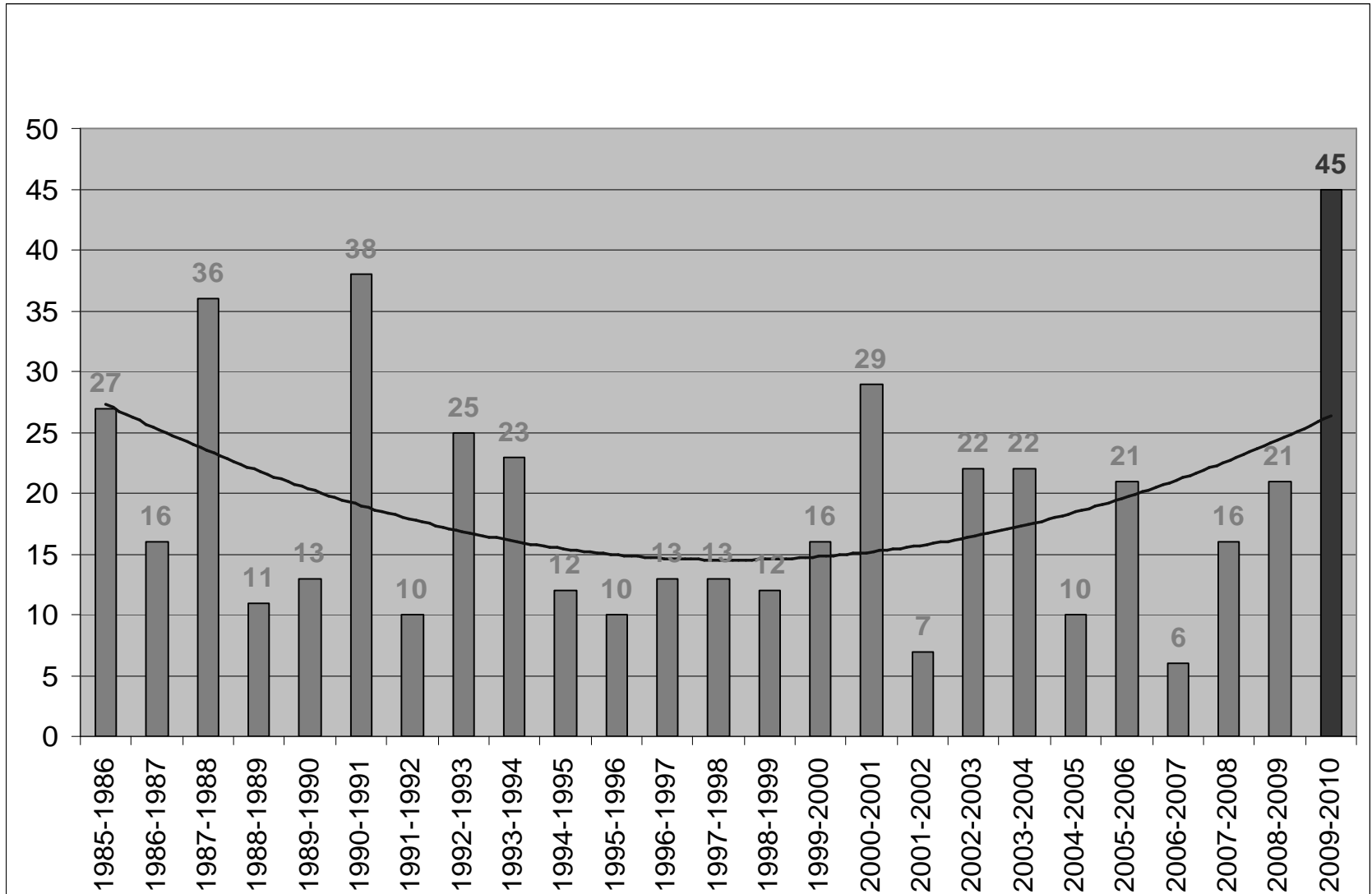
15% alpinism

# Freeride and backcountry skiing fatalities in Italy 1986-2010



# Avalanche victims in Italy 1986-2010

In Italy on average (linear media) 19 persons die every year in avalanche fatalities



# Victims in Italy by Regions – season 2009/2010



Avalanche fatalities :

Monday, 1st March 2010 Toulou Glacier



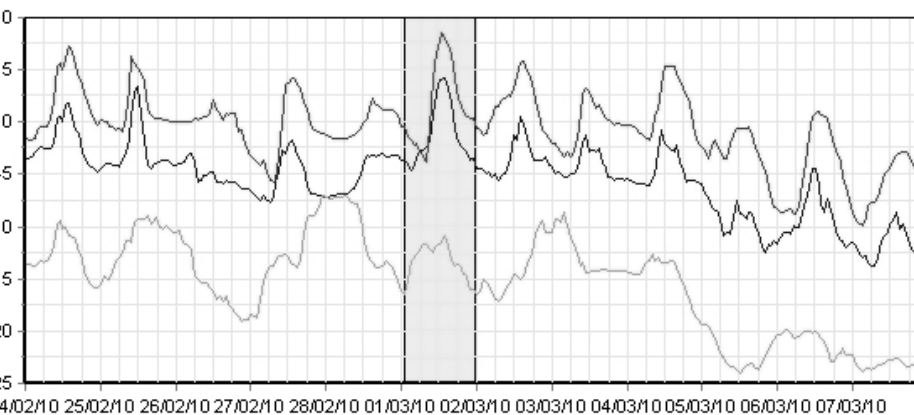
Arrivo





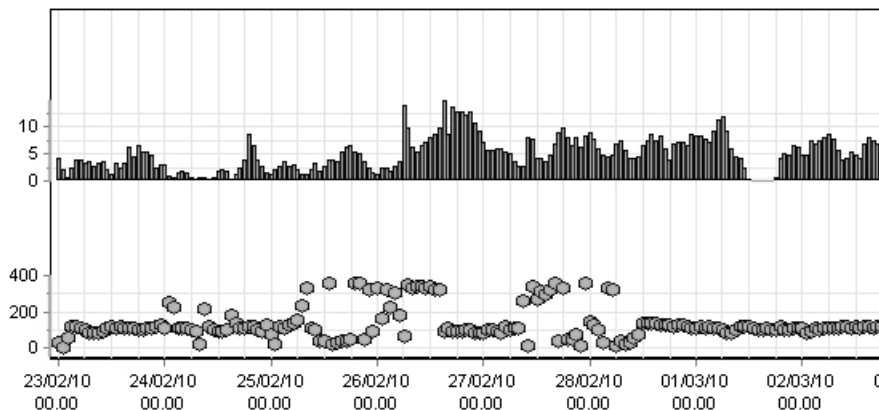
# Temperature

- Courmayeur Mont de la Saxe - 2076 Tamb [°C]
- Courmayeur P.Helbronner - 3460 Tamb [°C]
- Courmayeur Dolonne - 1200 Tamb [°C]



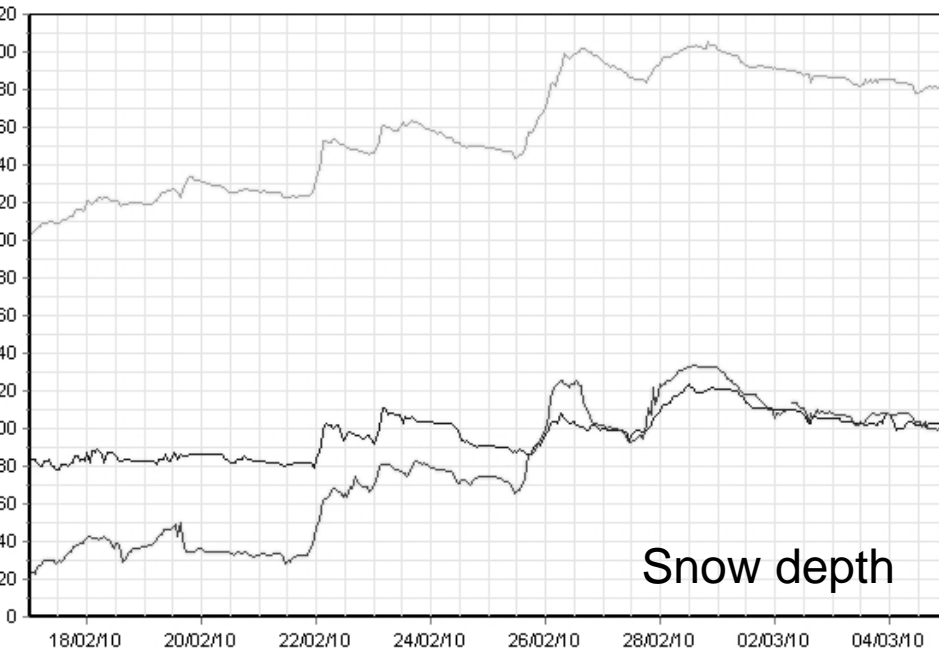
Data da 17/02/2010 a 04/03/2010 23.59.59 [Orari]

- Courmayeur Mont de la Saxe - 2076 Vvel [m/s]
- Courmayeur P.Helbronner - 3460 Vvel [m/s]
- Courmayeur Mont de la Saxe - 2076 Vdir [°N]

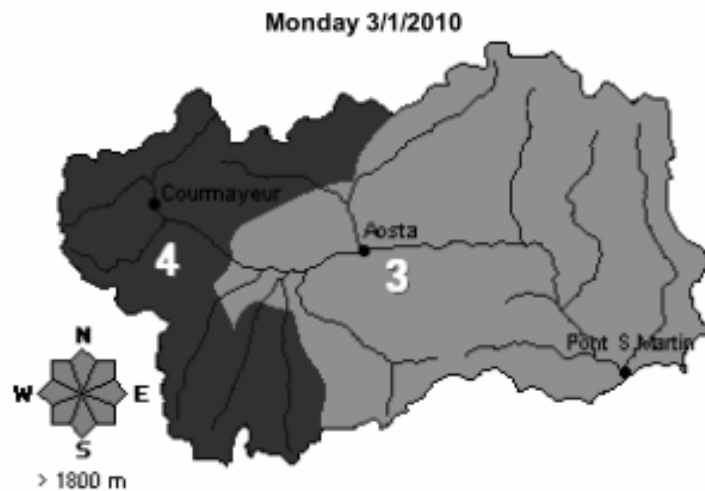


# Wind (speed, direction)

- Courmayeur Dolonne - 1200 Nliv [cm]
- Courmayeur Mont de la Saxe - 2076 Nliv [cm]
- Courmayeur Pré de Bard - 2040 Nliv [cm]



# Snow depth



conditions on 1 March 2010

Monday, 1st March 2010

first natural avalanche: **11.01 a.m.**



Monday, 1st March 2010

first natural avalanche: **zoom**



Monday, 1st March 2010

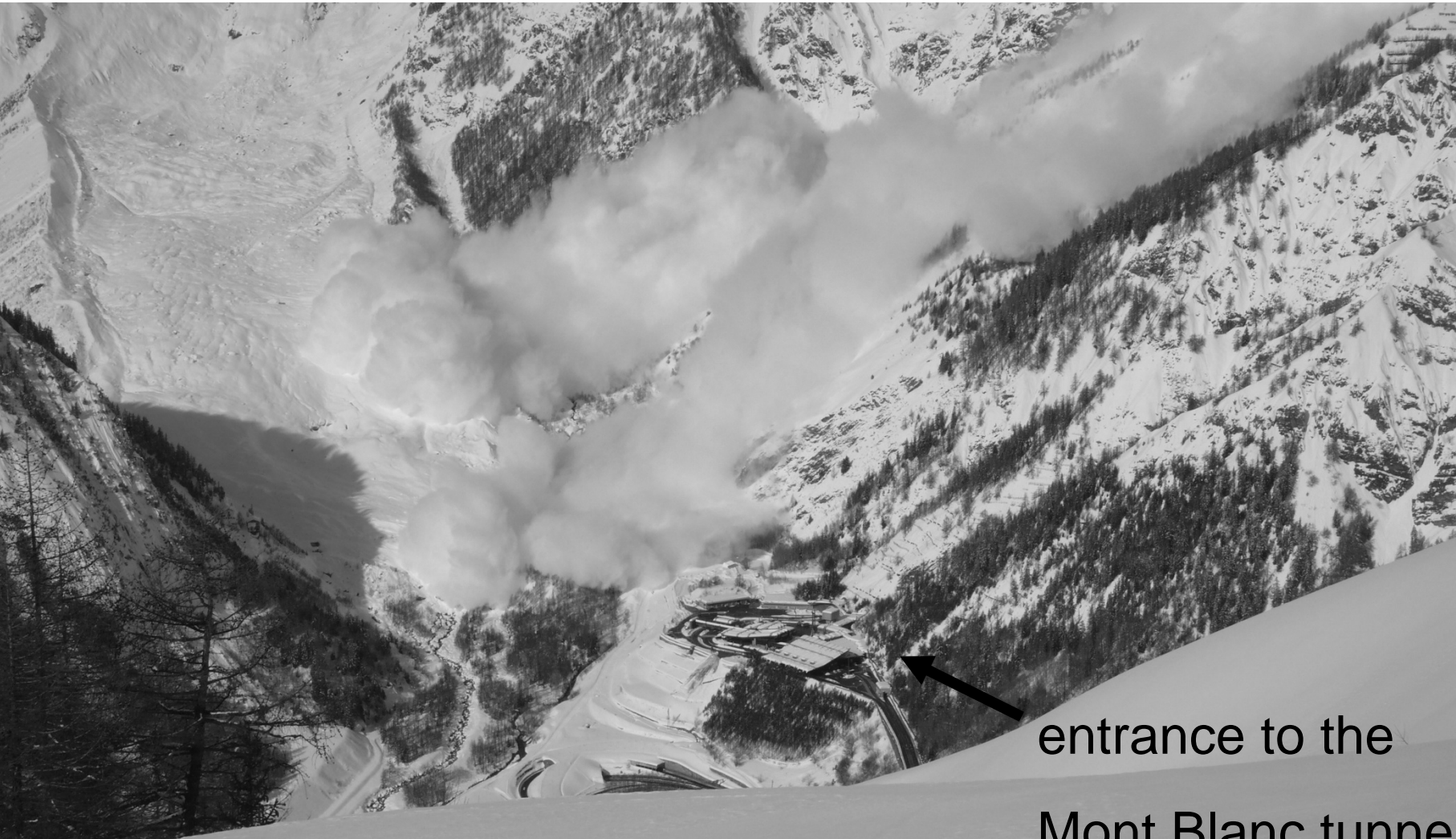
second natural avalanche: **11.05 a.m.**





Fall time of the avalanche: about 60 seconds

About 1300 m of height difference



entrance to the

Mont Blanc tunnel

Monday, 1st March 2010

third natural avalanche: **12.30 a.m.**

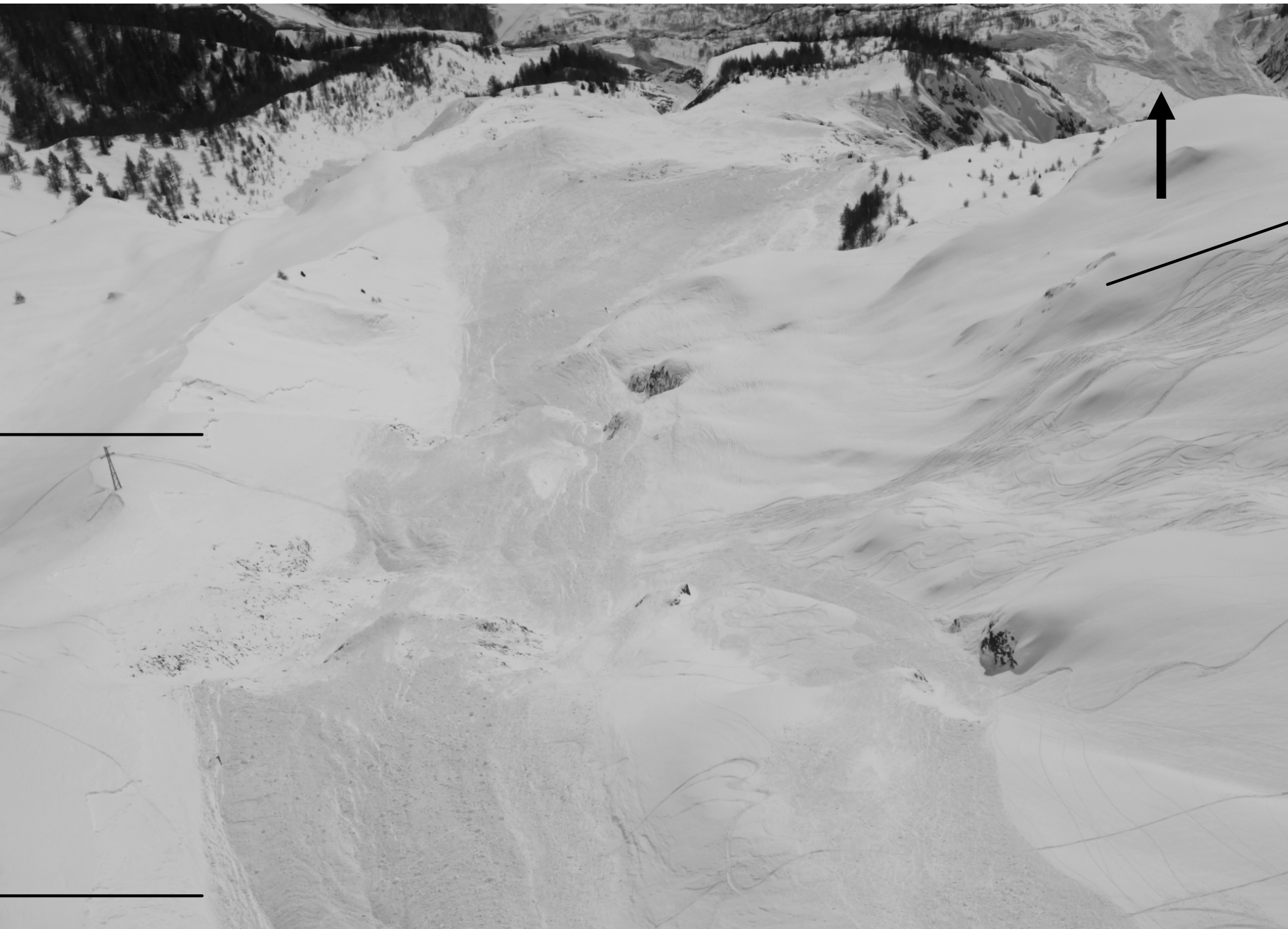


17/02/1991 → 12 victims











rescue teams and dog handlers searching



victim →



**for further informations: [aineva@aineva.it](mailto:aineva@aineva.it)**