

Canine Avalanche Search / Scent Theory



Objective

Explain the theory of scent as it relates to canine search



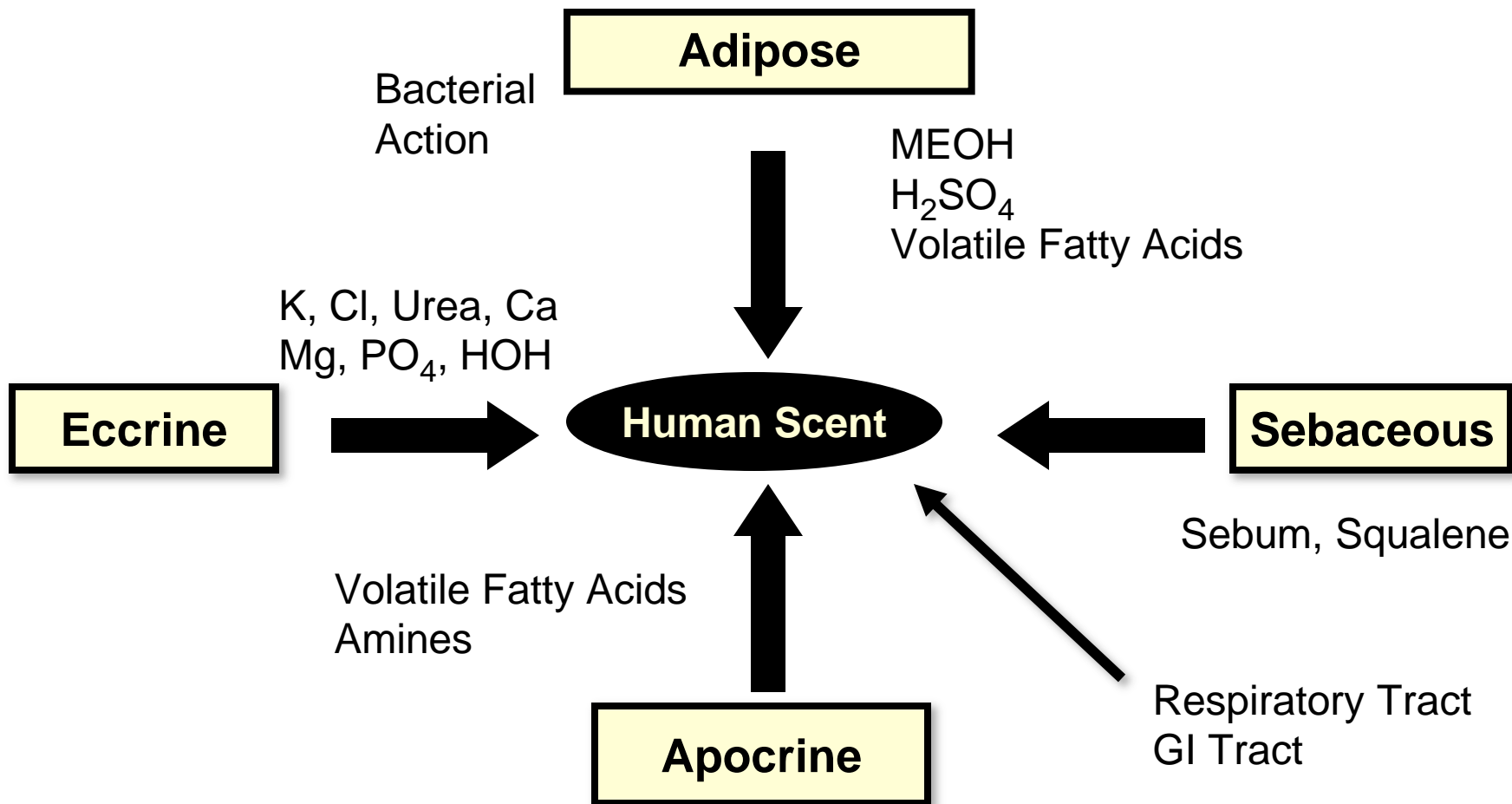
Enabling Objective's

- 1. Explain the rationale for understanding scent movement**
- 2. Describe the factors that may affect scent**
- 3. Describe how scent is transported away from the victim**
- 4. Plan the search of a avalanche scene to efficiently work canines into scent**

The Canine Olfactory System

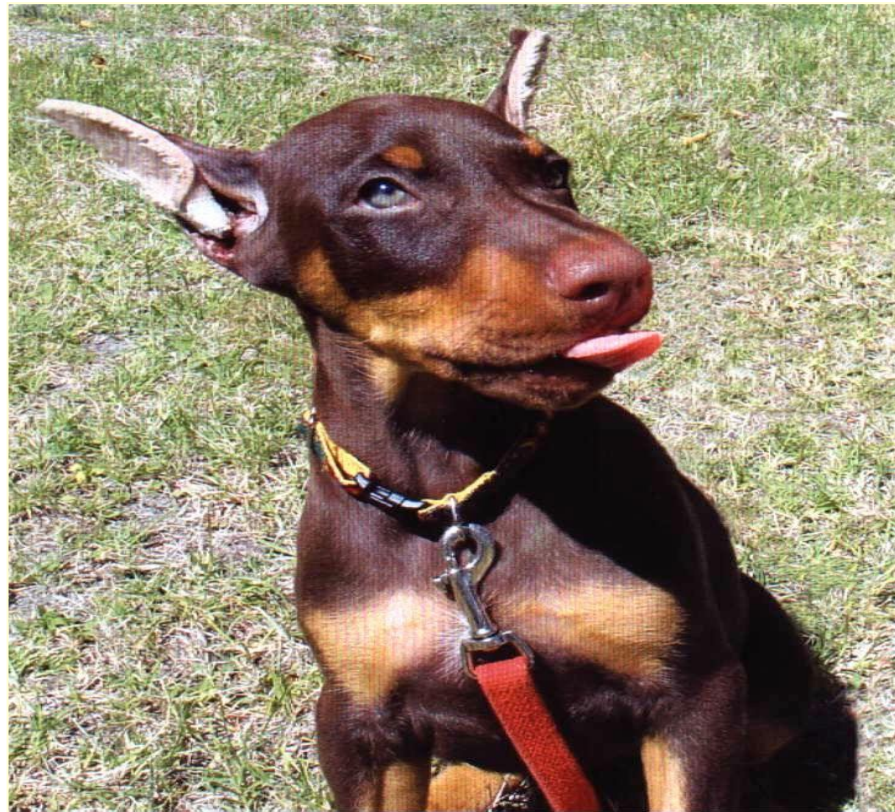
“The Nose Knows”





Other factors: Genetic, Diet, Environment

Huh?



Rationale

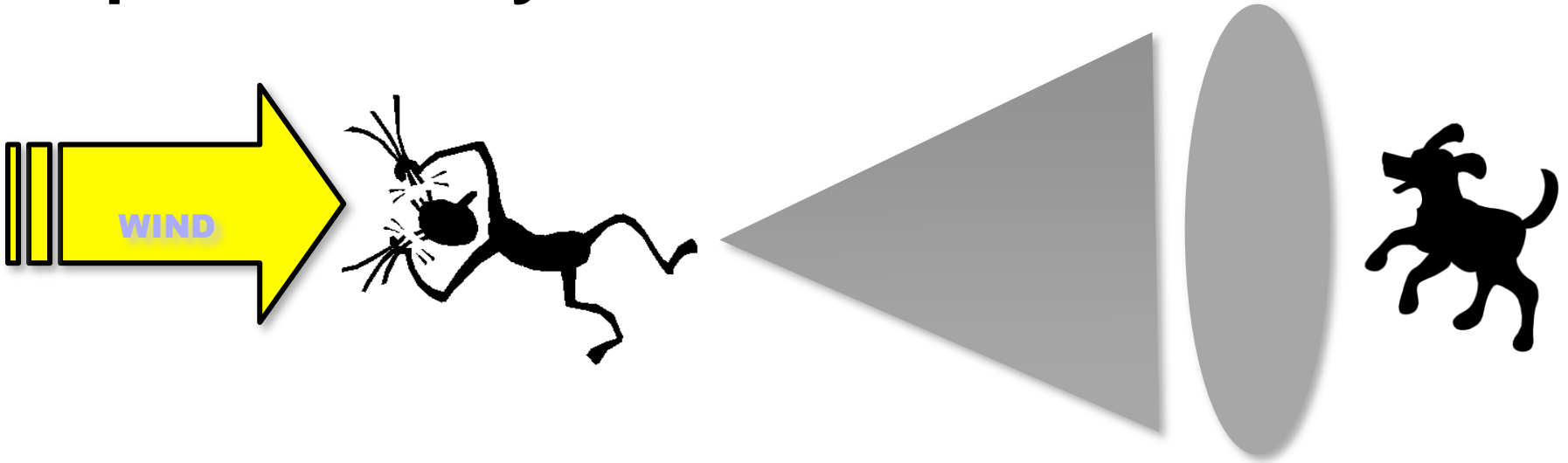
- ⑩ Scenting Dogs “see” the world through their nose**
- ⑩ Scent is 3-dimensional to them**
- ⑩ Our job is to put them where they can best detect scent**

Influences on Scent Dispersal



How is scent dispersed?

The scent is heaviest at the source and dispersed away from the victim in a cone



Environmental Influences



Environmental Influences

- ⑩ Wind strength and direction
- ⑩ Temperature
- ⑩ Humidity
- ⑩ Day Vs. Night



Wind

⑩ Strength

⑩ Direction



Temperature

⑩ Warm

⑩ Cold

⑩ The temperature of victim versus the temp



Humidity

⑩ High

⑩ Low

⑩ Rain

⑩ Snow



Day vs: Night Search

- ⑩ Sunny & warm
- ⑩ Dark & cold
- ⑩ Overcast sky
- ⑩ Clear



Scent Flow and Detection



Influences on your scene



Influences on your scene

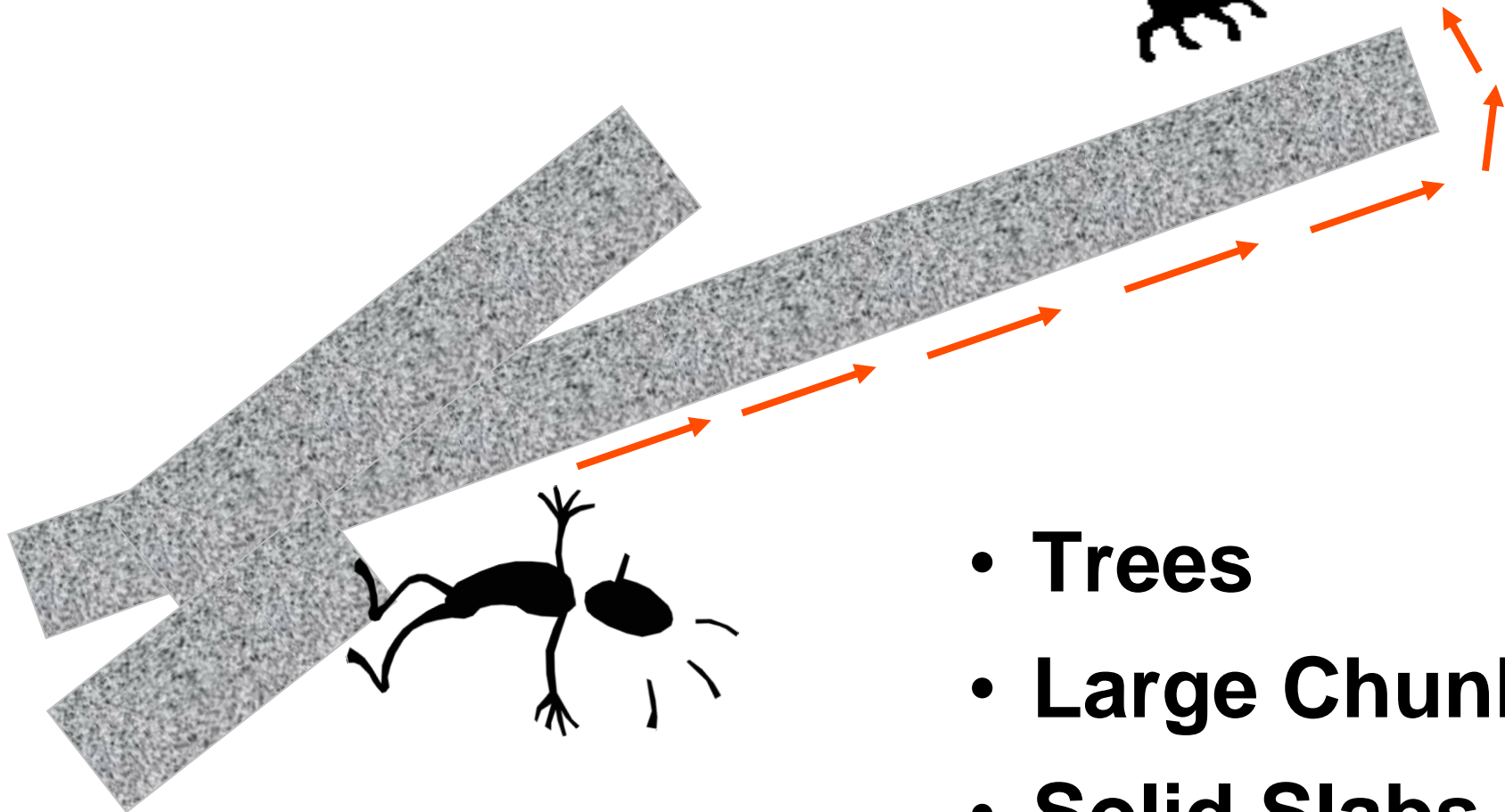


DETECTION vs: LOCATION

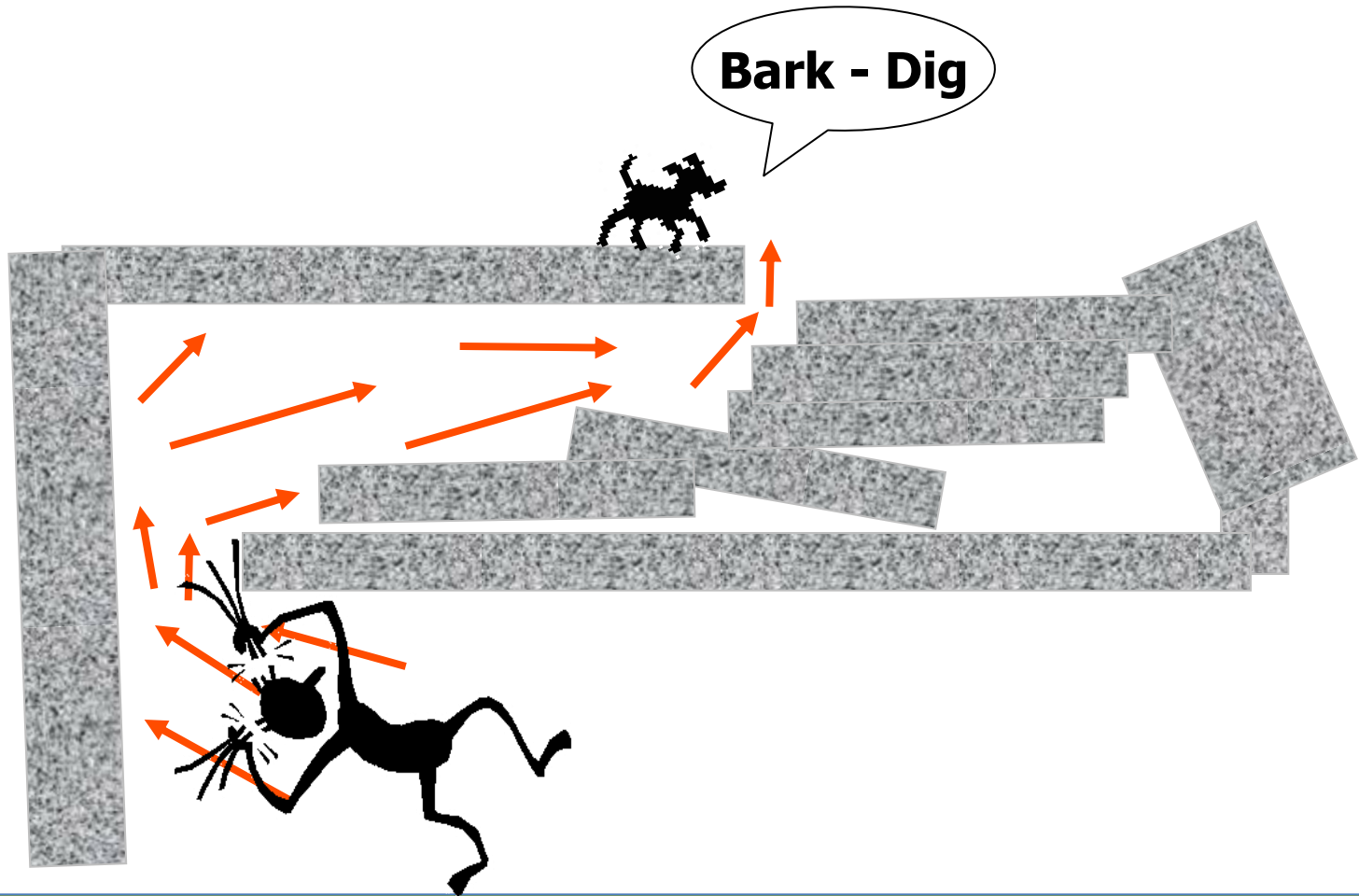
⑩ Dogs are SCENT detectors, NOT victim locators.

Scent Flow—Channeling

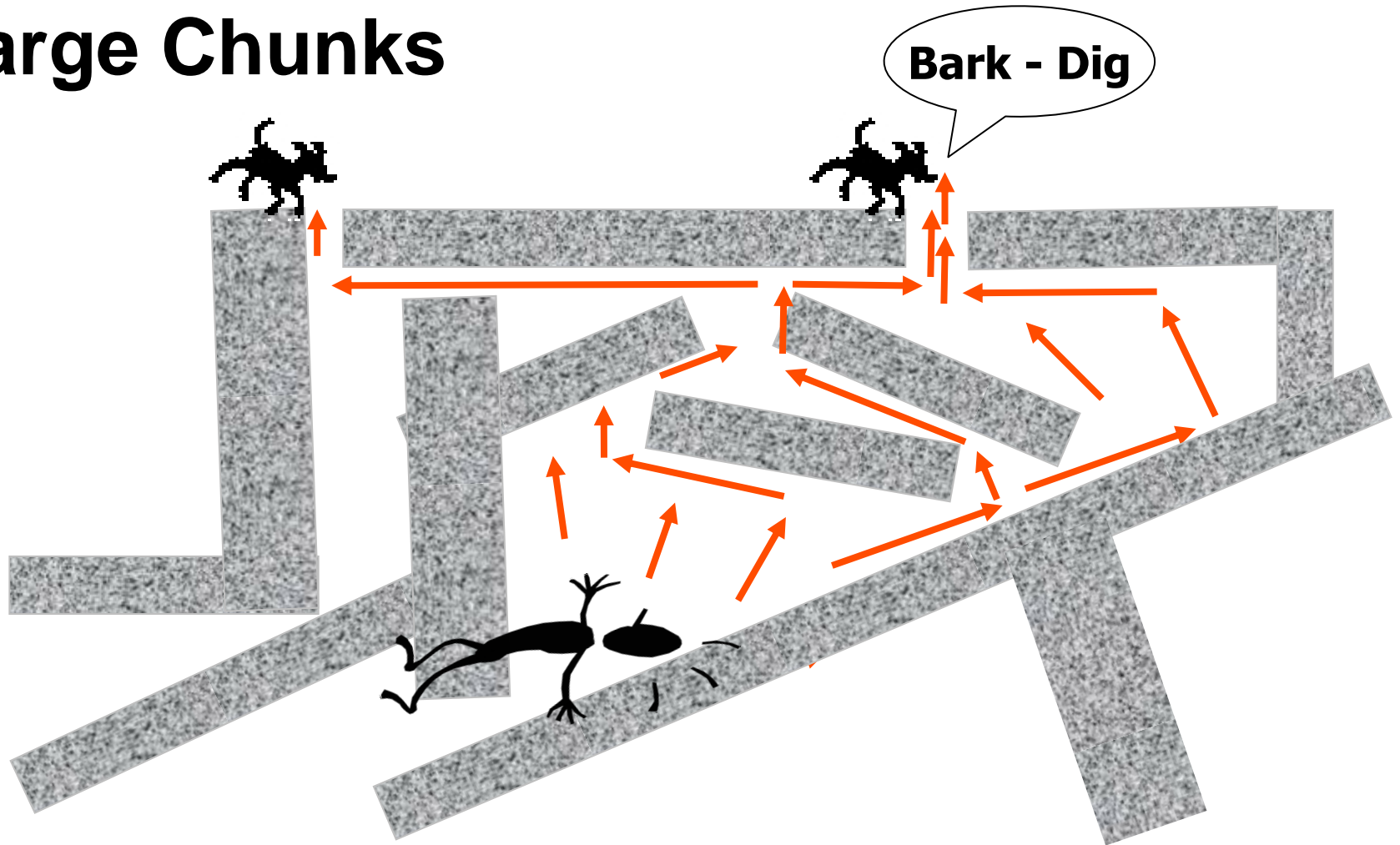
Bark - Dig



- **Trees**
- **Large Chunks**
- **Solid Slabs**

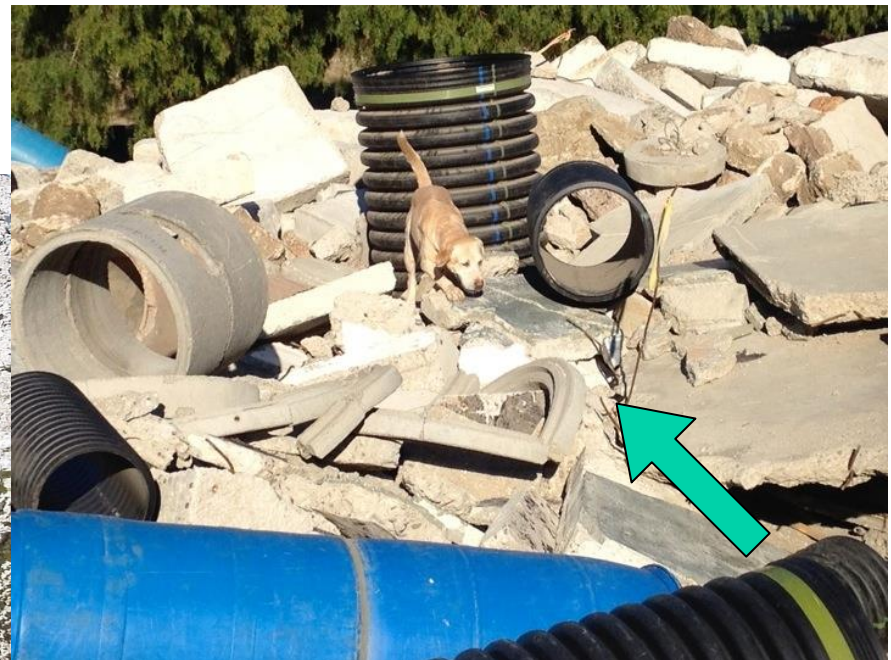


- **Solid Slabs**
- **Large Chunks**



Scent Source Detection

⑩ Be able to interpret your dog's alert



Use your scent knowledge

- 1. Understand rationale of scent**
- 2. Identify factors that may affect scent**
- 3. Understand how scent can be affected and transported**
- 4. Send canine from position which maximizes probability of detection**

Ending the deployment (training)

⑩ Debriefing

⑩ Handler to Handler

⑩ Handler to Search Team Manger

⑩ Documentation & records



Ending the deployment

- ⑩ Examination and care of K-9
- ⑩ P.T.S.D. individual and group



Questions?





Tracy D. Christensen
President

PO Box 980266
Park City, Utah 84060
United States of America

801-361-5614

mickskidog@comcast.net