



Avalanche accidents winter 2015/16 Swiss Alps

Gian Darms, Beni Zweifel / SLF Davos

ICAR Bulgaria 2016

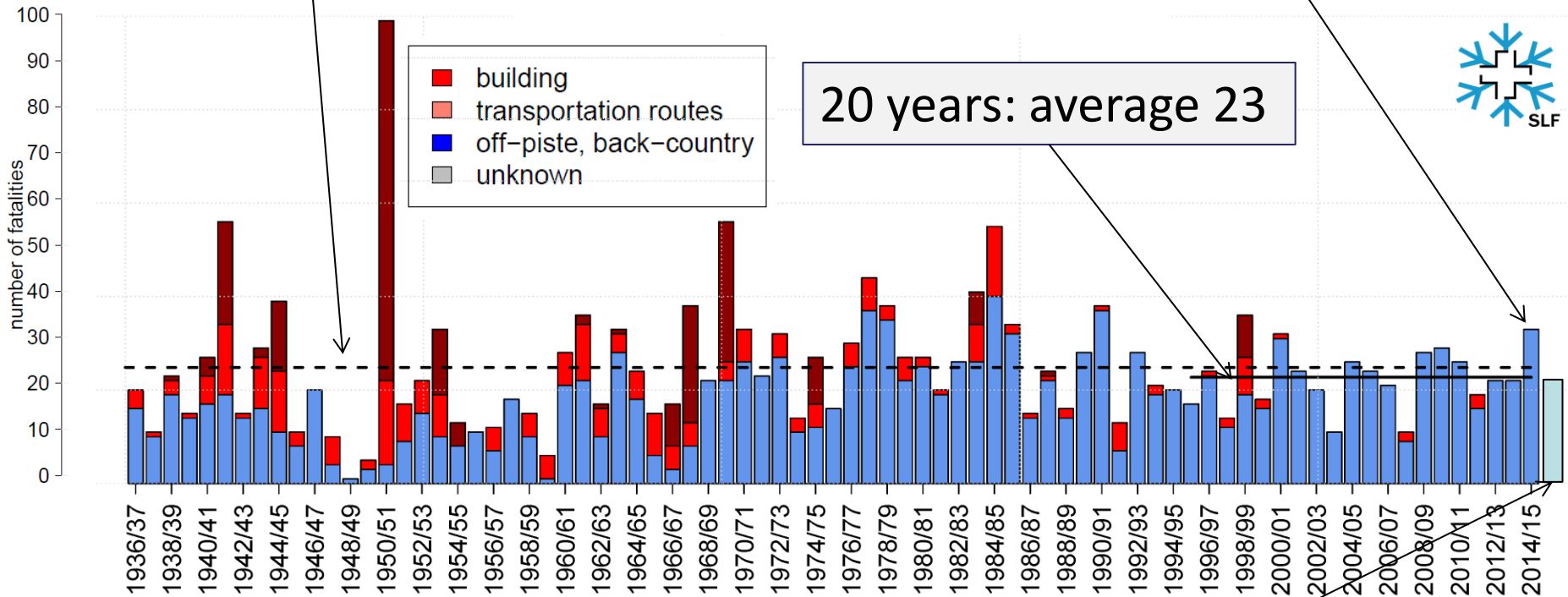


Avalanche fatalities since 1936/37

79 years: average 25

Winter 2014/15: 33

20 years: average 23



Winter 2015/16: 21



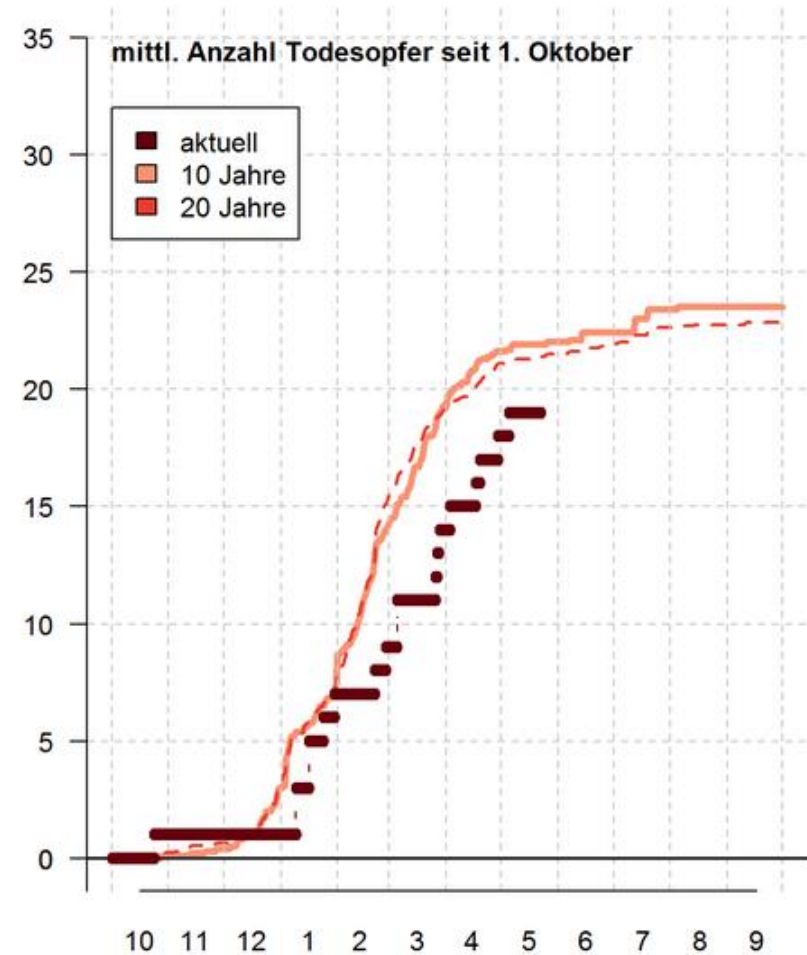
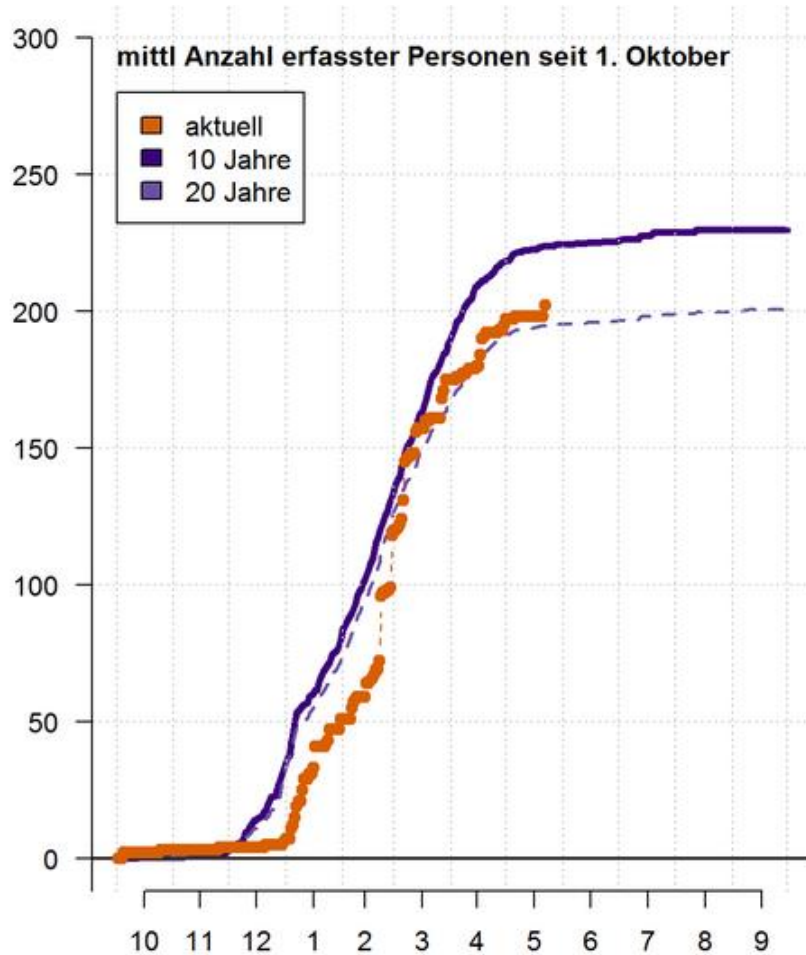
Winter 2015/16 less dangerous?

Possible reasons:

- safe conditions during Christmas (almost no snow)
- Jan/Feb: often bad weather during weekends
- no accidents with more than 2 fatalities
- Danger in Jan/Feb very obviously (whumpfing, shooting crack, natural releases)



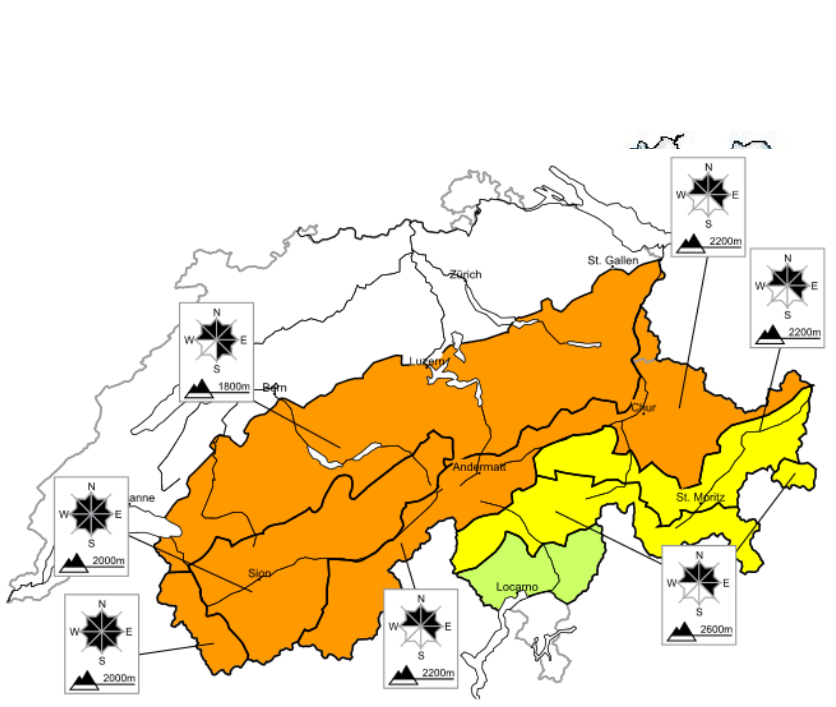
Less fatalities, many involved people – luck...?



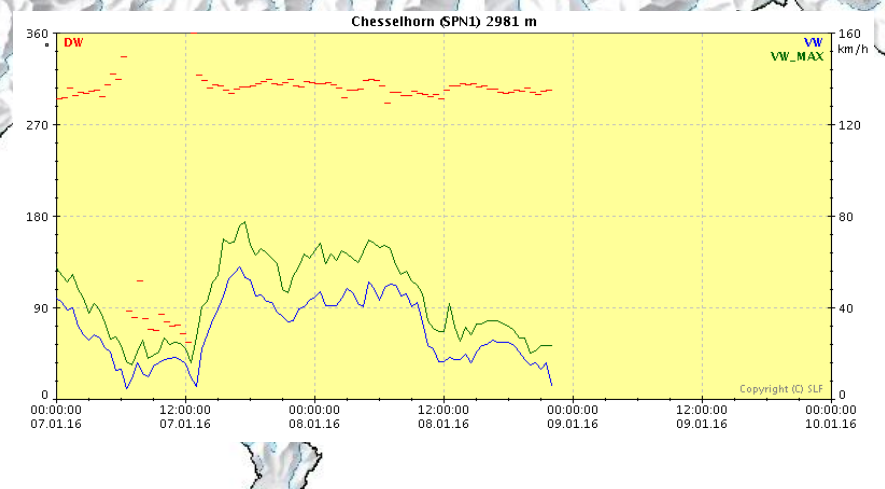
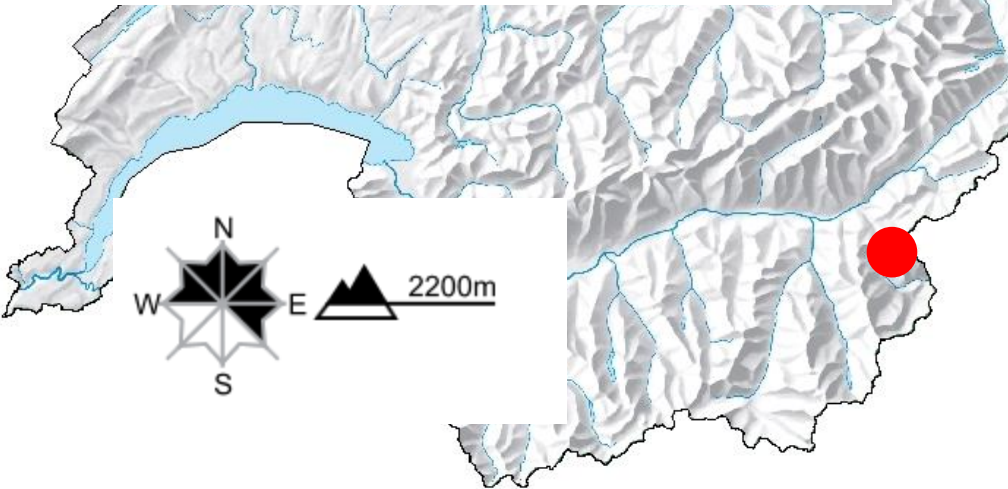
Example



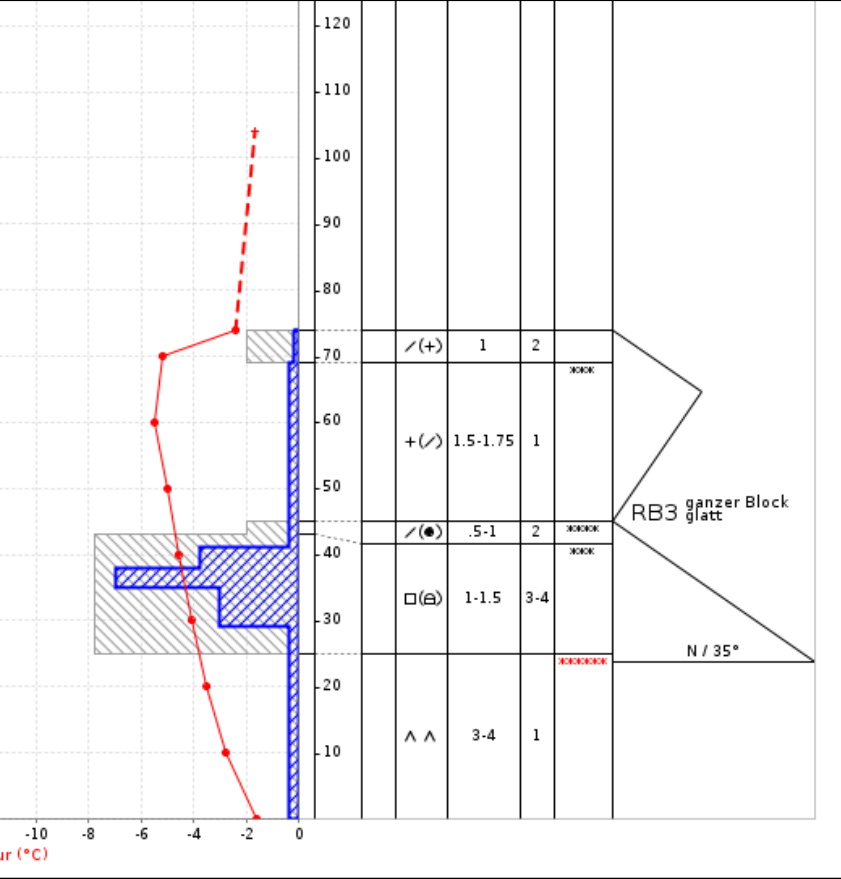
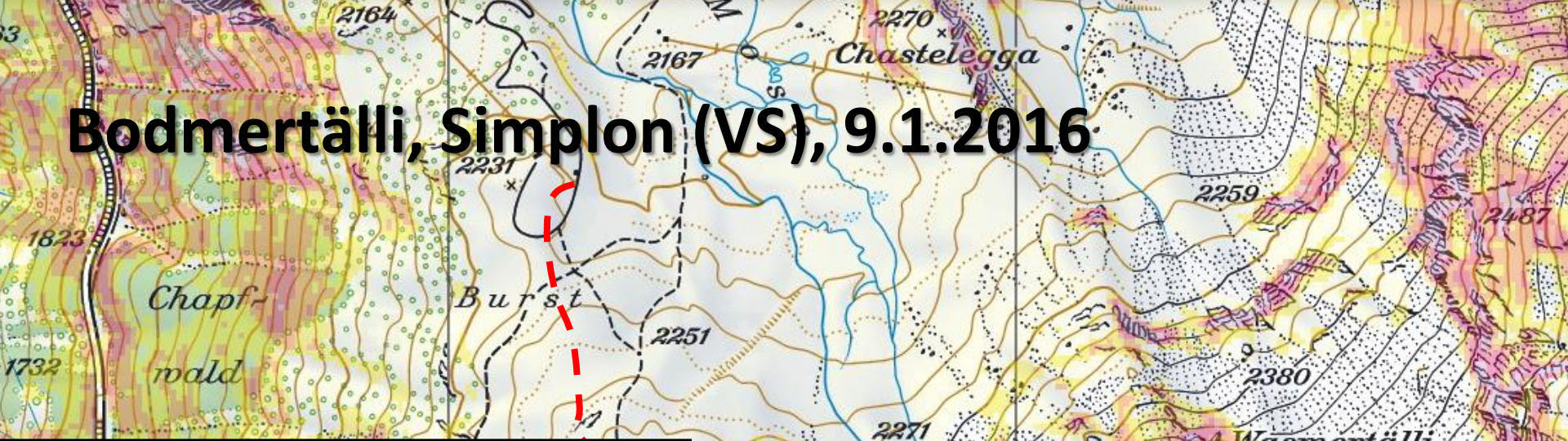
Bodmertälli, Simplon (VS), 9.1.2016



Datum	4SH, 2000m	4SM, 1470m
7.1.	2	0
8.1.	14	21
9.1.	4	5



Bodmertälli, Simplon (VS), 9.1.2016

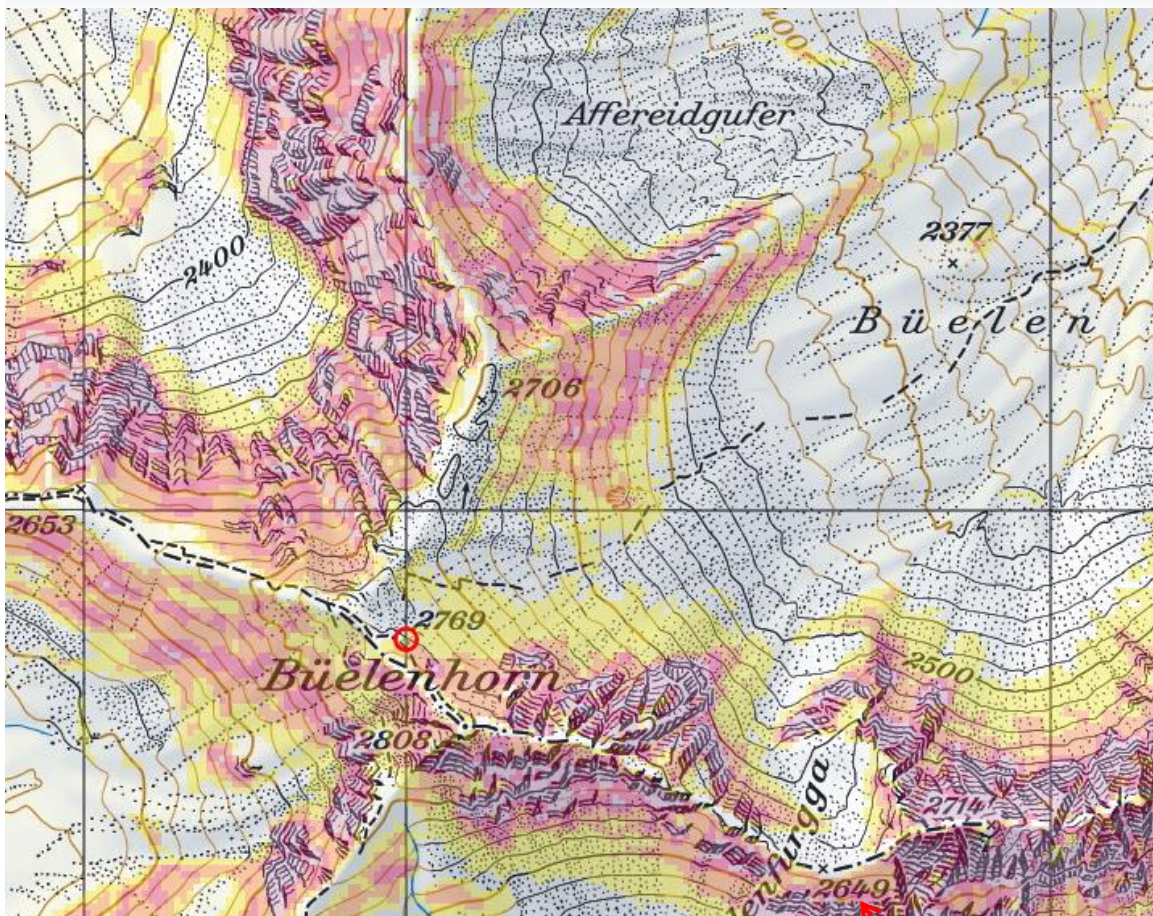


Bodmertälli, Simplon (VS), 9.1.2016

**3 persons, all completely buried,
Rescue by following group
1 person 30 cm, 20 min, survived
1 Person 140 cm, 40 min, dead
1 Person 170 cm, 45 min, dead**



News on www.slf.ch



Location (n)	Aspect	Activity	Victims (caught, buried)	Danger-level
	ESE	1	1 (1, 1)	(2)
	SW	1	1 (2, 1)	(2)
	N	1	1 (1, 1)	3
	NNE	2	1 (1, 0)	3
	NNW	1	1 (6, 3)	2-3
	ENE	2	1 (1, 1)	1-3
	N	1	1 (2, 1)	(2)
	NNE	1	1 (1, 1)	2
	NNW	1	1 (1, 0)	1

10	2015/16	05.03.2016	GR	Safiental	Höllgraben	2660	SW	1	2 (2, 2)	3
11	2015/16	27.02.2016	SZ	Muotathal	Blüenberg	1600	N	1	1 (1, 1)	(3)
12	2015/16	21.02.2016	VS	Saas-Almagell	Aelin , Hohbaletscher	2900	ESE	2	1 (6, 1)	2
13	2015/16	30.01.2016	GR	Davos	Büelenhorn	2770	NE	1	1 (3, 1)	3
14	2015/16	24.01.2016	BE	Äschi bei	Archelesnitz	2400	NW	1	1 (3, 1)	2



News on www.slf.ch

Full avalanche bulletin (to print)
Avalanche bulletin through Wednesday, 20 April 2016

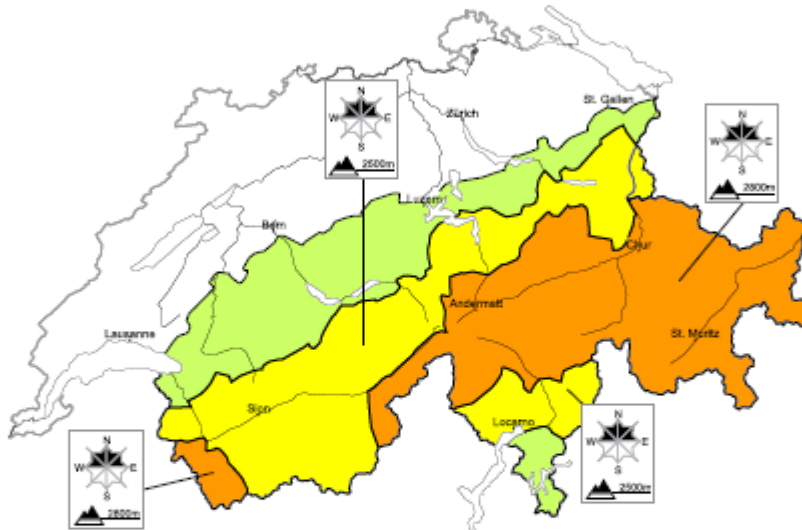
Page 1/4

Snow drift accumulations at elevated altitudes. Moist and west avalanches as the day progresses

Edition: 19.4.2016, 17:00 / Next update: 20.4.2016, 17:00

Dry avalanches

updated on 19.4.2016, 17:00



Direction	Aspect	Activity	Victims (caught, buried)	Danger-level
	ESE	1	1 (1, 1)	2
	SW	1	1 (2, 1)	2
	N	1	1 (1, 1)	3
	NNE	2	1 (1, 0)	3
	NNW	1	1 (6, 3)	2-3
	ENE	2	1 (1, 1)	1-3
	N	1	1 (2, 1)	2
	NNE	1	1 (1, 1)	2
	NNW	1	1 (1, 0)	1
	SW	1	2 (2, 2)	3
	N	1	1 (1, 1)	3
	ESE	2	1 (6, 1)	2
	NE	1	1 (3, 1)	3
	NW	1	1 (3, 1)	2

Dry, region A

Level 3, considerable



Snow drifts

Avalanche prone locations



Danger description

The snow drift accumulations of the last few days represent the main danger. Avalanches can be released by a single winter sport participant and reach medium size. Backcountry touring calls for experience in the assessment of avalanche danger.



News on www.slf.ch

- Home
- Avalanche bulletins
- Snow information
- Prevention
- Research and development
- SLF
- Services and products

- Verhalten abseits der Piste
- Avalanche accidents**
 - Avalanche accidents in current
 - Avalanche accidents last 20 years
 - Accident reports
 - Long-term statistics
 - Publications
- Wissenswertes über Lawinen
- Literatur
- Kernteam Lawinenausbildung

Avalanche accidents in current year

Overview of fatal avalanche accidents in the 2015/16 hydrological year

(October 1, 2015 - September 30, 2016)

Fatalities 2015/16: 20 persons

Backcountry: 15 / Off-piste: 5 / Transportation routes: 0

[Table](#) | [Map](#)



News on www.slf.ch

[Verhalten abseits der Piste](#)
[Avalanche accidents](#)
[Avalanche accidents in current year](#)
[Avalanche accidents last 20 years](#)
[Accident reports](#)
[Long-term statistics](#)
[Publications](#)
[Wissenswertes über Lawinen](#)
[Literatur](#)
[Kernteam Lawinenausbildung](#)

Fatal avalanche accidents (20 years: 1995/96 - 2014/15)

Remarks concerning the table and map

The table can be sorted by clicking on the table header.

The map can be zoomed.

Additional explications concerning the data and how it may be used can be found below the table.

Remark: it may be necessary to refresh the browser to show the most recent data

[Table](#) | [Map](#)

	Winter	Date	Canton	Community	Starting zone	Elevation (m)	Aspect	Activity	Victims (caught, buried)	Danger-level
1	2014/15	06.05.2015	GR	Lumnezia	Piz Stoir / Alp Diesrut	2630	NE	1	1 (1, 1)	
2	2014/15	12.04.2015	VS	Mont-Noble	Pointes des Tsavolires	2980	N	1	2 (4, 4)	2
3	2014/15	04.04.2015	GR	Davos	Brämabüel	2260	NE	2	1 (1, 1)	3
4	2014/15	28.03.2015	UR	Wassen	Chli Griessenhorn	2340	NE	1	1 (2, 2)	2
5	2014/15	28.03.2015	VS	Bourg-Saint-Pierre	Mont Vélan, couloir Hannibal	3500	W	1	1 (1, 0)	2
6	2014/15	27.03.2015	VS	Evolène	Petit Col de Charmotane	3180	SE	1	1 (6, 2)	2
7	2014/15	03.03.2015	GR	Samnaun	Piz Munschuns	2550	N	2	1 (1, 1)	3
8	2014/15	21.02.2015	VS	Bourg-Saint-Pierre	Combe des Morts	2500	N	1	4 (5, 4)	2
9	2014/15	10.02.2015	GR	Val Müstair	Piz Daint	2590	SW	1	1 (1, 1)	3
10	2014/15	08.02.2015	VS	Staldenried	Gspon, Breiti	2320	N	1	1 (1, 1)	3
11	2014/15	02.02.2015	GR	Disentis / Mustér	Piz las Palas / Val Seqnas	1970	NE	2	1 (1, 1)	3
12	2014/15	31.01.2015	GR	Seewis im Prättigau	Vilan	2340	E	1	5 (8, 7)	3
13	2014/15	31.01.2015	SG	Wildhaus-Alt St.	Hinderrugg	2250	W	2	1 (1, 0)	3