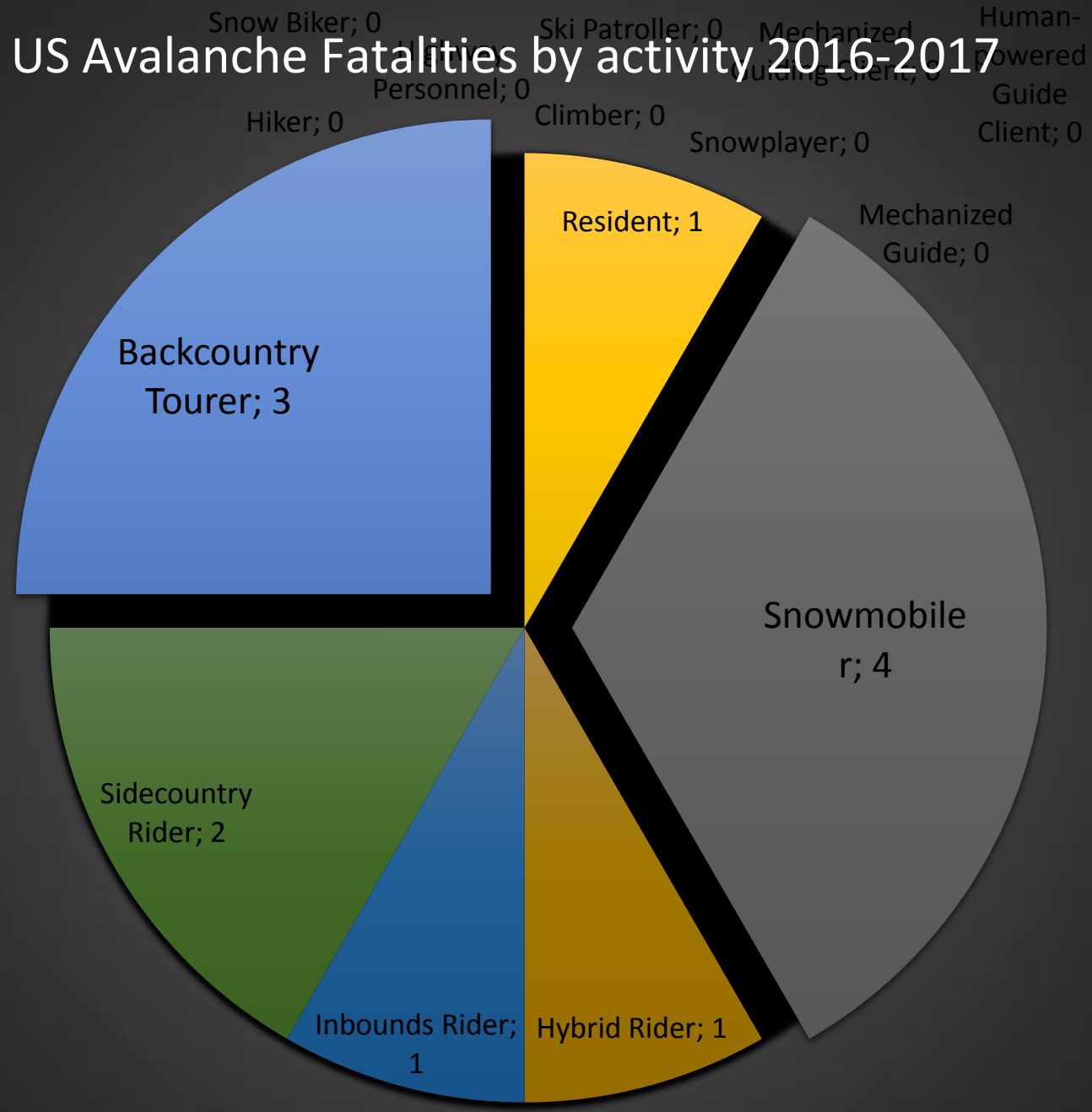


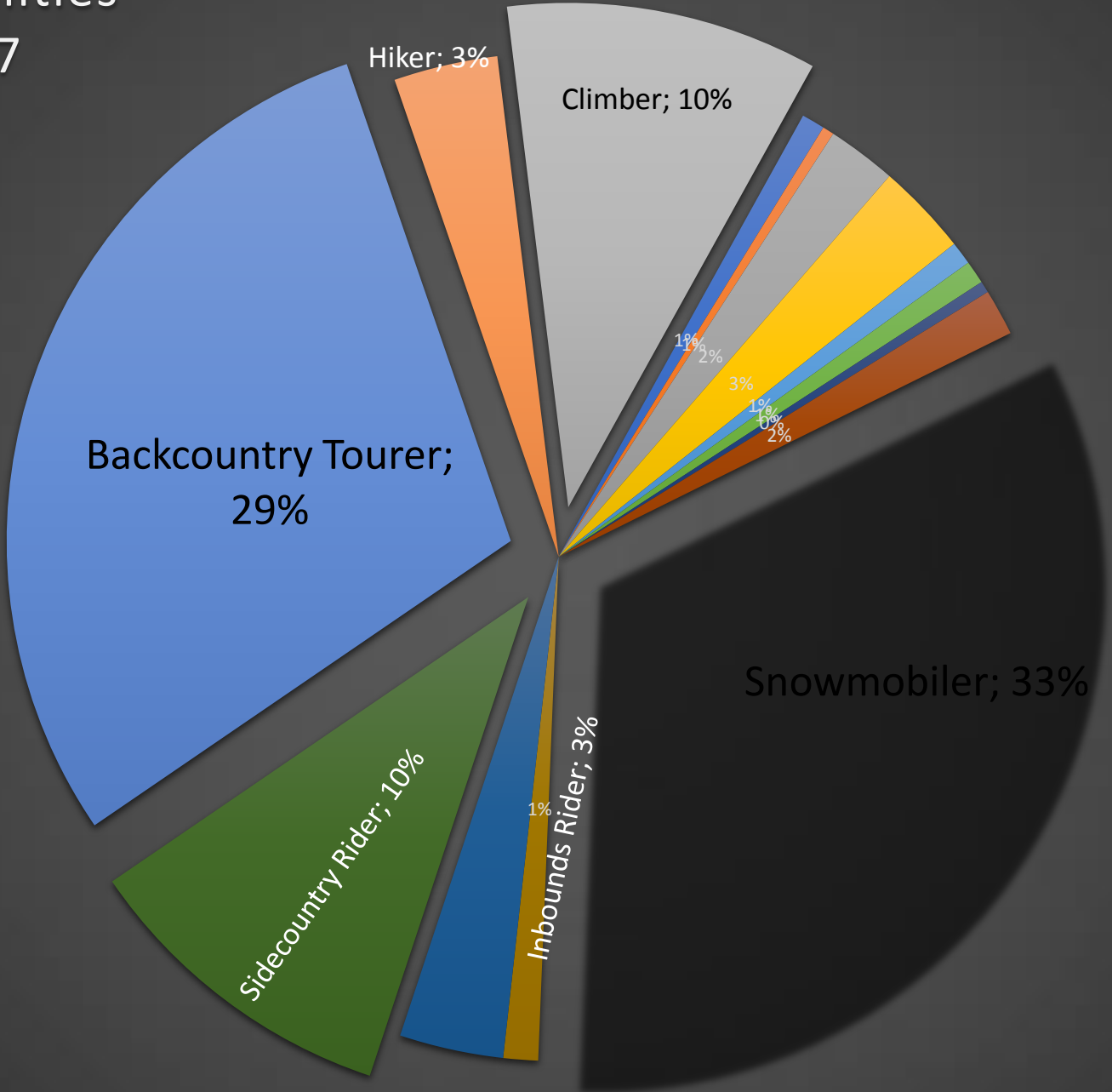
US Avalanche Fatalities by activity 2016-2017

12 people died in the US during the 2016-17 season



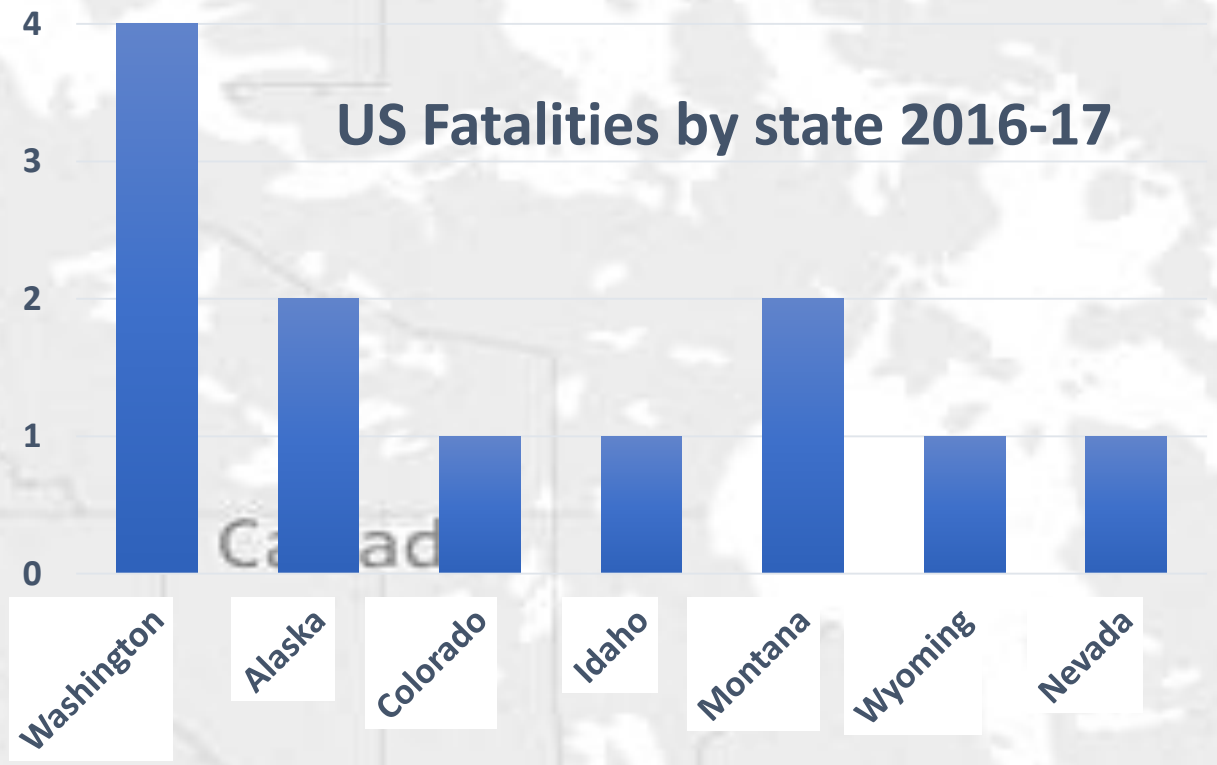
Source: Colorado Avalanche Information Center

US Avalanche Fatalities by activity 2008-17



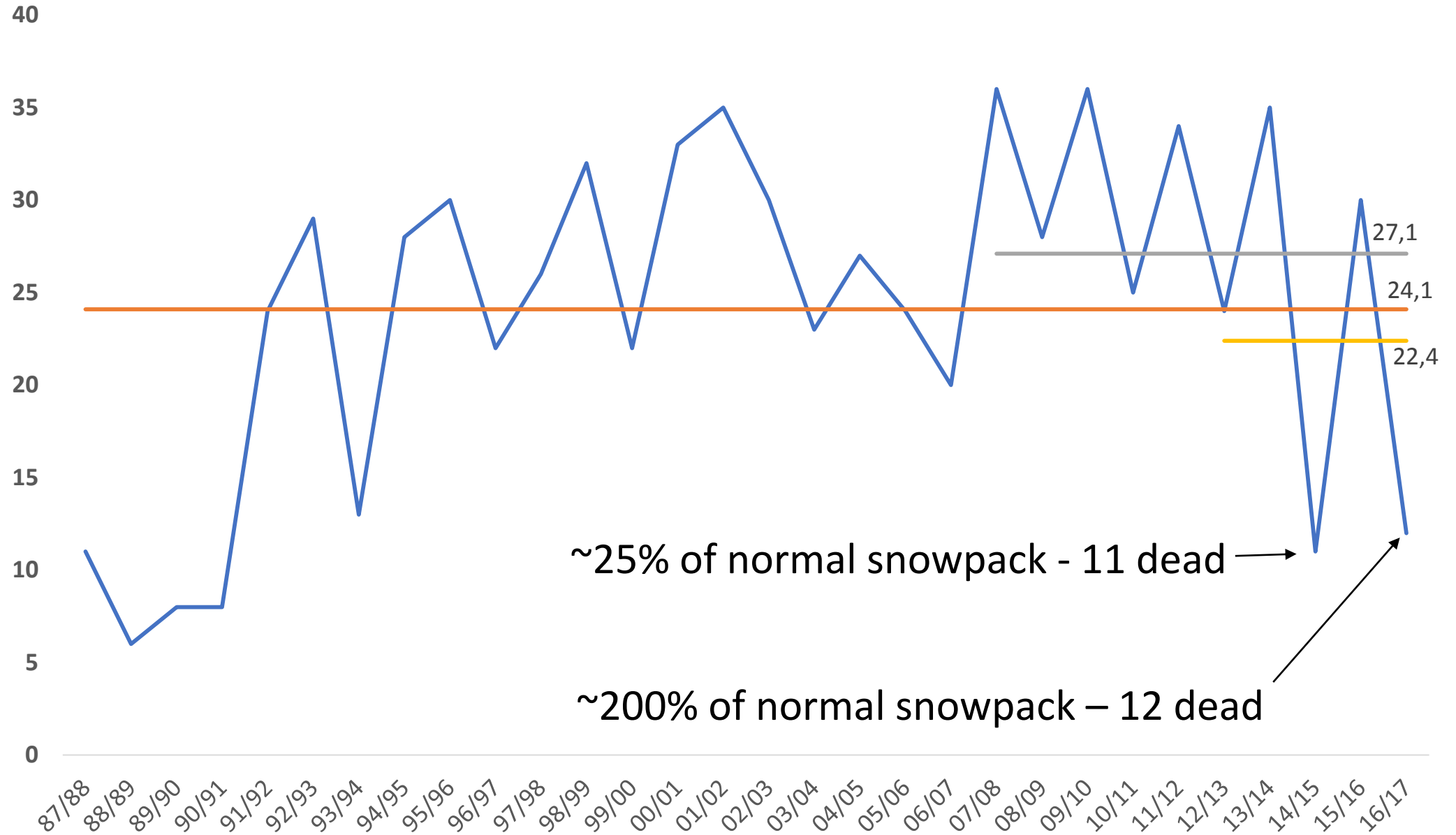
Source: Colorado Avalanche Information Center

US Fatalities by state 2016-17



Source: Colorado Avalanche Information Center, CAIC

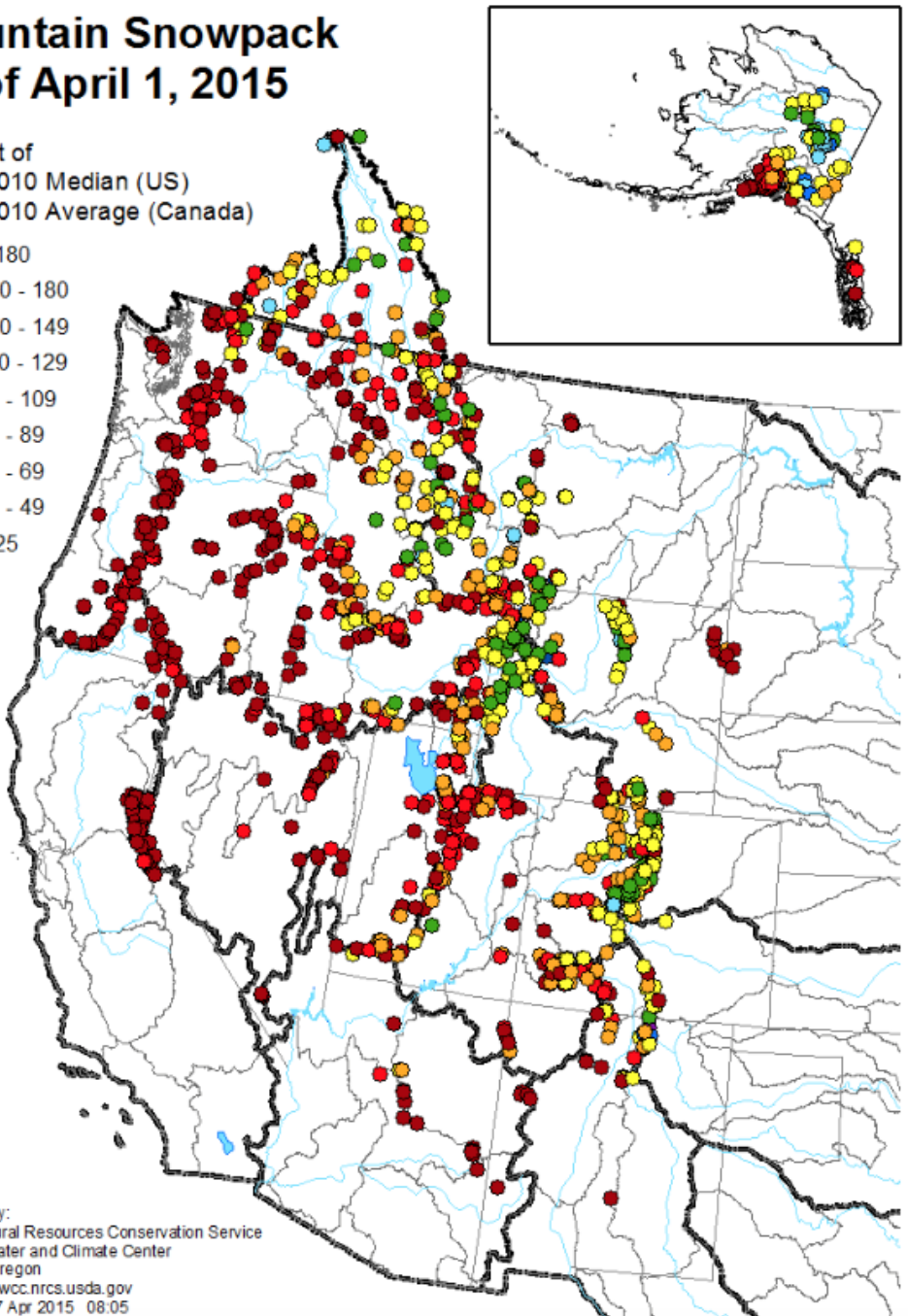
US Avalanche Fatalities last 30 years



Mountain Snowpack as of April 1, 2015

Percent of
1981-2010 Median (US)
1981-2010 Average (Canada)

- > 180
- 150 - 180
- 130 - 149
- 110 - 129
- 90 - 109
- 70 - 89
- 50 - 69
- 25 - 49
- < 25

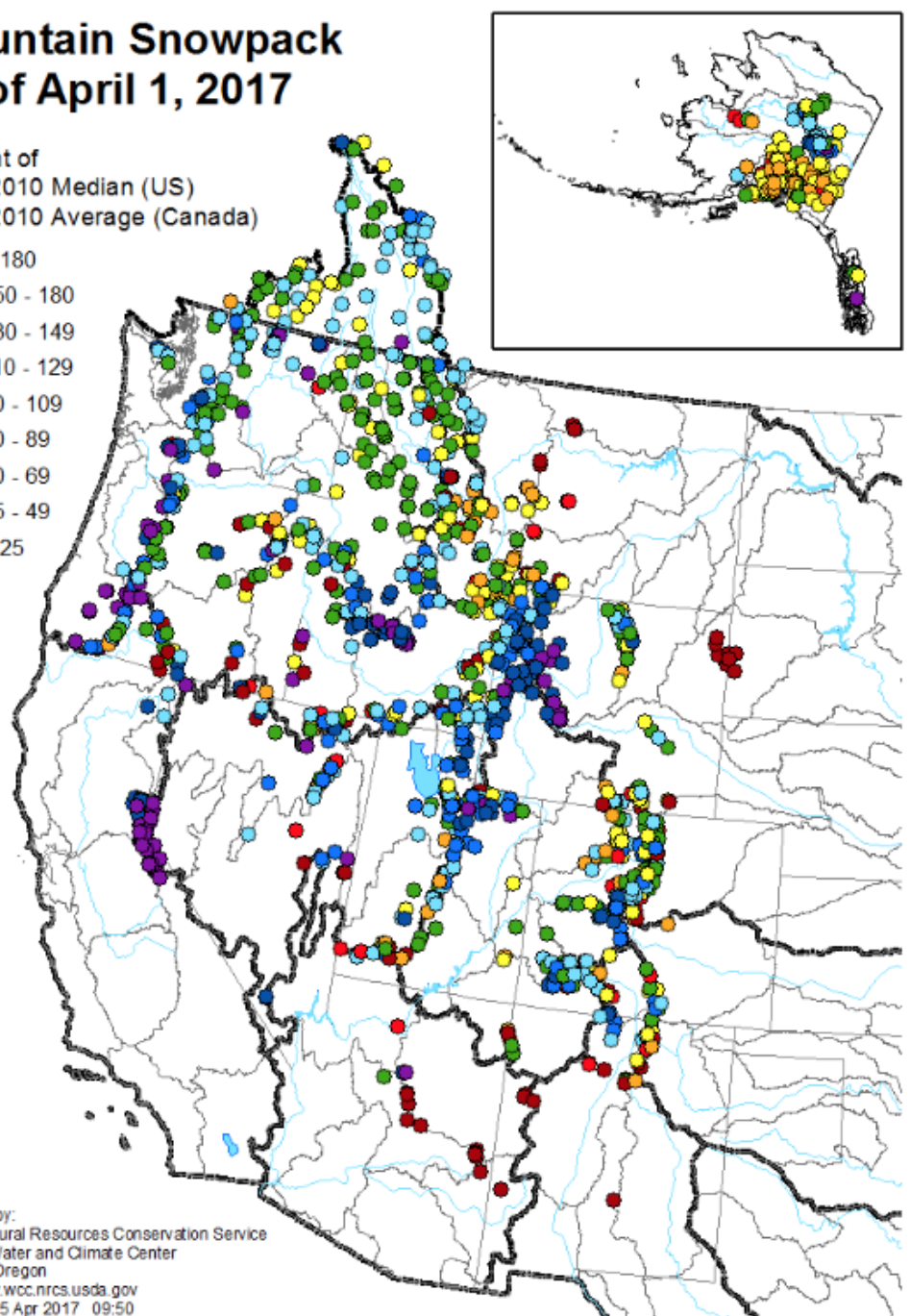


Prepared by:
USDA Natural Resources Conservation Service
National Water and Climate Center
Portland, Oregon
<http://www.wcc.nrcs.usda.gov>
Created: 7 Apr 2015 08:05

Mountain Snowpack as of April 1, 2017

Percent of
1981-2010 Median (US)
1981-2010 Average (Canada)

- > 180
- 150 - 180
- 130 - 149
- 110 - 129
- 90 - 109
- 70 - 89
- 50 - 69
- 25 - 49
- < 25



Prepared by:
USDA Natural Resources Conservation Service
National Water and Climate Center
Portland, Oregon
<http://www.wcc.nrcs.usda.gov>
Created: 5 Apr 2017 09:50

50% dead in a 200% snow year - why?

Improved safety equipment

Social media campaigns

Avalanche education

Safety/awareness courses

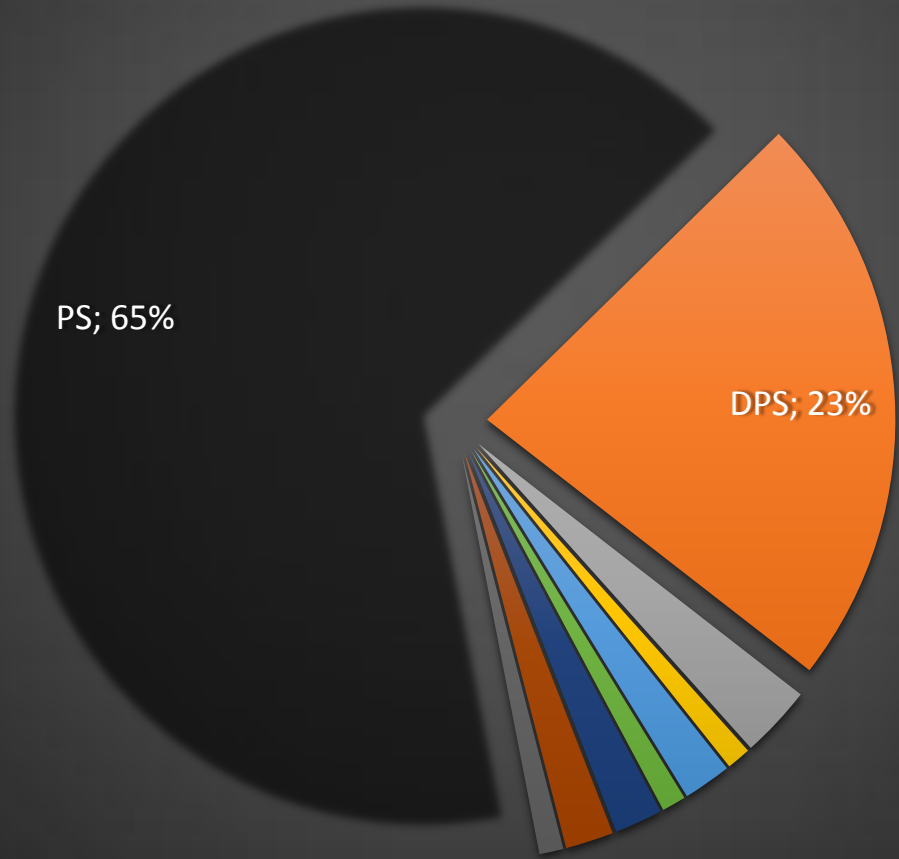
Advisory issuance

”Less persistent problems”

Luck

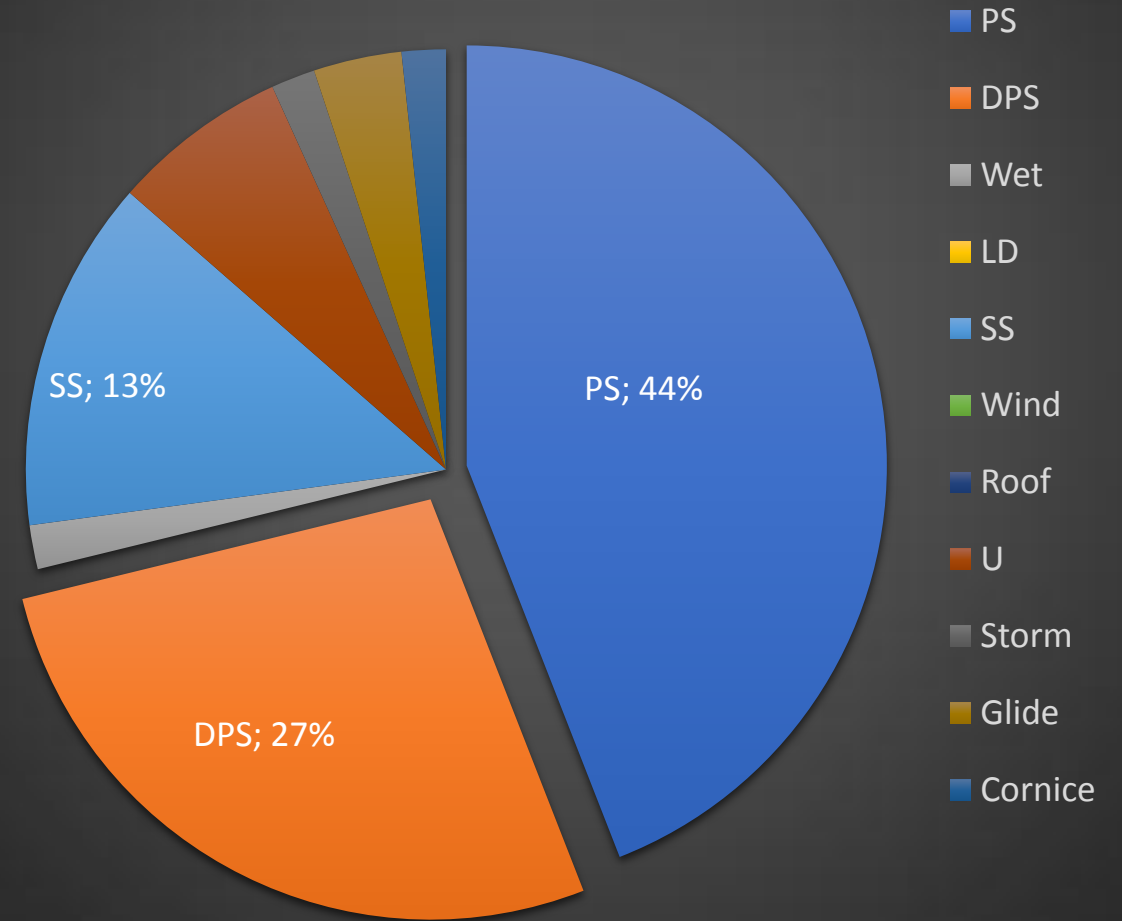
“If our fatality rate had stayed steady while the use increased we might well expect over 200 U.S. avalanche fatalities per winter!” – [The National Avalanche Center](#)

Colorado accidents by avalanche problem 1999-2017



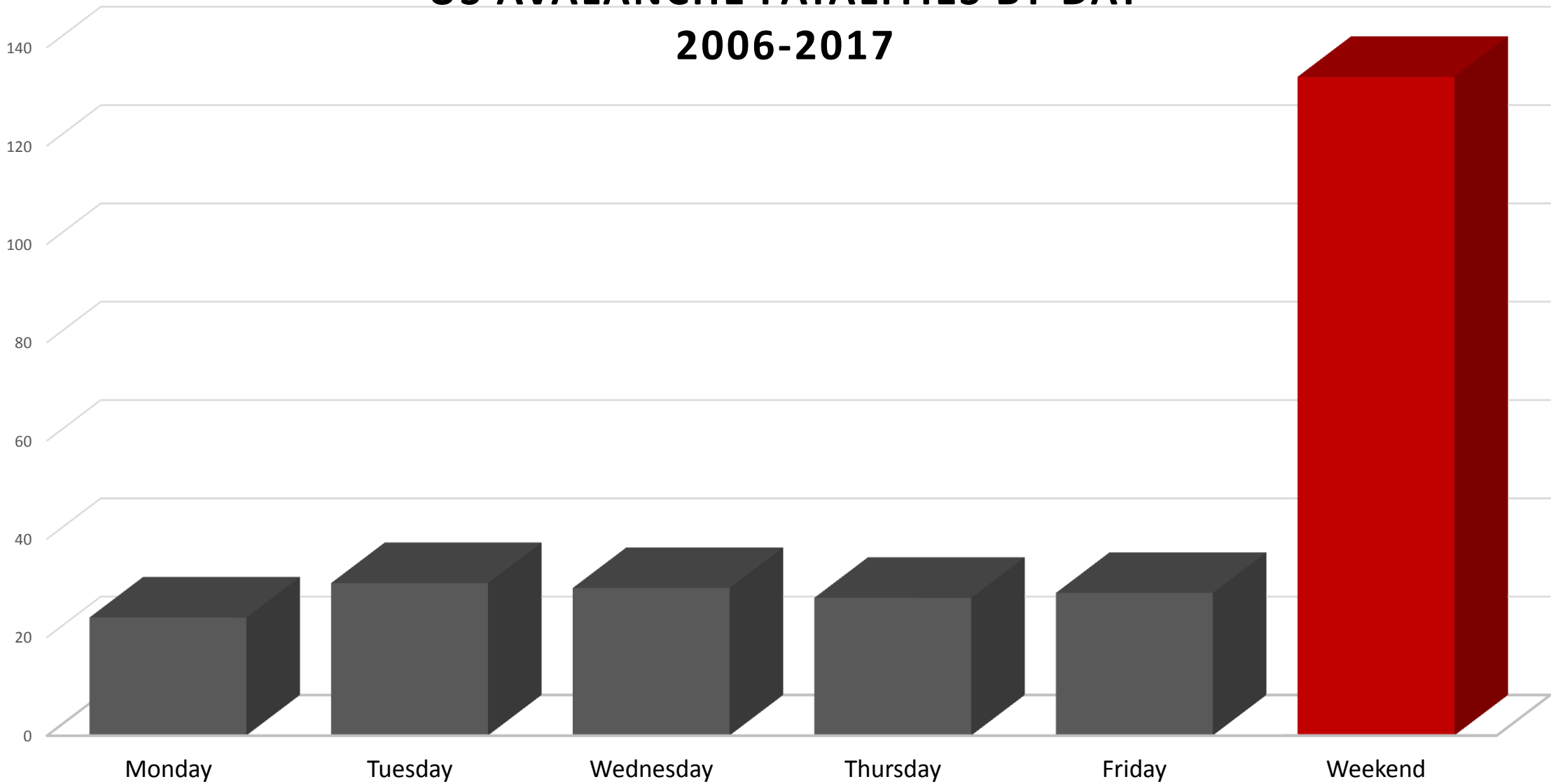
Source: Colorado Avalanche Information Center

Utah accidents by avalanche problem 2000-2017



Source: Utah Avalanche Center

US AVALANCHE FATALITIES BY DAY 2006-2017



Source: Colorado Avalanche Information Center