

A German Shepherd dog is shown in a snowy mountain landscape. The dog is in the foreground, looking towards the left. The background is a bright, snowy mountain peak. The text is overlaid on the image.

# **Dogs in mountain servis in Czech republic**

**Horská služba ČR**

**Josef Hepnar**



Kalaallit Nunaat (Greenland)

Island (Iceland)

Sverige (Sweden)

Norge (Norway)

Suomi (Finland)

Россия (Russia)

Danmark (Denmark)

United Kingdom

Ireland Eire

Deutschland (Germany)

Polska (Poland)

Беларусь (Belarus)

Україна (Ukraine)

Österreich (Austria)

France

România (Romania)

España (Spain)

Italia (Italy)

Ελλάς (Greece)

Türkiye (Turkey)

Қазақстан (Kazakhstan)

Монгол Улс (Mongolia)

Portugal

المغرب (Morocco)

الجزائر (Algeria)

ليبيا (Libya)

مصر (Egypt)

السعودية (Saudi Arabia)

عُمان (Oman)

أفغانستان (Afghanistan)

پاکستان (Pakistan)

नेपाल (Nepal)

中国 (China)

대한민국 (South Korea)

日本 (Japan)

United States

Mexico (Mexico)

Cuba

Venezuela

Colombia

Guyana

Suriname

Brasil

موريتانيا (Mauritania)

Mali

Niger

تشاد (Chad)

السودان (Sudan)

اليمن (Yemen)

South Sudan

Ethiopia

South Sudan

Kenya

Soomaaliya (Somalia)

Myanmar (Burma)

ประเทศไทย (Thailand)

Việt Nam (Vietnam)

Pilipinas (Philippines)

Malaysia

Gabon

DR Congo

Angola

Zambia

Moçambique

موزمبيق (Mozambique)

Baffin Bay

Northwestern Passages

Hudson Bay

Gulf of St Lawrence

Gulf of Mexico

Caribbean Sea

Gulf of Guinea

Greenland Sea

Barents Sea

Kara Sea

Norwegian Sea

North Sea

Bay of Biscay

Mediterranean Sea

Gulf of Aden

Gulf of Guinea

Arabian Sea

Laccadive Sea

Bay of Bengal

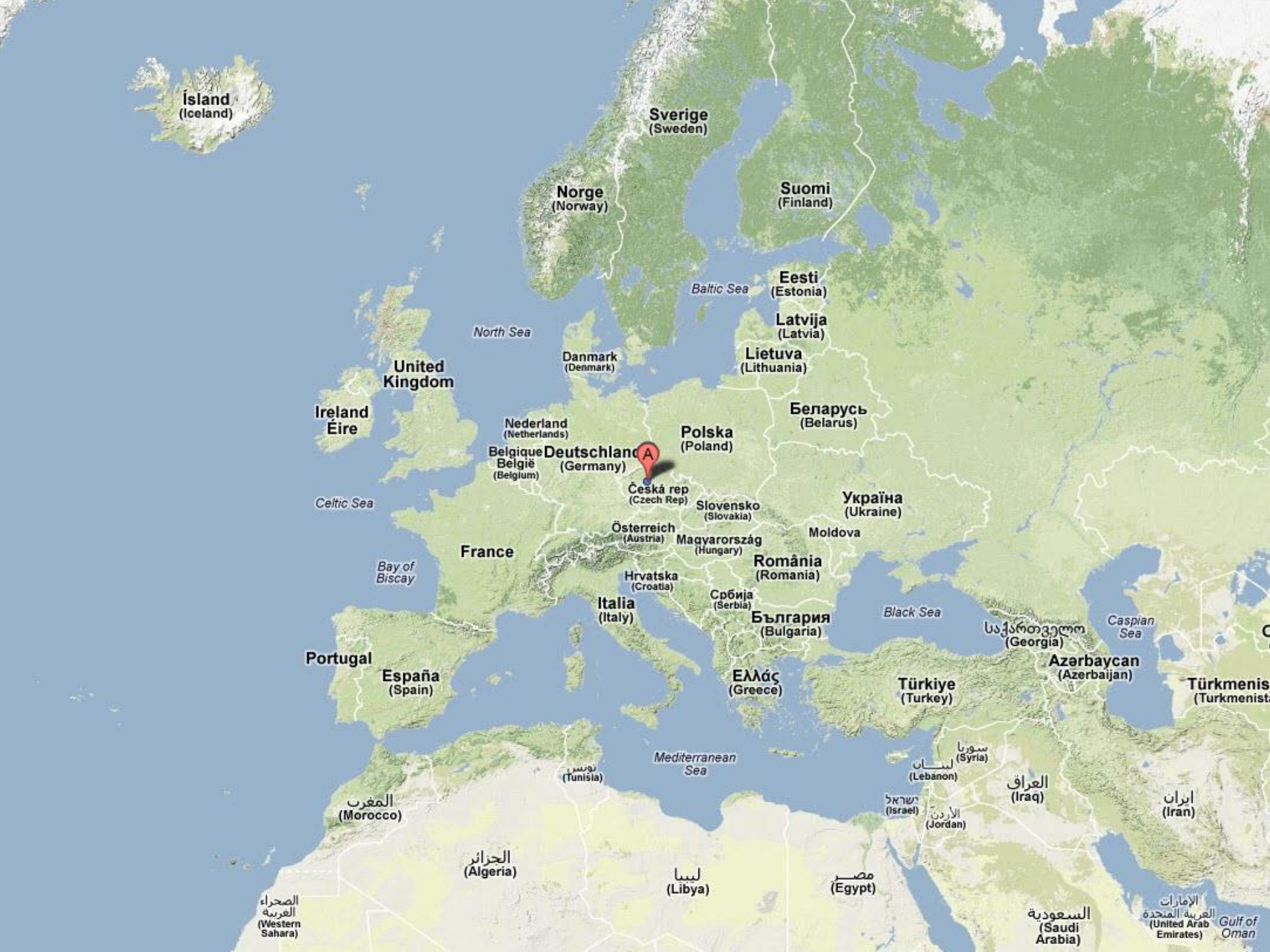
Andaman Sea

Gulf of Thailand

South China Sea

Philippine Sea

East China Sea



Ísland  
(Iceland)

Sverige  
(Sweden)

Norge  
(Norway)

Suomi  
(Finland)

Eesti  
(Estonia)

Latvija  
(Latvia)

Lietuva  
(Lithuania)

North Sea

Baltic Sea

Danmark  
(Denmark)

United Kingdom

Ireland  
Éire

Nederland  
(Netherlands)

Belgique  
België  
(Belgium)

Deutschland  
(Germany)

Polska  
(Poland)

Беларусь  
(Belarus)

Česká rep  
(Czech Rep)

Slovensko  
(Slovakia)

Україна  
(Ukraine)

Celtic Sea

France

Österreich  
(Austria)

Magyarország  
(Hungary)

Moldova

Bay of Biscay

Hrvatska  
(Croatia)

România  
(Romania)

Portugal

España  
(Spain)

Italia  
(Italy)

Sрбија  
(Serbia)

България  
(Bulgaria)

Black Sea

საქართველო  
(Georgia)

Caspian Sea

Azərbaycan  
(Azerbaijan)

Türkmenist  
(Turkmenist)

Ελλάς  
(Greece)

Türkiye  
(Turkey)

Mediterranean Sea

تونس  
(Tunisia)

سوريا  
(Syria)

لبنان  
(Lebanon)

العراق  
(Iraq)

ایران  
(Iran)

المغرب  
(Morocco)

الجزائر  
(Algeria)

ليبيا  
(Libya)

مصر  
(Egypt)

ישראל  
(Israel)

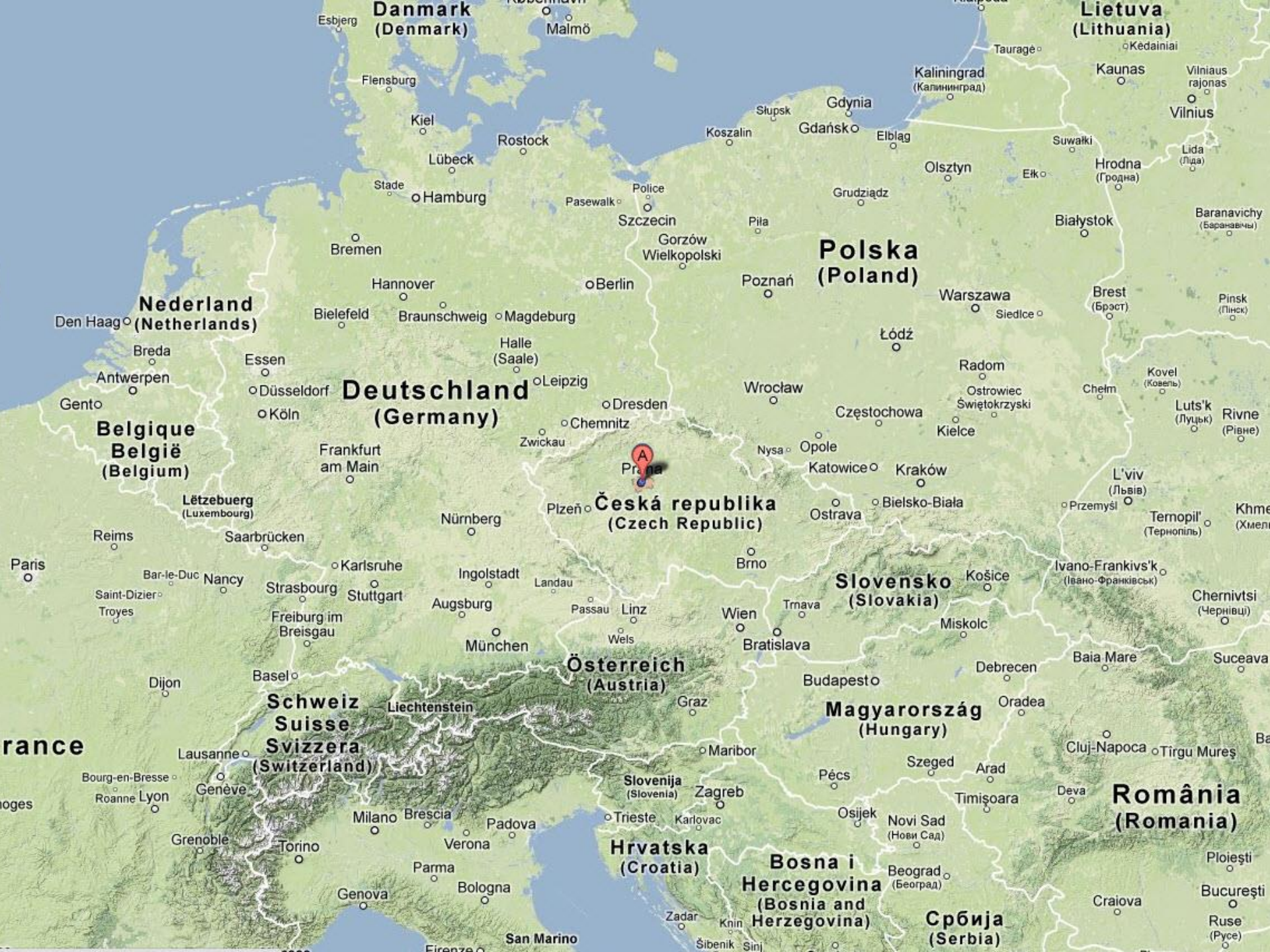
الأردن  
(Jordan)

السعودية  
(Saudi Arabia)

الإمارات  
العربية المتحدة  
(United Arab Emirates)

Gulf of Oman

الصحراء  
العربية  
(Western Sahara)



**Danmark**  
(Denmark)

**Lietuva**  
(Lithuania)

**Polska**  
(Poland)

**Deutschland**  
(Germany)

**Česká republika**  
(Czech Republic)

**Slovensko**  
(Slovakia)

**Österreich**  
(Austria)

**Magyarország**  
(Hungary)

**Schweiz**  
**Suisse**  
**Svizzera**  
(Switzerland)

**România**  
(Romania)

**Hrvatska**  
(Croatia)

**Bosna i Hercegovina**  
(Bosnia and Herzegovina)

**Србија**  
(Serbia)

**Nederland**  
(Netherlands)

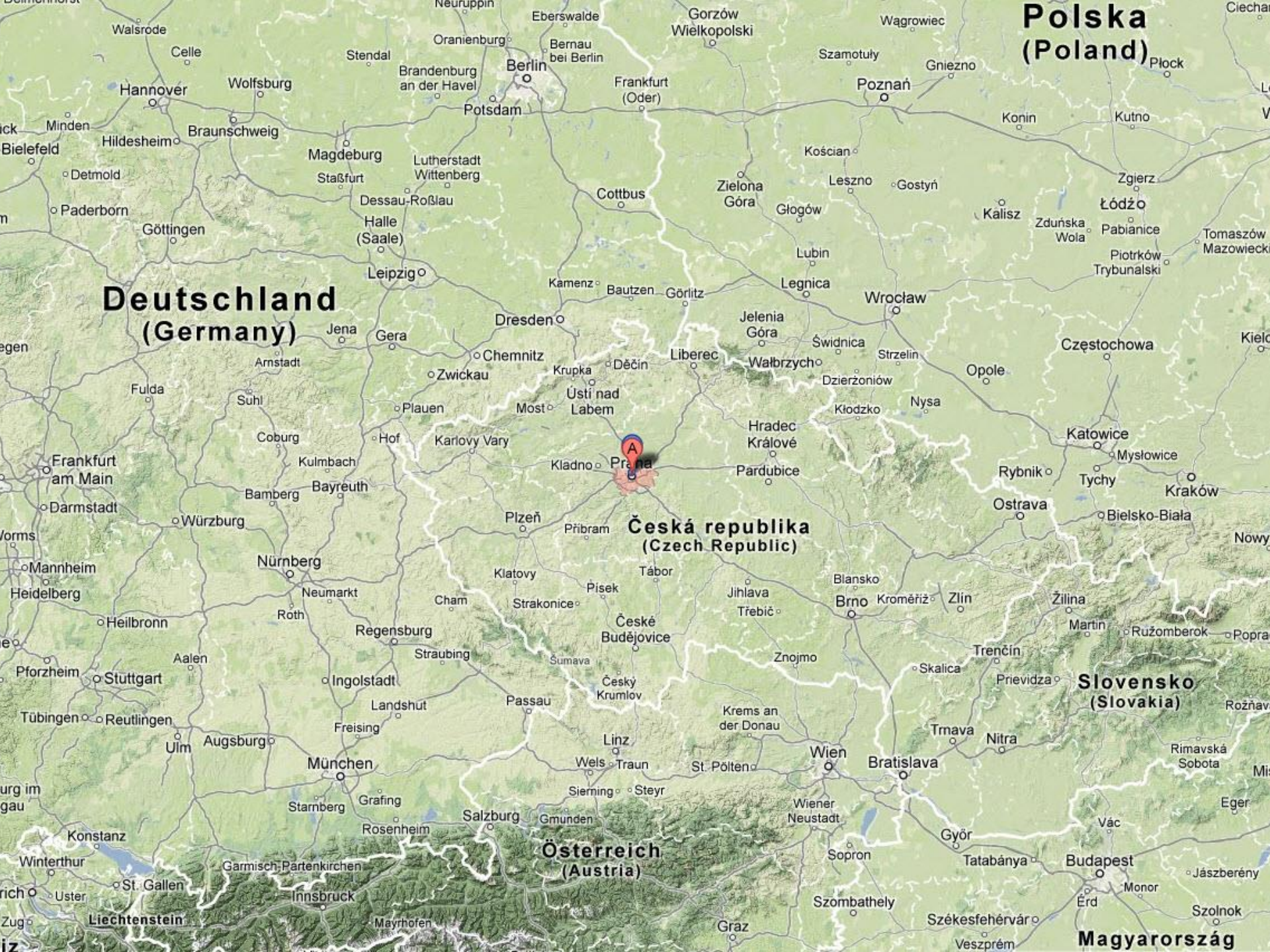
**Belgique**  
**België**  
(Belgium)

**Lëtzebuerg**  
(Luxembourg)

**France**

**Slovenija**  
(Slovenia)

**Srbija**  
(Serbia)



**Deutschland  
(Germany)**

**Polska  
(Poland)**

**Česká republika  
(Czech Republic)**

**Österreich  
(Austria)**

**Slovensko  
(Slovakia)**

**Magyarország**

**Práha**

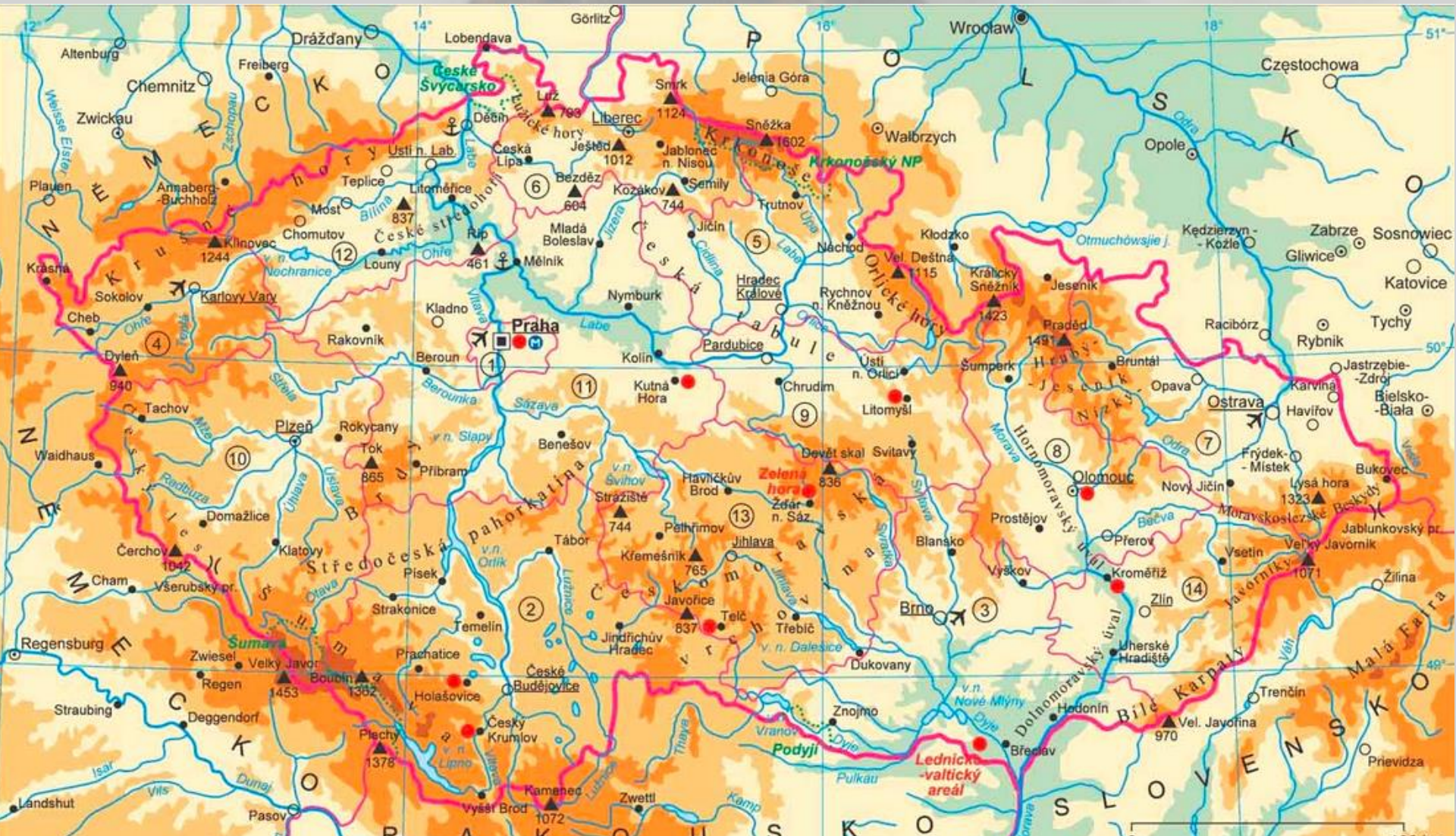
**A**

# Sněžka

## 1602 M



# Czech republic



# Organization of dogs in HS

- In Czech republic we have 14 testing dogs working for mountain rescue





# The use of dogs

A German Shepherd dog is shown running through a snowy field. The dog is in profile, facing left, with its mouth open and tongue out, appearing happy and energetic. The background is a soft, out-of-focus white, suggesting a snowy or very bright environment. The dog's fur is a mix of black and tan.

- Search in avalanche
- Search area



















# Test Procedure

A German Shepherd dog is shown in a snowy mountain landscape. The dog is in the foreground, looking towards the camera with its mouth slightly open. The background features a snow-covered mountain peak under a clear sky. The overall scene is bright and wintry.

- Each handler and dog must have met the test
- handling and dog obedience
- Search in avalanche
- theory of avalanches, and search through the avalanche search
- search in the mountain terrain
- topography and the use of GPS

















# Organization courses HS



- Avalanche course - the first part of the test
- Attestation course - the second part of the test
- Autumn Course - preparation for winter
- Other courses and exercises - once a month

# GPS receiver garmin

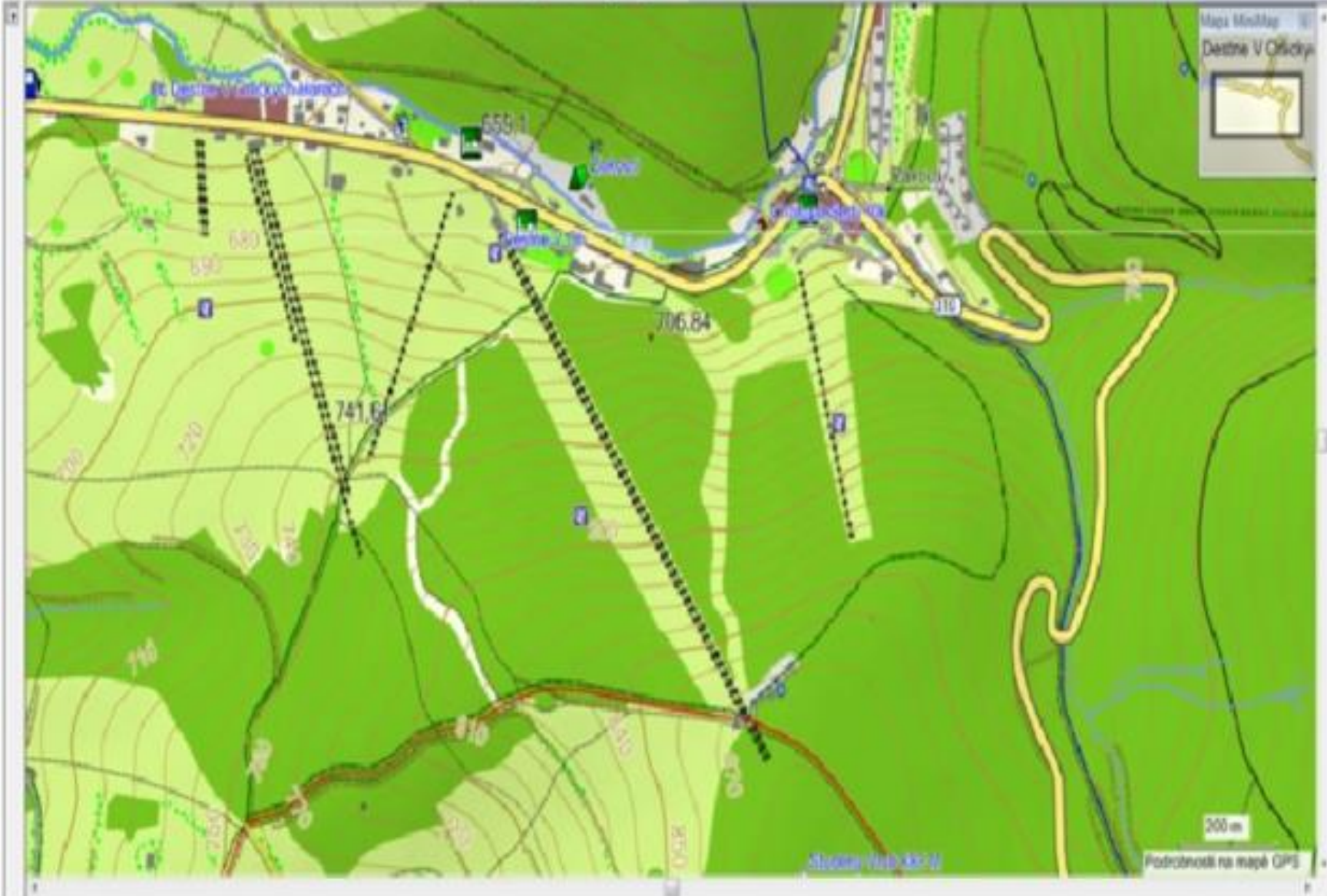
- Topographic map of Czech republic
- Management map - grid approx 100x100m with a unique global identification of each part
- Garmin Astro - dog tracking system with wireless collar





# Topographical Maps

- Searcher and commanding officer can choose any available map - in Garmin unit or in computer
- Agreement with Police and Army for using one specific topographic map - map produced by Czech Army





# Management map

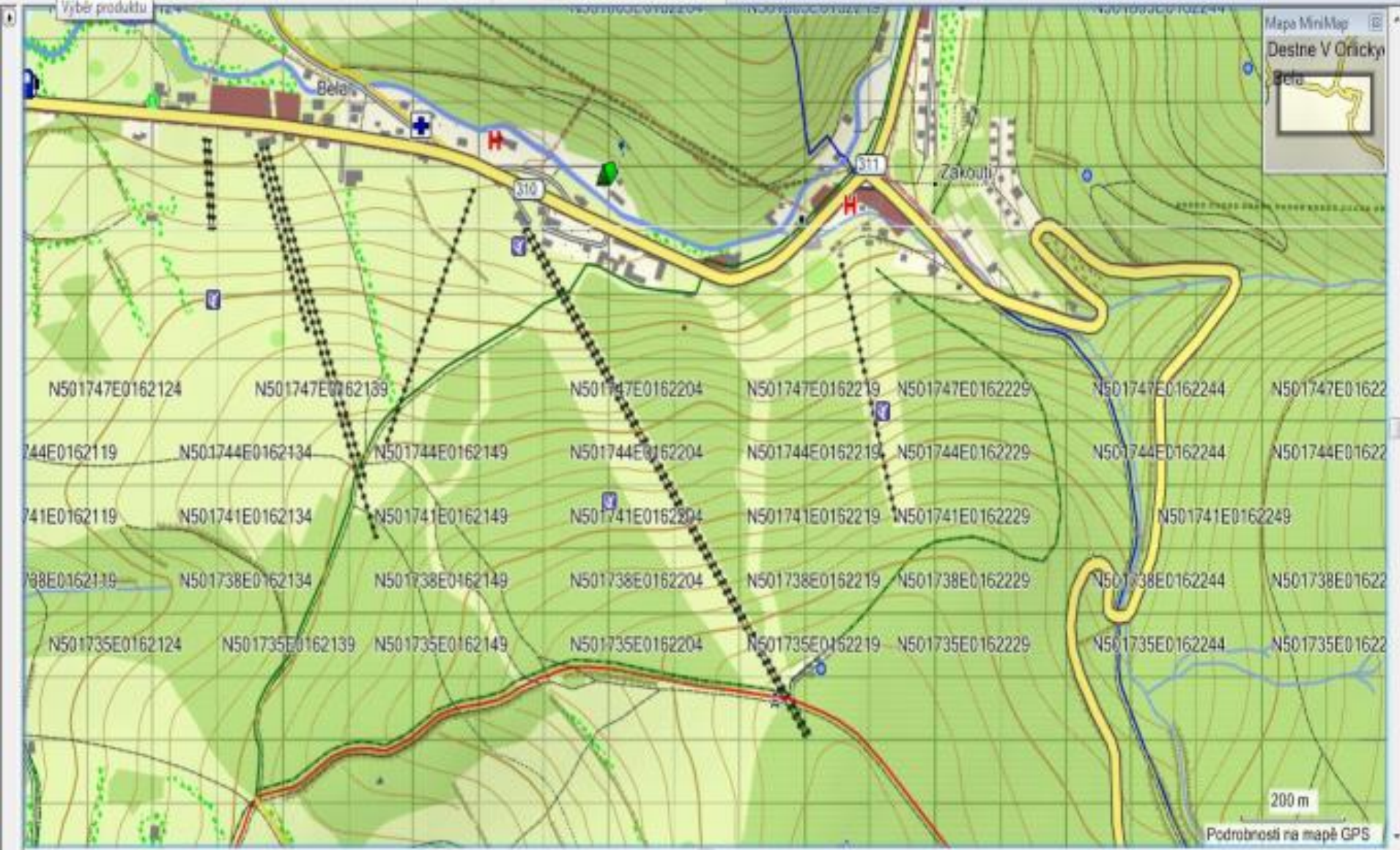
- Grid 100x100 m = 3' x 5'
- Unique global identification complete label:

**N504858E0152129**

short name: **N858E129**

- Label is created from latitude and longitude coordinates  
N50°48'58" E015°21'29"





Mapa MiniMap  
 Destině V Orlický  
 Bela

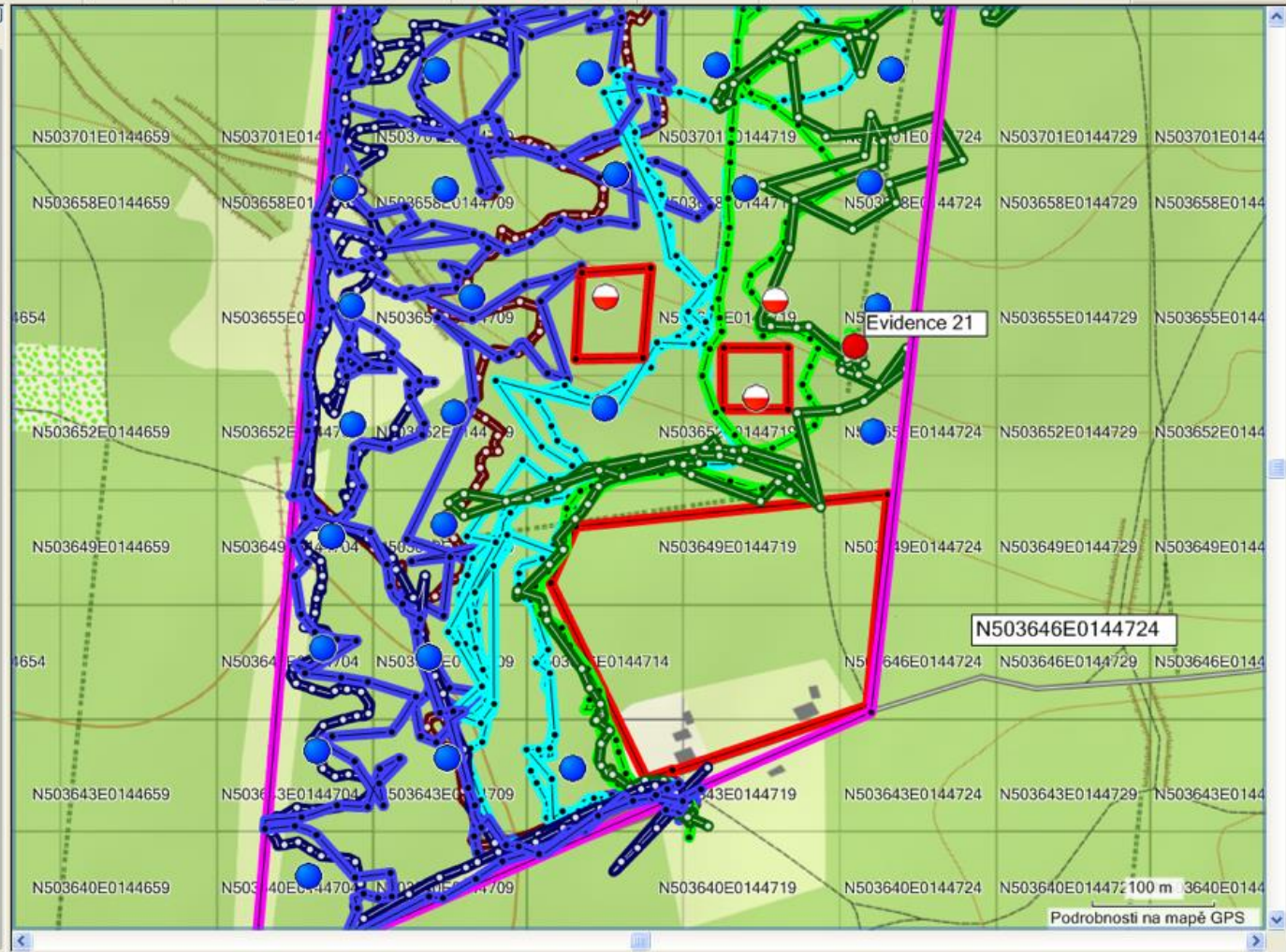




Mapy Trasové body(37) Trasy Stopy(12)

Zobrazit trasové body kategorie:  
Všechny kategorie

Název	Symbol	Police	Na
013	●	N50 36 54.5 E14 47 25.4	
014	●	N50 36 58.0 E14 47 12.5	
016	●	N50 37 00.9 E14 47 08.4	
017	●	N50 37 00.8 E14 47 11.7	
018	●	N50 37 01.2 E14 47 17.1	
019	●	N50 37 00.8 E14 47 21.3	
020	●	N50 37 01.0 E14 47 25.3	
021	●	N50 37 04.0 E14 47 26.0	
022	●	N50 37 04.1 E14 47 20.4	
024	●	N50 37 03.9 E14 47 16.3	
025	●	N50 37 04.0 E14 47 11.4	
026	●	N50 37 10.1 E14 47 11.6	
027	●	N50 37 10.0 E14 47 26.2	
028	●	N50 37 07.3 E14 47 16.8	
030	●	N50 37 07.2 E14 47 26.1	
031	●	N50 37 07.0 E14 47 11.6	
032	●	N50 37 10.1 E14 47 21.2	
033	●	N50 36 58.0 E14 47 16.8	
034	●	N50 36 55.3 E14 47 21.6	
035	●	N50 36 57.9 E14 47 22.2	
009	●	N50 36 54.6 E14 47 08.7	
015	●	N50 36 57.8 E14 47 08.6	
006	●	N50 36 48.5 E14 47 11.1	
029	●	N50 37 07.1 E14 47 21.2	



# Communication

A German Shepherd dog is the background of the slide. The dog is wearing a dark collar with a silver metal chain. It has its mouth slightly open, showing its teeth and tongue. The dog's fur is a mix of black and tan. The background is a light, hazy sky.

- Online - with Garmin collar DC20,30,40 online information in commanding handheld and computer
- Via radio - commanding officer can use voice procedural control of searchers followed by their confirmations



Dresden

Chemnitz

Legnica

Wrocław

Liberec

Wałbrzych

Opole

Częstochowa

Ústí nad Labem

Krkonoše

Karlovy Vary

Hradec Králové

Katowice

PRAHA

Pardubice

Rybnik

Tychy

Pízeň

Ostrava

Bielsko-Biala

Šumava

Olomouc

Jihlava

Brno

Zlín

Žilina

Regensburg

České Budějovice

Západ

en

Linz

Donau

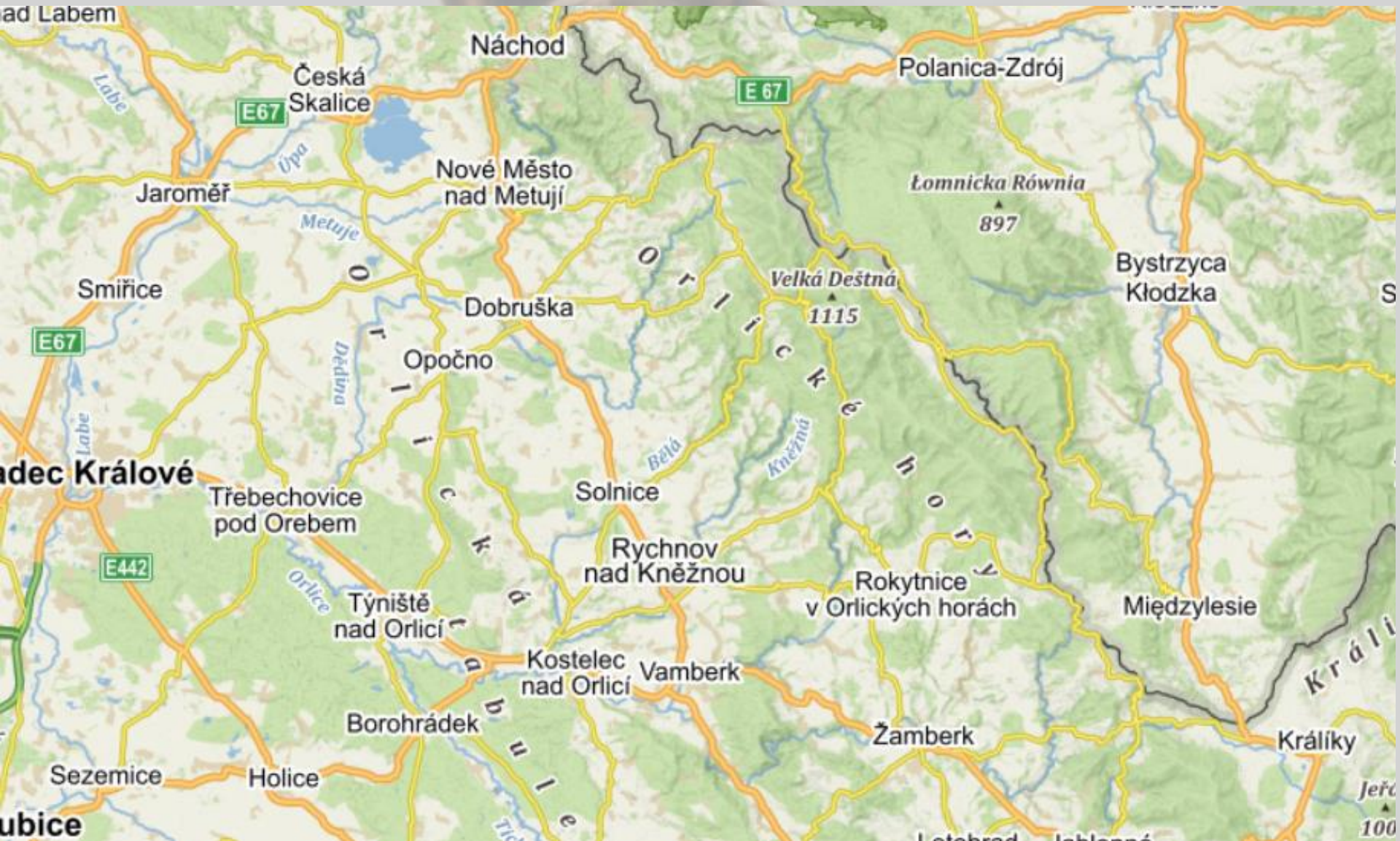
WIEN

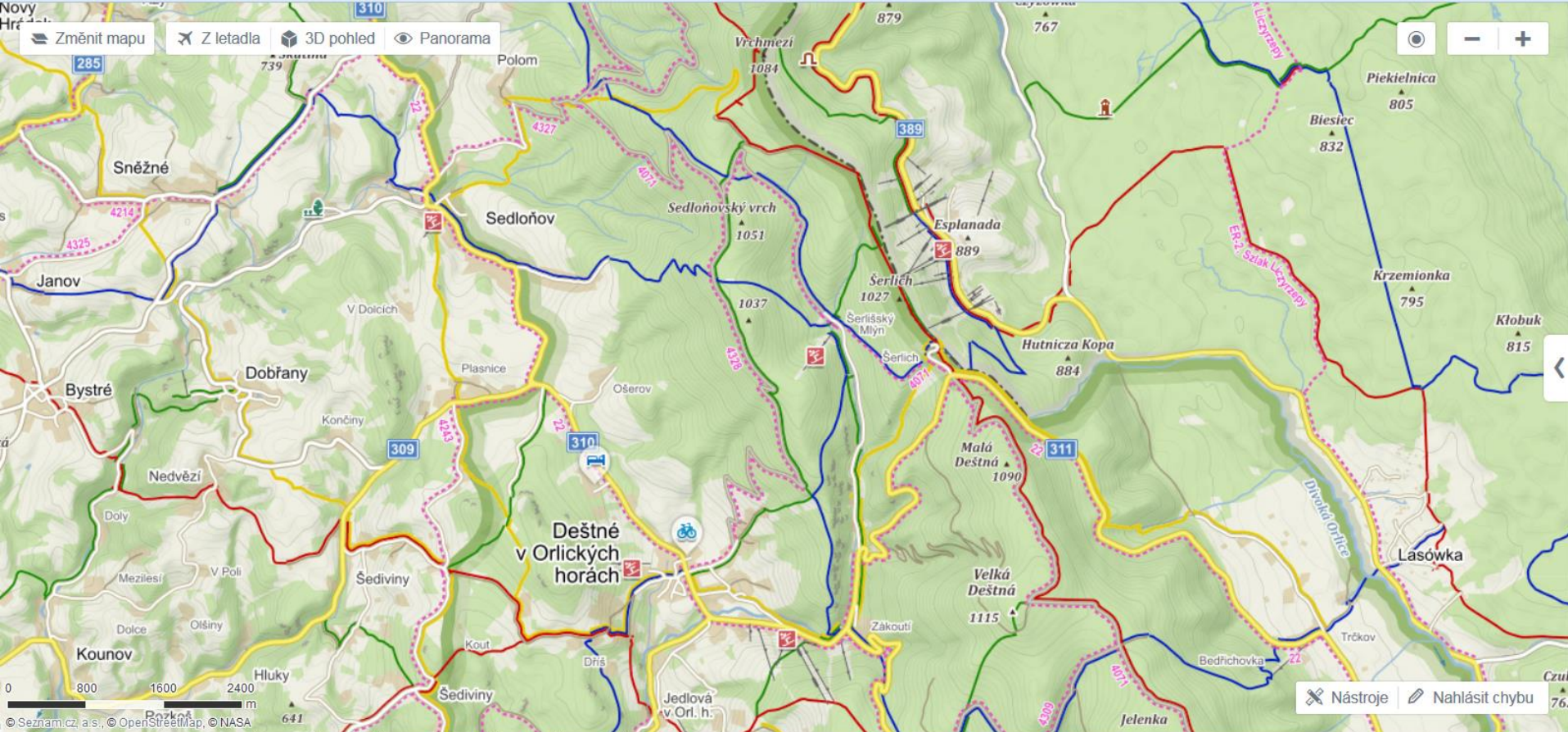
Nitra

Baranovsk  
Bystřice

BRATISLAVA

# Orlické hory



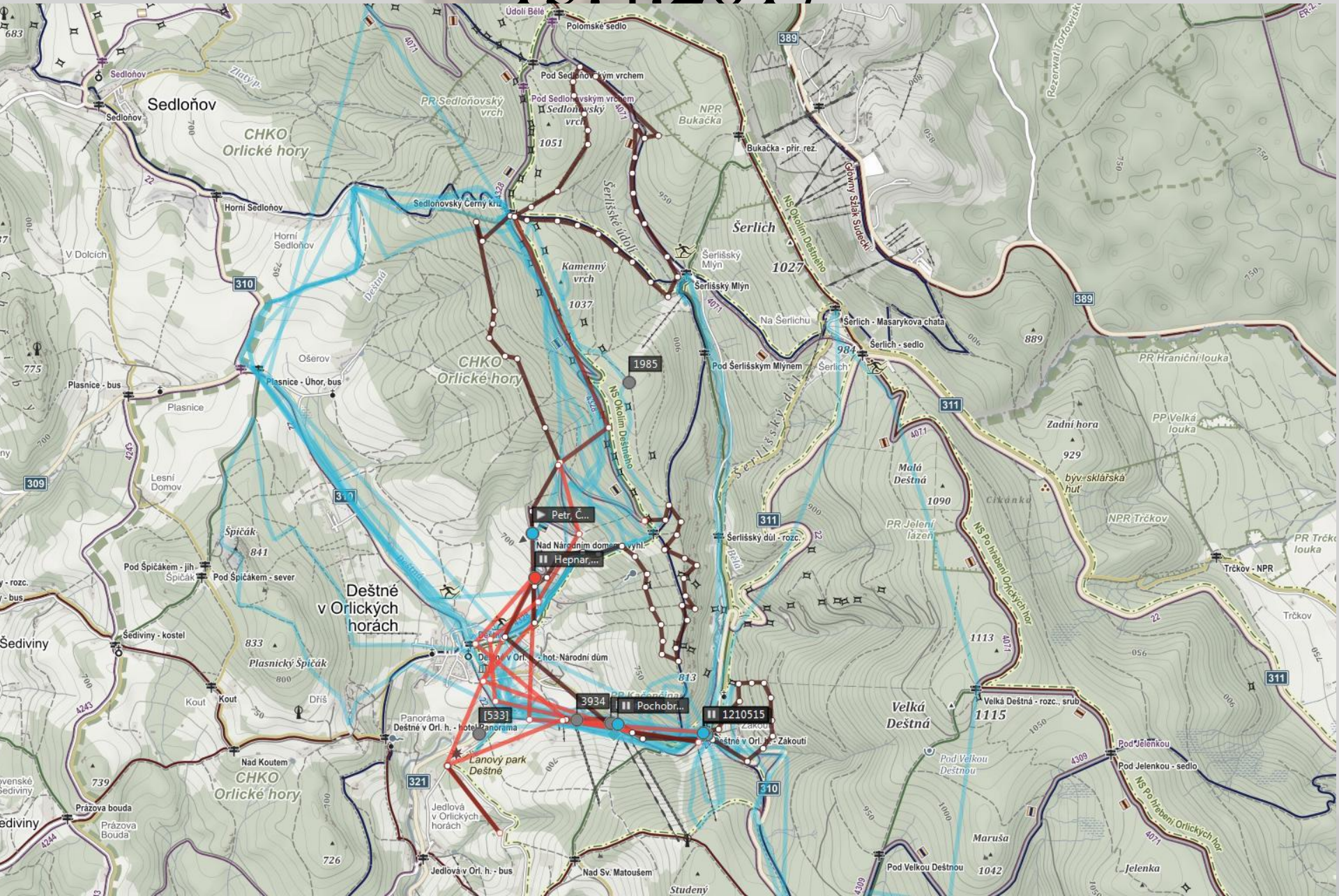




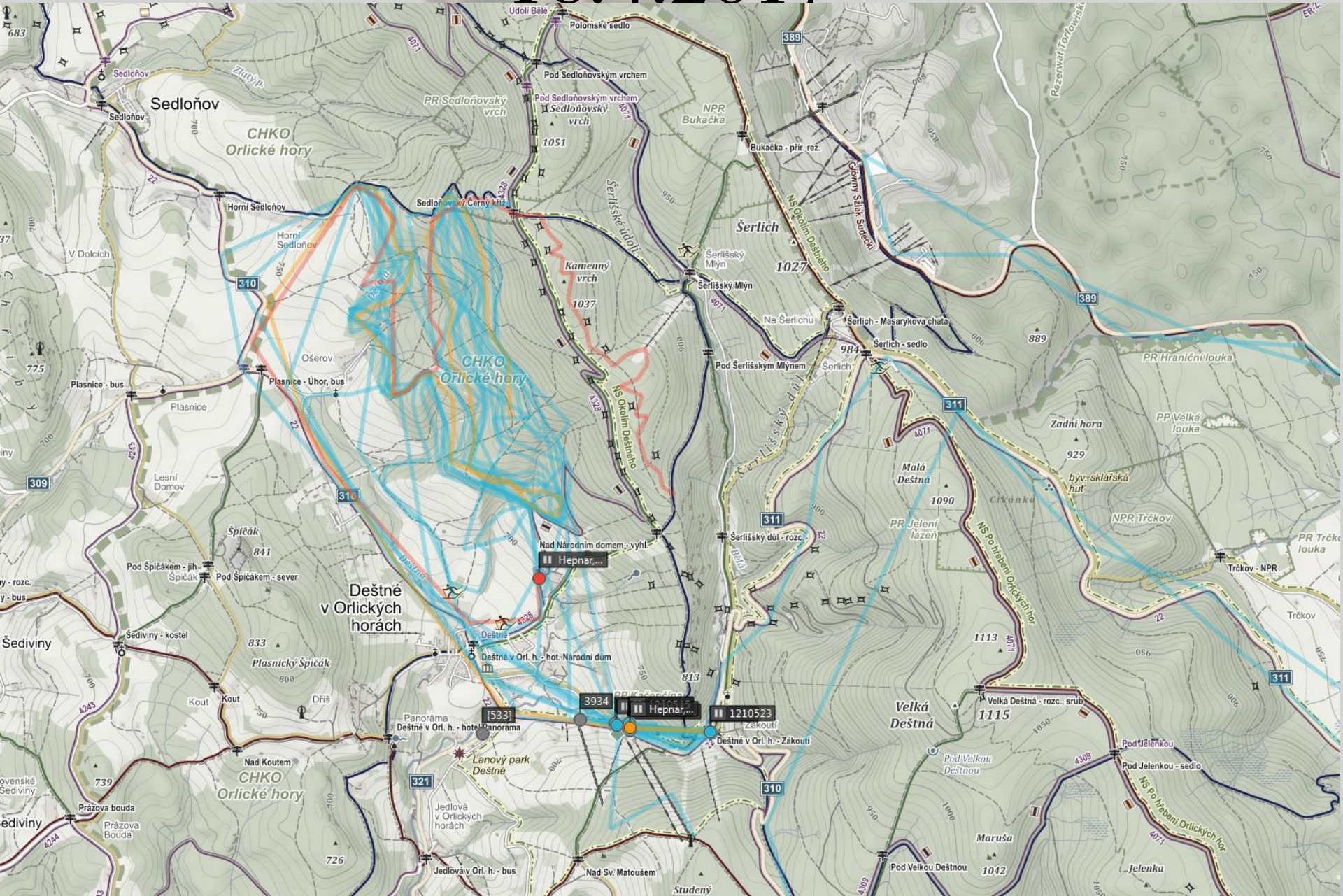
# Serching 15.4.-16.4.2017

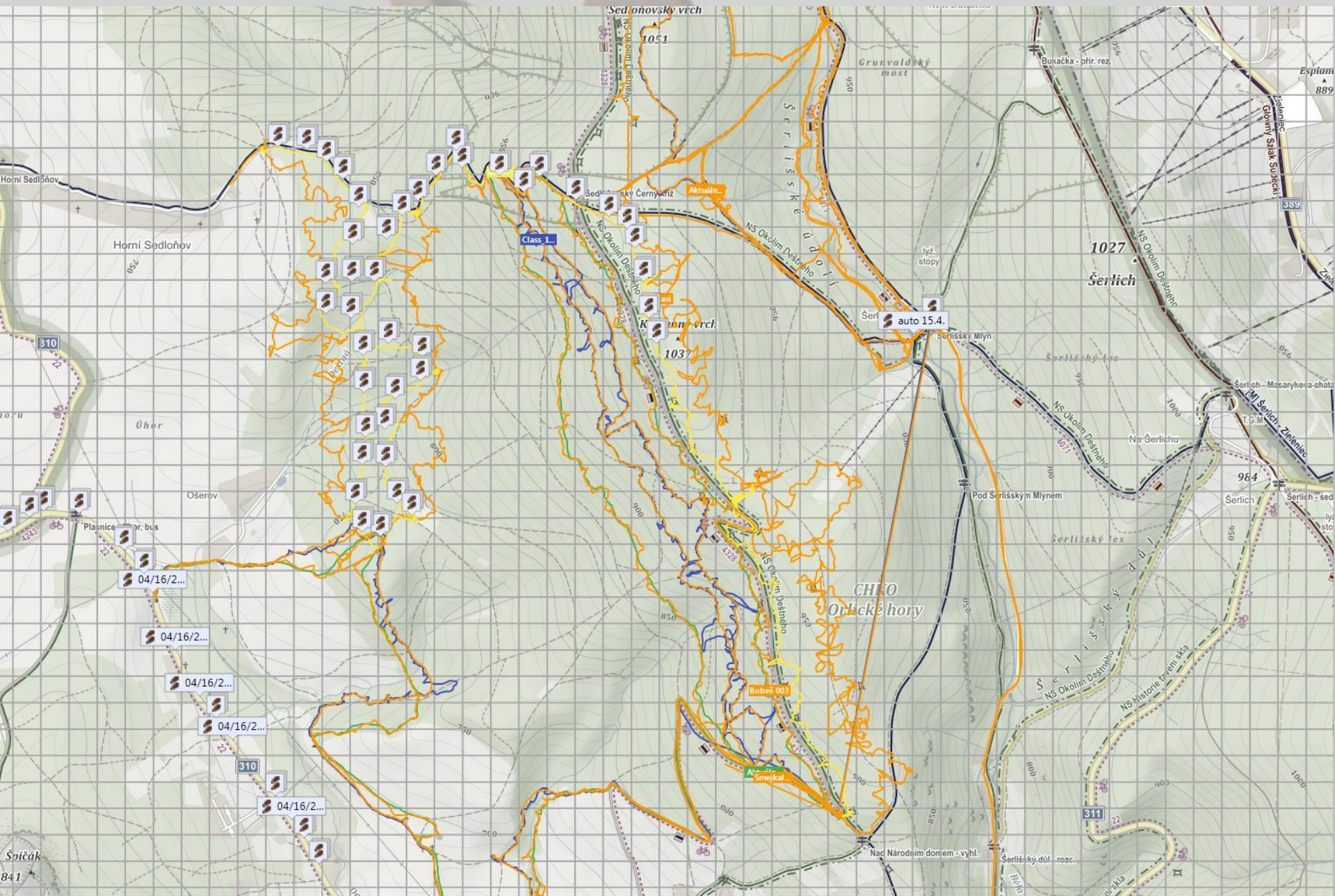
- Searching Klara
- Lost 14.4. afternoon
- Her friend call us 15.4. at 11:30 a.m.
- Starting serching at 11:45
- Later specification area Sedloňovský hill

15.4.2017

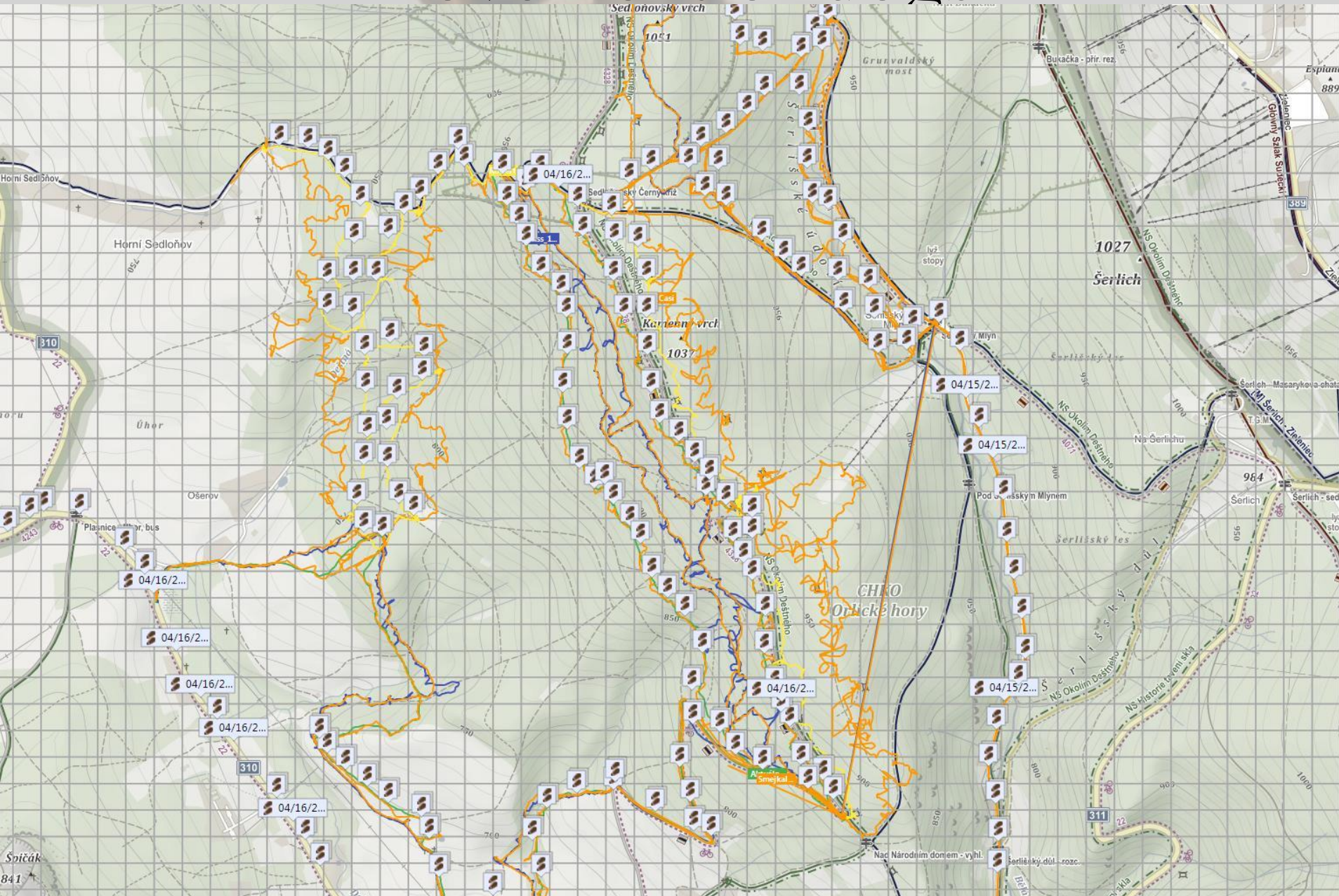


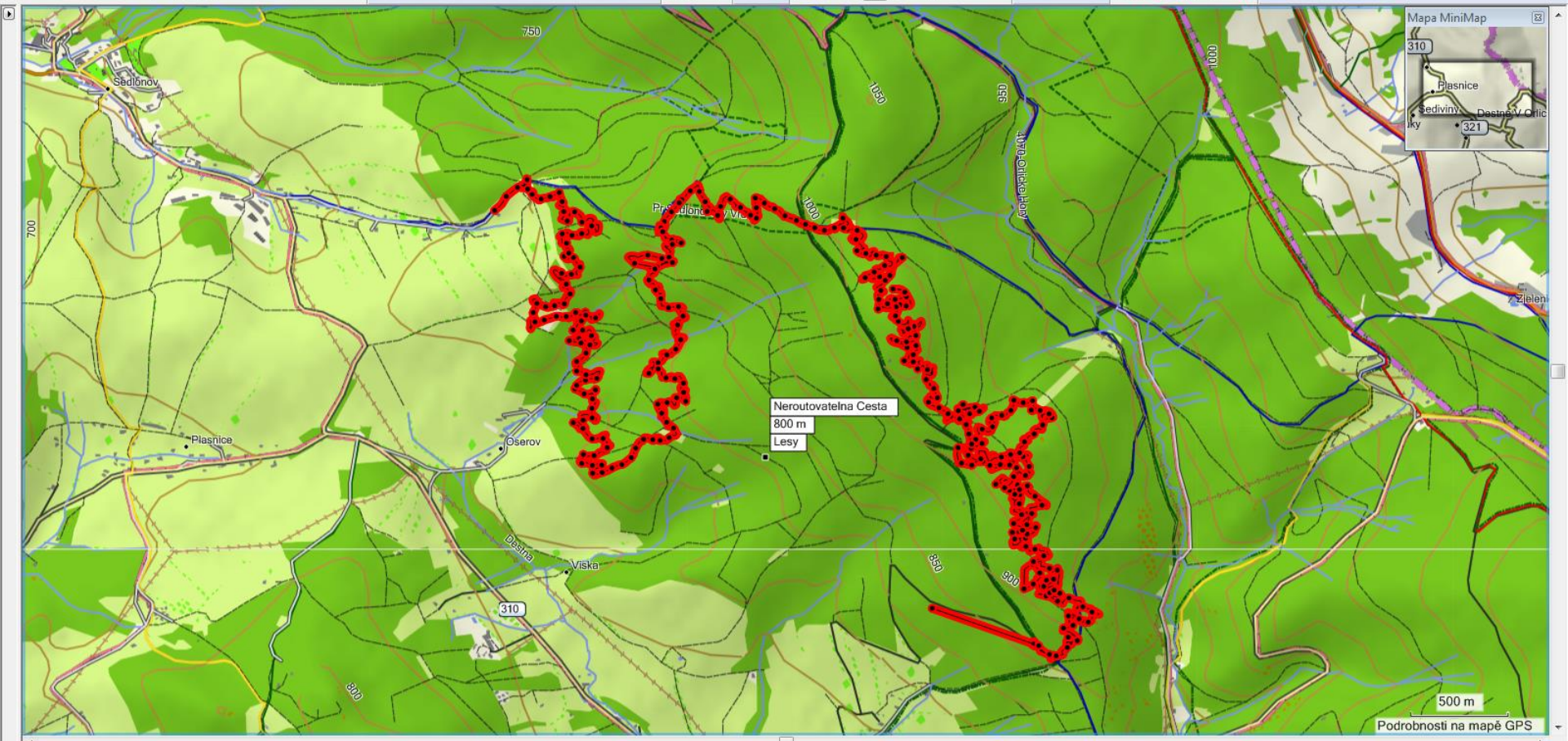
# 16.4.2017

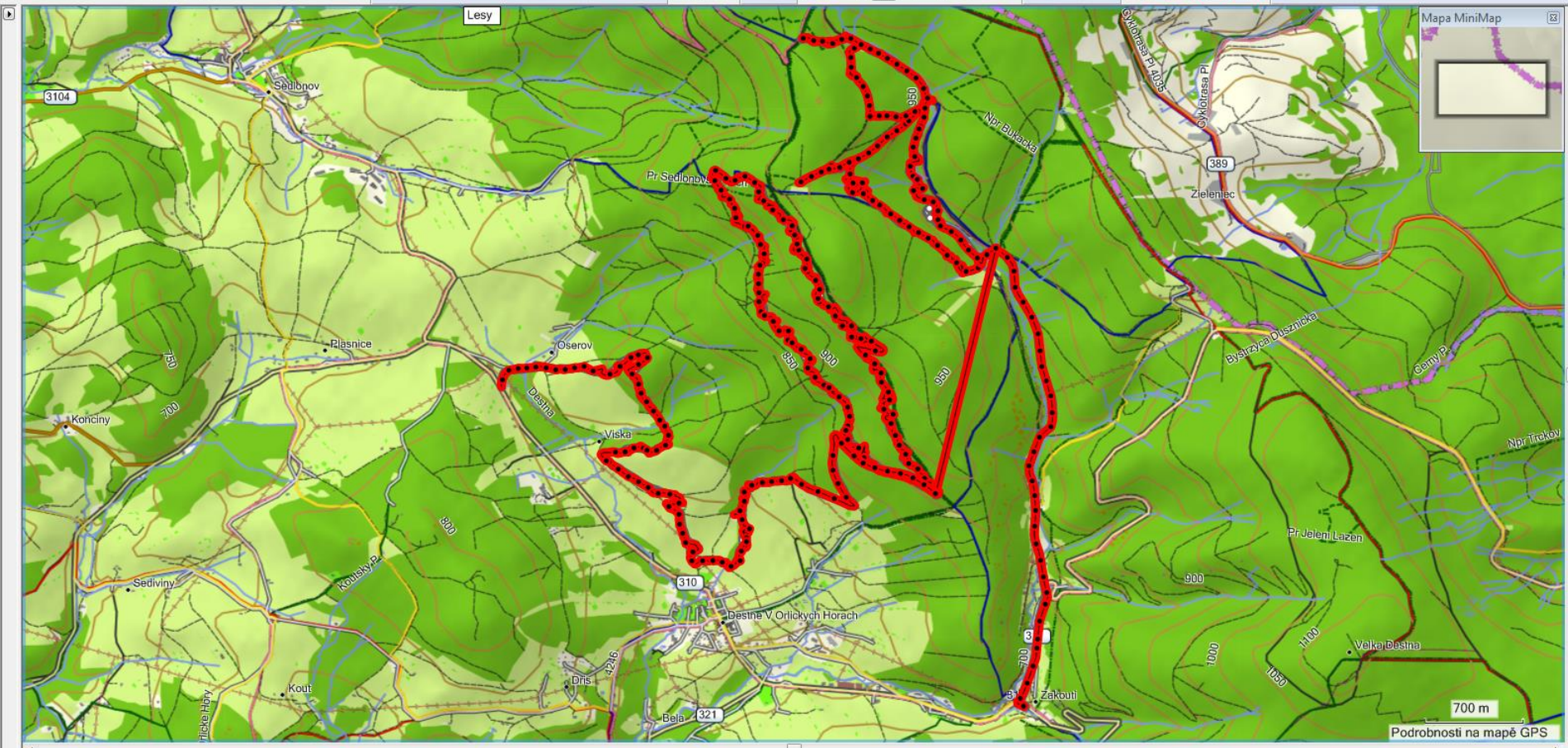


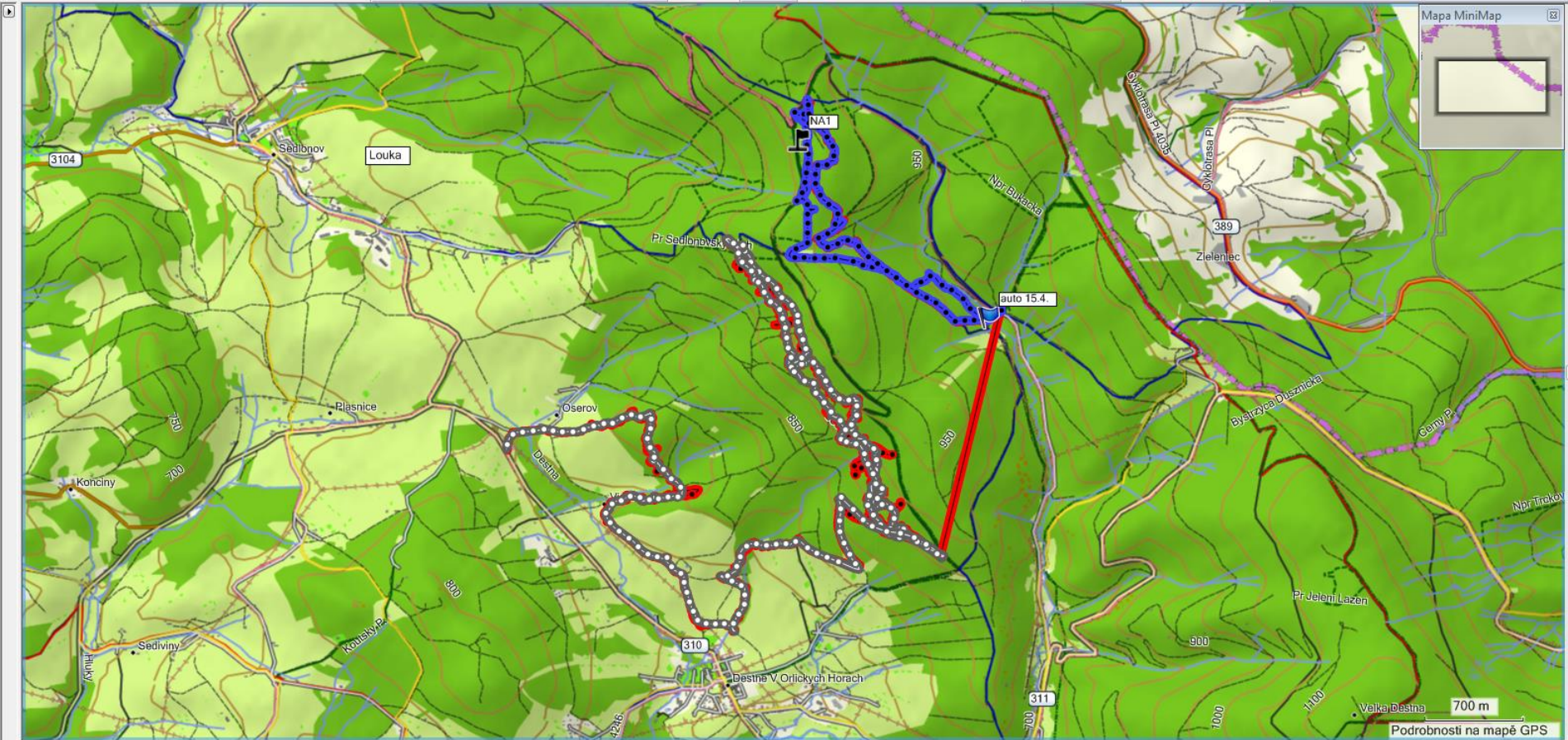


# movement of dogs





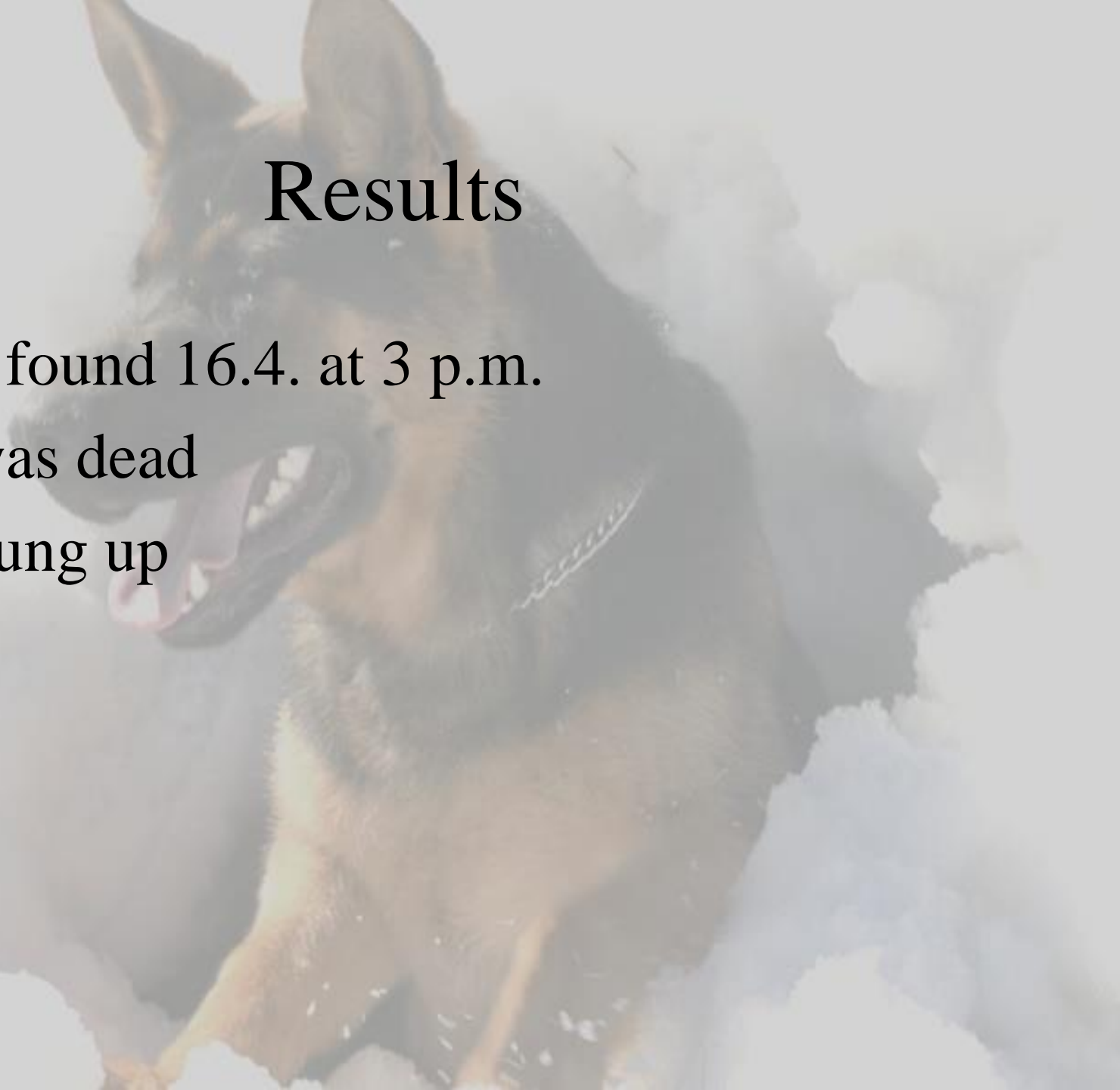






# Results

- Klara found 16.4. at 3 p.m.
- She was dead
- She hung up



Josef Hepnar

[hepnar@hscr.cz](mailto:hepnar@hscr.cz)

