



# Workgroup Incident Command Systems Recommendation

Ásgeir Kristinson ICE-SAR

# Ásgeir Kristinsson



- Member of the Akranes mountain search and rescue team since 1986
- Training:
  - Mountain Rescue
  - Search for missing person
  - Incident Command





SLYSAVARNAFÉLAGIÐ  
LANDSBJÖRG

# Incident Command System or ICS...

## Teamwork

### What is needed?

- Skilled people
- Good training
- High morale
- **Good system**





SLYSAVARNAFÉLAGIÐ  
LANDSBJÖRG

## ICS...

### People with skills for the job...

- At the accident site they...
  - Want to know their role
  - Work with people who understand their role
  - Work as fast as they can
  - Achieve the best results
  - Arrive home safely
- And to do so, a good system helps







SLYSAVARNAFÉLAGID  
LANDSBJÖRG

## During training time...

- Introduce the system
- Understand it
- Implement it
- Exercise it

# ICS...





SLYSAVARNAFÉLAGIÐ  
LANDSBJÖRG

# ICS...

## High morale for what...

- Volunteers
- More quality
- Less stress
- To achieve it helps to have a good system



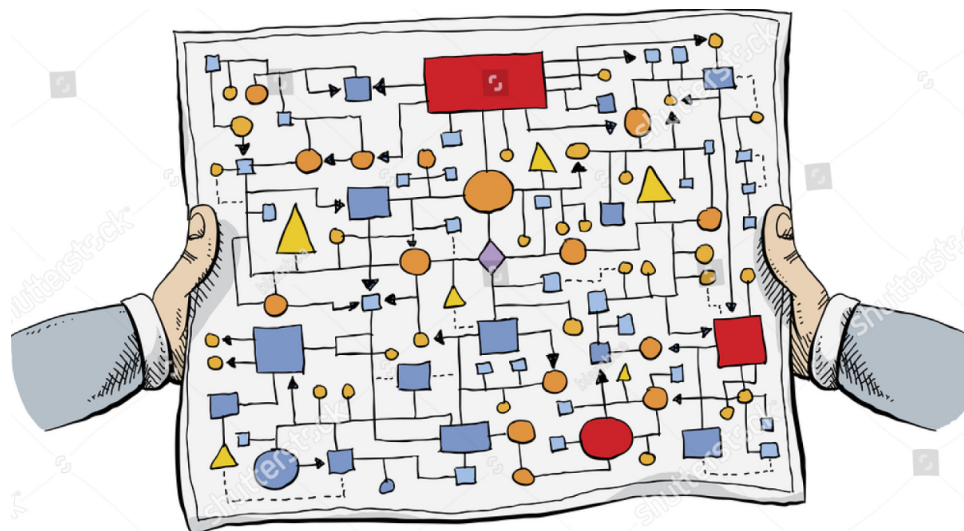


SLYSAVARNAFÉLAGIÐ  
LANDSBJÖRG

## The System

- Simple
- Understandable
- Close to reality
- Best practice
- **Usable**

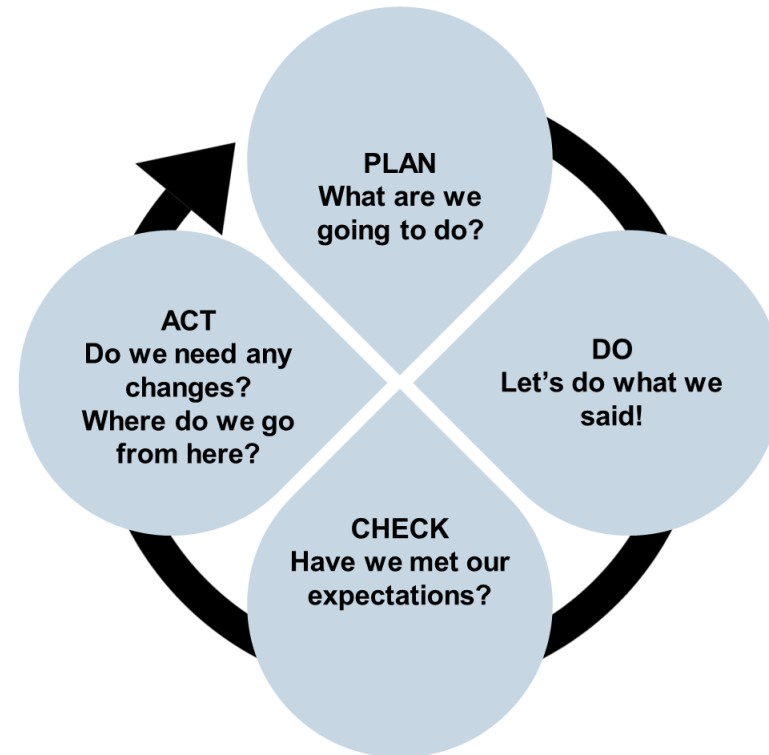
# ICS...





SLYSAVARNAFÉLAGIÐ  
LANDSBJÖRG

# Edward Deming's circle of improvements





# ICS...

## The Recommendation

- Scalable and Modular: Easily supports the incident command team from 1 person to a large group without the need to change the system.
  - *It is very important not to change the system due to rapidly changing incident needs.*



SLYSAVARNAFÉLAGIÐ  
LANDSBJÖRG

## ICS... The Recommendation

- Usable for small scale local incidents to a large disaster stretching between communities or countries without the need to change the system.
  - *As features expand, it is important that everyone understands the system and can merge directly into the system.*



# ICS...

## The recommendation

- Standardized structure and terms.
  - *That everyone is familiar with and trained in.*



# ICS...

## The recommendation

- Workable in all environments
  - *On land, at sea, in air.*
- Just one system





# ICS...

## The Recommendation

- Integrated into national incident command systems
  - *The system must at least be able to talk to other systems, but preferably be similar or the same as other ICS used in the country.*



SLYSAVARNAFÉLAGIÐ  
LANDSBJÖRG

# ICS...

## The Recommendation

- **Integrated Communications:**  
Able to allow timely transmission of data and personal information under the laws of each country.



## Glossary

### Incident

- An expected or unexpected occurrence that needs a response from one or more agencies. It may or may not be an emergency.



SLYSAVARNAFÉLAGIÐ  
LANDSBJÖRG



SLYSAVARNAFÉLAGIÐ  
LANDSBJÖRG

# Command

- Command operates vertically within an agency. It describes the internal ownership, administrative responsibility, and detailed direction of an agency's personnel and resources. Command cannot normally be exercised outside of an agency without a clear delegation of authority.



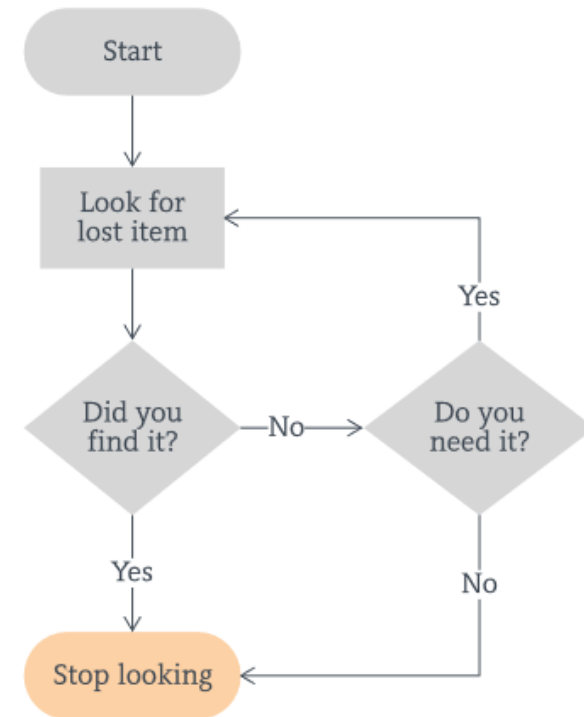




SLYSAVARNAFÉLAGIÐ  
LANDSBJÖRG

# System

- Structure used to organize the incident



# Team

- A group of rescue persons working for the same goal on a callout



# Standardized



SLYSAVARNAFÉLAGIÐ  
LANDSBJÖRG

- The same word for structures and terms.

Standardized  
Work  
Introduction



Without Standardization



Chaos situation



What should we do??

With Standardization



You can see where the problem is

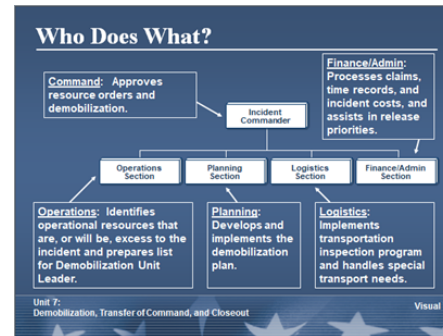


# Scalable

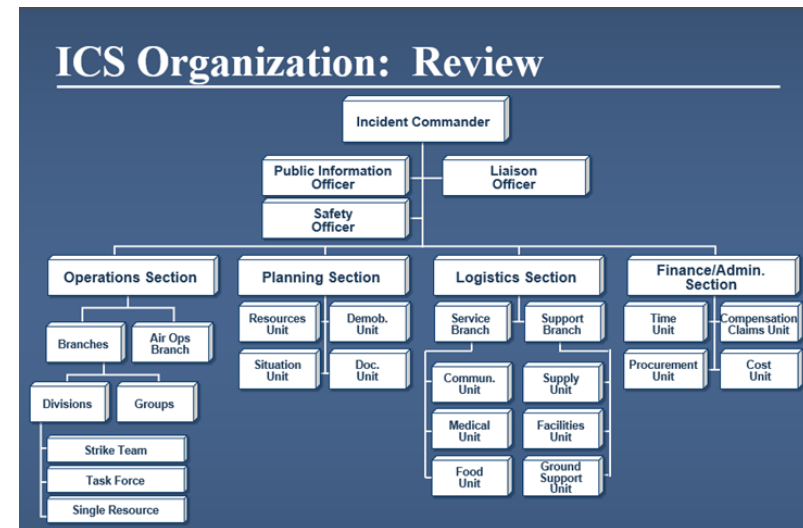
- One person to multiple jurisdictions.



# Modular



- Expandable to different system components based on the needs of the incident.





## Next Steps

- Define what is needed in the system
- How far will we go in the next recommendation
- We need to look at some challenges
  - Registering and logging
  - Share information
  - Define key positions



SLYSAVARNAFÉLAGIÐ  
LANDSBJÖRG

## From You...

- If this system is going to be usable, we need your involvement :
  - Your good ideas
  - Point out problems that could delay the project
  - Compare the recommended ICS to previous actions



SLYSAVARNAFÉLAGIÐ  
LANDSBJÖRG



SLYSAVARNAFÉLAGIÐ  
LANDSBJÖRG

## As the man once said...

- Please don't die with a perfect plan...
- Every plan is perfect when it is published, but “No plan survives first contact with the enemy“
- Flexibility is the Key!





SLYSAVARNAFÉLAGIÐ  
LANDSBJÖRG

**Ásgeir Kristinsson**

**[asgeir.kristinss@gmail.com](mailto:asgeir.kristinss@gmail.com)**

**Instagram: kristinssonasgeir**

