

A national guideline for terrestrial search methods

Development and implementation



Norwegian People's Aid





Nasjonalt Redningsfaglig Råd



Lokal kompetanse – lokal trygghet



Norwegian People's Aid



Norwegian People's Aid



- Population: 5 200 000
- North-South: 1752 km





Norwegian People's Aid

Organization

- Government agencies
- Volunteer organizations
- Professional, specialized units (330)



Norwegian People's Aid



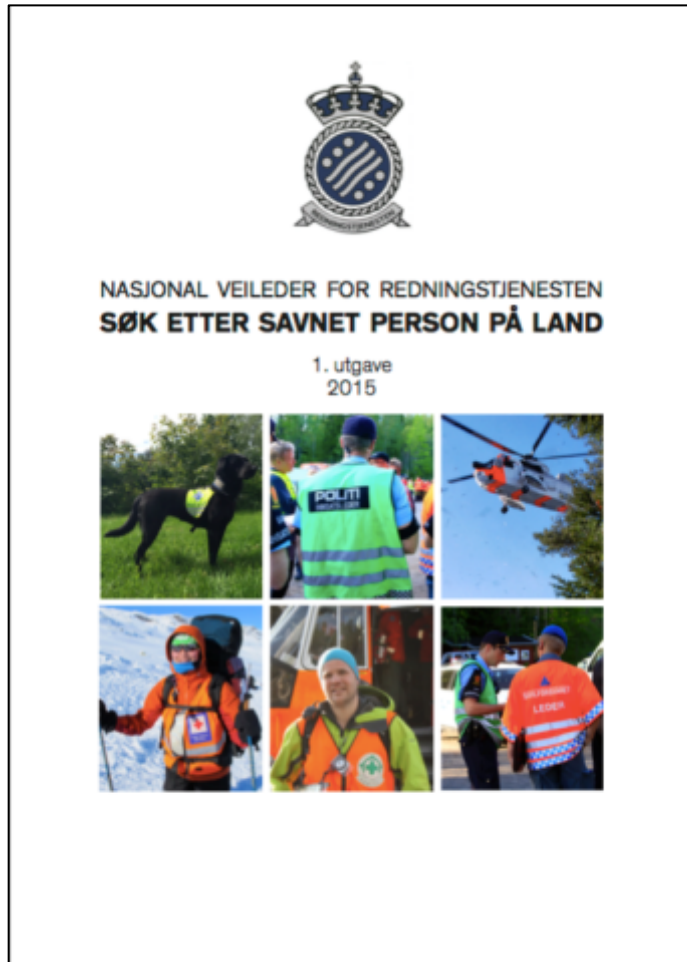


Norwegian People's Aid

How?



Result



Information

Important information we wanted to highlight

Warning

Information we wanted to emphasize because of repeated and serious errors

Danger

Critically important to avoid loss of life



Standardization of routines for alarming all available resources

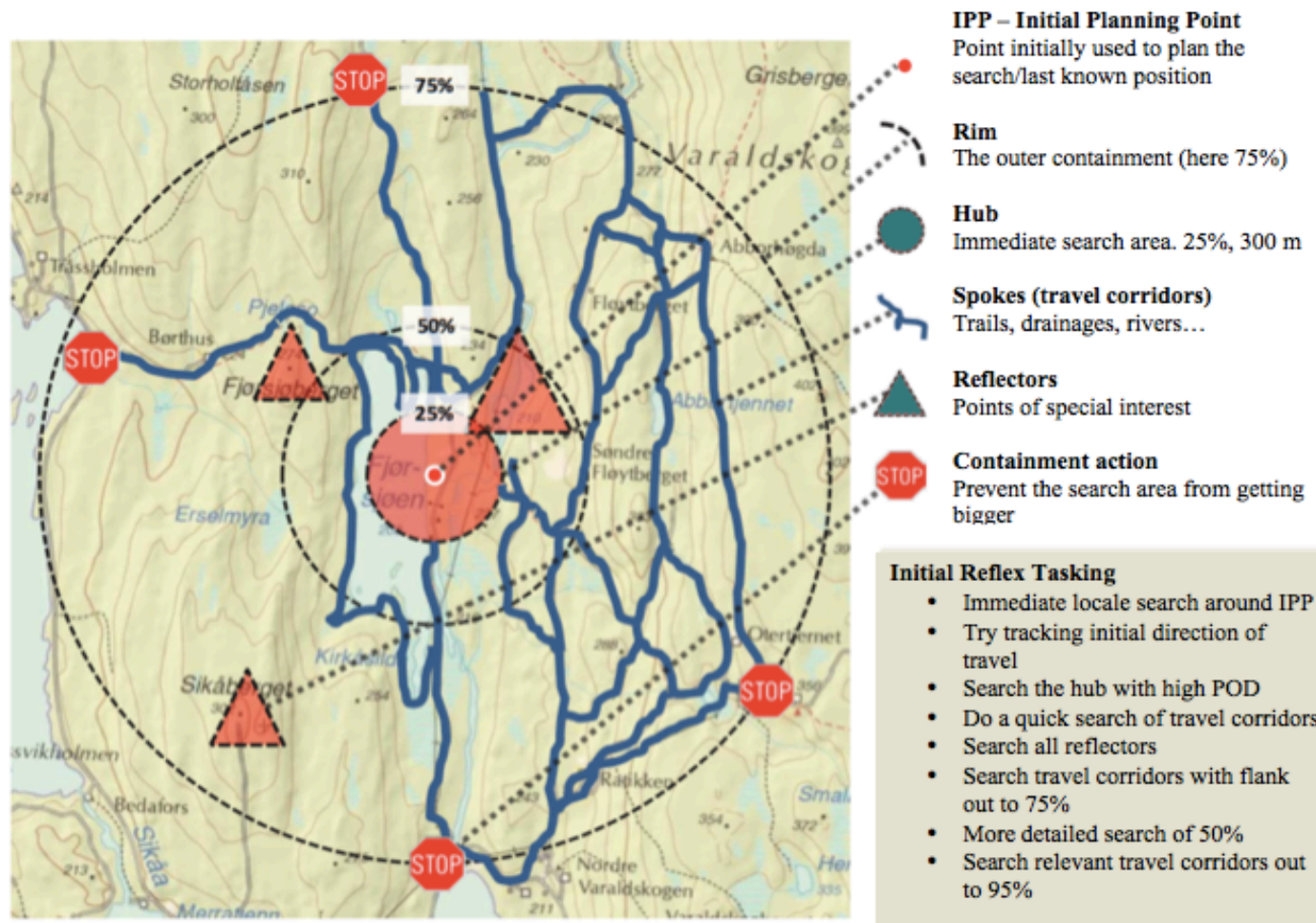


Warning

Only utilizing one rescue resource weakens the quality of the operation. Different resources have different capacities and complements each other. When an air resource is used, there should always be field resources as well.



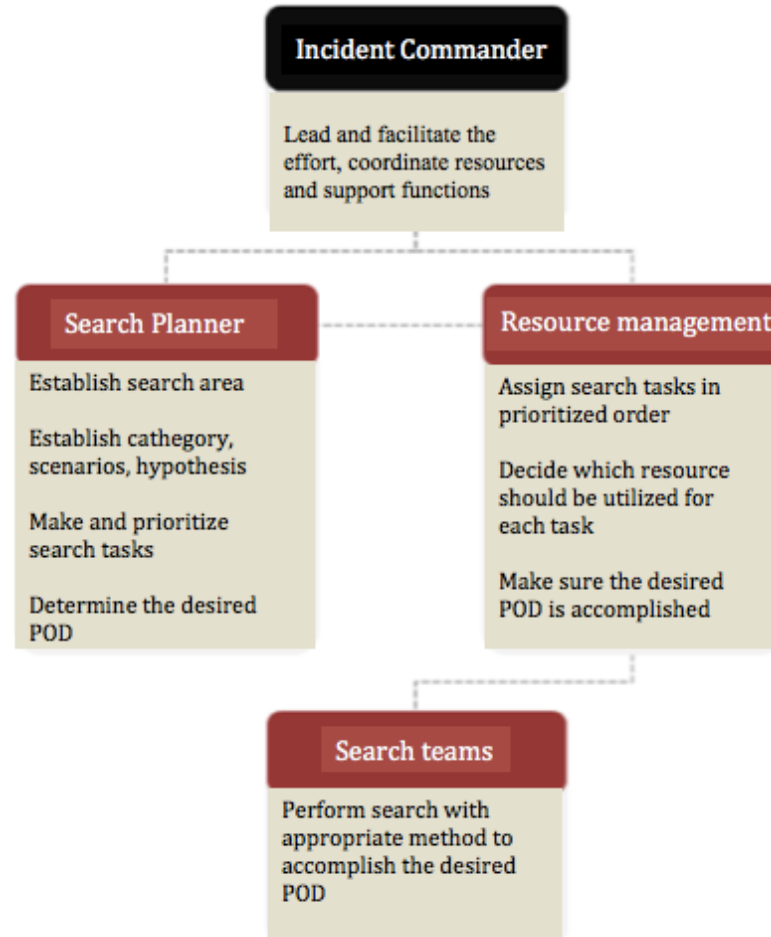
Establishing a standard method for the initial search effort



Provide a common description of the different established search methods



Establish a standard model for operational leadership in a search



Warning

Initially in an operation there is a great risk of having rescuers waiting for assignments. This leads to loss of valuable search-time, which is especially critical when time in daylight is scarce. Leaders should strive to immediately put all resources in active search. In this phase effective leadership is extremely important.



Create a common understanding and standard for the terms used during an operation

POD

POA

LKP

Travel corridors

Search task

NVG

Search area

POI

IPP

Subject Category



Implementation



Does the National Guideline result in a better search and rescue service?

- Standardization of routines for alarming all available resources
- Establishing a standard method for the initial search effort
- Provide a common description of the different established search methods
- Establish a standard model for operational leadership in a search
- Create a common understanding and standard for the terms used during an operation

→ Does indeed improve the search before the rescue.



”The more routine decisions Incident Commanders make before the incident, the more time they will have to make critical decisions during the incident.”

Chief Alan Brunacini, Phoenix FD

