

# Avalanche accident in Tamok Valley 2019



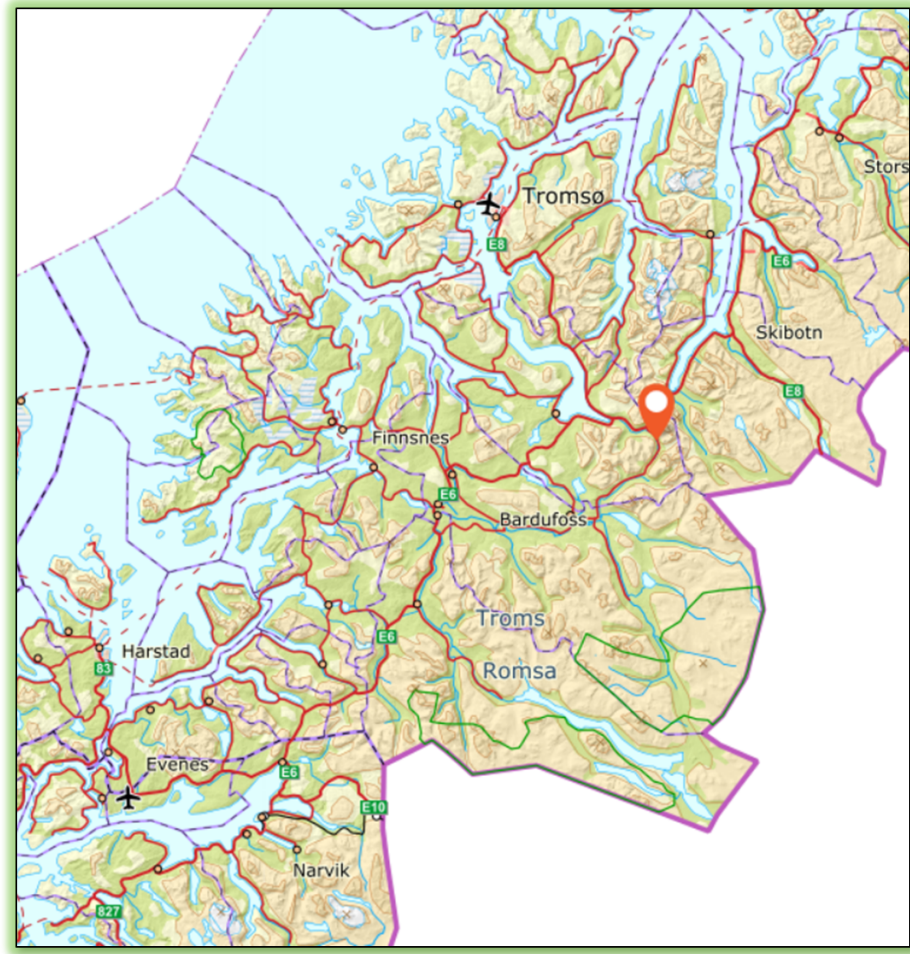
Foto: Rune Stoltz Bertinussen



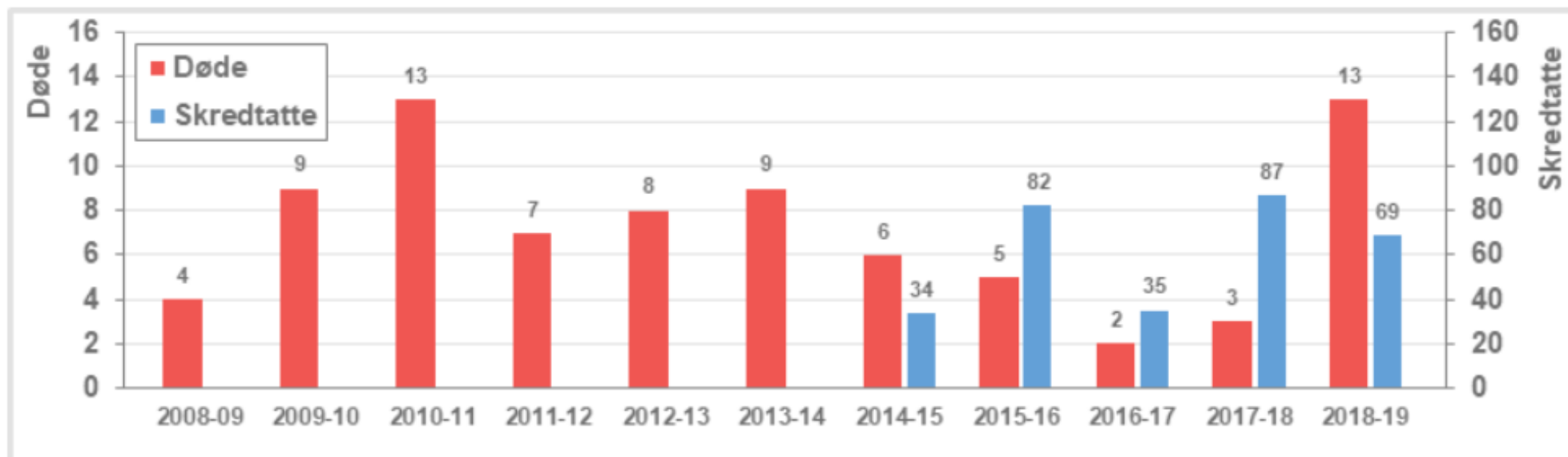
**Norwegian People's Aid**



# Geography



# Avalanche context



- The last five years, 10 out of 21 fatal avalanche accidents in Norway happened in Troms county
- 30 people lost their lives due to avalanche in Troms since 2004



# Norwegian Avalanche Rescue Services



# Weather and snow conditions

2 2 3 3 3 3 3 3 3 3 3 3 3 3 3

23.12 24.12 25.12 26.12 27.12 28.12 29.12 30.12 31.12 01.01 02.01 03.01 04.01

3  
Considerab

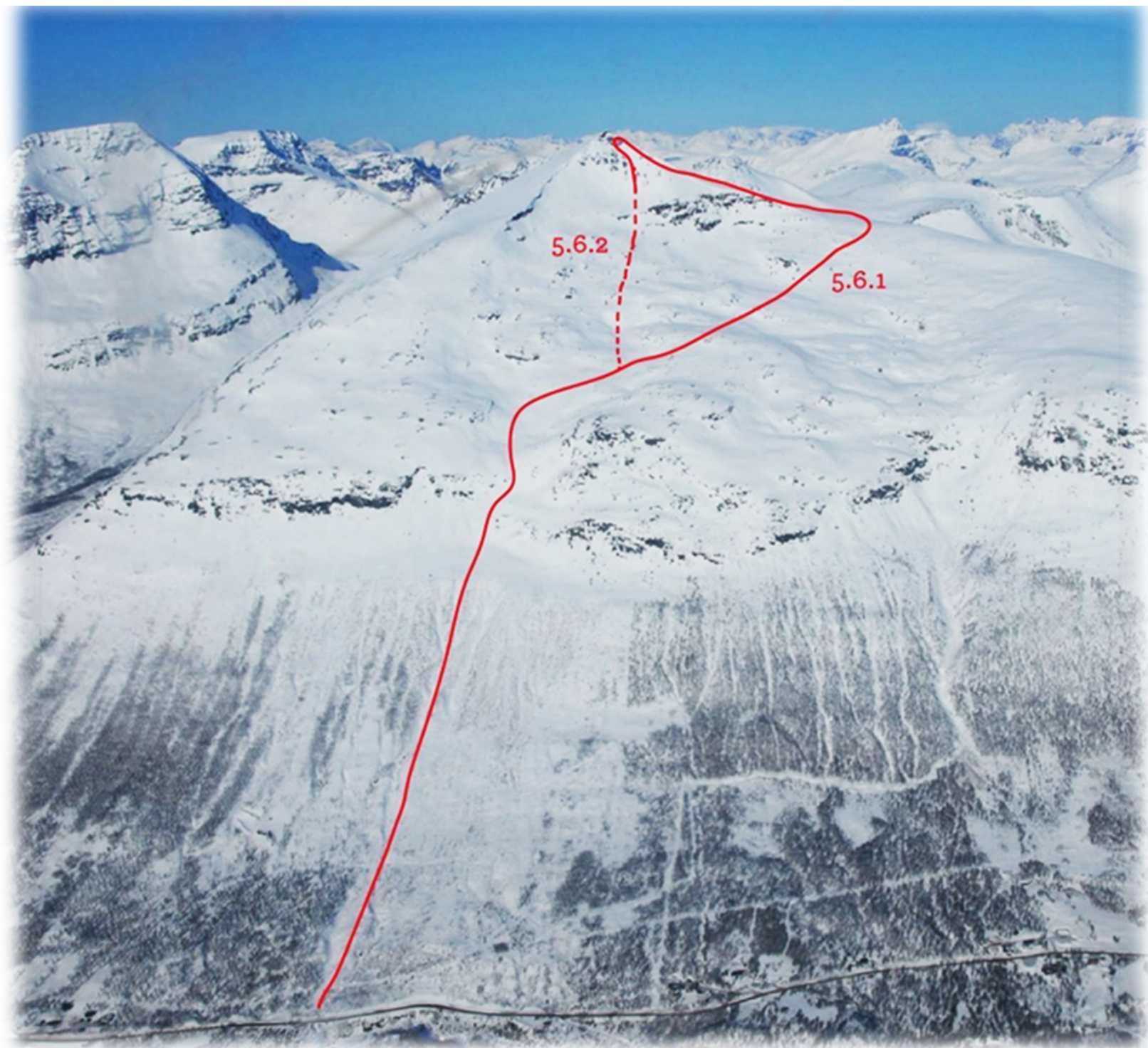
Published: 2019-01-01 03:22 PM

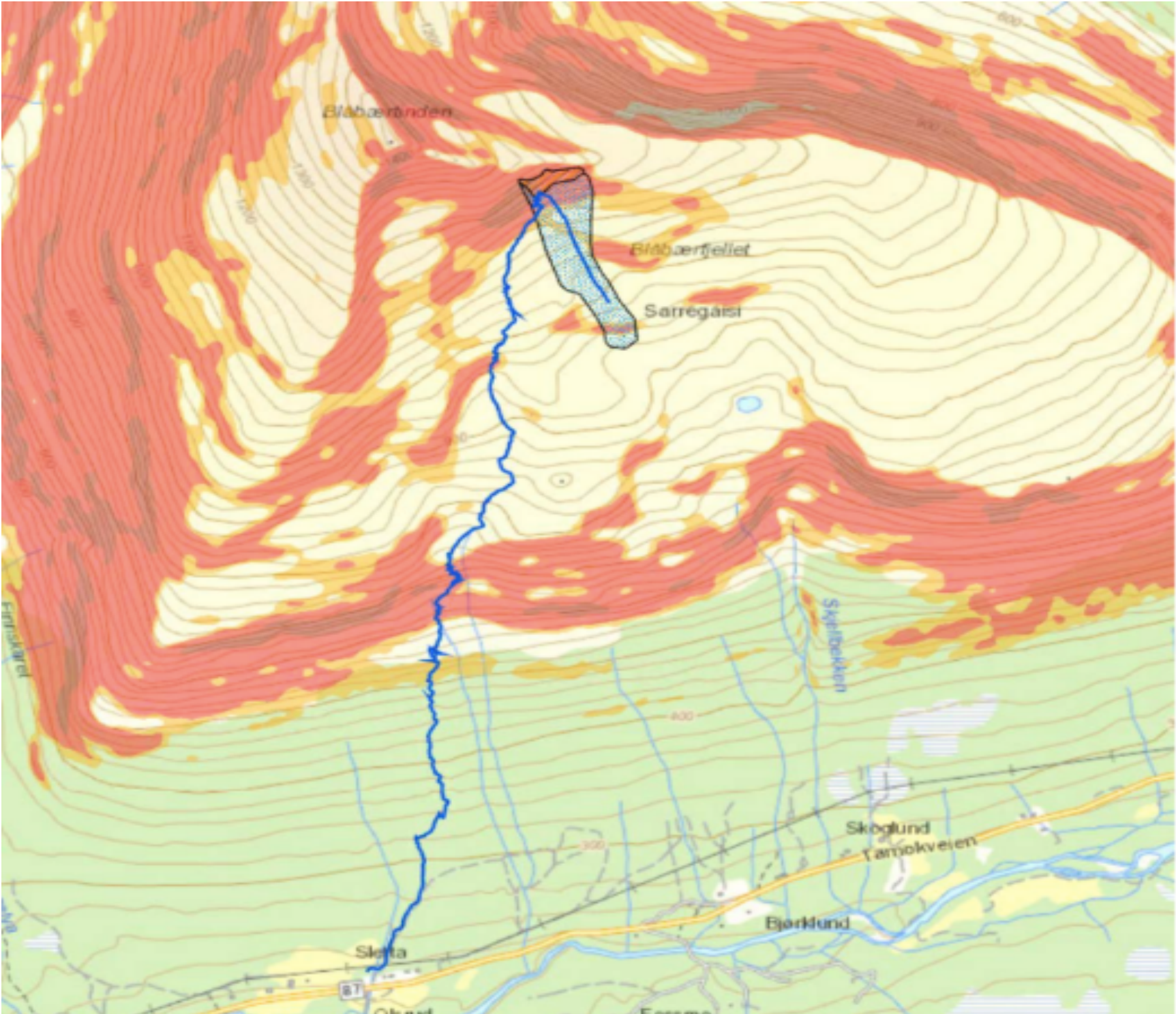
Be careful in lee areas with wind deposited snow, typically behind ridges, ribs and in gullies. Persistent weak layers may be present in the snow cover, these are easiest to trigger where the snow cover is thin.

**Avalanche size:** 3 - Large  
**Trigger/release:** Low additional load  
**Distribution:** Specific steep slopes  
**Probability:** Possible

**Avalanche size:** 3 - Large  
**Trigger/release:** High additional load  
**Distribution:** Isolated steep slopes  
**Probability:** Possible



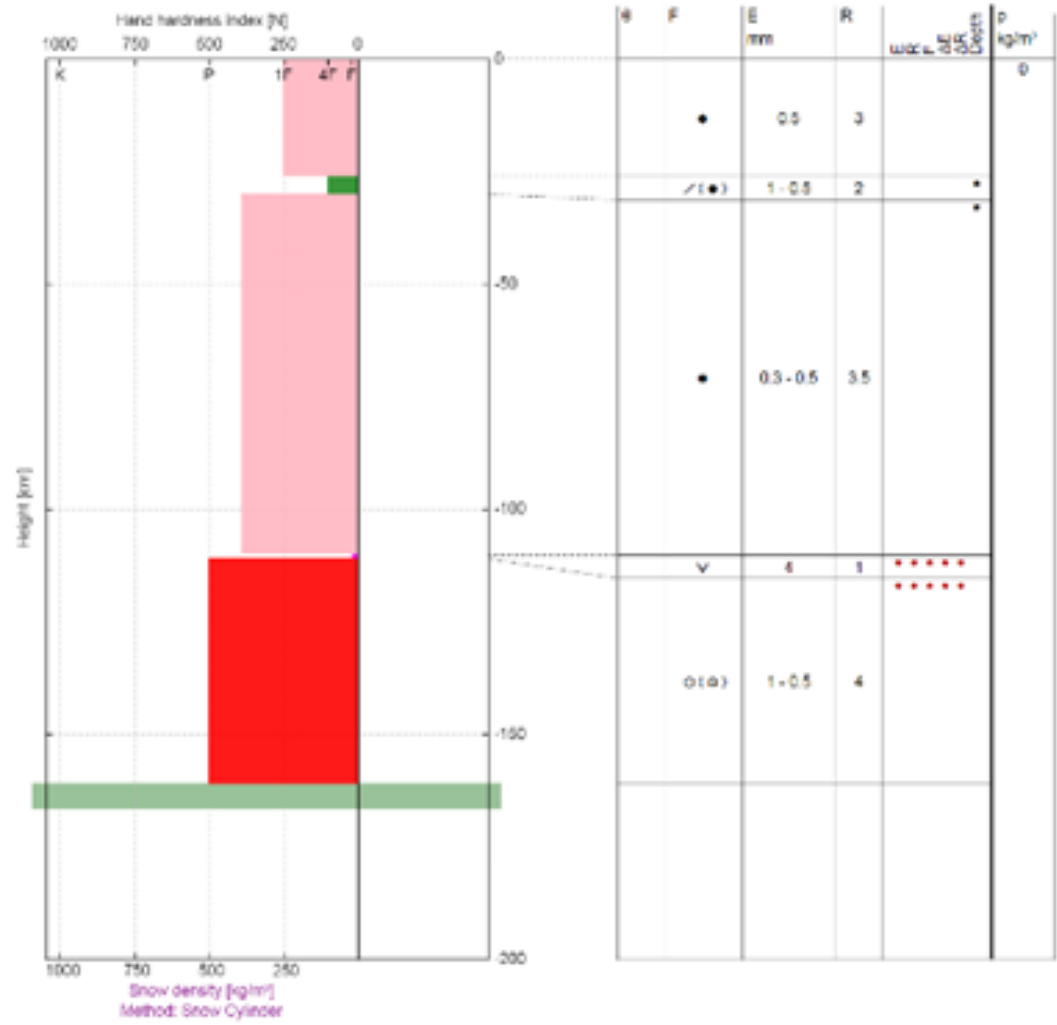




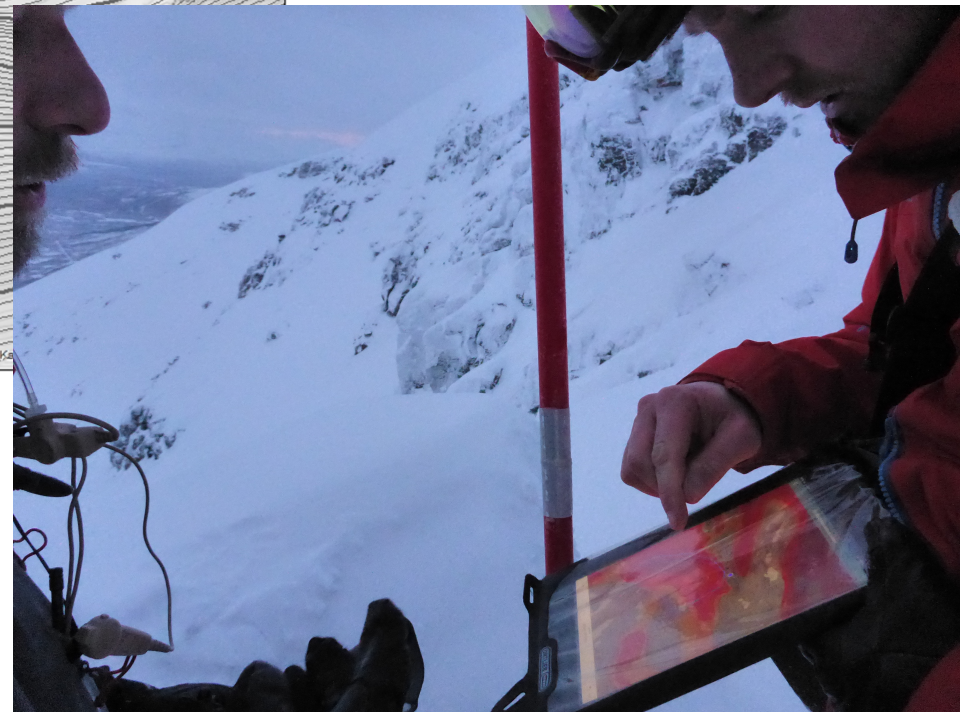
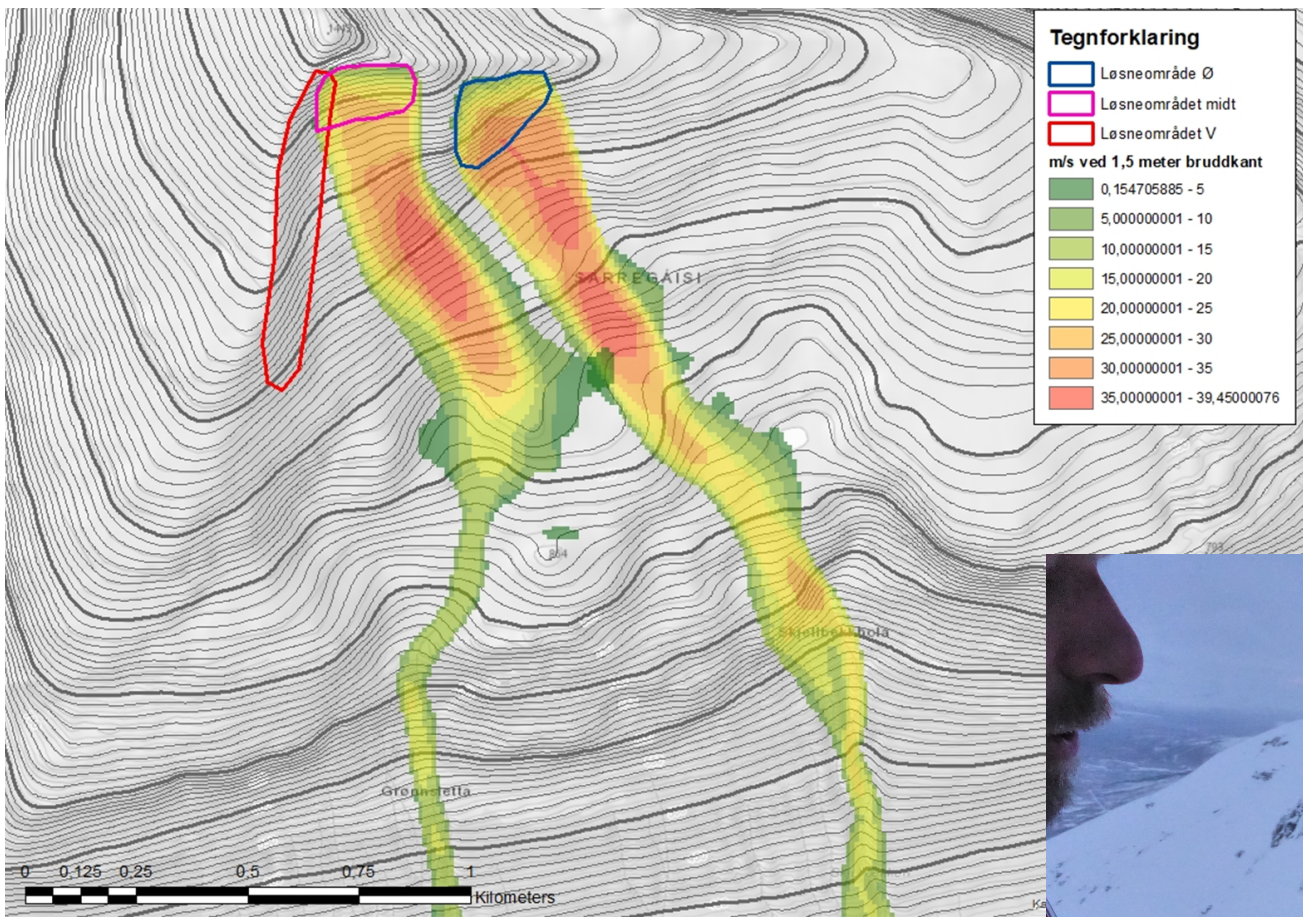










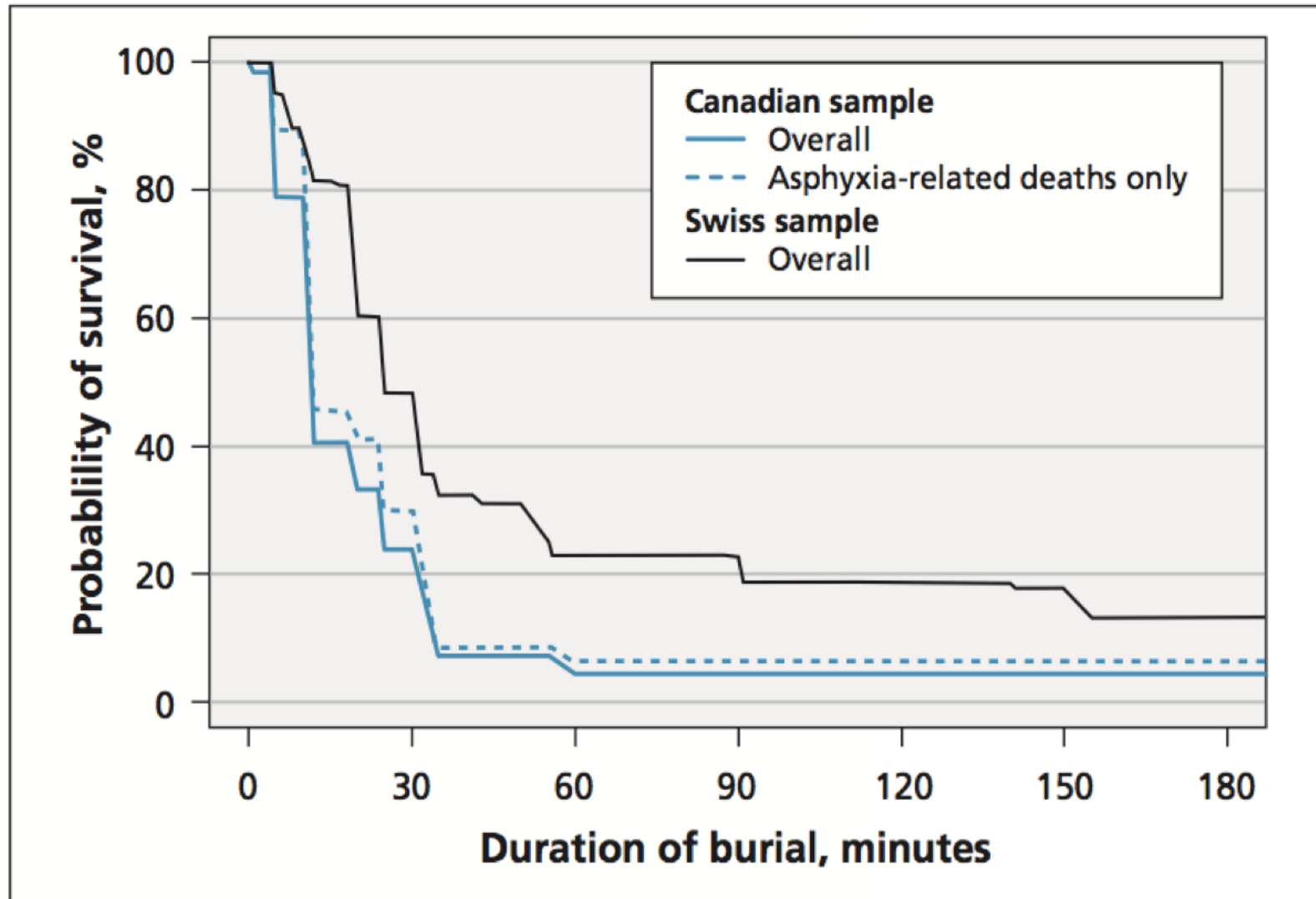












**Figure 1:**

Overall survival curves for people completely buried in avalanches in Canada ( $n = 301$ ) and Switzerland ( $n = 946$ ) from Oct. 1, 1980, to Sept. 30, 2005, by duration of burial (Dömbgen comparison:  $p = 0.001$ ). The dotted line represents the Canadian survival curve including only asphyxia-related deaths ( $n = 255$ ).



