

Rescue out of the Riesending Cave

View into Operations Control

Nik Klever
Vice-Chairman Bergwacht Bayern



Untersberg in the Berchtesgaden Alps

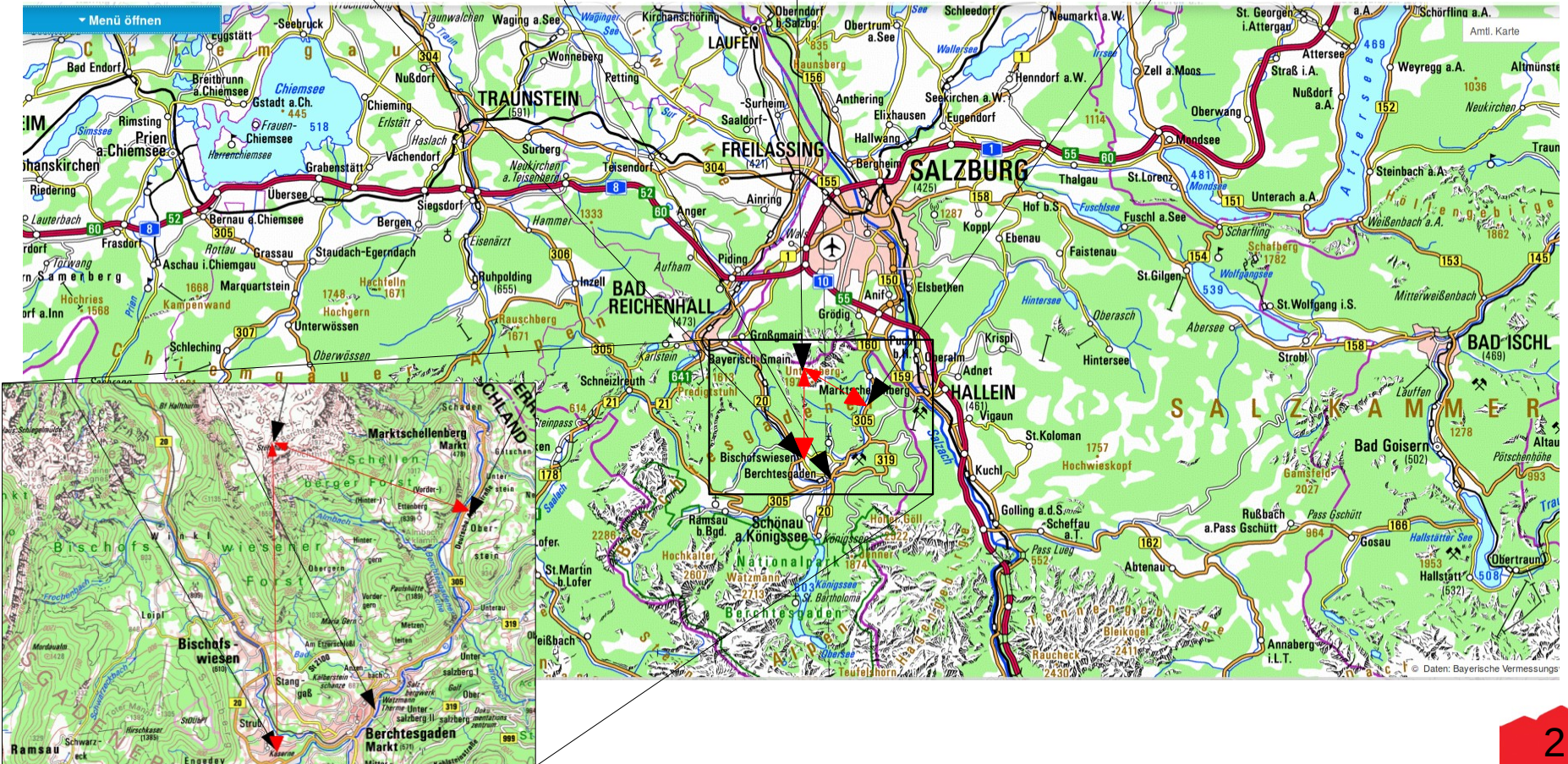


Strub Barracks

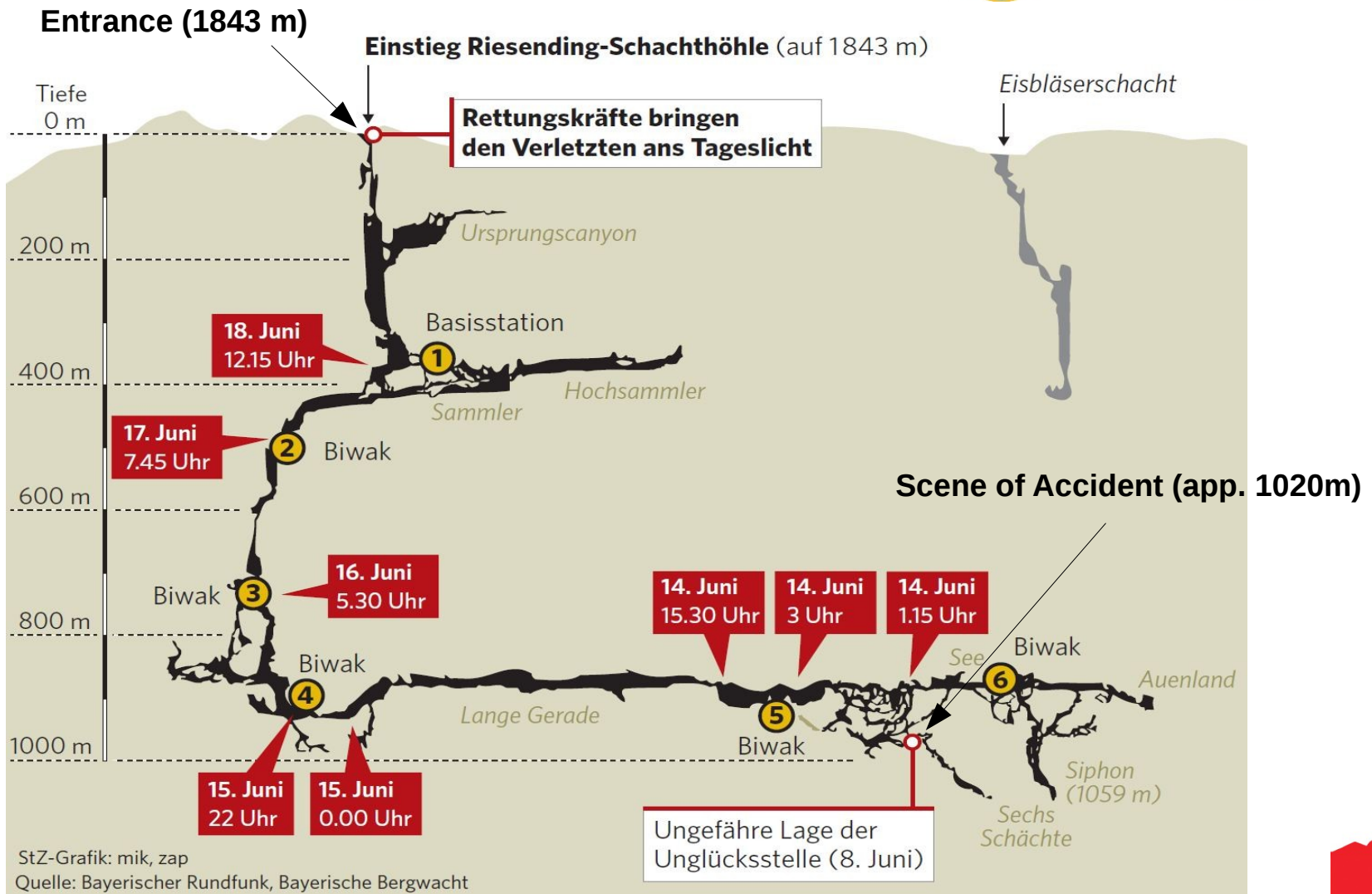
Fire Station

Riesending Entrance

First Control on a Greenfield



Cave Rescue Operation „Riesending“



Duration of the Rescue Operation



Sunday, June 8., 2014 at 01:30 accident and climb of the fellow from the scene of the accident up to mountain hut „Störhaus“

Sunday, June 8., 2014 at 14:28 incoming emergency call at rescue control centre Rosenheim and Traunstein

Thursday, June 19., 2014 at 12:19 patient is in the helicopter on the way to the hospital

11 days – 10 hours – 49 minutes

Operations Control Group

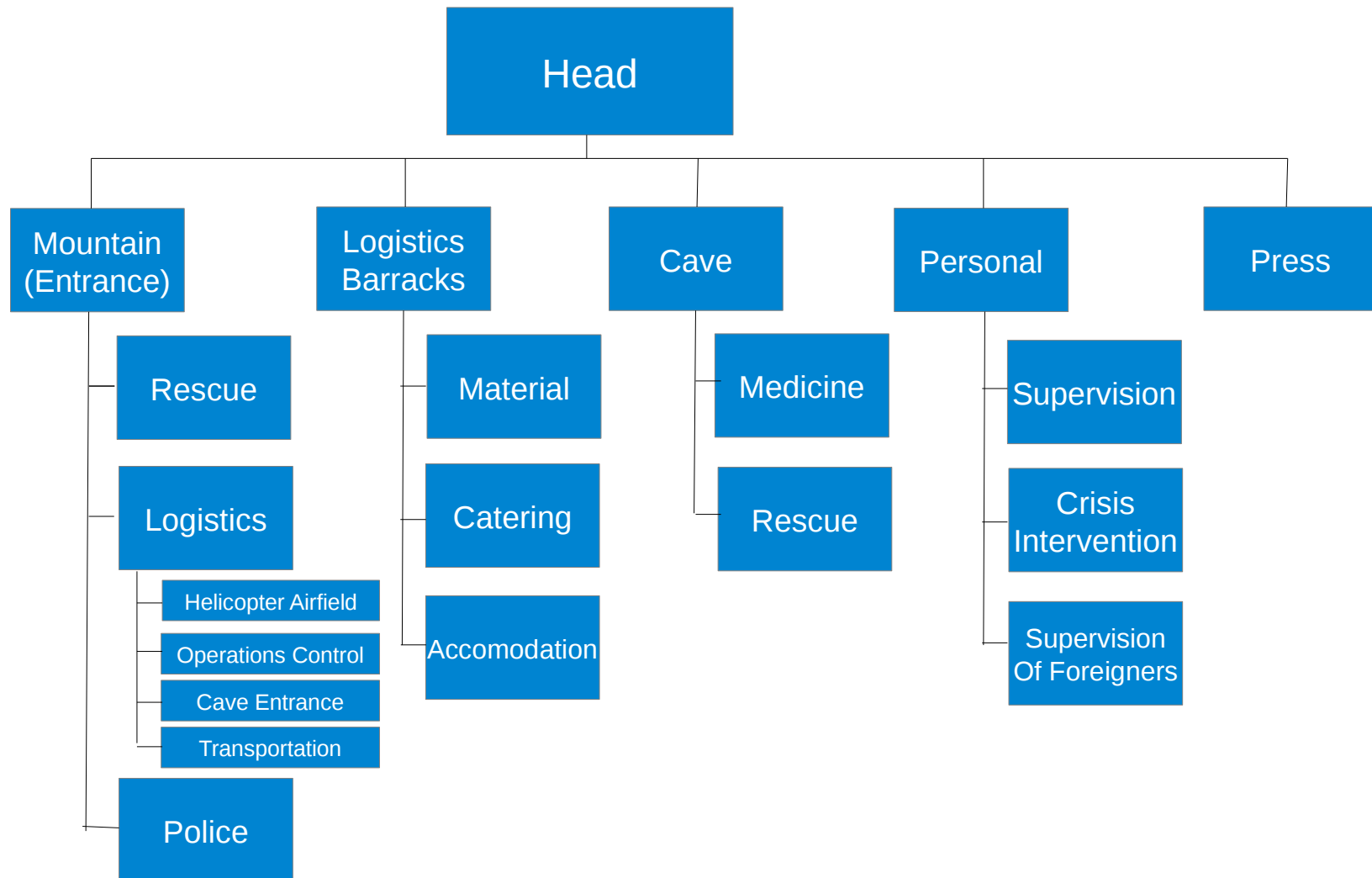








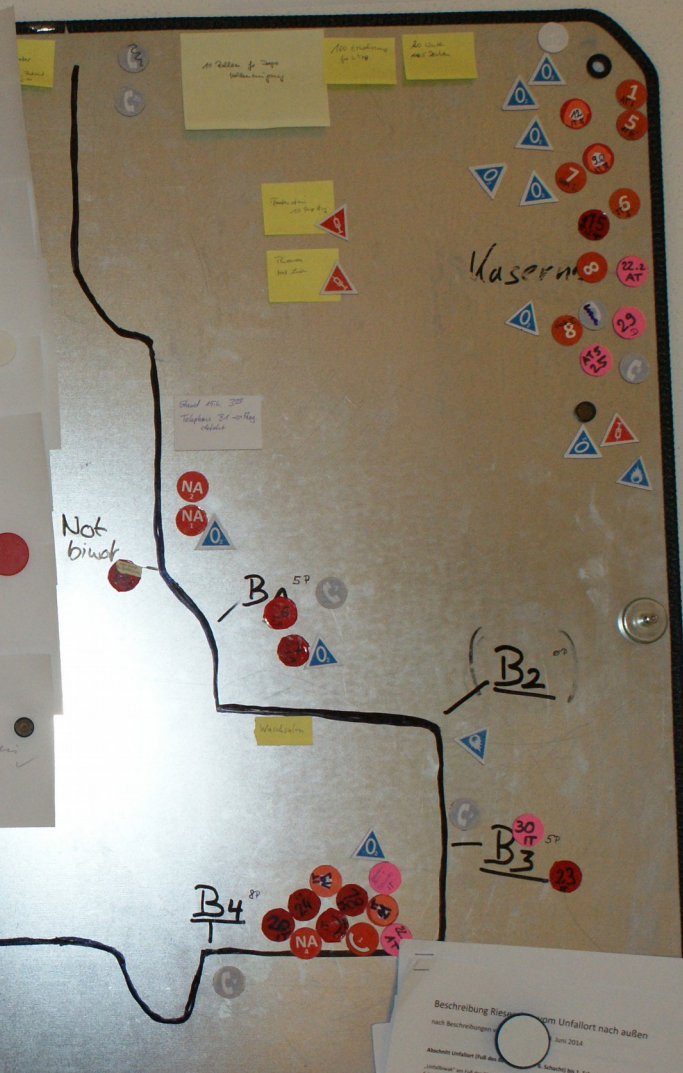
Organigram of the Operations Control Group





23:19 Von Bismarck 4:
Geplanter Ausstiegzeitpunkt von Dr. M.
Thomas vom B4 wird in ca. 5-6 h sein.

03:06
16.06.2014

Thema
Cavalink



Communication









CAVE - LINK

Hauptmenü V
Nachrichten
Einstellungen
Abmelden

GSM-Modem
AV11
SN: 25









Transportation Logistics















Material Logistics







Logistics because of Medical Care





Logistics because of Weather









Logistics at the Cave Entrance









Press and Media Interest



- We recognized from the beginning that the public has a great interest in this rescue operation and therefore we informed offensively. In the 12 days we have sent

23 Press Releases

and held a press conference nearly every day and in the last week

up to 3 press conferences

every day.

- At last we installed an accreditation for the press and set up a SMS distribution to all accredited media representatives, to keep them informed rapidly.
- For security reasons we ordered a professional mountaineering film team for the last steps of coming out of the cave and offered this material to all media representatives.



PRESSE













gaden



Local Cooperation



Helicopters

We had helicopter support from the helicopter squadrons of the federal and state police, the German Federal Armed Forces and to bridge a gap also from Austrian flying police.

Accommodation and Catering

The accommodation of all rescue team members took place in the Strub barracks of the German Federal Armed Force, the catering was done by the German Army, the Bavarian Red Cross and by the Malteser.

Operational Control

The operational control was carried out at the fire station Berchtesgaden, which we were able to fully use these 12 days. The colleagues of firefighters gave us an outstanding support and provided us also with the vehicle hall for press conferences.









International Cooperation

202 Rescue Team Members in the Cave



- Bergwacht Bayern (Bavaria) 27 cave rescuers
- Österreichische Höhlenrettung (Austria) 42 cave rescuers
- Speleo-Secours Schweiz (Switzerland) 24 cave rescuers
- Corpo Nazionale Soccorso Alpino e Speleologico (Italy) 89 cave rescuers
- Hrvatska Gorska Služba Spašavanja (Croatia) 20 cave rescuers

641 Rescue Team Members of Mountain and Cave Rescue



- | | |
|--|-------------|
| • Bergwacht Bayern (Bavaria) | 404 members |
| • Österreichische Höhlenrettung (Austria) | 60 members |
| • Speleo-Secours Schweiz (Switzerland) | 28 members |
| • Corpo Nazionale Soccorso Alpino e Speleologico (Italy) | 115 members |
| • Bergrettungsdienst im Alpenverein Südtirol (Italy) | 8 members |
| • Hrvatska Gorska Služba Spašavanja (Croatia) | 26 members |

+ additional members of

- Fire Brigades,
- Police,
- Army,
- Bavarian Red Cross,
- German Red Cross,
- Malteser,
- and others

A close-up, rear view of a person wearing a red and blue mountain rescue jacket. The jacket has a red hood and a red back panel with blue sleeves. The text "BERGRETTUNG SOCCORSO ALPINO" is printed in white on the red back panel. A small white circular logo is visible on the blue sleeve.

**BERGRETTUNG
SOCCORSO ALPINO**













Rescue





















Slogan of the Day



Postprocessing with Several Operations on Classification, Clearing and Protection of the Cave











Conclusion



- extreme support from the international rescue teams
- extreme support from local and regional governmental organizations
- victim was very familiar with the extreme environment
- victim was close to a lethal brain injury but not fully
- best wheather conditions
- all decision are taken carefully