

small team leadership decision making in remote areas

Mikael Amlert

Swedish National Police Mountain Rescue

mikael@amlert.se





NATIONAL POLICE MOUNTAIN RESCUE



400 personell / 25 teams

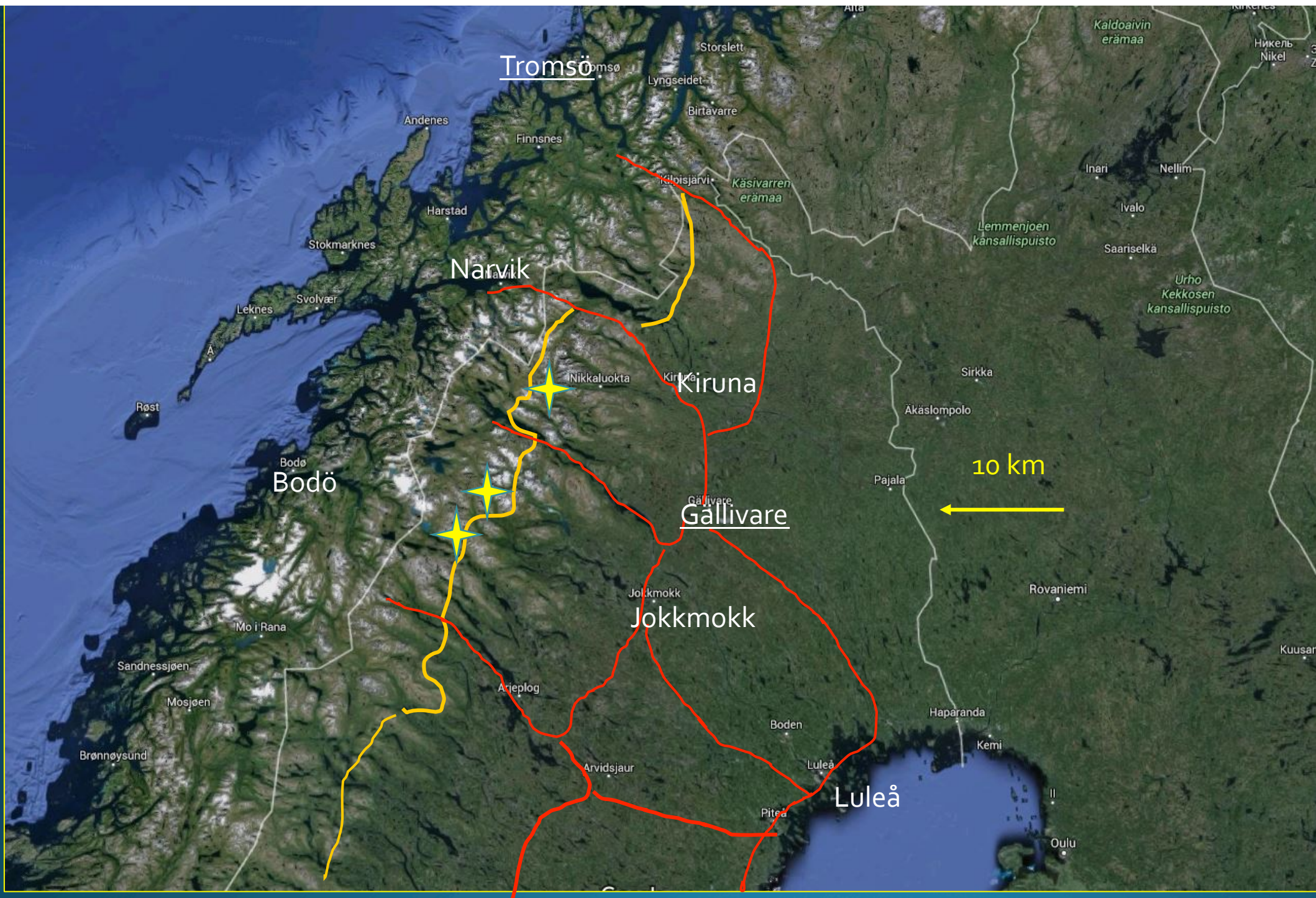


20 personell / 3 teams











Teamleader

Rescue 1

Rescue 2

Rescue 3 (medic)

Personal kit (24hrs)

Kitbag 1-2

Backupkit

Bivouac kit

Mission coordinates

Staging area

Liaison

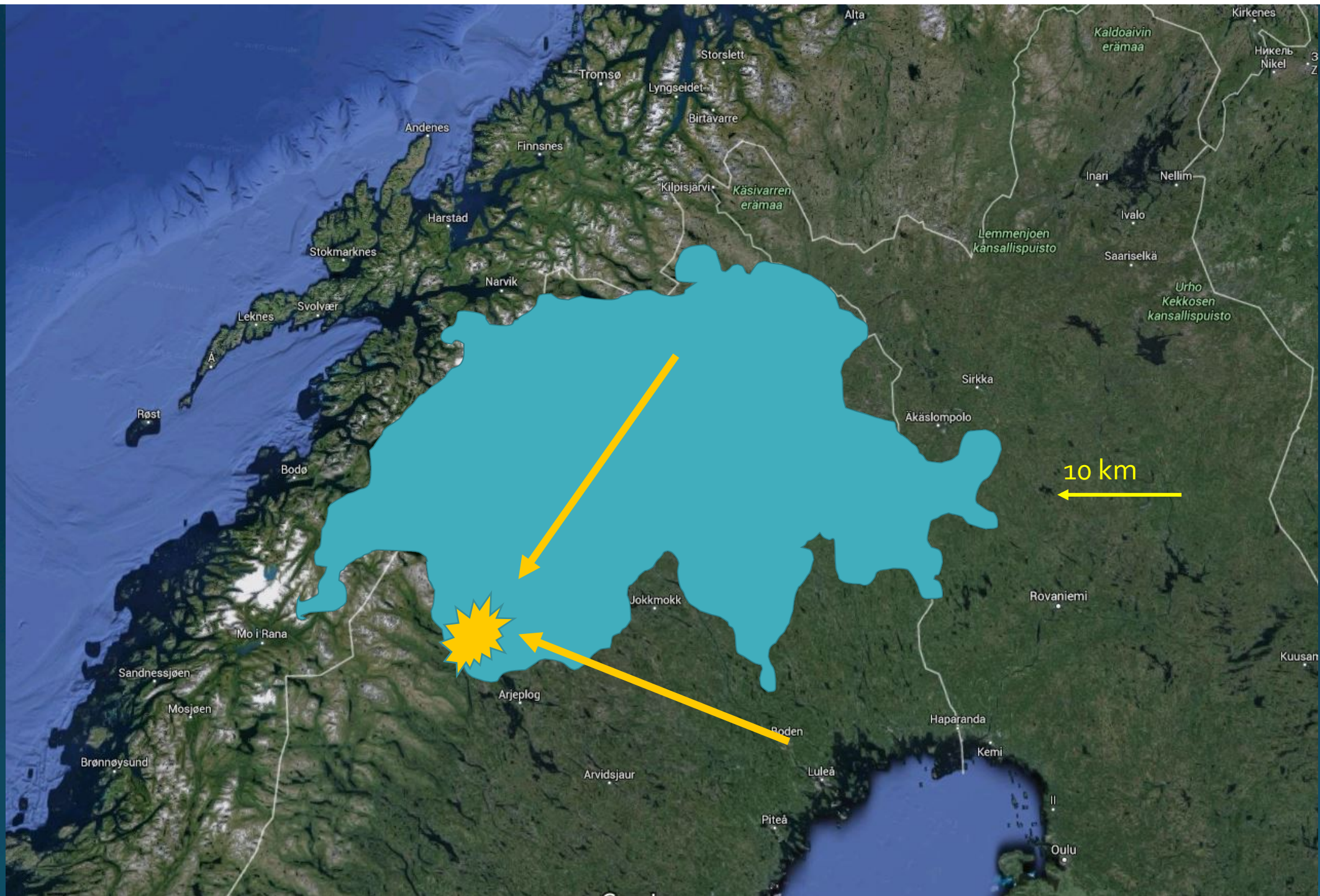




















A photograph of three rescue workers in high-visibility orange and yellow gear running through a snowy field. The workers are carrying equipment, and the scene is captured in a slightly blurred, action-oriented shot. The background is a vast, open, snow-covered landscape under a pale sky.

The team responds to approx **10** incidents a year





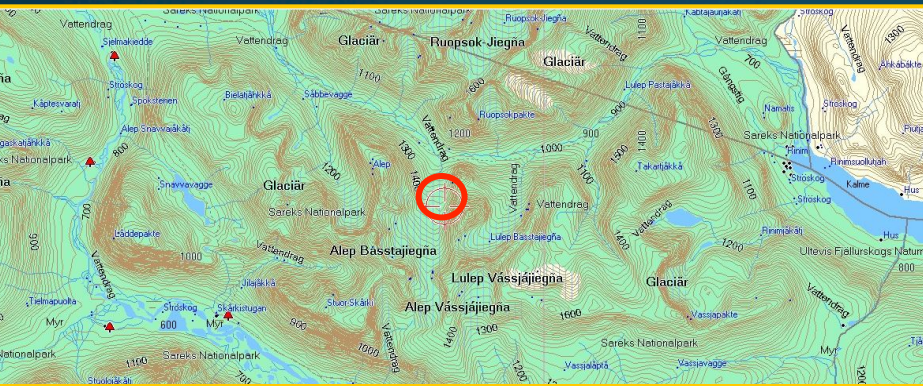




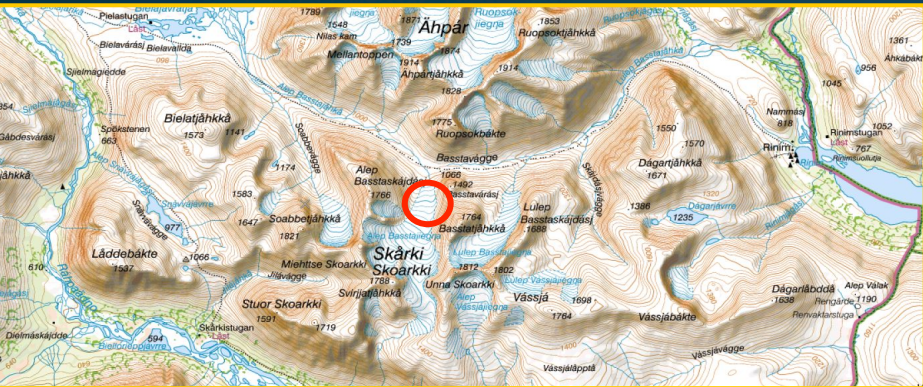




NATT SÄNG/BÄDD
HALMSTAD C - GÖTEBOR
DATUM TAG AVG TID
20.07.96 612 14.22
Salong
Röklare 2 KI



Map as displayed at police dispatcher



Map used by rescuers



Terrain as Google displays it

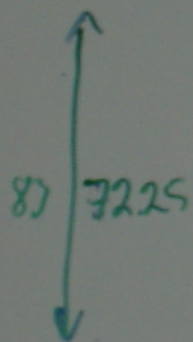


HWP 9

FR-44

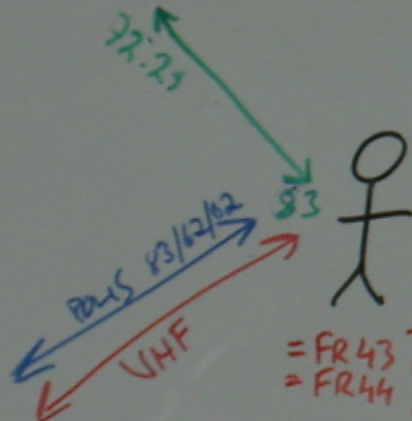
72.25 MHz

(POLIS 83)



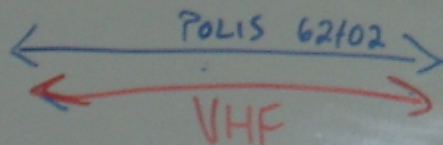
72.25

72.25



= FR 43 }
= FR 44 } P 502 = B96

VHF ALPWA 150-160 MHz



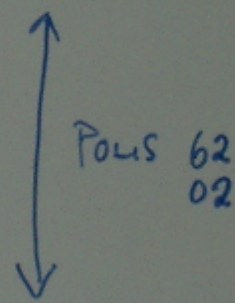
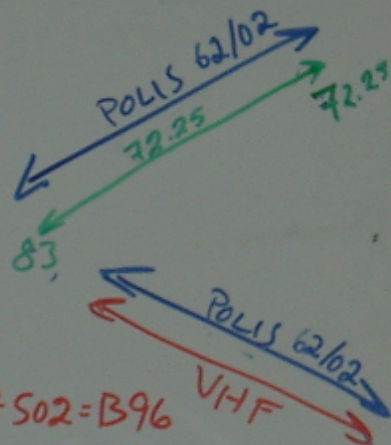
HWP 11

FR-43

78-80 MHz

FR-44

72.25 MHz



EC-135
EC-120

FR 43 }
FR 44 } = C-52

68-80 MHz

VHF

150-170 MHz + NORSK

(UHF) EC-135

380-420 MHz

HWP 10 HWP 4

FR-43

78-80 MHz

VHF

150-170 MHz

“In the fog of war..”

...what is the difference that actually
makes a difference...?



Team spirit

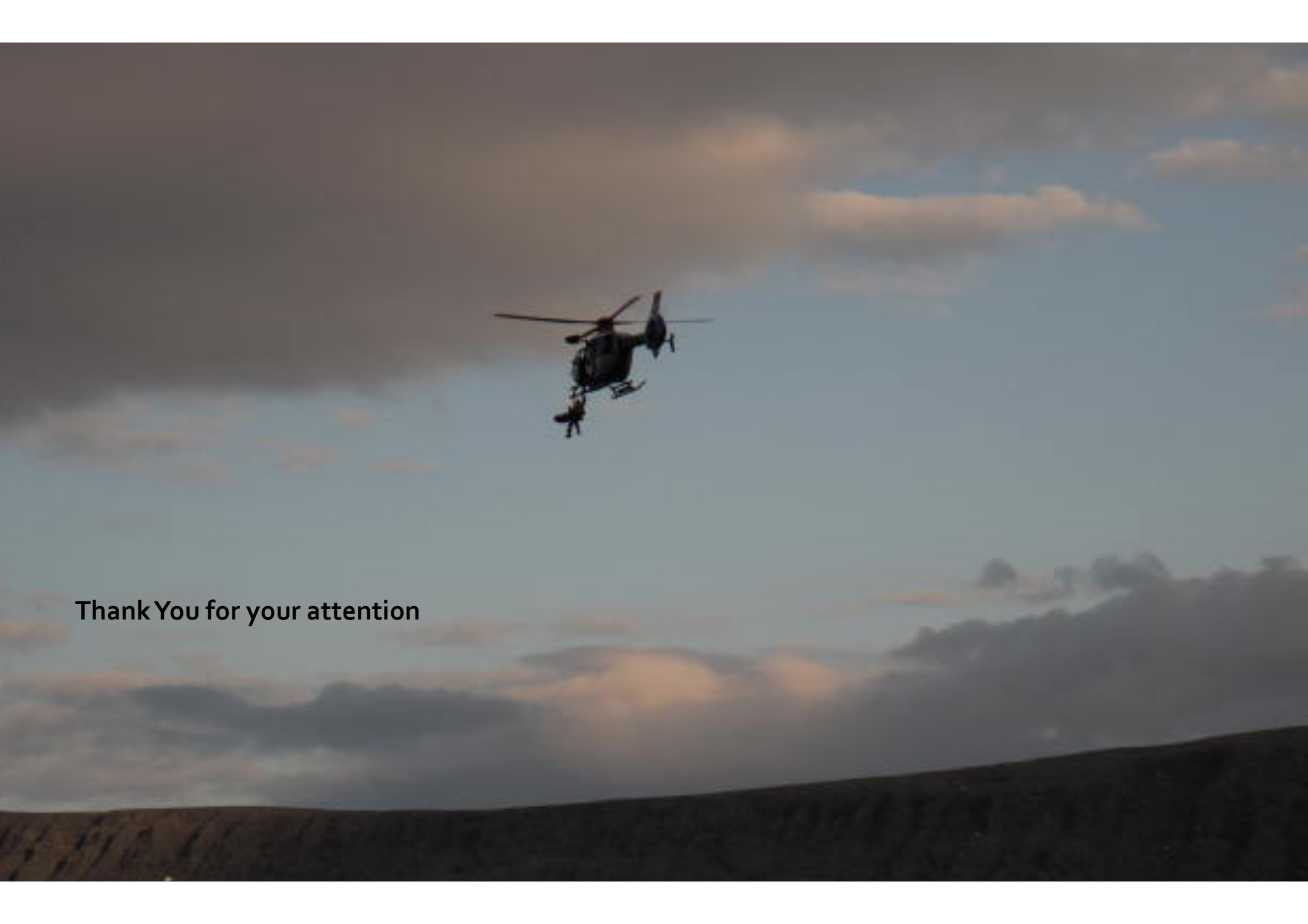












Thank You for your attention