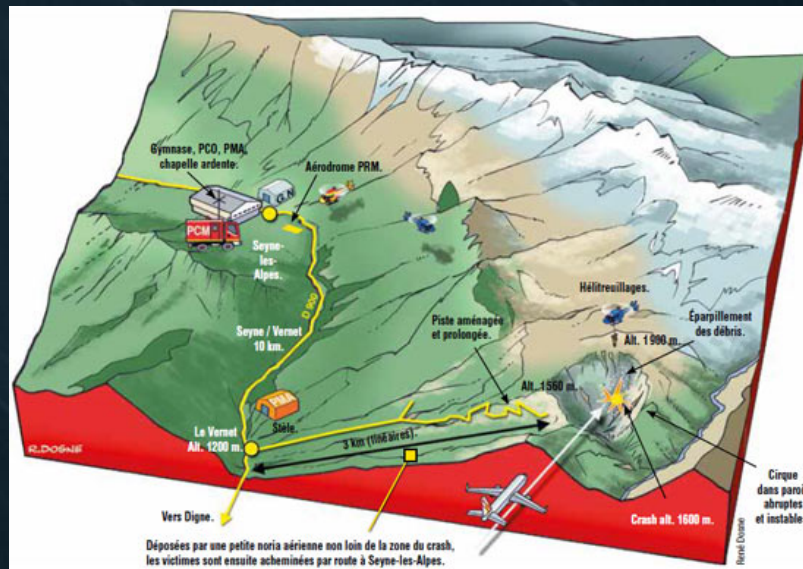




# KILLARNEY 2015



# SATER and NOVI





# SATER and NOVI

- ▣ SATER : Aero Terrestrial Rescue Plan
  - IM 97-508; ORSEC dispositive, NOVI general and SATER specific disposition
  - Information gathering
  - Research
  - Rescue

# SATER and NOVI

- ▣ SATER : Aero Terrestrial Rescue Plan
  - DOR, COR, RCC
  - SATER Alpha
  - SATER Bravo
  - SATER Bravo Limit
  - SATER Charly



# NOVI / Rescue phase

- ▣ Working basis :
  - Worst-case scenario envisaged in term of organisation
  - 150 woundeds
  - No road access
  - Worst probable / possible meteo

# NOVI / Rescue phase

- ▣ Organisation :
  - Departement level
    - ▣ Departmental command / coordination center
    - ▣ Departmental rescue command center
    - ▣ On site command center
  - Zonal level
    - ▣ Zonal Operational Center
  - National level

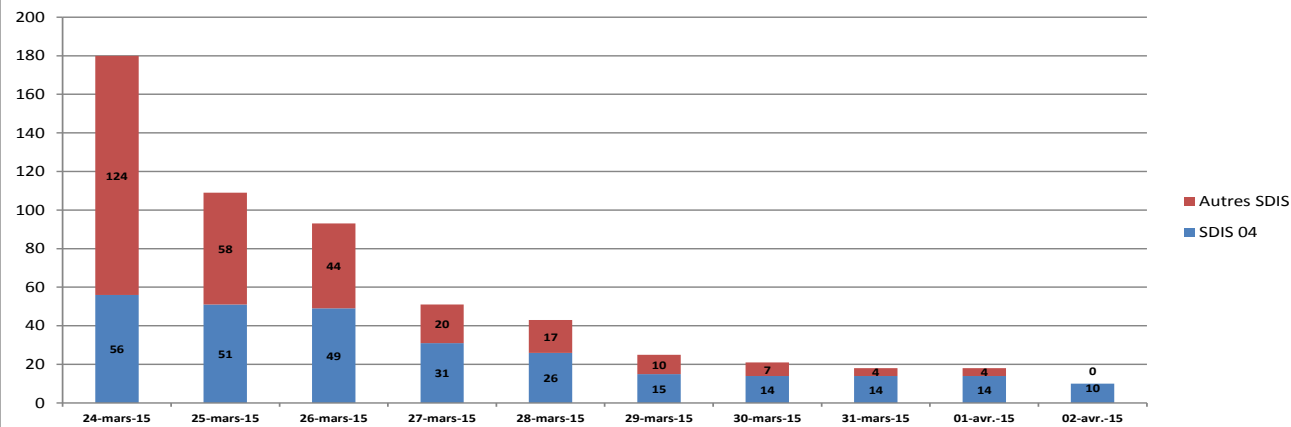
# Rescue phase

- ▣ First helicopter :
  - Section Aérienne Gendarmerie Digne
    - ▣ Localisation of the site less than 30 mn after the crash
  
- ▣ 16 Others helicopters :
  - Gendarmerie, Sécurité Civile, Marine, Armée de terre, Armée de l'air, SAMU ...
  
- ▣ At least 3 planes
  - Mirage, KC135 , AWACS

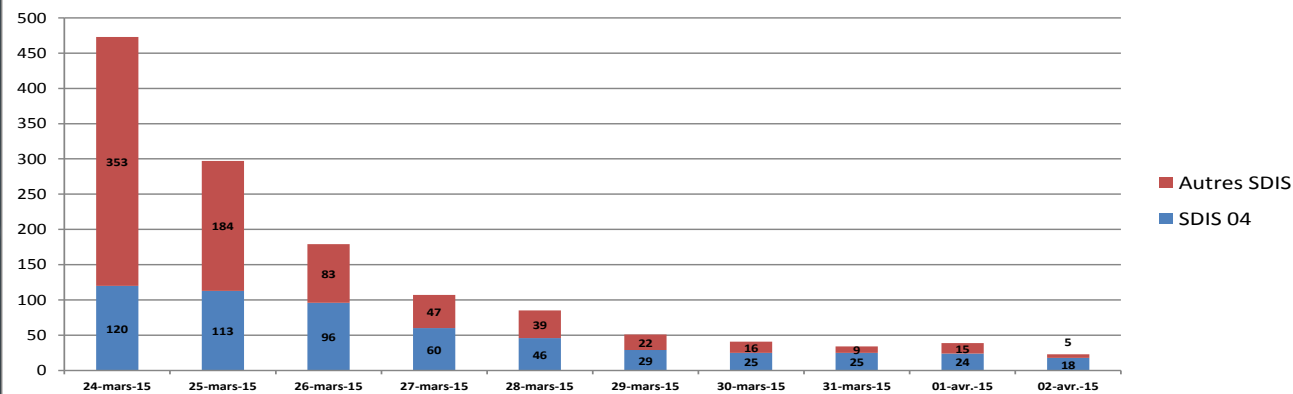


# Rescue phase

Bilan des véhicules



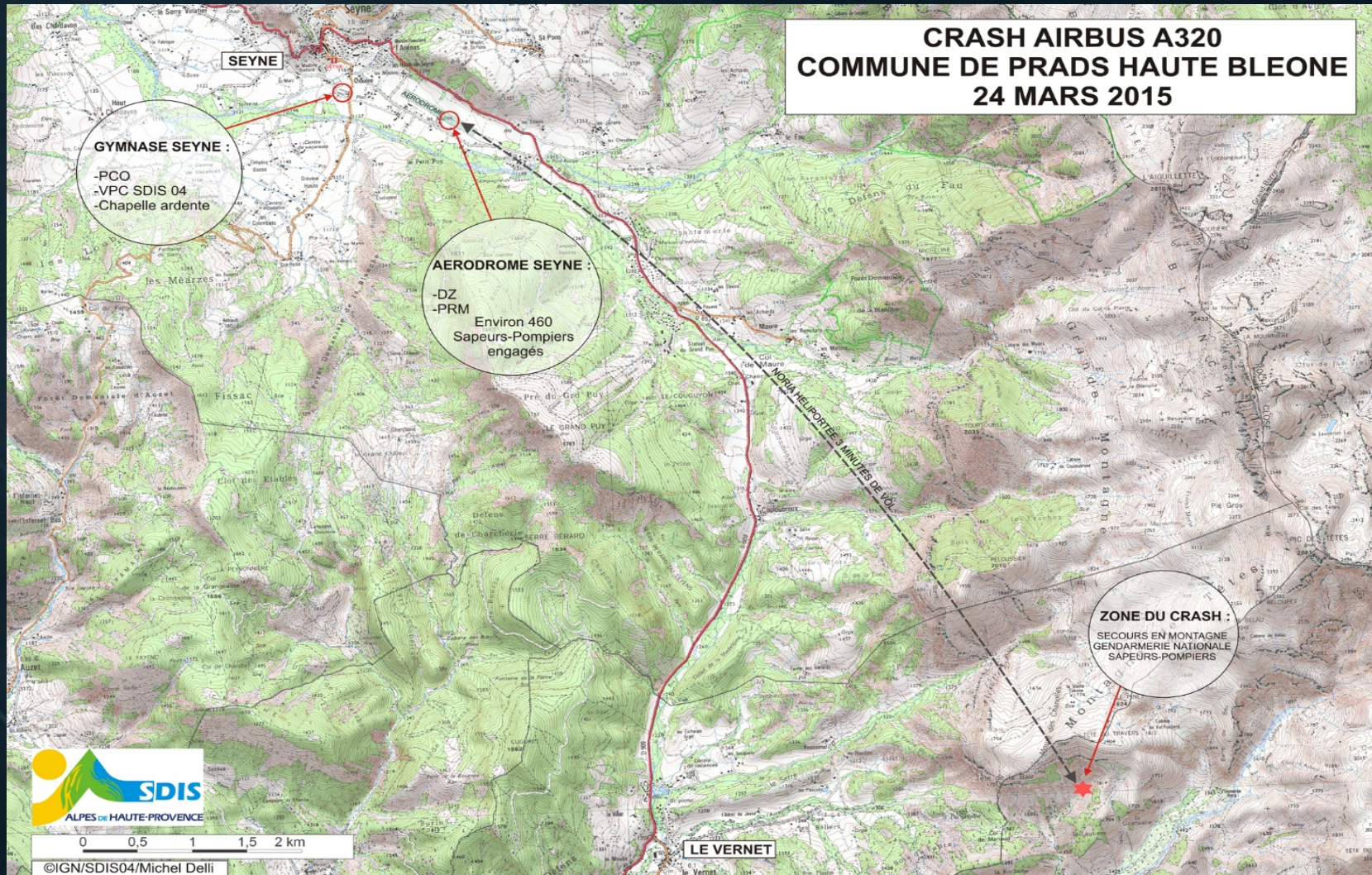
Bilan des personnels



Vehicles  
and  
men



# Rescue phase





# Heavy lift duties





# Chemical analysis and sampling



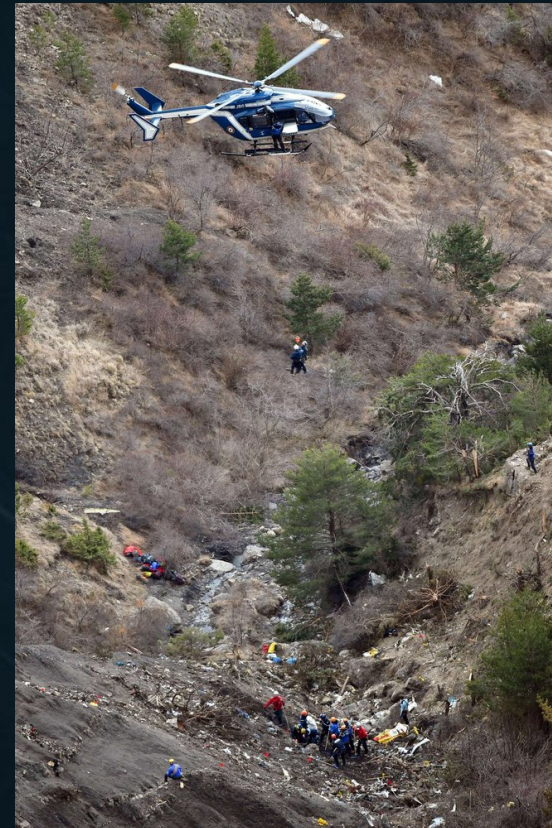
# Chemical analysis and sampling

- ▣ First hour on board manifest verification
- ▣ VDIP BMPPM
  - Sampling Detection Identification Vehicle
- ▣ Mission:
  - Detect and analyse all potential toxic elements
  - Remove any doubt about radiological contamination
  - Assess the risks for the operators
  - Assess the environmental impact and risks
  - Delimitation of the contaminated area

# Chemical analysis and sampling

## ▣ Methods

- Soil , air and water sampling
- On site detection
- Spectrophotometric analysis





# Chemical analysis and sampling

## ▣ Results:

### ■ Air analysis:

- ▣ No radiological elements
- ▣ Jet Fuel A1

### ■ Soil analysis:

- ▣ No radiological elements
- ▣ Jet Fuel A1
- ▣ Traces of hydraulic fluid

### ■ Water analysis before depolution dam

- ▣ Jet Fuel A1 before depolution dam
- ▣ Traces of hydraulic fluid before depolution dam



# Chemical analysis and sampling

- ▣ Environment:
  - Hydraulic fluids
  - No pollution identified after the onsite depolution dam
  - No pollution identified in the water in surrounding villages
  
- ▣ Toxicology:
  - ▣ Jet fuel A1





# Families psychological support





# Families psychological support

- ▣ A complex muticultural and multi organisational situation
  - 16 Nationalities and at least 4 religions among victims
  - 3 diplomatics corps on site H24
  - 4 psychological support teams from 3 nationalities
  - At least 6 french organisations involved
  - A heavy implication of Lufthansa in support of families
  - A tremendous media presure
  - 2 different sites of intervention

# Families psychological support

- ▣ Key words: organization and coordination
  - A clear organization chart
    - Medical and psy support coordination leader
    - Teams leaders
      - German, Spanish, French psy team leaders
      - Interpreters , Red Cross, Log, security team leader etc ...
  - Clear objectives
    - Welfare of the victims
    - Respect of medical confidentiality
    - Independence and neutrality
    - Capacity to host each family group independently
    - Create and keep medical records if needed

# Families psychological support

- ▣ Complete integration in the operational chain of command
  - Director of Medical Teams (DSM)
  - Advanced Operational Command Post
  
- ▣ Clear area organization
  - Geographical sectorization

# Families psychological support

## ▣ Results

- More than 450 formal and informal psychological interviews

# Teams psychological support

## ▣ Results

- Mountain rescue teams
- SD Teams
- Translators
- Other organizations support teams



