

Broad Peak Winter Expedition 2013

First Ascent



Zdjęcie drogi na Broad Peak od północnego zachodu.

Droga wyprawy zimowej PZA 2012/13.

Pierwsze zimowe wejście na szczyt: M Berbeka, A.Bielecki, A.Malek, T.Kowalski

Fot. Robert Szymczak 2008

The Leader and the Team

- **Krzysztof Wielicki**
- **Maciej Berbeka**
- **Adam Bielecki**
- **Tomasz Kowalski**
- **Artur Małek**





Broad Peak 8047m

Biwak szturmowy, 7600m

Obóz III, 7150m

Obóz II, 6200m

Obóz I, 5600m

After the summit push 5th March, two of them did not return.

Broad Peak 8047m

Summit Day Broad Peak Winter Expedition

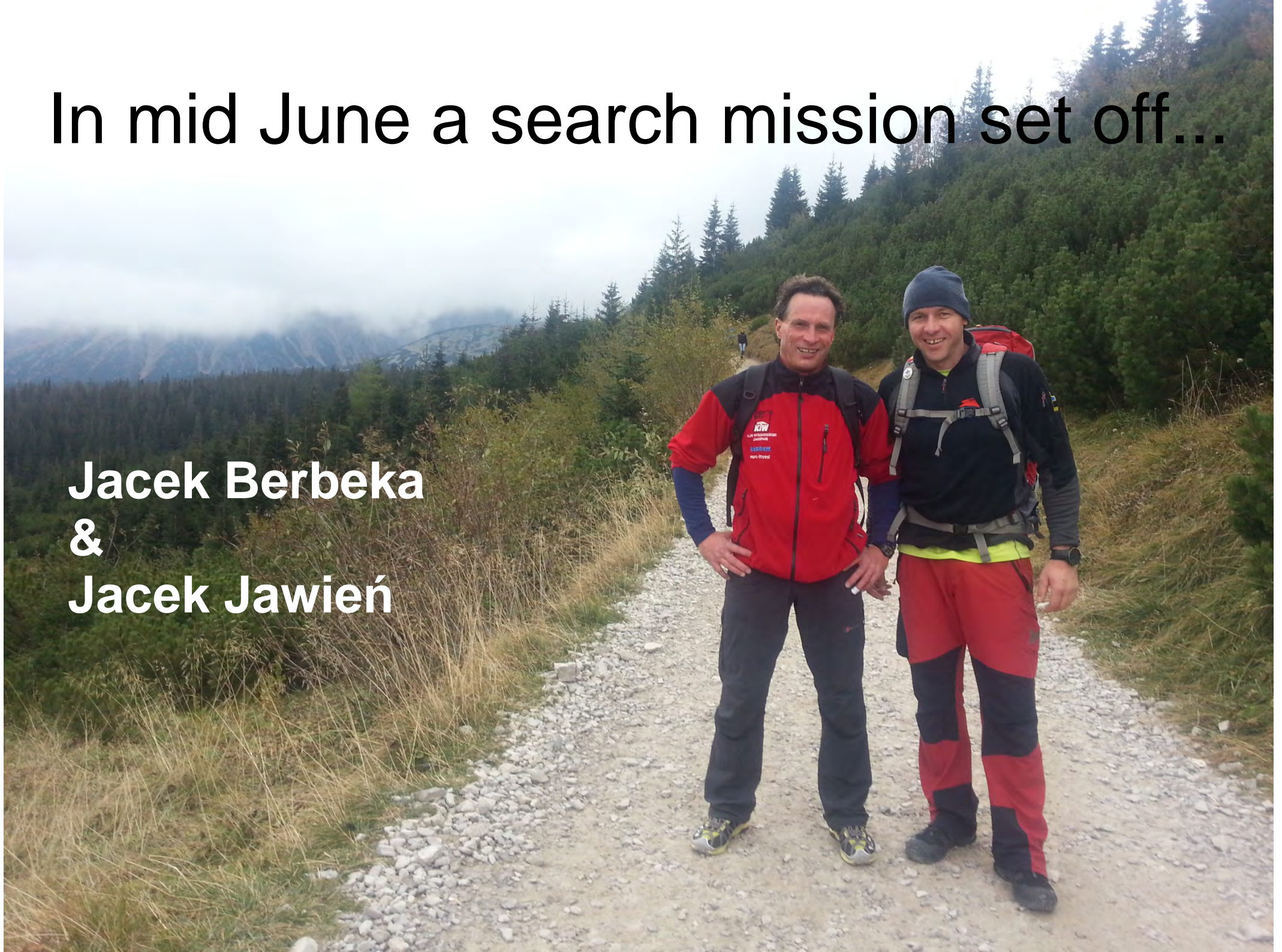
05.03.2013
4.00 am

Maciej Berbeka & Tomasz Kowalski



In mid June a search mission set off...

**Jacek Berbeka
&
Jacek Jawień**



...Its aim is only one. To find and bury the missing climbers.



In the meantime...







Polski Związek
Alpinizmu
www.pza.org.pl







On 20th July Tomasz Kowalski's
body was found at 7950m









To find the body RECCO R9
Was of invaluable help



IN MEMORY OF

MACIEJ BERBEKA
TOMEK KOWALSKI

6th MARCH 2013

Missing on their descent after making
the first winter ascent on the
summit of Broad Peak.

FAMILIES AND FRIENDS



POLAND



During our mission 22 climbers died in the area...