







# AVALANCHE ACCIDENT

## ILCOR Guidelines 2010

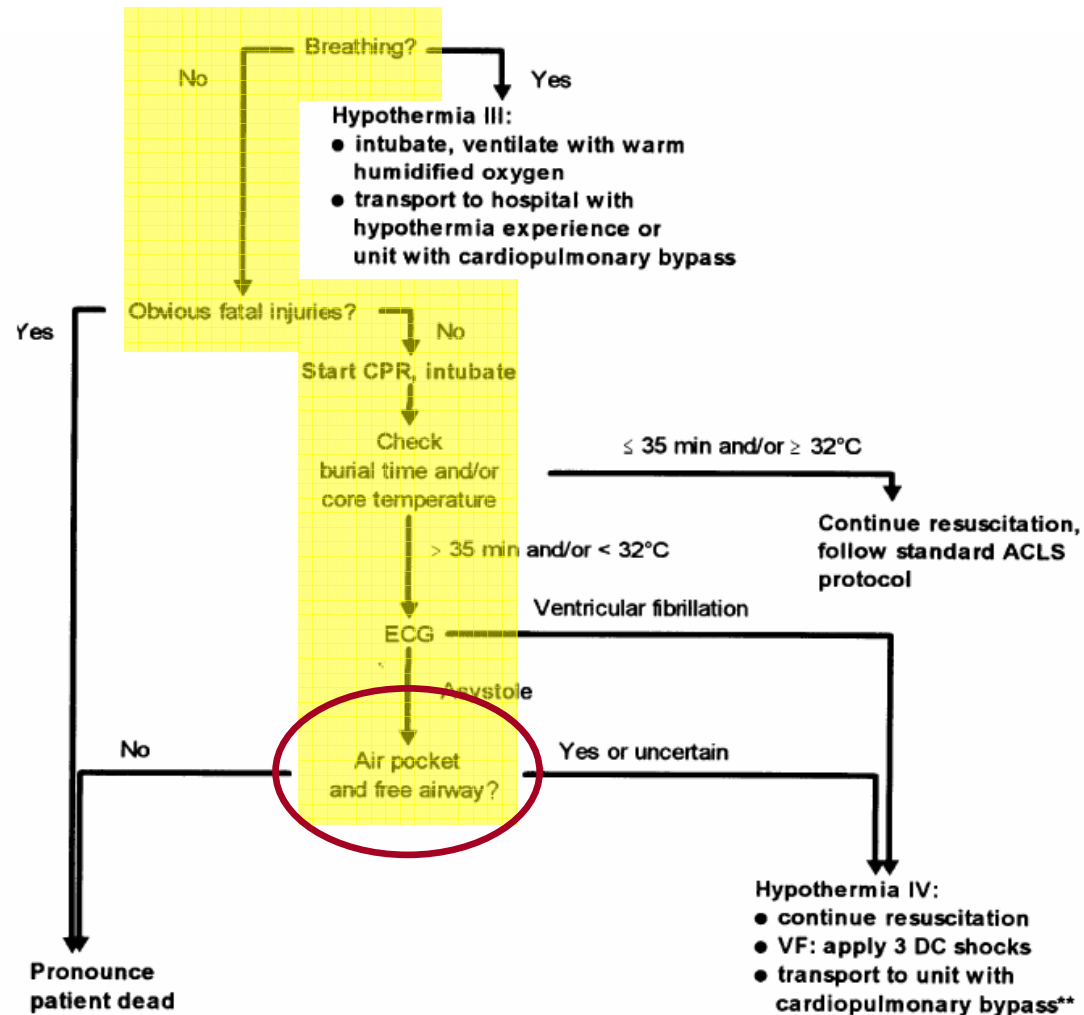
## ICAR MEDCOM algorithm 2011



Hermann Brugger

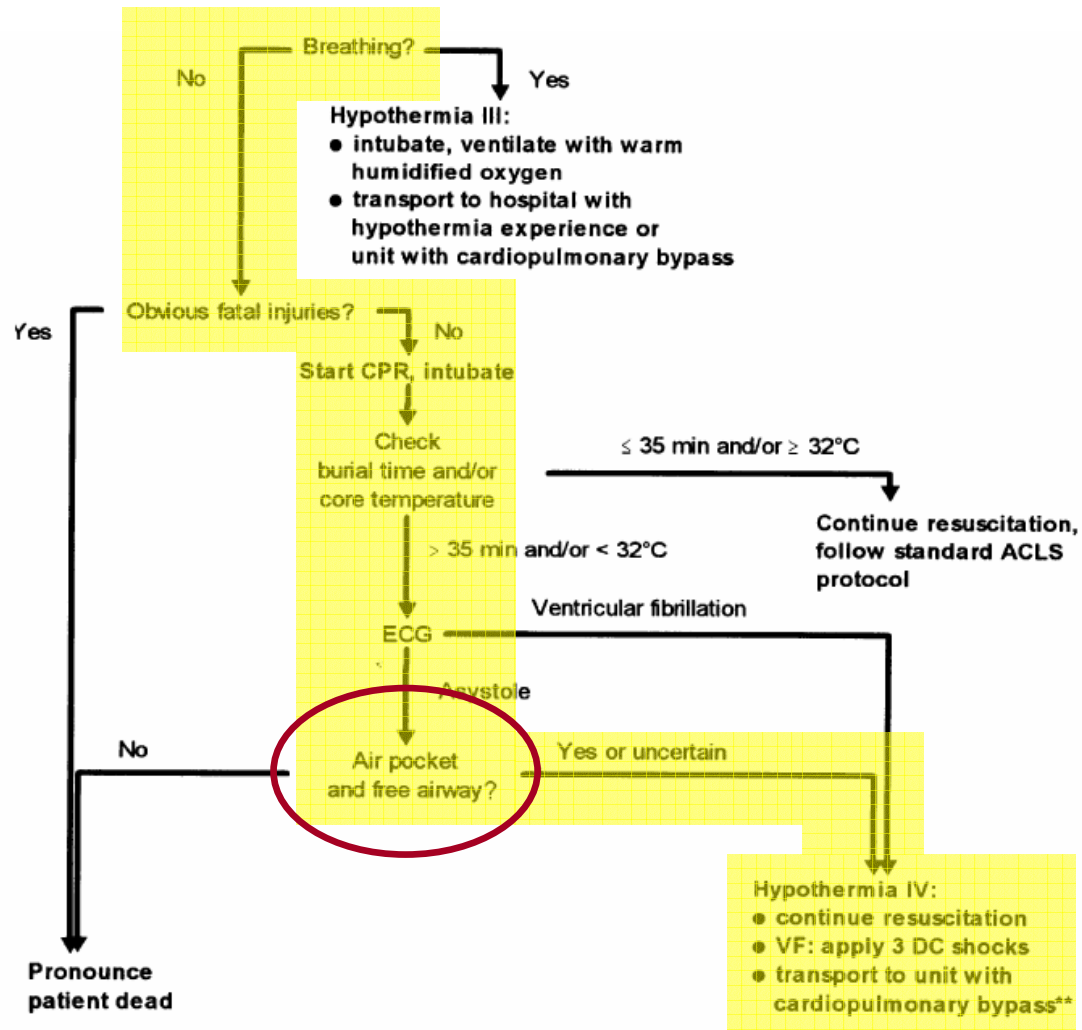


# ICAR MEDCOM recommendations 1996/2001



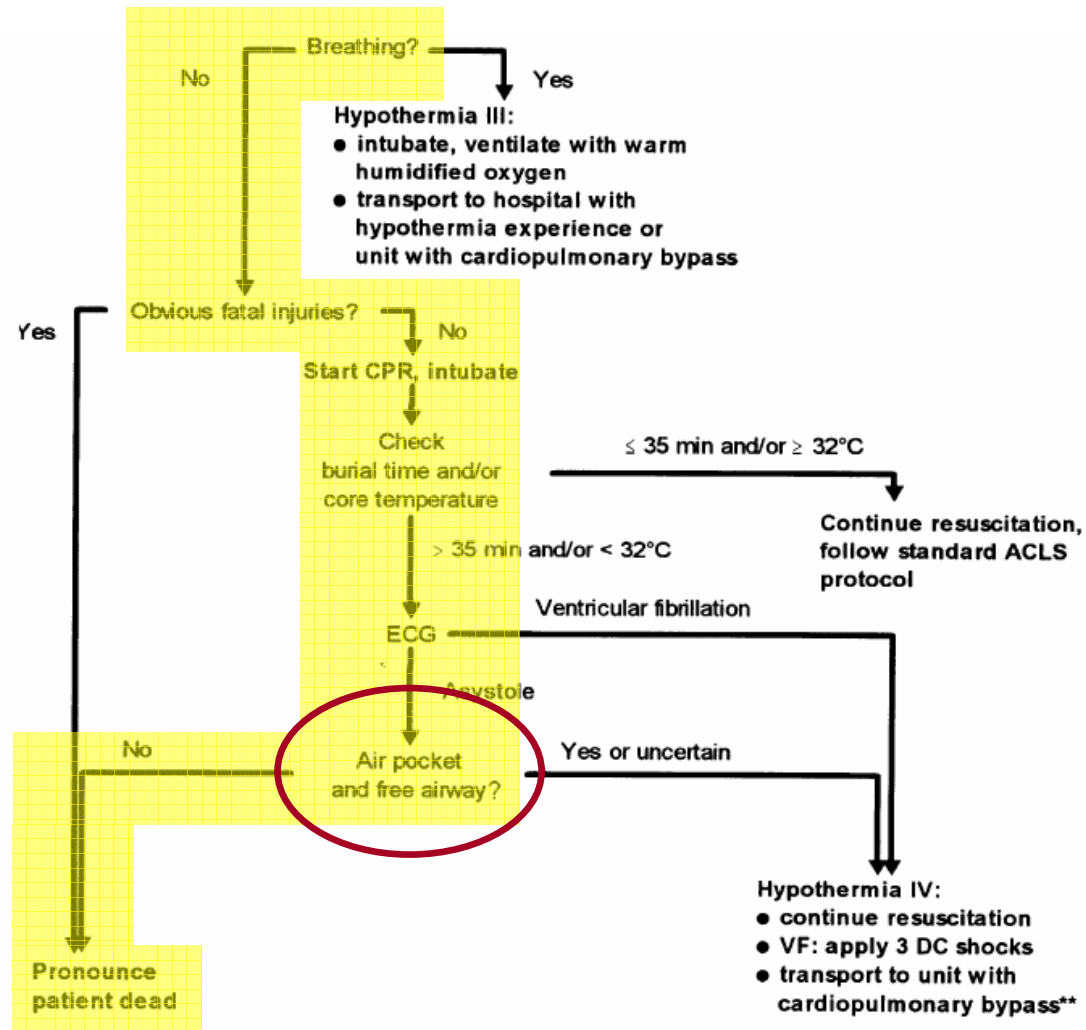


# ICAR MEDCOM recommendations 1996/2001



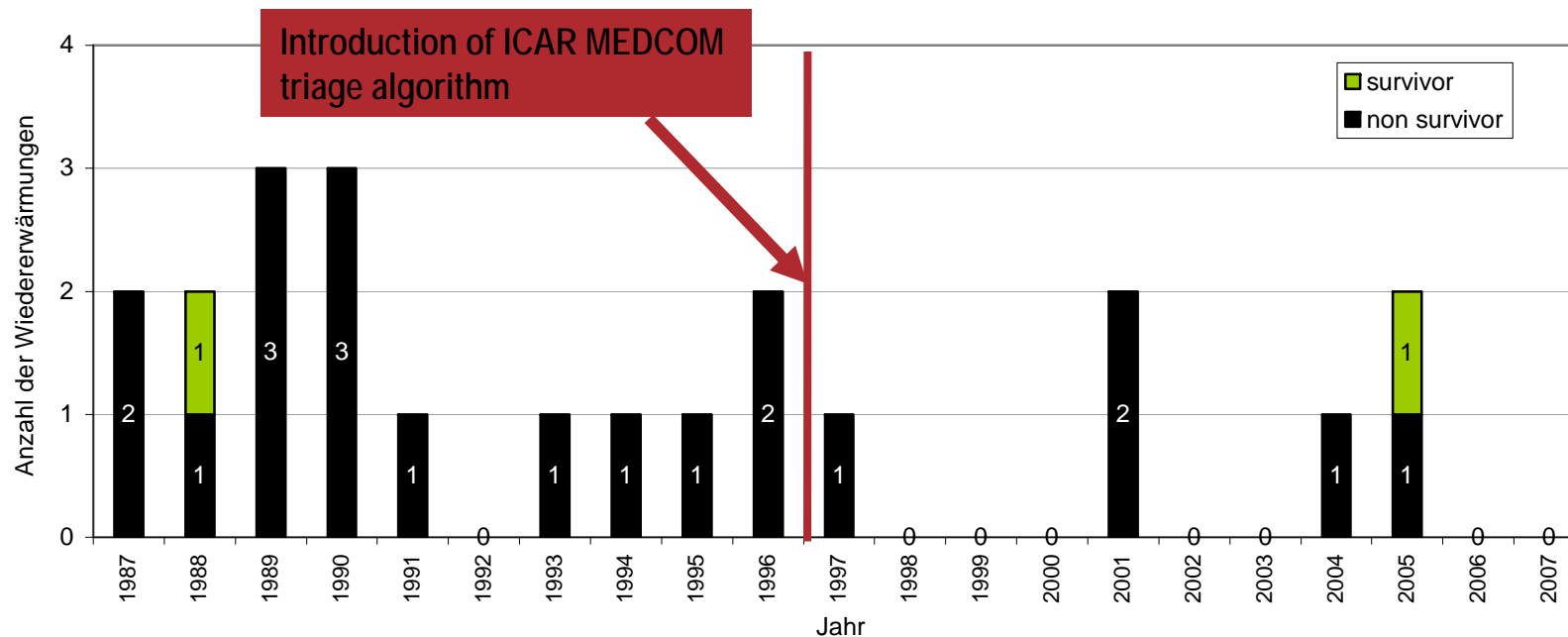


# ICAR MEDCOM recommendations 1996/2001



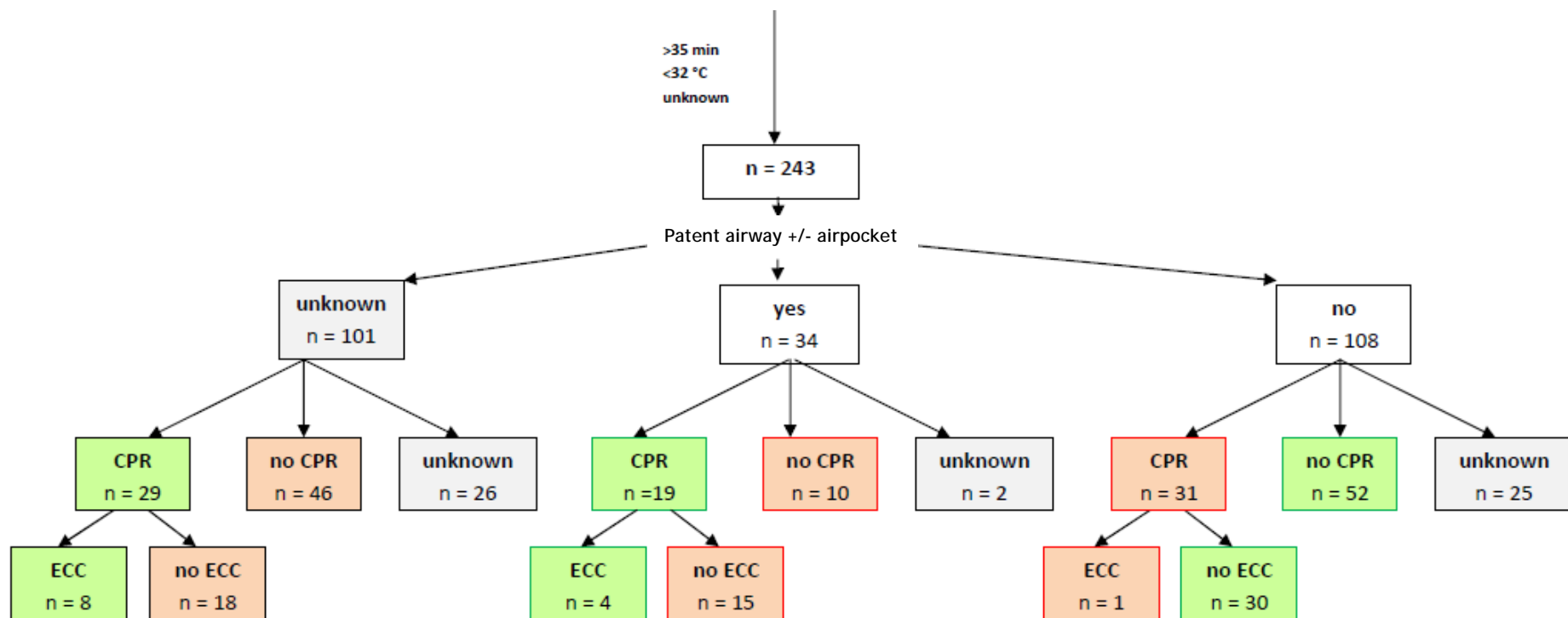


# Incidence of avalanche victims with OHCA rewarmed with ECC in Tyrol (A) 1987-2007



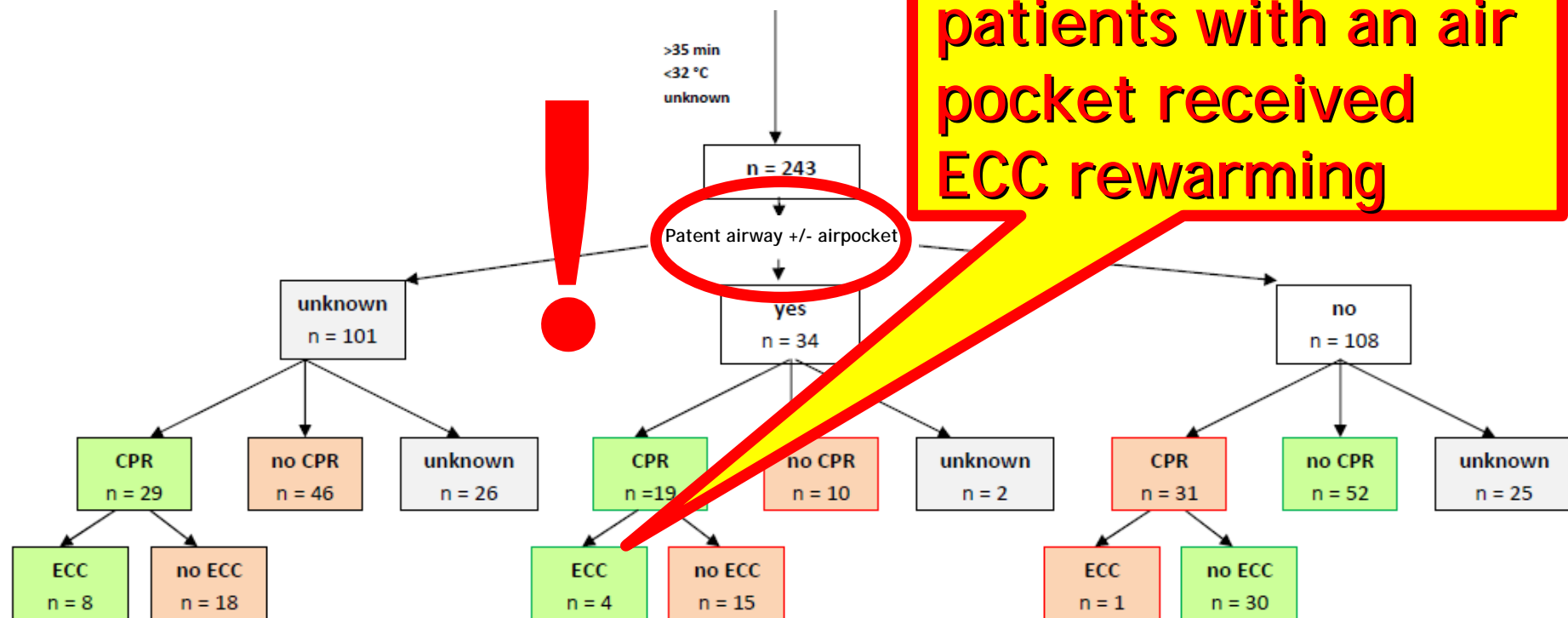


# Compliance on ICAR MEDCOM recommendations for avalanche victims with OHCA in Tyrol (A) 1987-2007





# Compliance on ICAR MEDCOM recommendations for avalanche victims with OHCA in Tyrol (A) 1987-2007





# European Resuscitation Council Article of the month June 2010

 European Resuscitation Council

Dear Peter,

The June Free Article of the Month is:  
[Prognostic factors in avalanche resuscitation: A systematic review](#)  
(Jeff Boyd, Hermann Brugger, Michael Shuster)



 Contents lists available at ScienceDirect

**Resuscitation**

journal homepage: [www.elsevier.com/locate/resuscitation](http://www.elsevier.com/locate/resuscitation)

## Review

### Prognostic factors in avalanche resuscitation: A systematic review<sup>☆</sup>

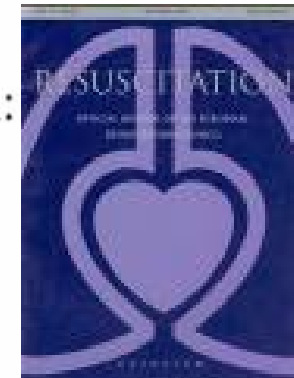
Jeff Boyd<sup>a,b,\*</sup>, Hermann Brugger<sup>c,d</sup>, Michael Shuster<sup>a</sup>

<sup>a</sup> Department of Emergency Medicine, Mineral Springs Hospital, Banff, AB, Canada

<sup>b</sup> International Federation of Mountain Guides, Banff, Alberta, Canada

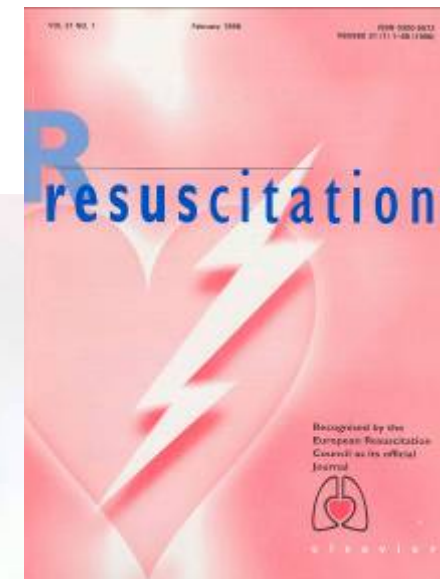
<sup>c</sup> EURAC Institute of Mountain Emergency Medicine, Bozen/Bolzano, Italy

<sup>d</sup> Innsbruck Medical University, Innsbruck, Austria





# AHA & ERC CoSTR Guidelines ILCOR 2010

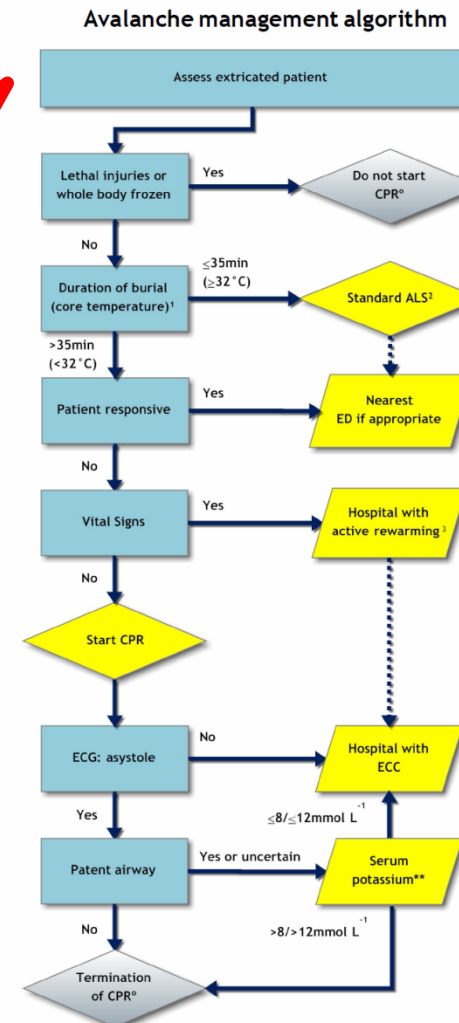




# ICAR MEDCOM recommendations 2011

Intended for use by  
physicians and  
other advanced life  
support skilled  
clinicians

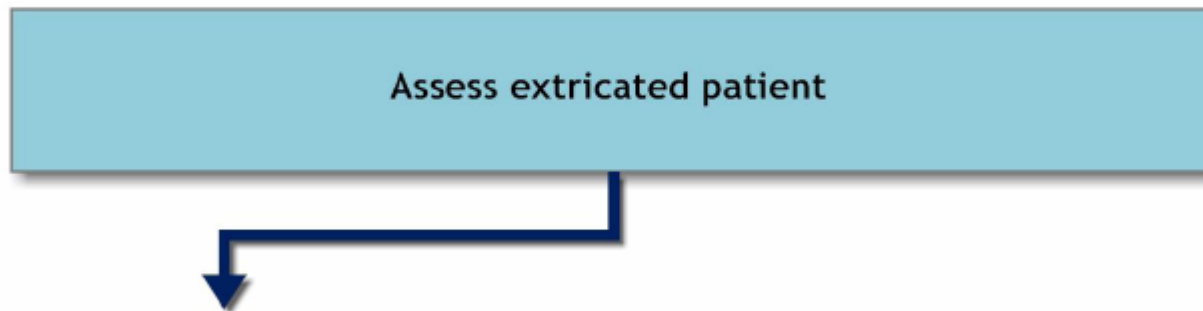
Hermann Brugger, Jeff Boyd,  
Fidel Elsensohn, Peter Paal,  
Giacomo Strapazzon, Eveline  
Winterberger, Ken Zafren





# ICAR MEDCOM recommendations 2011

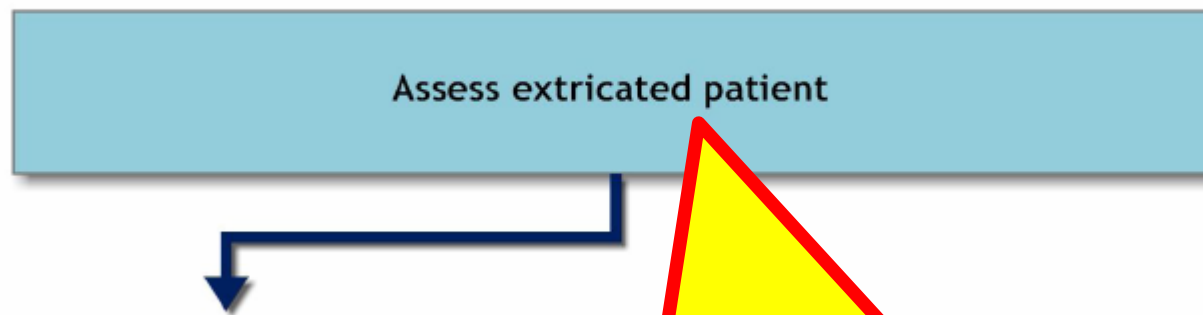
## Avalanche management algorithm





# ICAR MEDCOM recommendations 2011

## Avalanche management algorithm

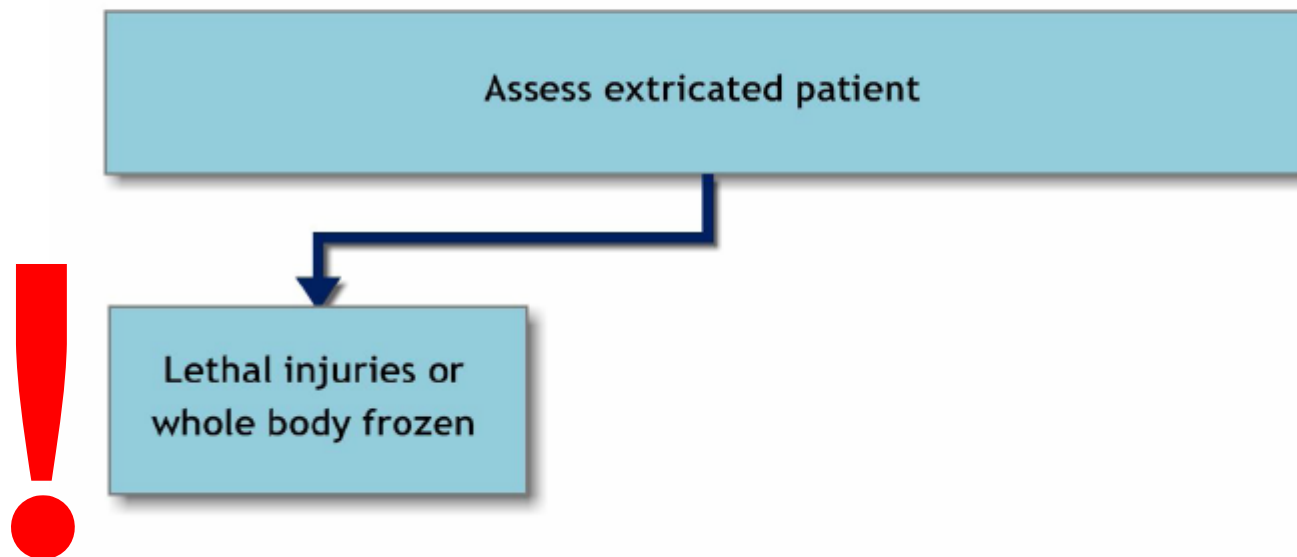


Gentle extrication. Core temperature + ECG monitoring, spinal immobilization, oxygen, insulation, hot packs on trunk; intravenous or intraosseous line only if within a few minutes; trauma treatment if indicated.



# ICAR MEDCOM recommendations 2011

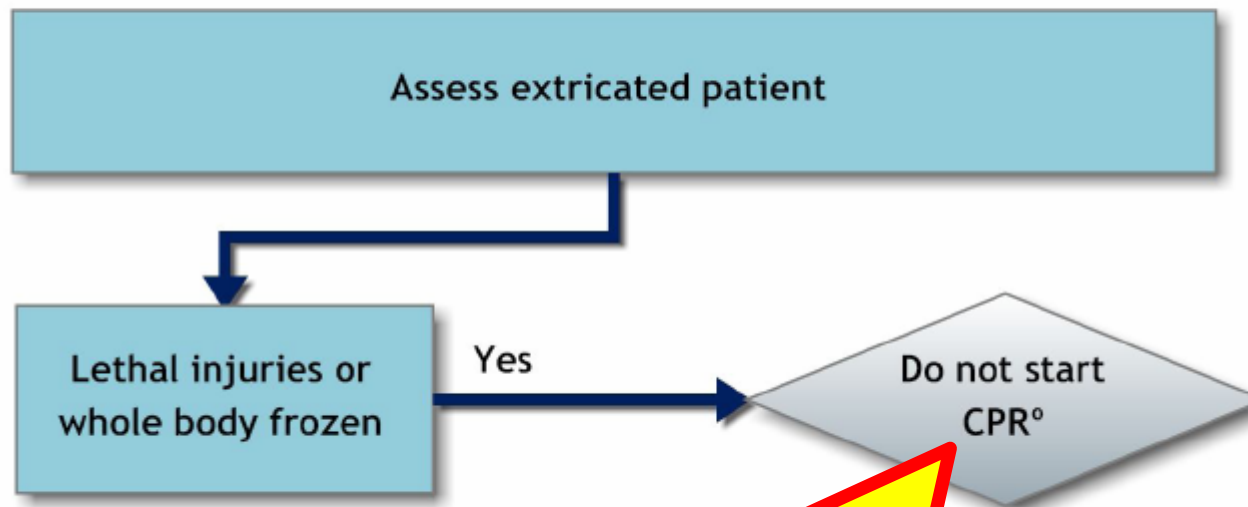
## Avalanche management algorithm





# ICAR MEDCOM recommendations 2011

## Avalanche management algorithm

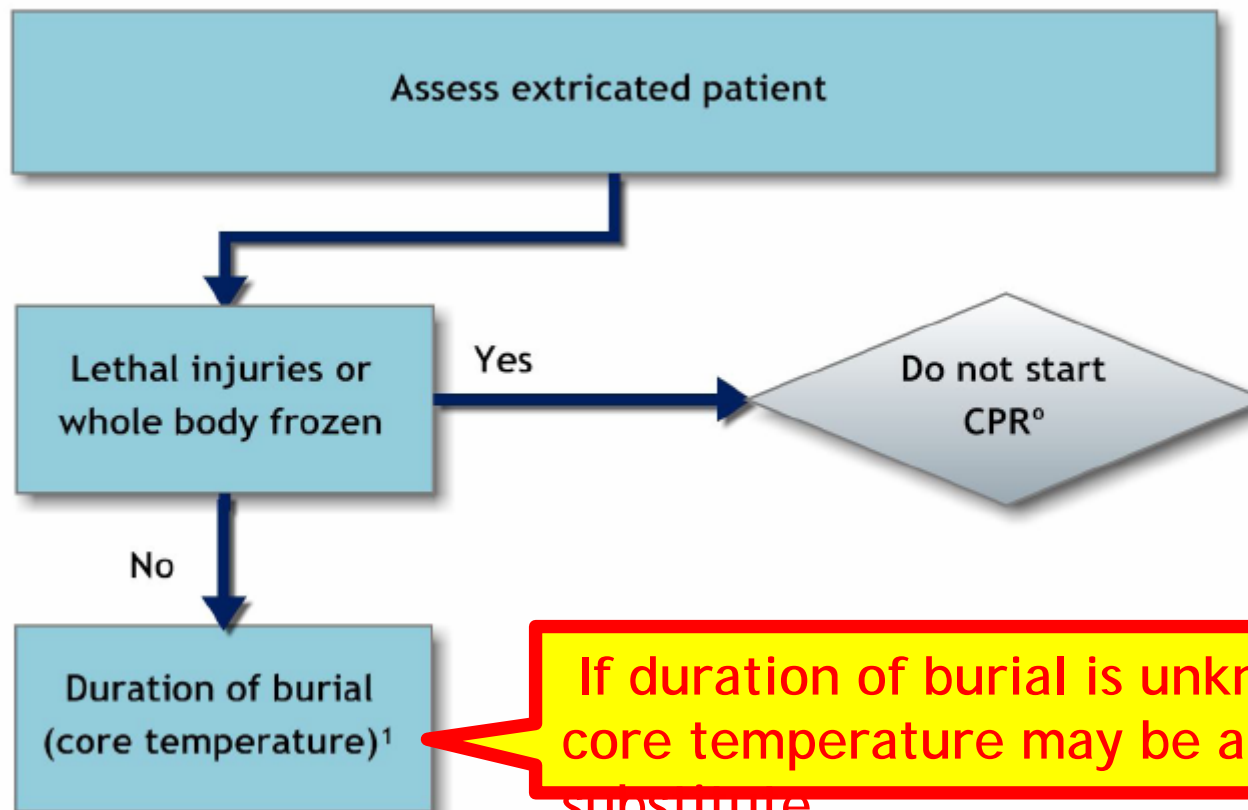


Clinicians may consider not to start or stopping CPR if it is associated with increased risk to the rescue team.



# ICAR MEDCOM recommendations 2011

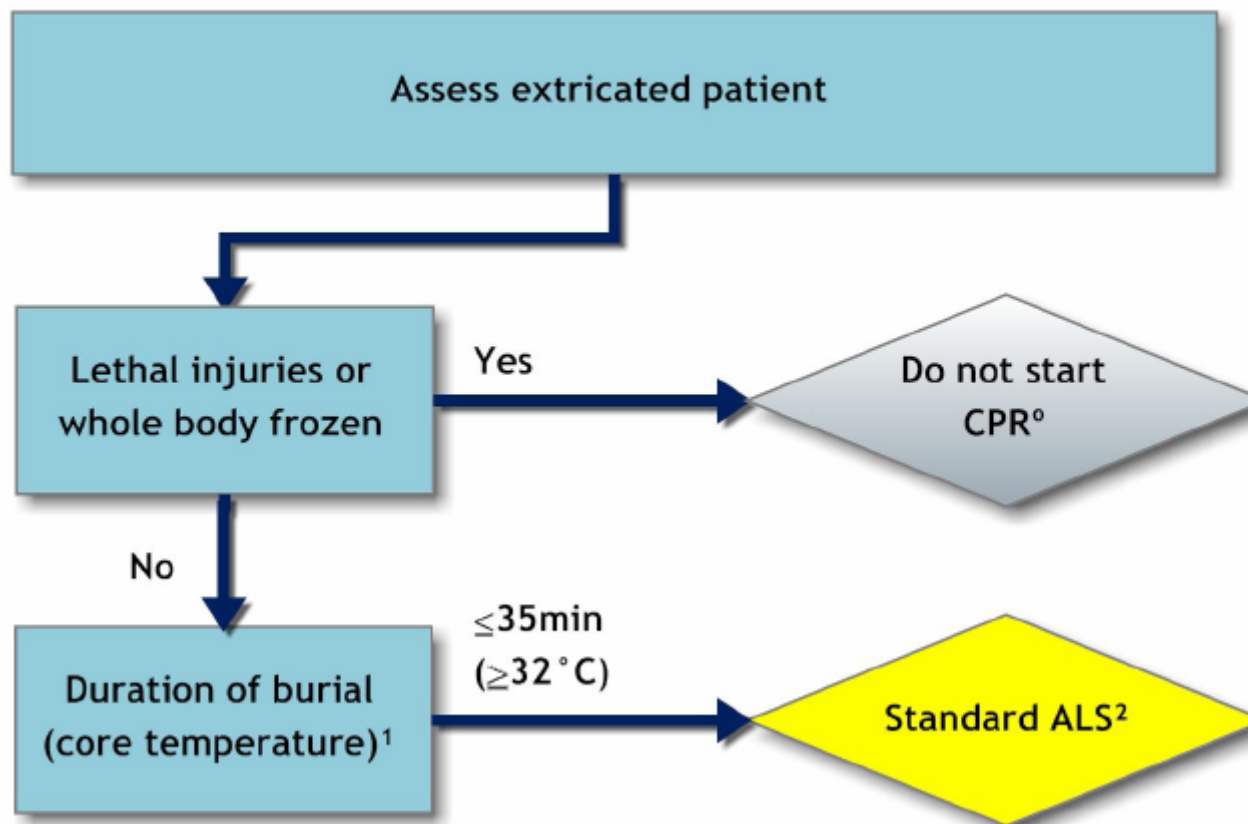
## Avalanche management algorithm





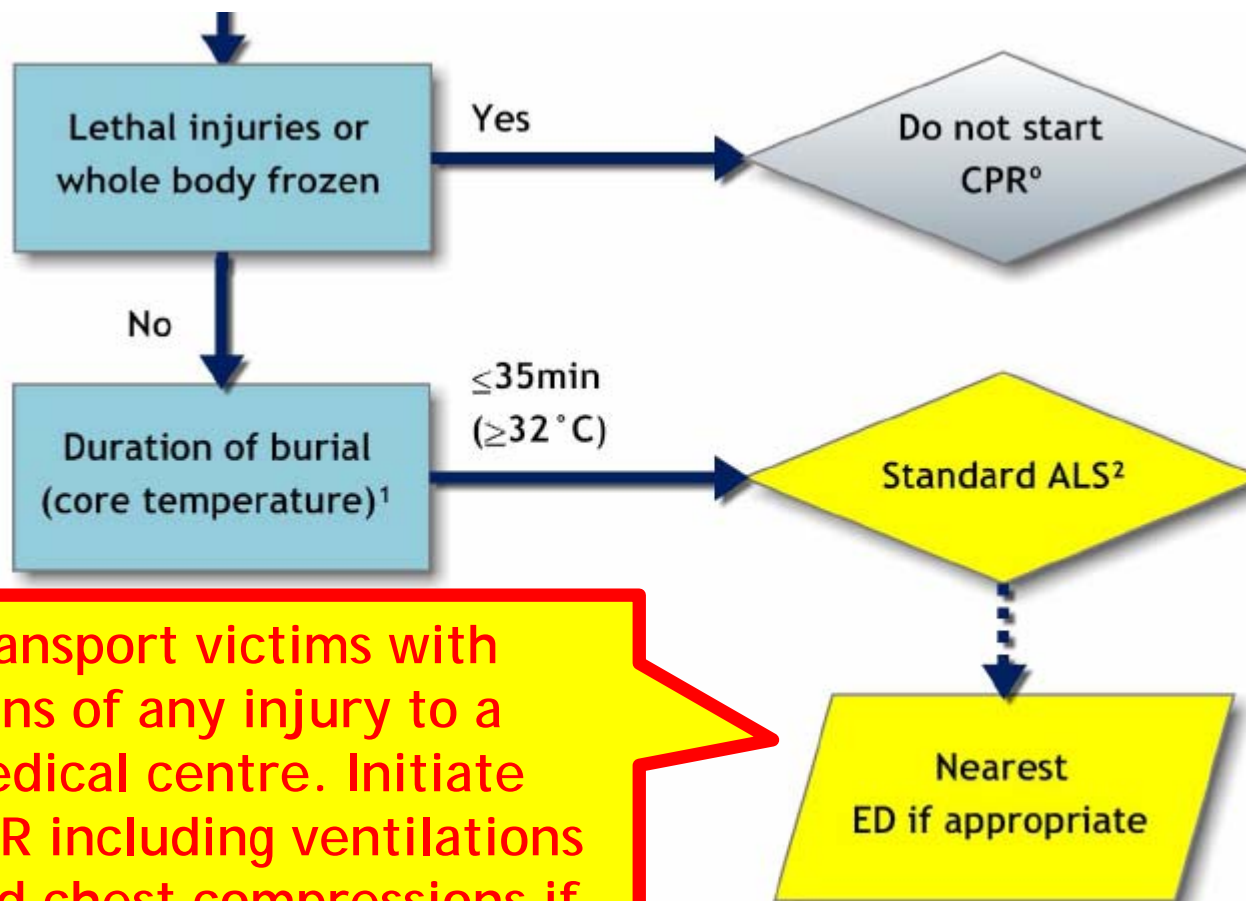
# ICAR MEDCOM recommendations 2011

## Avalanche management algorithm





# ICAR MEDCOM recommendations 2011

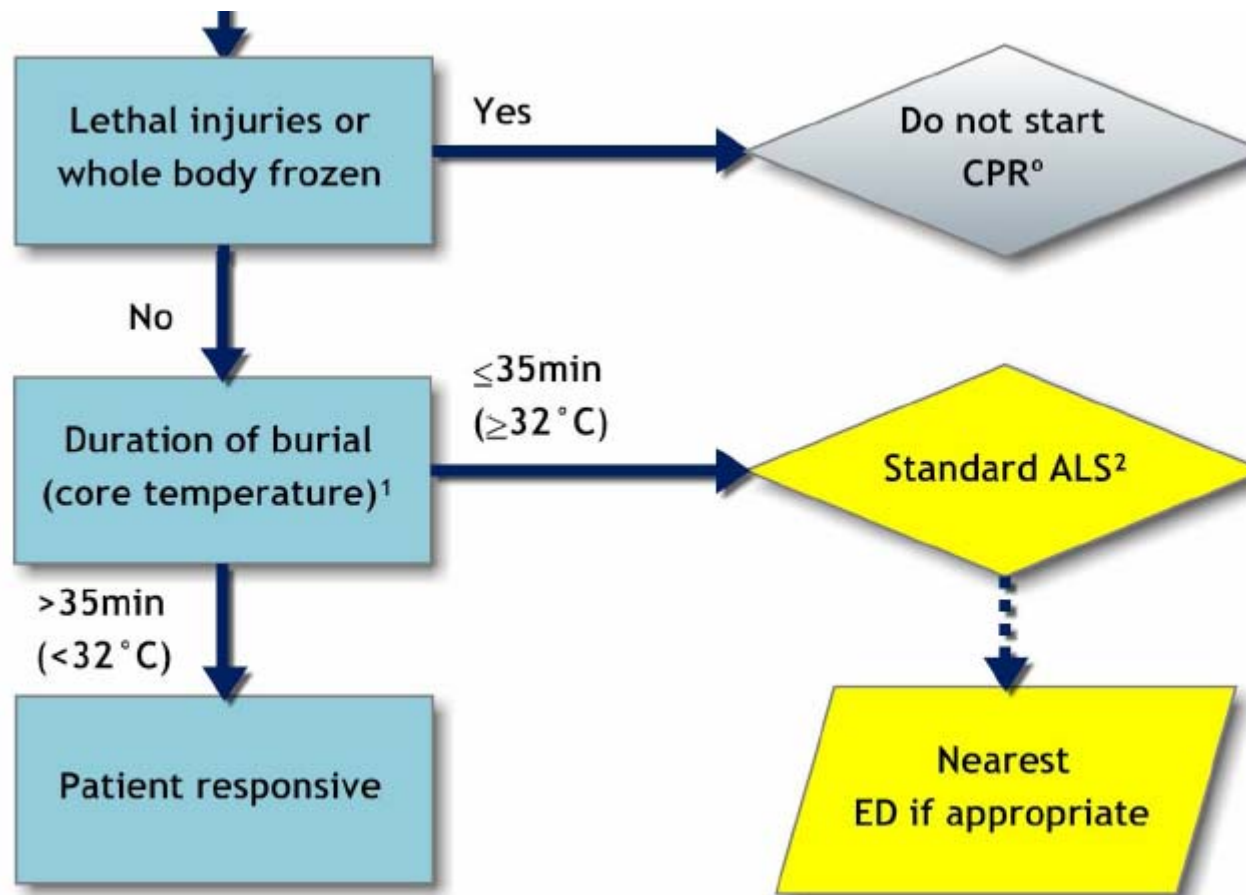


Transport victims with signs of any injury to a medical centre. Initiate CPR including ventilations and chest compressions if necessary.



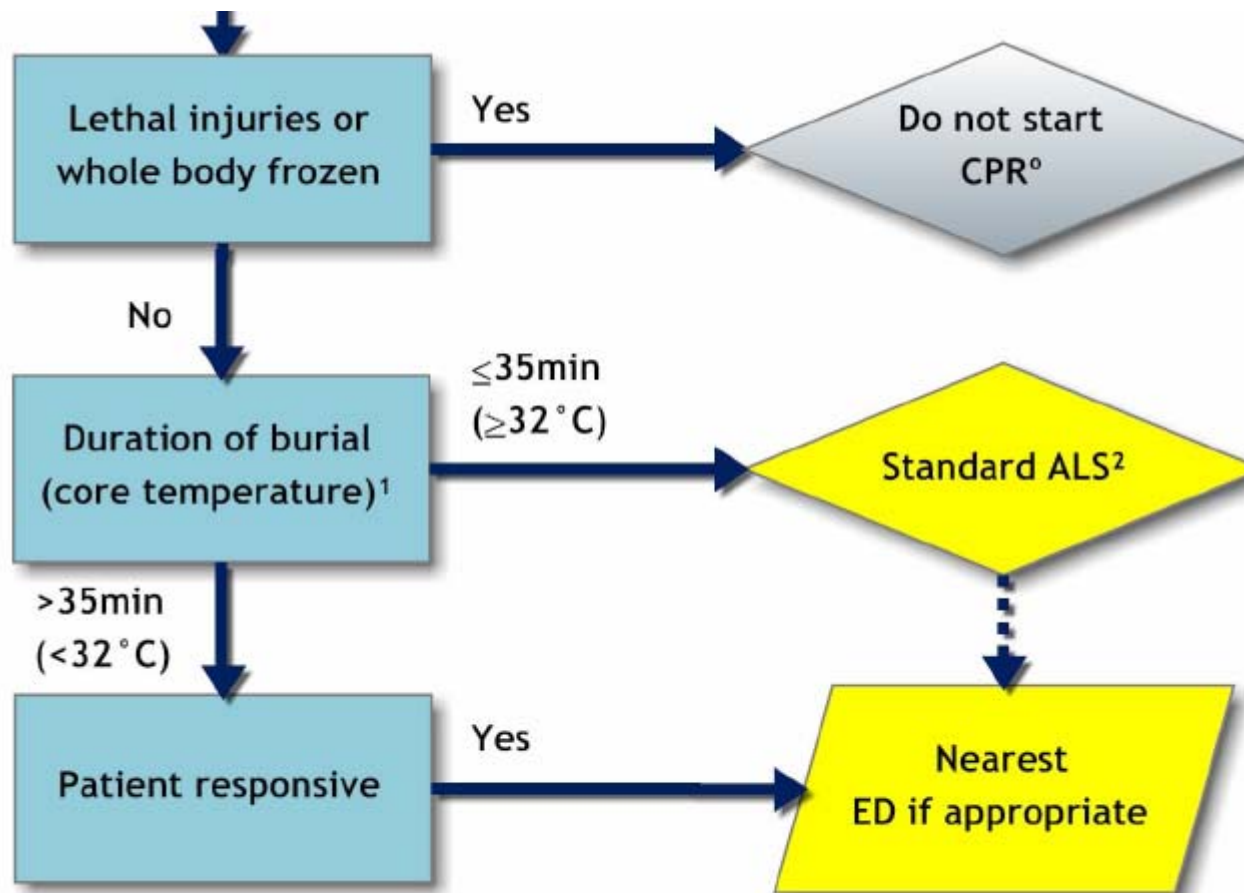


# ICAR MEDCOM recommendations 2011



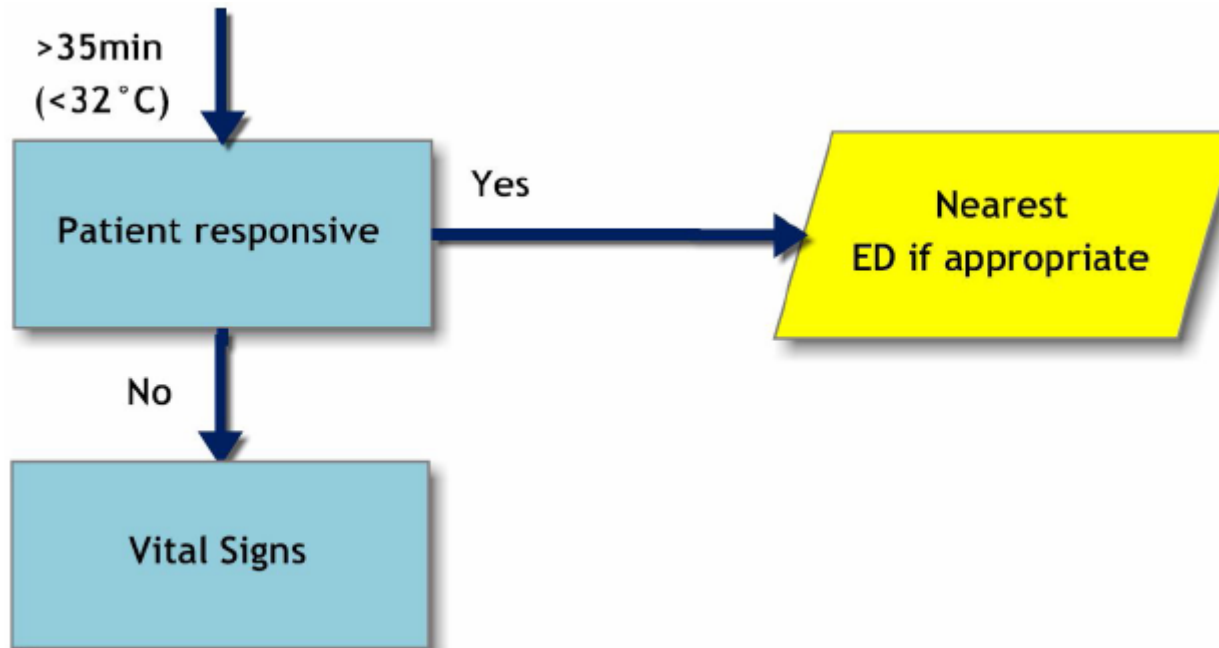


# ICAR MEDCOM recommendations 2011



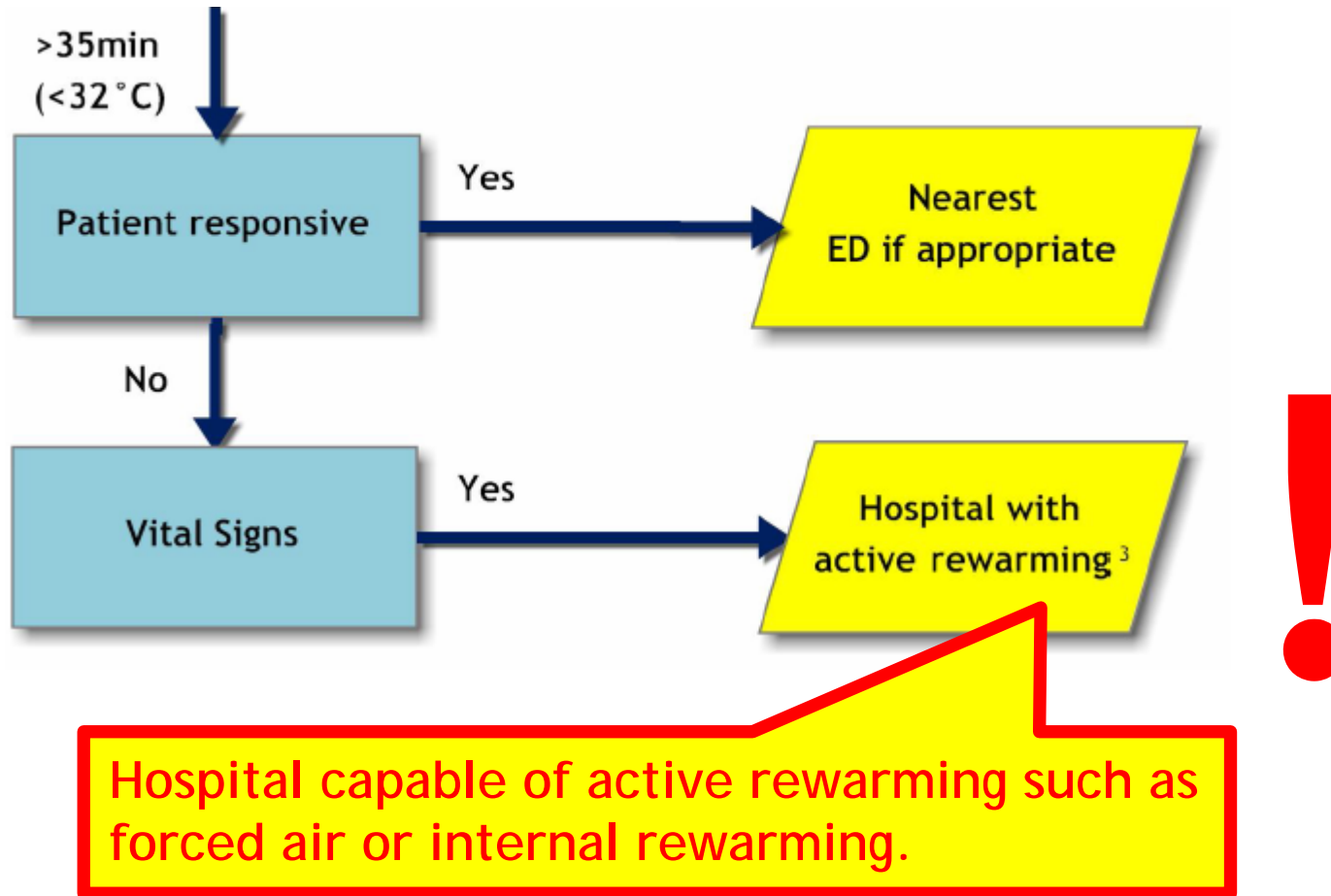


## ICAR MEDCOM recommendations 2011



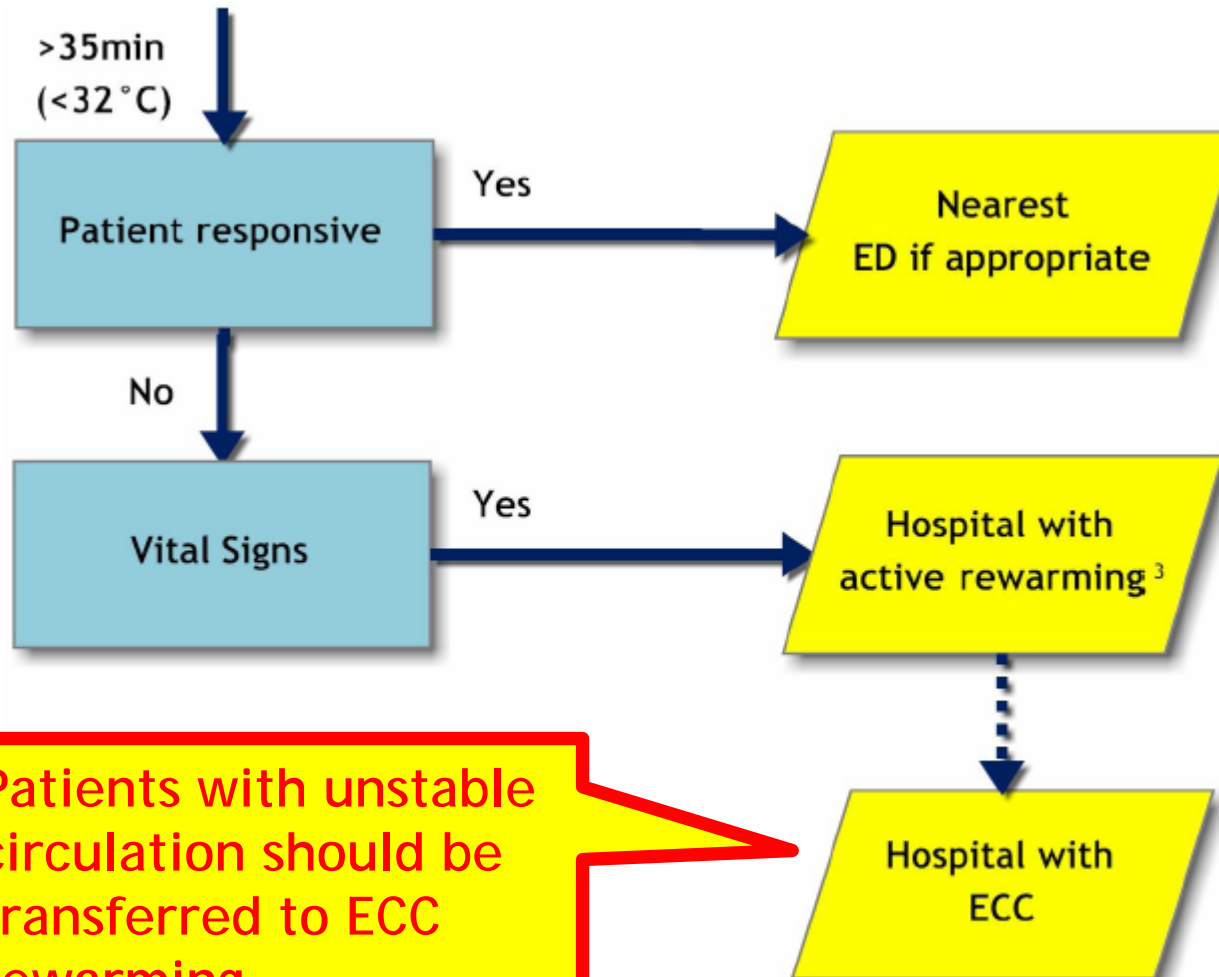


# ICAR MEDCOM recommendations 2011





# ICAR MEDCOM recommendations 2011

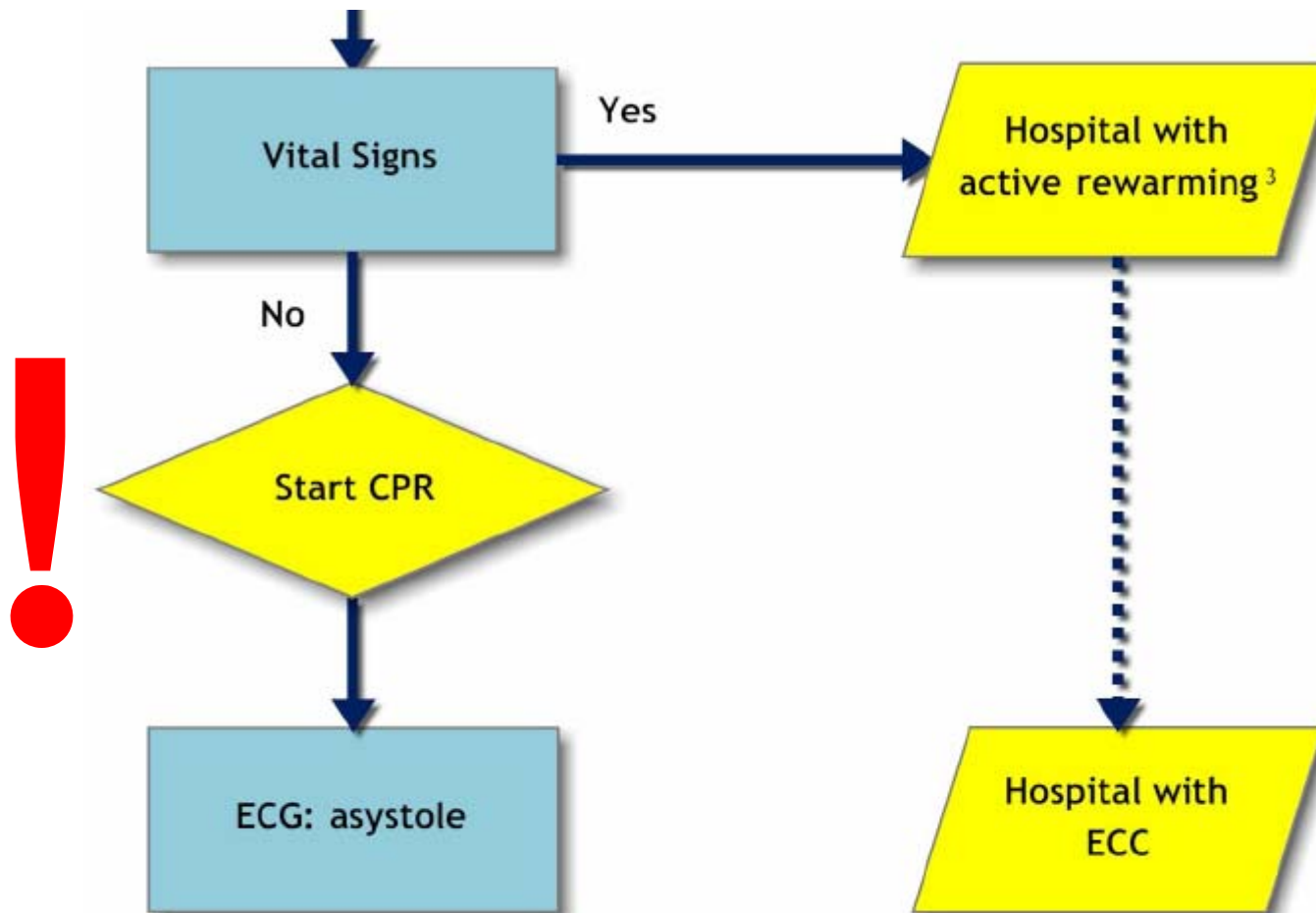


Patients with unstable circulation should be transferred to ECC rewarming.



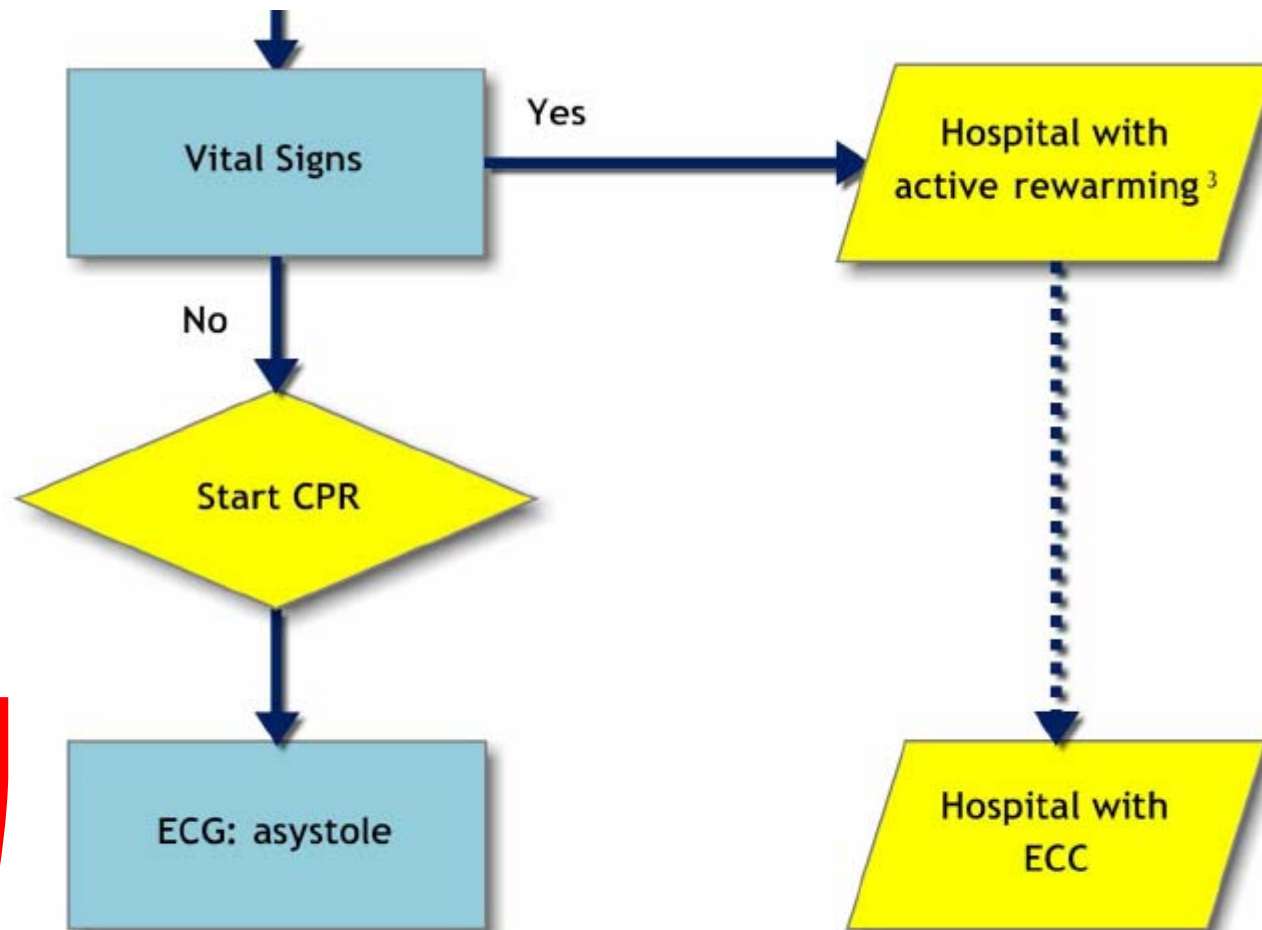


# ICAR MEDCOM recommendations 2011



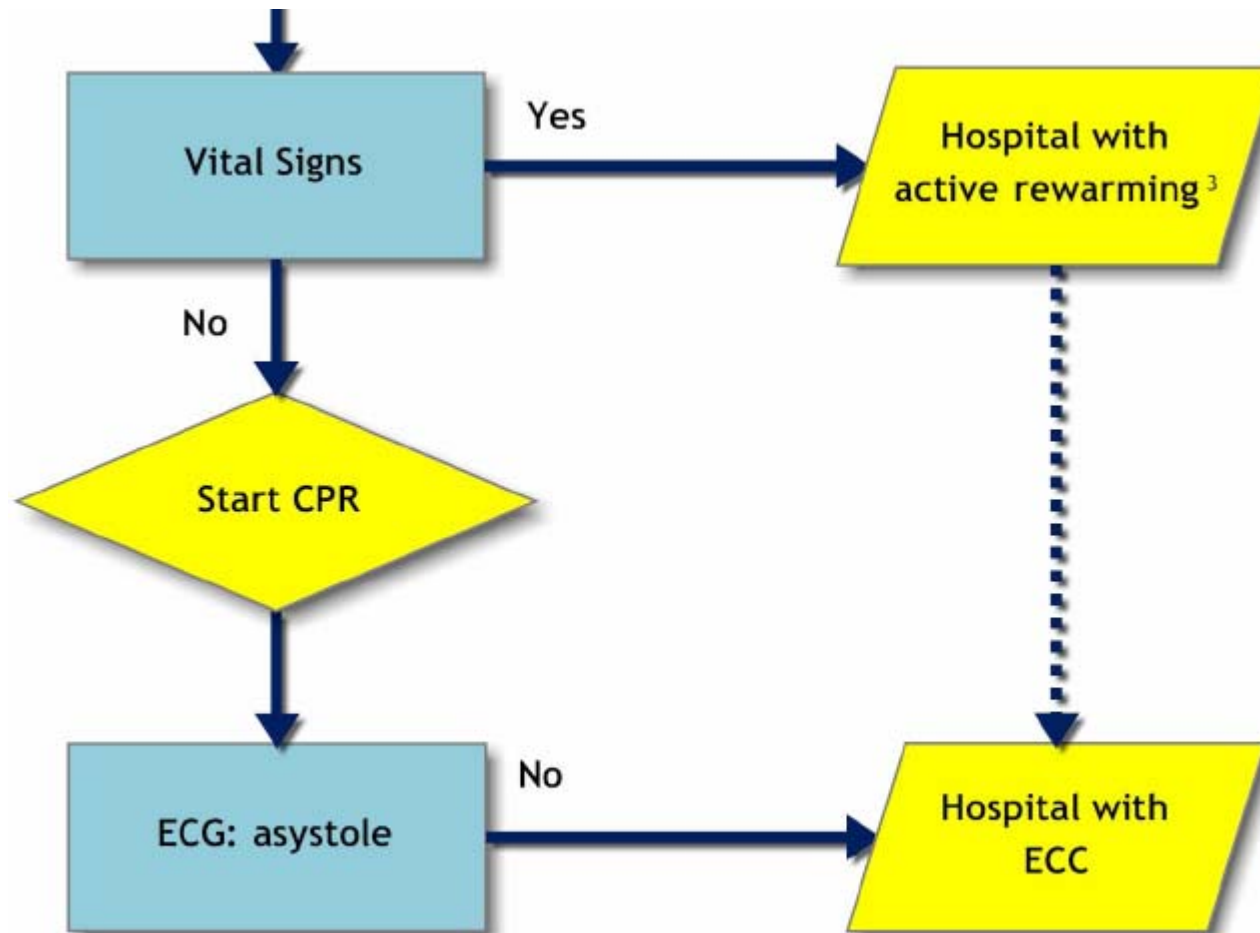


# ICAR MEDCOM recommendations 2011



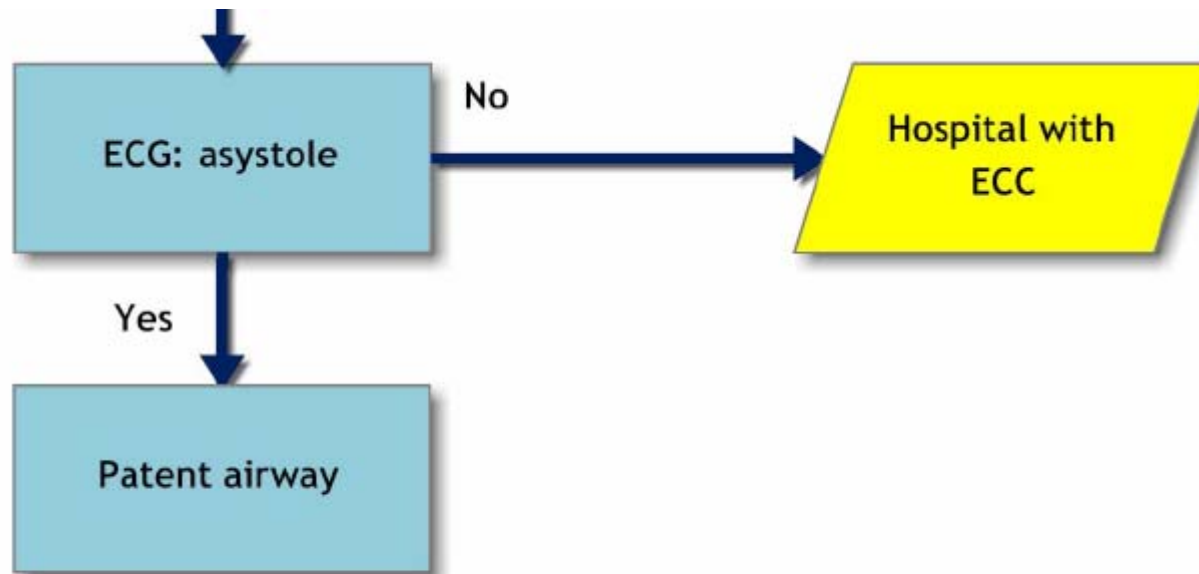


# ICAR MEDCOM recommendations 2011



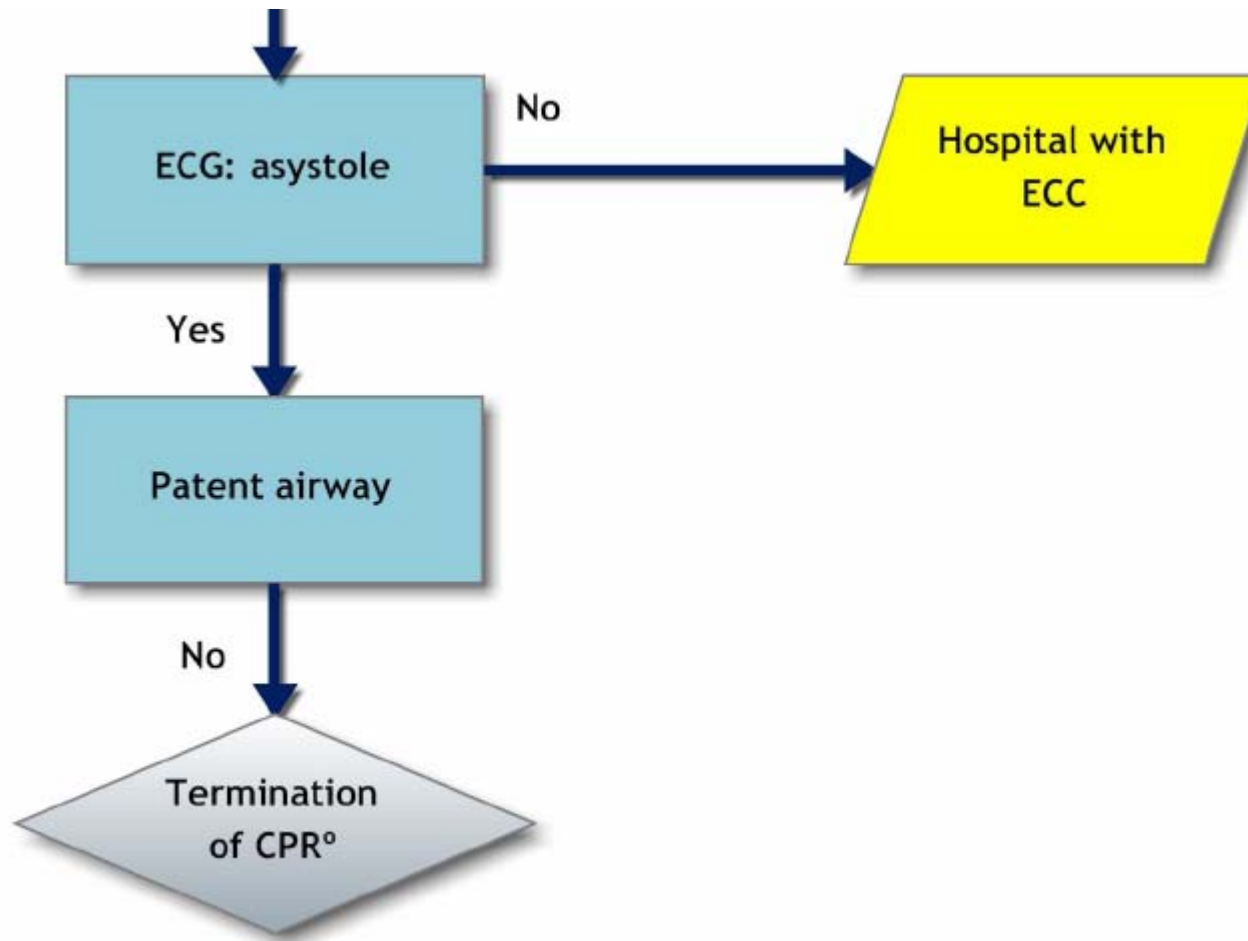


# ICAR MEDCOM recommendations 2011



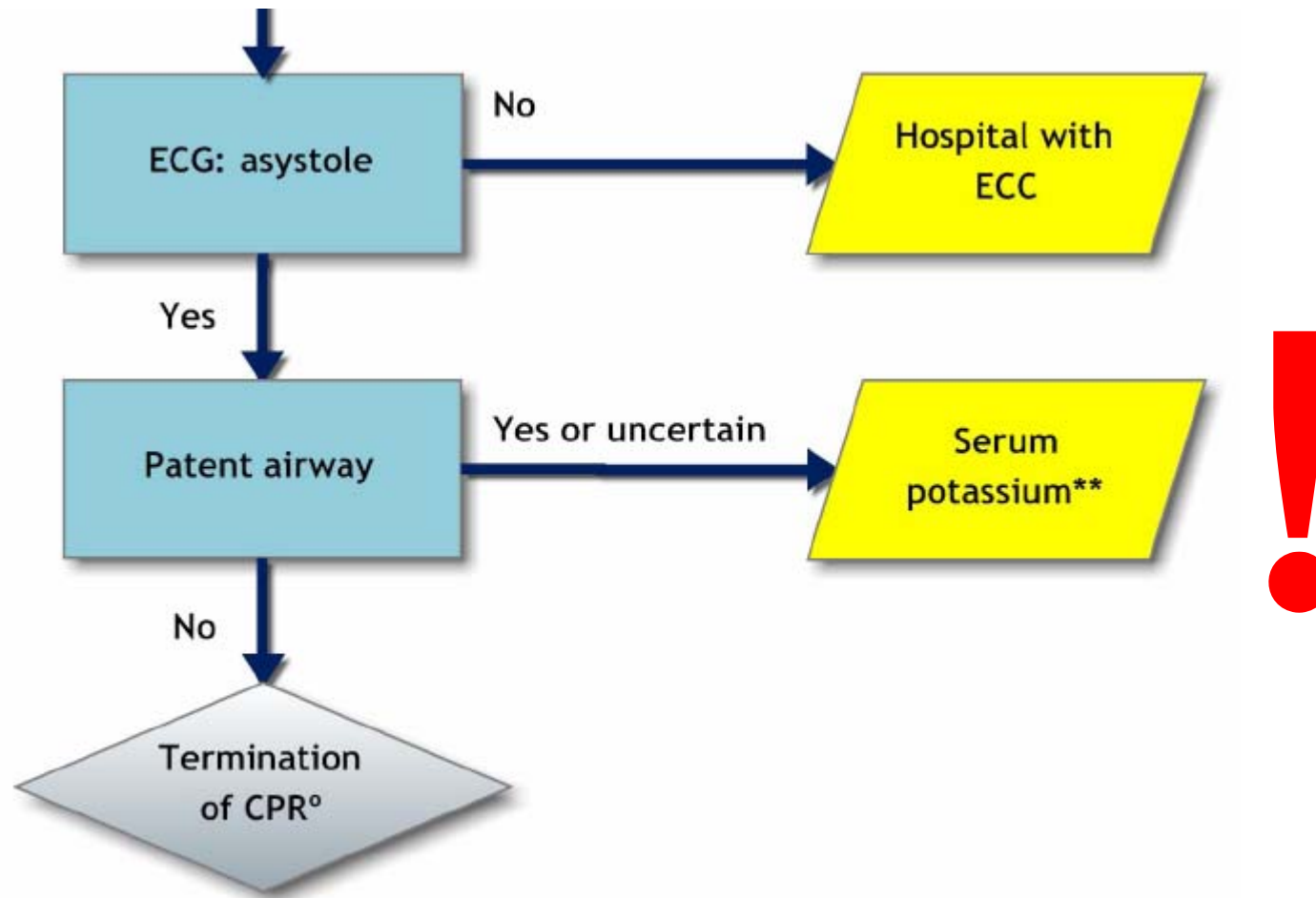


# ICAR MEDCOM recommendations 2011



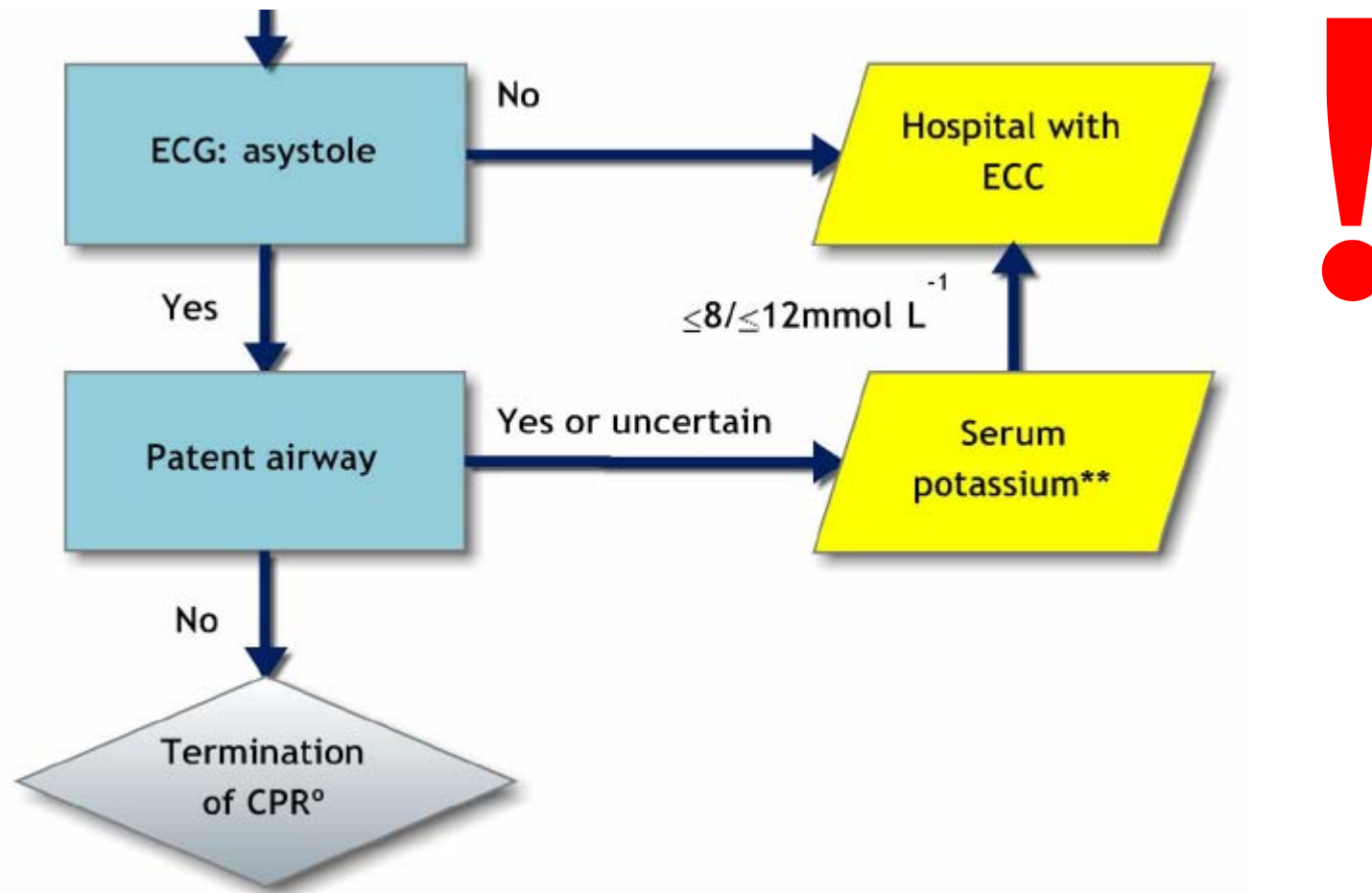


# ICAR MEDCOM recommendations 2011



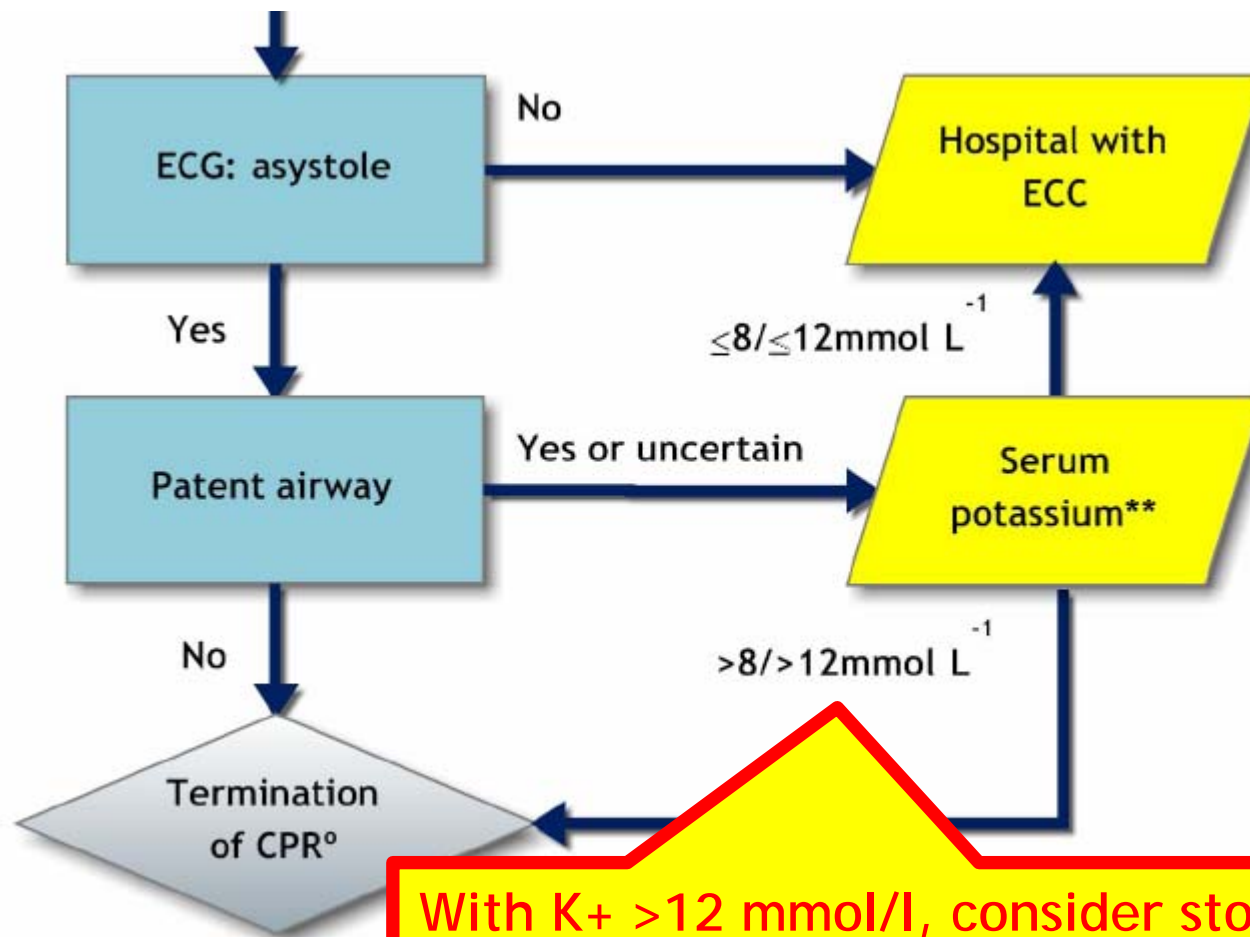


# ICAR MEDCOM recommendations 2011





# ICAR MEDCOM recommendations 2011



With  $K^+ > 12 \text{ mmol/L}$ , consider stopping resuscitation;  
in an adult with  $K^+ > 8 \text{ mmol/L}$  CPR may be

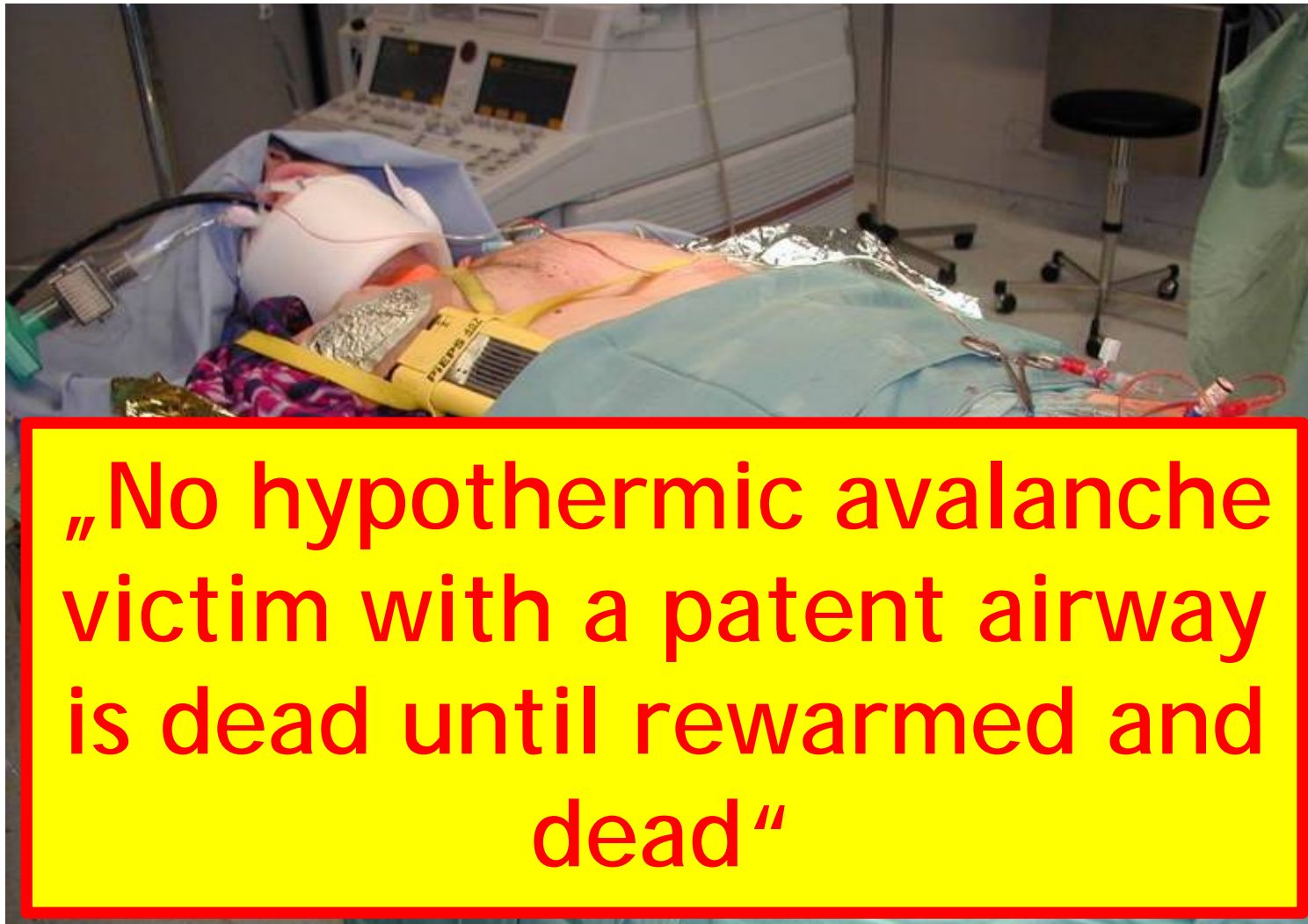


# ICAR MEDCOM recommendations 2011



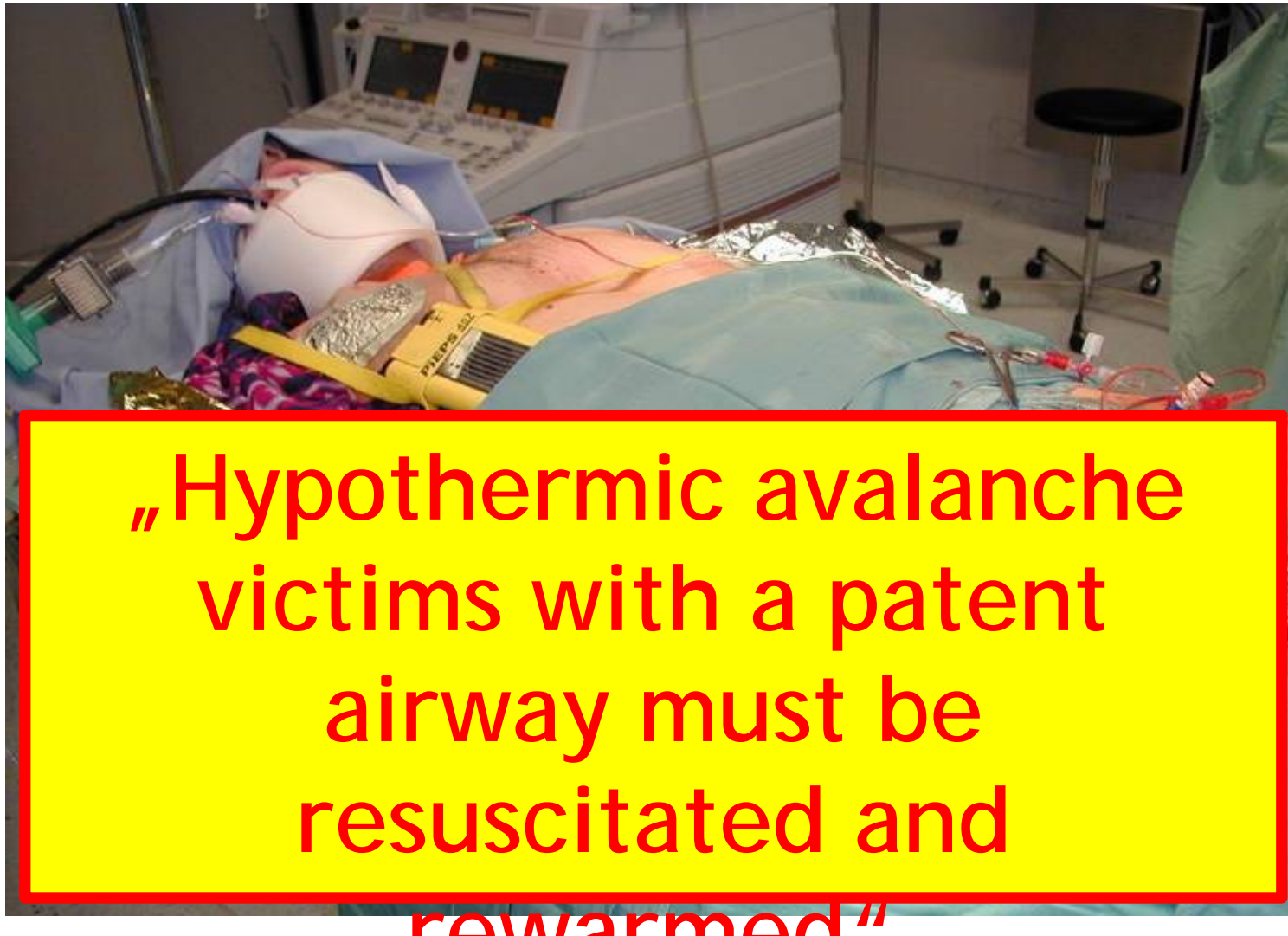


## ICAR MEDCOM recommendations 2011






## ICAR MEDCOM recommendations 2011



„Hypothermic avalanche victims with a patent airway must be resuscitated and rewarmed“



A photograph of a snowy mountain landscape. In the foreground, there is a vast, flat expanse of snow. In the middle ground, two small figures of people are visible on the right side, and a yellow vehicle is partially visible on the left. The background features a range of snow-covered mountains under a clear blue sky. A yellow rectangular box with a red border is superimposed over the lower half of the image, containing text.

Thanks to the writing group  
Jeff Boyd (CAN)  
Peter Paal (A)  
and all  
ICAR MEDCOM fellows







