

Avalanche hazard prevention and control above highly frequented places and settlements in Slovakia

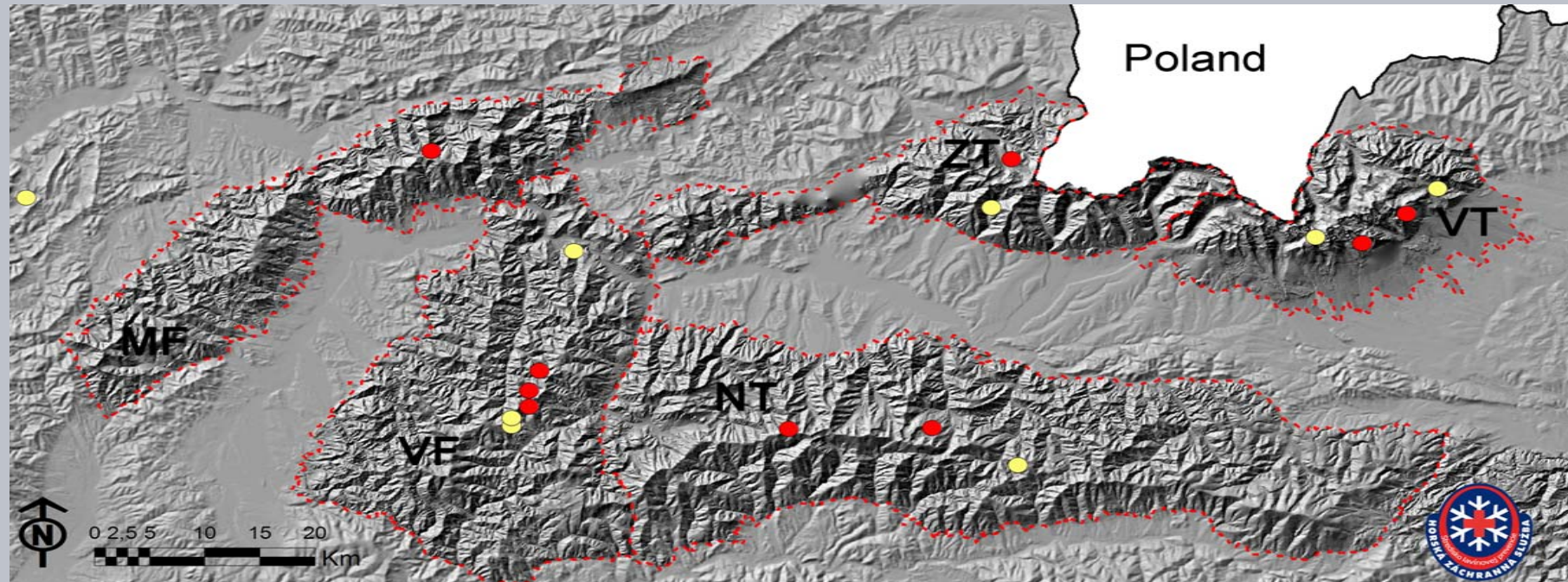


Kliknite sem a upravte štýl predlohy podnadvpisov.



Aims

- Describe strategies, applied to mitigate the avalanche hazard above frequented places
- Introduce areas where avalanche hazard prevention is necessary
- Avalanche control by explosives



www.avaianches.sk

● **Frequented places affected by avalanches**

● **Avalanche control with explosives**

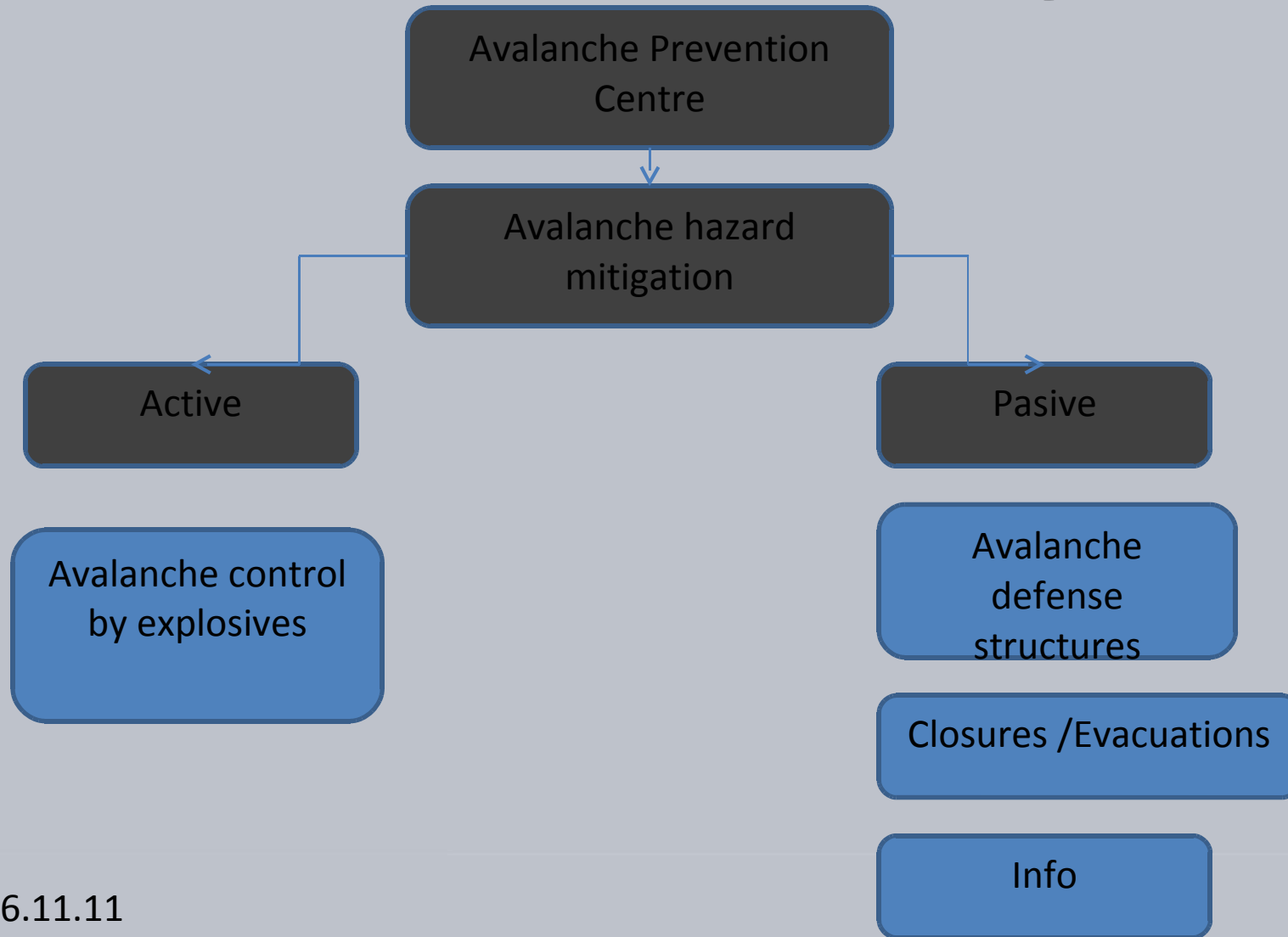
Mountain areas:

VT - Vysoké Tatry, ZT - Západné Tatry

NT - Nízke Tatry, MF - Malá Fatra, VF - Veľká Fatra

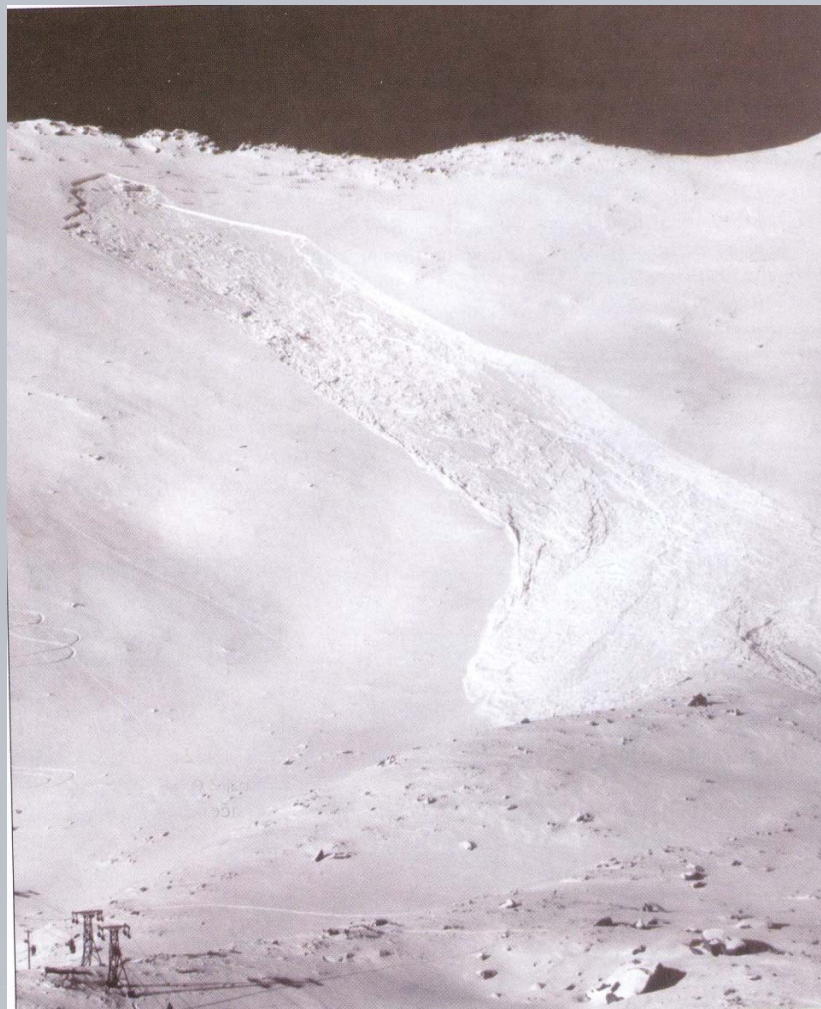


Avalanche hazard mitigation



Lomnické sedlo – High Tatras

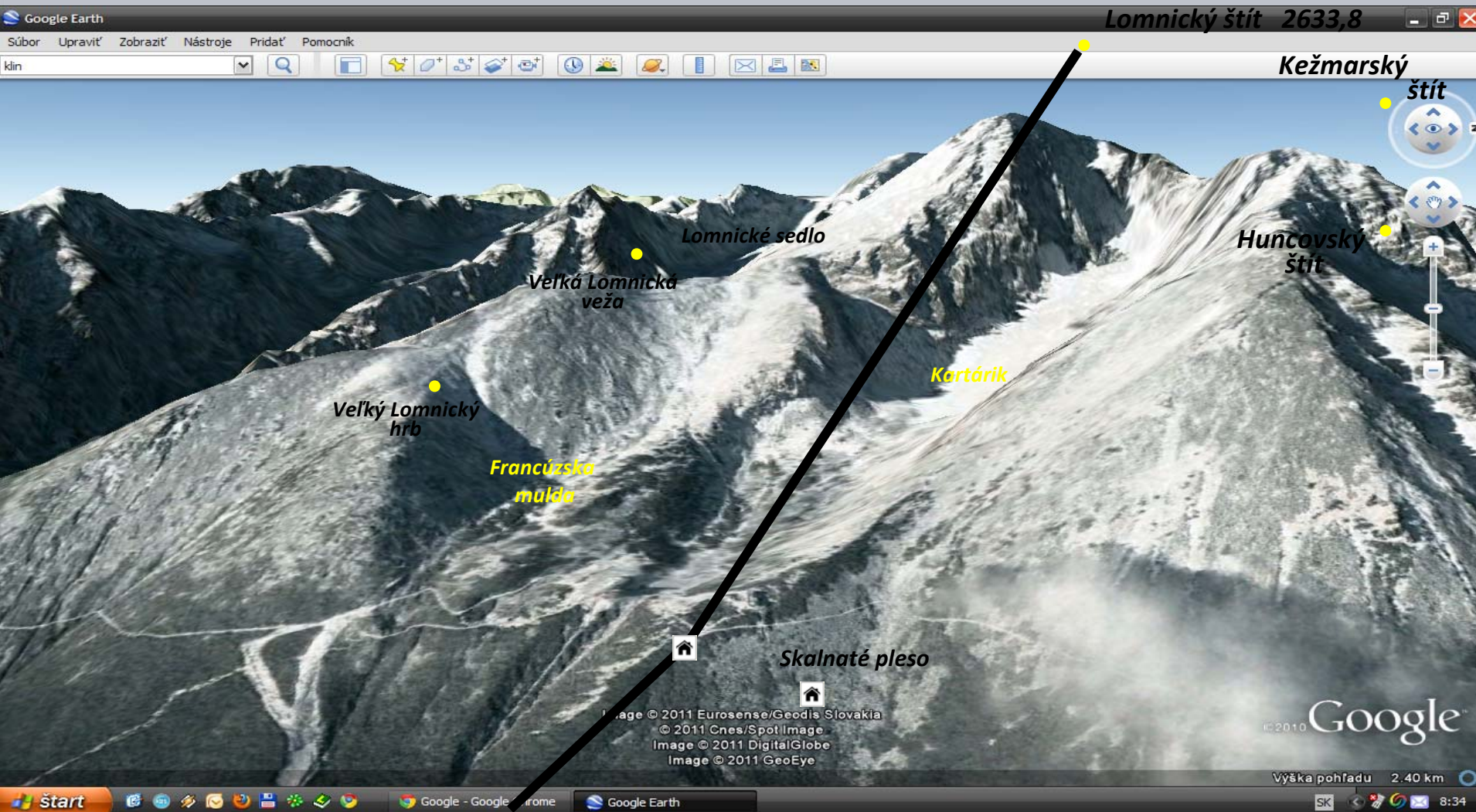
- Frequently visited ski resort, off piste skiing
- High altitude resort, long ski season
- 1958 - avalanche accident, 4 fatalities
- Avalanche control:
 - snow defense structures
 - artificial avalanche

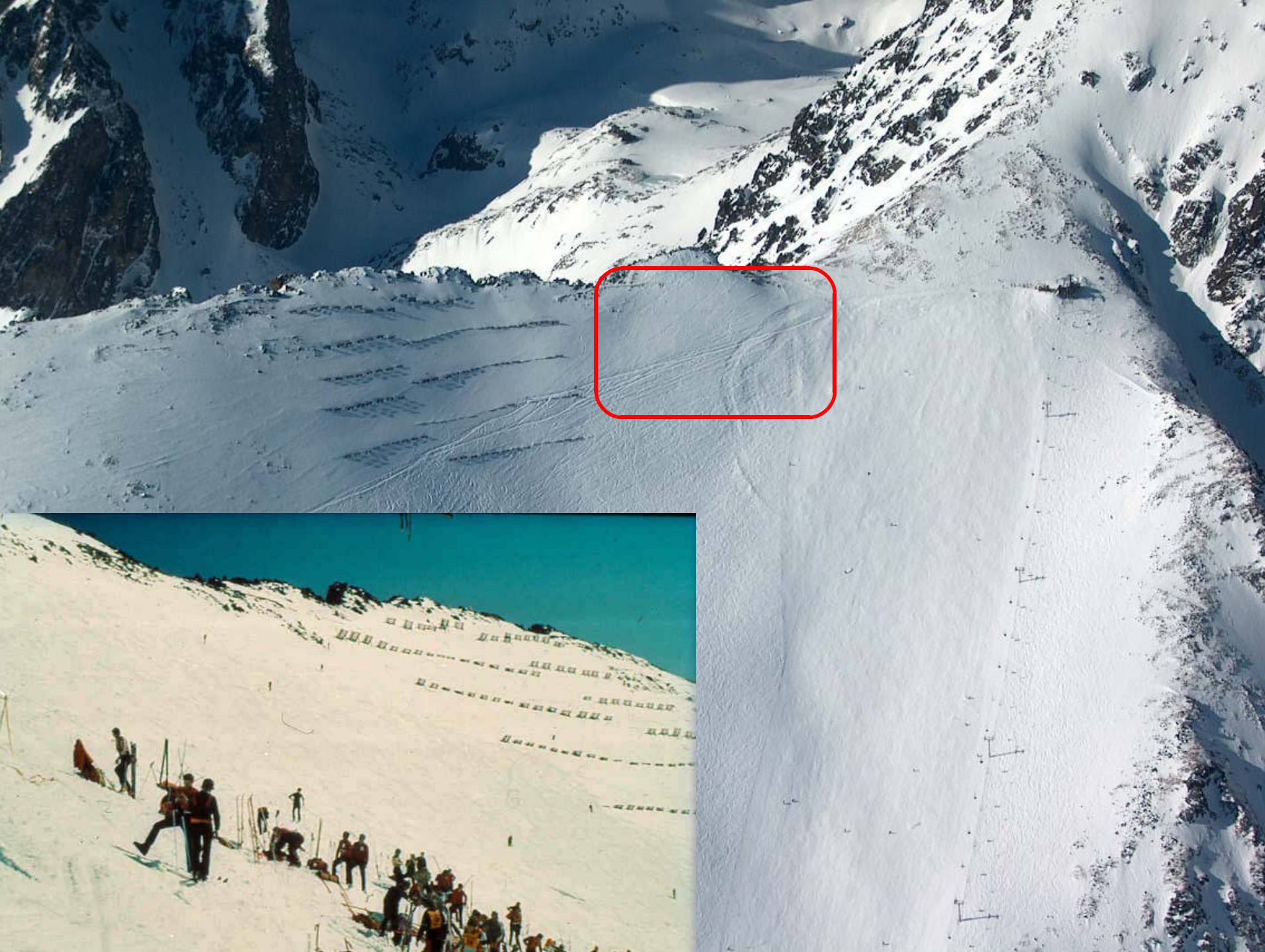


16.11.11



Lomnické sedlo – High Tatras



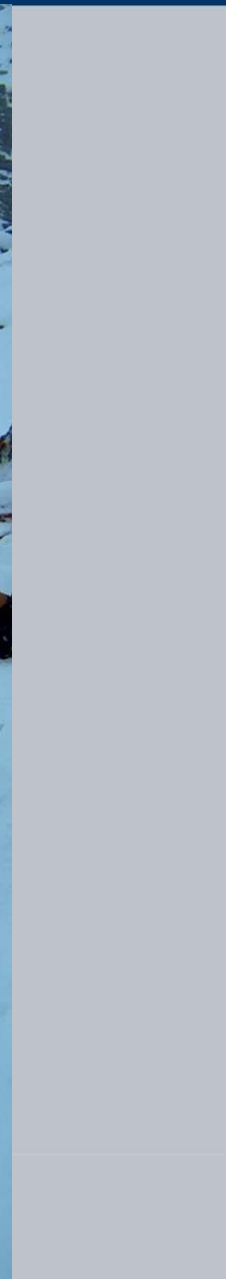




Avalanche control with explosives

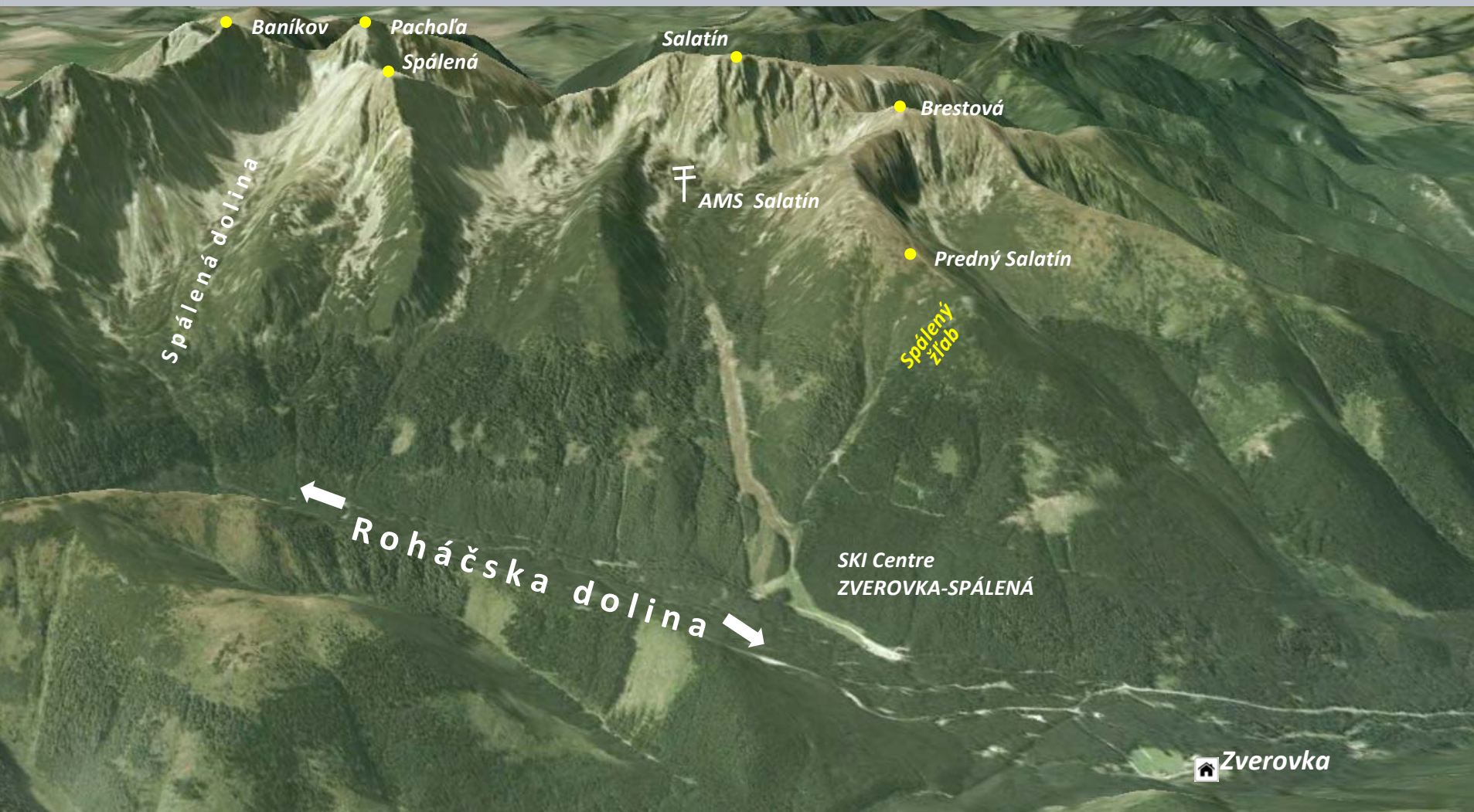
- Plastic explosives (Danubite, Austrojel)
- Electro detonator, roving
- Velocity of detonation min. 6000 m.s⁻¹
- Explosion temperature min. 3130 °C
- Impact sensitivity min. 3.5 J







Zverovka – Western Tatras



Zverovka – Western Tatras



- Opfer
- Übertebender

16.11.1

Jasná – Low Tatras



16.11

Jasná – Low Tatras



16.11.

Jasná – Low Tatras

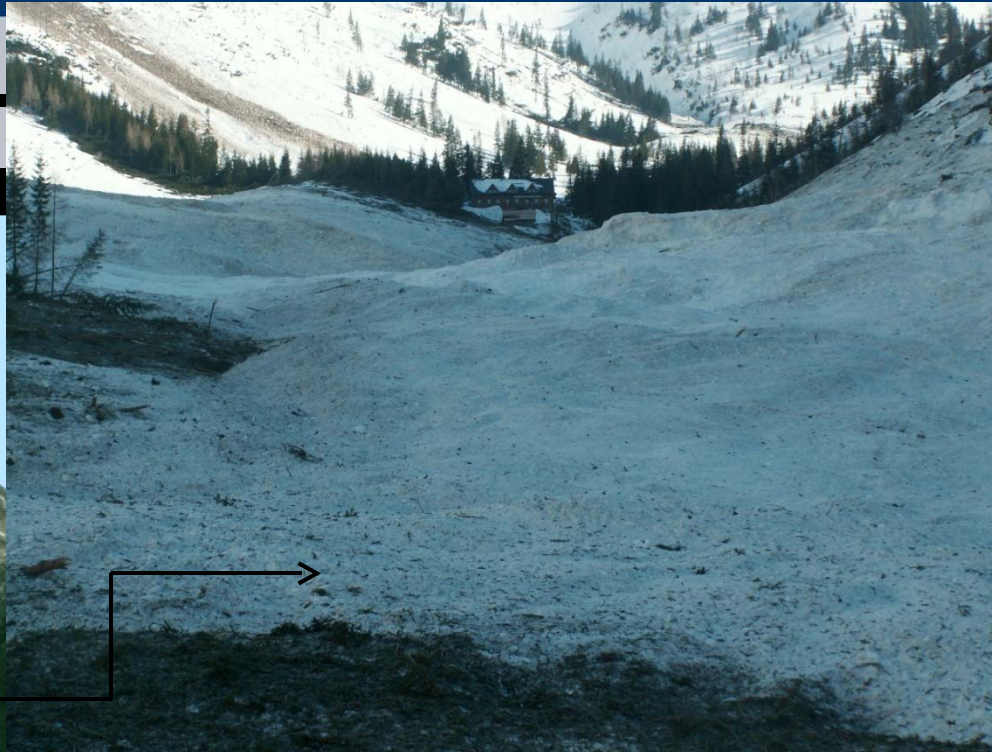


16.11.2011

Jasná – Low Tatras








Žiarska valley



North American Public Avalanche Danger Scale

Avalanche danger is determined by the likelihood, size and distribution of avalanches.

Danger Level	Travel Advice	Likelihood of Avalanches	Avalanche Size and Distribution
5 Extreme	 Avoid all avalanche terrain.	Natural and human-triggered avalanches certain.	Large to very large avalanches in many areas.
4 High	 Very dangerous avalanche conditions. Travel in avalanche terrain <u>not</u> recommended.	Natural avalanches likely; human-triggered avalanches very likely.	Large avalanches in many areas; or very large avalanches in specific areas.
3 Considerable	 Dangerous avalanche conditions. Careful snowpack evaluation, cautious route-finding and conservative decision-making essential.	Natural avalanches possible; human-triggered avalanches likely.	Small avalanches in many areas; or large avalanches in specific areas; or very large avalanches in isolated areas.
2 Moderate	 Heightened avalanche conditions on specific terrain features. Evaluate snow and terrain carefully; identify features of concern.	Natural avalanches unlikely; human-triggered avalanches possible.	Small avalanches in specific areas; or large avalanches in isolated areas.
1 Low	 Generally safe avalanche conditions. Watch for unstable snow on isolated terrain features.	Natural and human-triggered avalanches unlikely.	Small avalanches in isolated areas or extreme terrain.

Safe backcountry travel requires training and experience. You control your own risk by choosing where, when and how you travel.





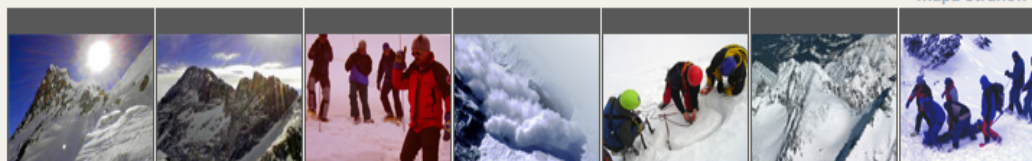


portál Horskéj záchrannéj služby
venovaný lavinovej problematike

Vyhľadávanie:

Hľadaj

mapa stránok



Novinky

Počasie & podmienky

Metodika

Pozorovania

Články

Fotogaléria

O nás & kontakty

Fotogaléria

Albomy

Filter

Najnovšie (15)

Všetky (208)

Horolezectvo (3)

Lavíny (76)

Počasie a sneh (131)

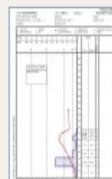
Projekty a konferencie (24)

Skialpinizmus (8)

Školenia a semináre (27)

Záchranné akcie (20)

Snehové profily a testy stability snehovej pokrývky od 4. do 11. marca 2011



Vysoké Tatry, Skalnaté pleso, 9.3.2011



Vysoké Tatry, Lomnické sedlo, 10.3.2011



Vysoké Tatry, Pod Kresaným rohom, 8.3.2011

Predchádzajúce | 1 | Nasledujúce

späť k albumom



Aktuálne informácie z hôr

Stupeň lavinového nebezpečenstva ku dňu 6.6.

- Vysoké Tatry 0/0
- Západné Tatry 0/0
- Nízke Tatry 0/0
- Veľká Fatra 0/0
- Malá Fatra 0/0

kompletná informácia o lavinovej situácii

5-dňový vývoj

Podmienky na horách

Počasie

Predpoveď počasia

Výstrahy HZS

Pridajte informáciu o pozorovaní lavíny

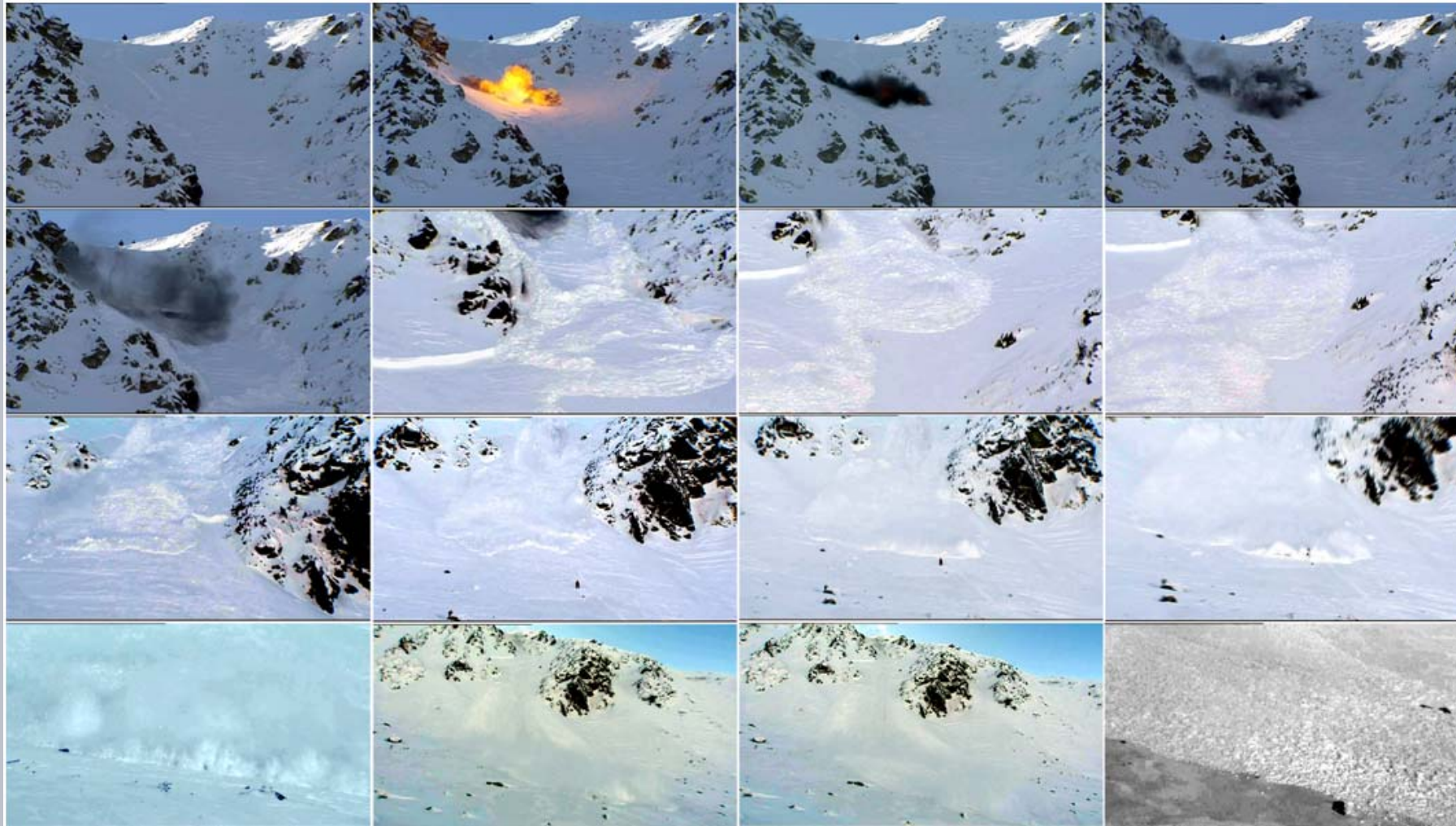
Meteostanice HZS

- Jasná
- Ladové pleso
- Solisko
- Hrubá kopa
- Salatín
- Žiarska chata





IKAR conference 2011, Åre, Sweden



16.11.11



Thank you for your attention

Vielen Dank für Ihre Aufmerksamkeit

Merci pour votre attention