



EMERGENCY RESCUE PLANS

Bob Sayer

EMERGENCY RESCUE PLAN

- Defined roles and responsibilities
- Pre-set procedures
- Checklists and callout lists
- Nothing missed
- Reduce decision-making under pressure





Mike Wiegele
Helicopter Skiing

OPERATIONS



RESCUE CLASSIFICATION

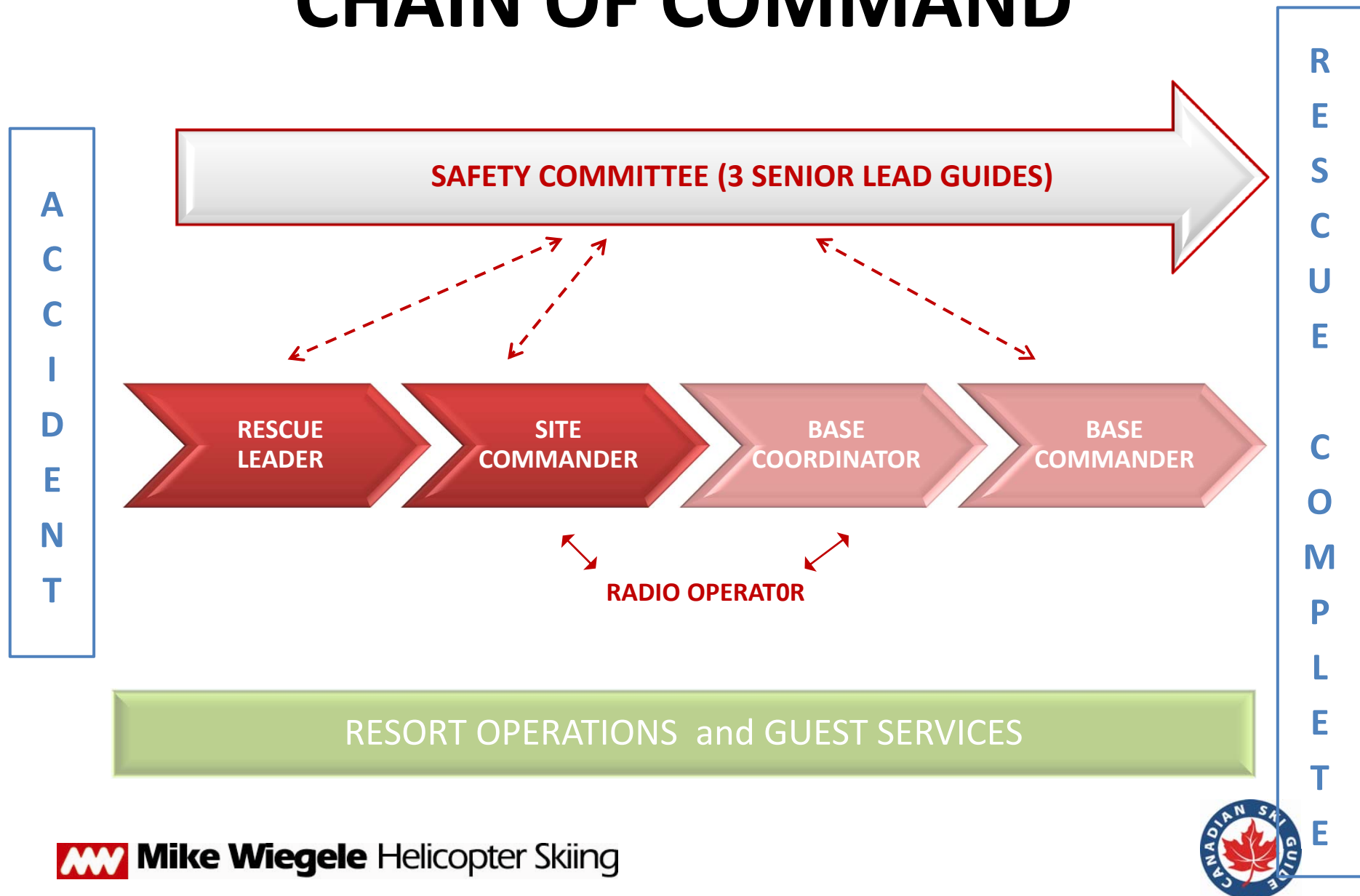
Type 1: Managed by guide on site

Type 2: Guide needs assistance / helicopters

Type 3: Major incident, requires external support

Type 4: Helicopter is overdue / missing

CHAIN OF COMMAND



RESCUE LEADER

Directs Rescue On Site

First Guide on Scene

- Assesses, classifies, communicates
- Determines rescue techniques
- Deploys people / equipment
- Tracks progress
- Reports to Site Commander



SITE COMMANDER

Coordinates Logistics On Site

Second Senior Guide on scene

- Staging / triage areas
- Provides and tracks resources
- Evacuates as required
- Communicates between RL and Base
- Demobilization



BASE COORDINATOR

Administrates at Base

Senior Management Staff

- Follows ERP checklist for “Type” of rescue
- Coordinates personnel / equipment at base



BASE COMMANDER

Directs Base Operations

Senior Lead Guide

- Supports SC
- Anticipates rescue needs
- Coordinates external resources
- Prepares for accident investigation



SAFETY COMMITTEE

Responsible for Rescuer Safety

3 Senior Lead Guides

- External oversight – not part of rescue
- Will stop a rescue for safety concerns
- Shared responsibility for decision



5 KEYS TO SUCCESS

1. Designate roles based on skills
2. Train 3 alternates for each position
3. Conduct frequent organization-wide practices (5 times minimum)
4. Ensure external oversight
5. Review, debrief and revise



QUESTIONS?

Bob Sayer

President, CSGA

Senior Lead Guide, Operations Manager

Mike Wiegele Helicopter Skiing

bsayer@wiegele.com

