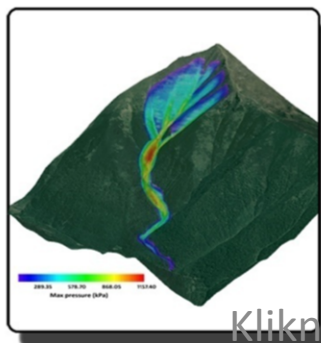




## *Avalanche run-out modelling and its future perspectives for mountain rescue in Slovakia*



Kliknite sem a upravte štýl predlohy podnadpisov.





IKAR conference 2010, Starý Smokovec, Vysoké Tatry, Slovakia



17.10.10





IKAR conference 2010, Starý Smokovec, Vysoké Tatry, Slovakia



# Avalanche run-out modelling

2 approaches: statistical

numerical

Aim: simulate avalanche behavior

estimate run-outs

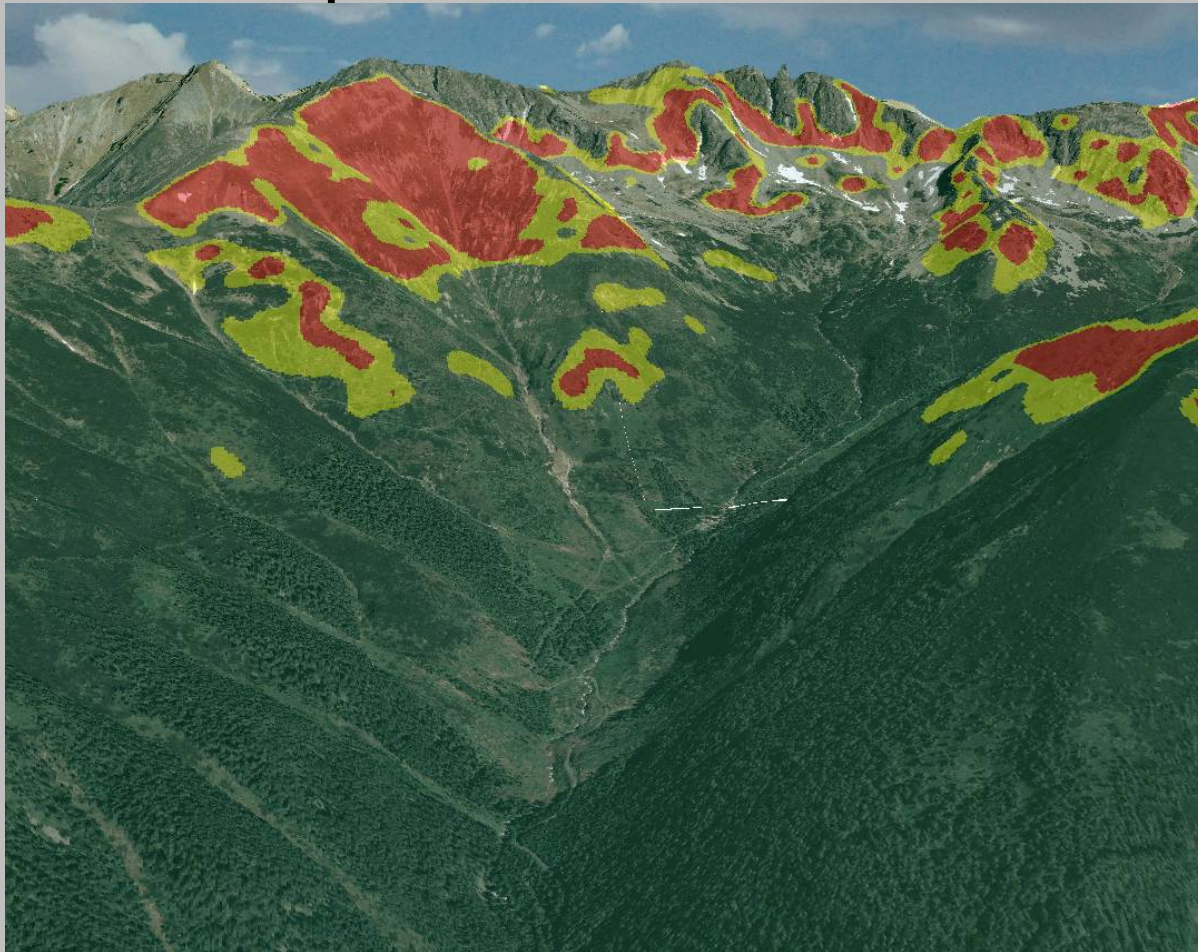




- Avalanche hazard maps
- Decrease risk exposure of rescuers
- Optimize rescue operations strategy in avalanche prone areas
- Mitigate avalanche hazard in settlements

# Avalanche simulations-basic steps

- Estimate the potential release areas



17.10.10



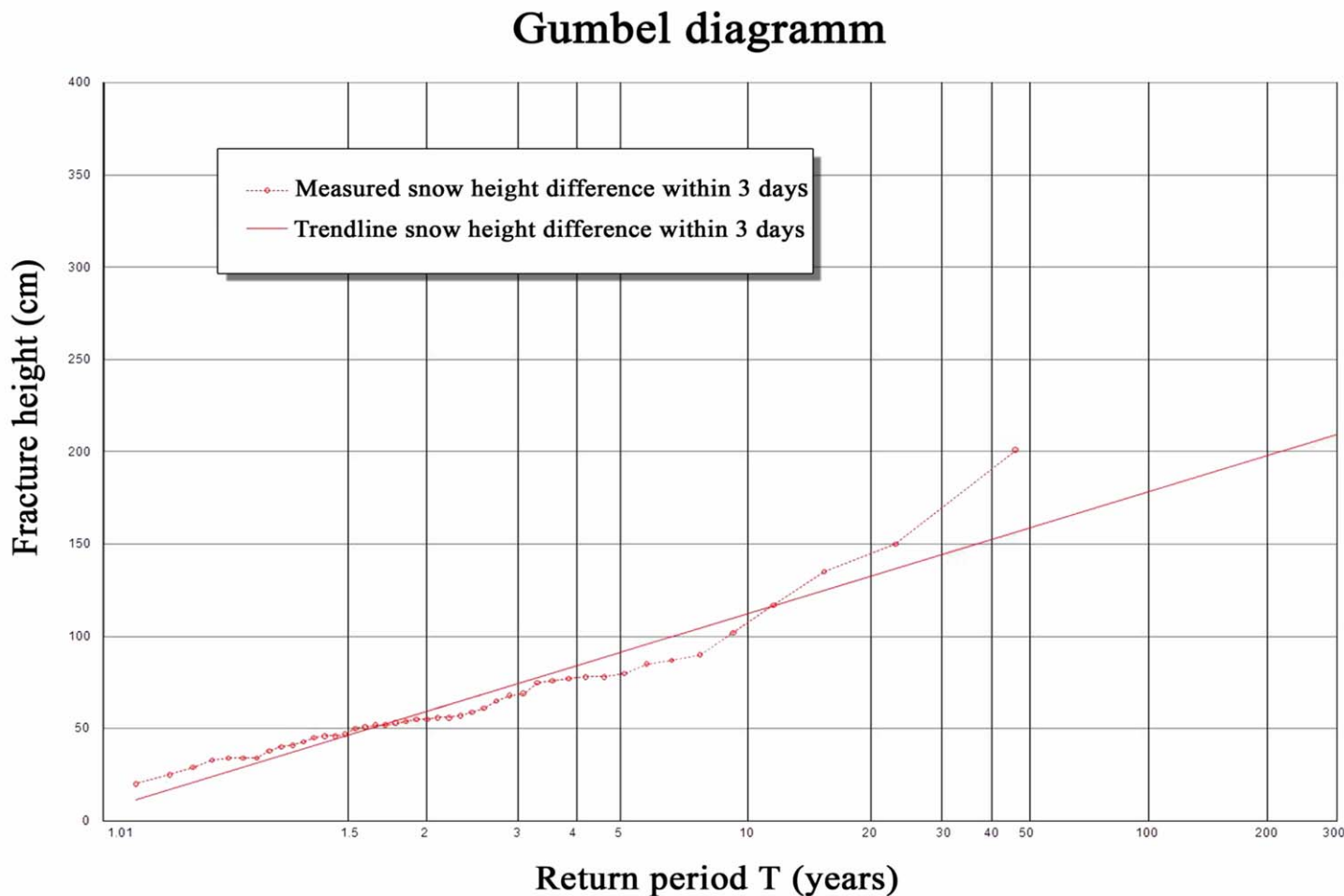
IKAR conference 2010, Starý Smokovec, Vysoké Tatry, Slovakia






# Avalanche simulations-basic steps

- Estimate the mean crown height value

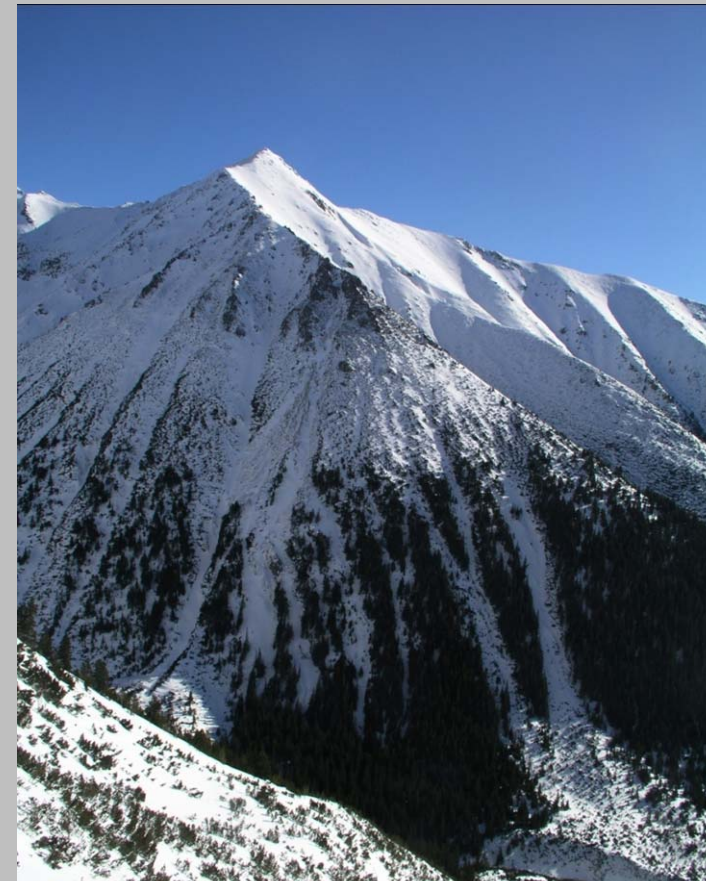


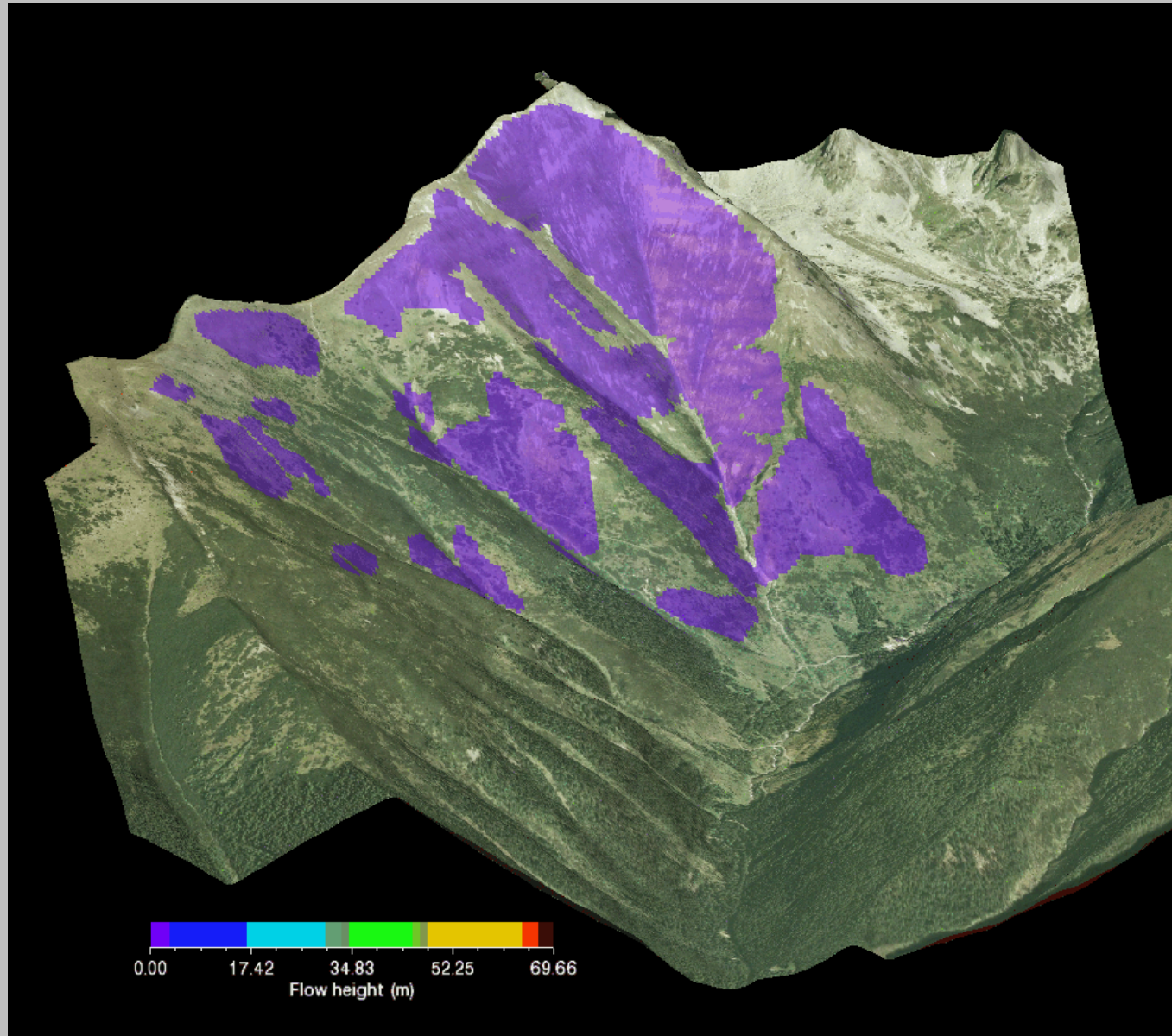
# Avalanche simulations-basic steps

- Landcover analyses  friction parameters



17.10.10

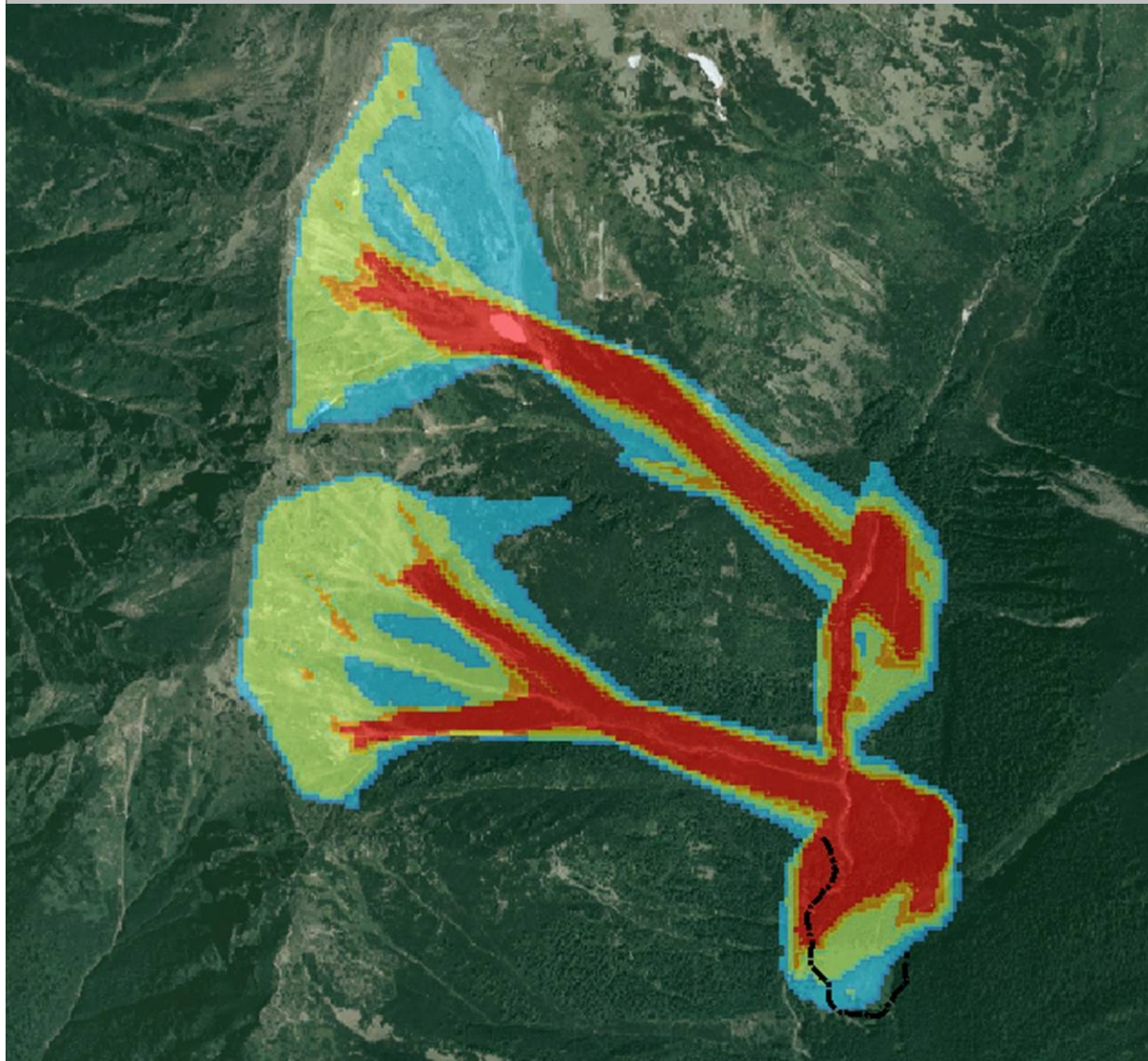




17.10.10



# Avalanche simulations





IKAR conference 2010, Starý Smokovec, Vysoké Tatry, Slovakia



**Prelet - Žiarska Dolina**



## Conclusion

- Run-out modelling – valuable tool for creating and updating avalanche hazard maps
- Avalanche hazard maps uploaded to GPS receiver – risk reduction

**It is just a model !!!**



# Acknowledgments



Mountain Rescue Service / Centre for Avalanche Prevention



Faculty of Science, Charles University in Prague



Anna Pasek Foundation / WSL SLF Davos



Institute of Geoinformatics, Technical University in Ostrava