



OCVS organisation cantonale
relais des secours
kantonale wäliser
rettungsorganisation 144

CISA – IKAR 2008 Chamonix

Petit Clocher du Portalet 22.08.2008 Climbing Fall

Raphy Richard – Pat Fauchère



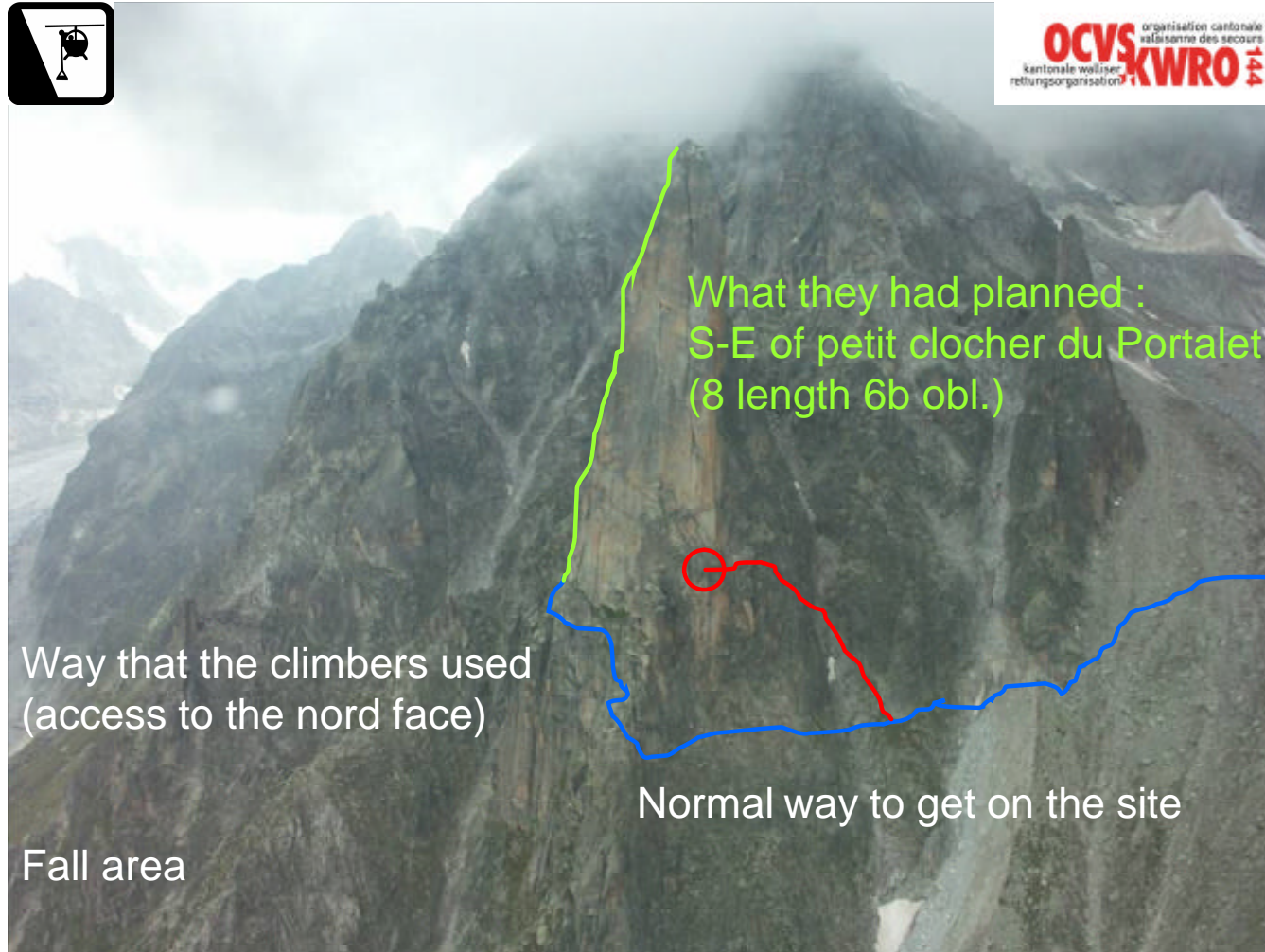


What they had planned :
S-E of petit clocher du Portalet
(8 length 6b obl.)

Way that the climbers used
(access to the nord face)

Normal way to get on the site

Fall area





What happened

After the fall (30m) of his friend, the second climber went down (rappelling) to the patient on the second rope

impossible to turn over the patient ??

- vertical cliff
- lack of material
- patient has probable head injury, talks but is struggling hard
- second climber is shocked
- Informations collected after the rescue



- When the accident occurred a mountain guide (MFXB) and his clients were on the glacier.
- Below the Orny Hut he could hear someone calling for help.
- He got a brief information that he transmitted to the rescue center 144 and went on site.

- « Fall in the S-E du Petit Clocher, one person is hanging in his harness, and he is conscious »



After 20 min of walk/running, the guide could hear the patient from the moraine approx. 100m nearby, but :

He passed the information to the crew which arrives from a previous mission at the Grd-Combin

- rescue is not in the S-E but on the first part between Nord face and the East face
- cliff is vertical even overhanging
- the person is conscious, he moves, but is hanging upside down about 40m over the ground



OCVS organisation cantonale
valaisanne des secours
kantonale wölliser
rettungsorganisation 144



The crew arriving from another mission fly by, saw the patient moving, with attempts to hold his head upside.

They picked up the guide on the ridge nearby where he had run, and stopped at the Orny Hut for preparation.



OCVS organisation cantonale
volontaire des secours
KWO kantonale wölliser
rettungsorganisation





280 m total
220 m from the relay
Summit altitude 2823 m





OCVS organisation cantonale
valaisanne des secours
kantonale wölliser
rettungsorganisation 144





Briefing at the Orny Hut

Problems

Due to rock fall it is too dangerous to have a drop area in the intervention axis

The guide on site evaluates the intervention as difficult. He knows that the crew is coming from the Grd Combin without technical material

Drill machine is not working

Call for a Lama with longline

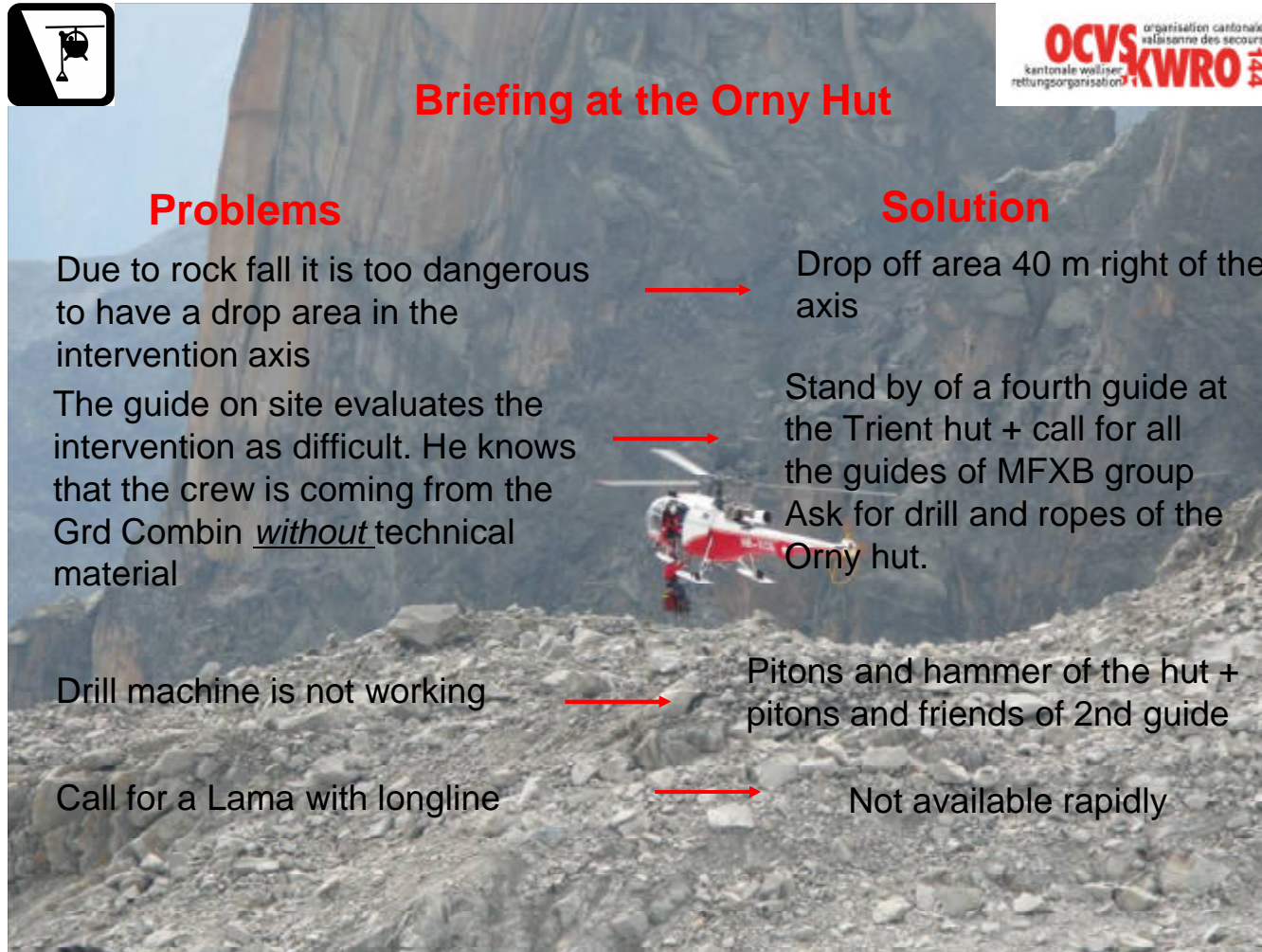
Solution

Drop off area 40 m right of the axis

Stand by of a fourth guide at the Trient hut + call for all the guides of MFXB group
Ask for drill and ropes of the Orny hut.

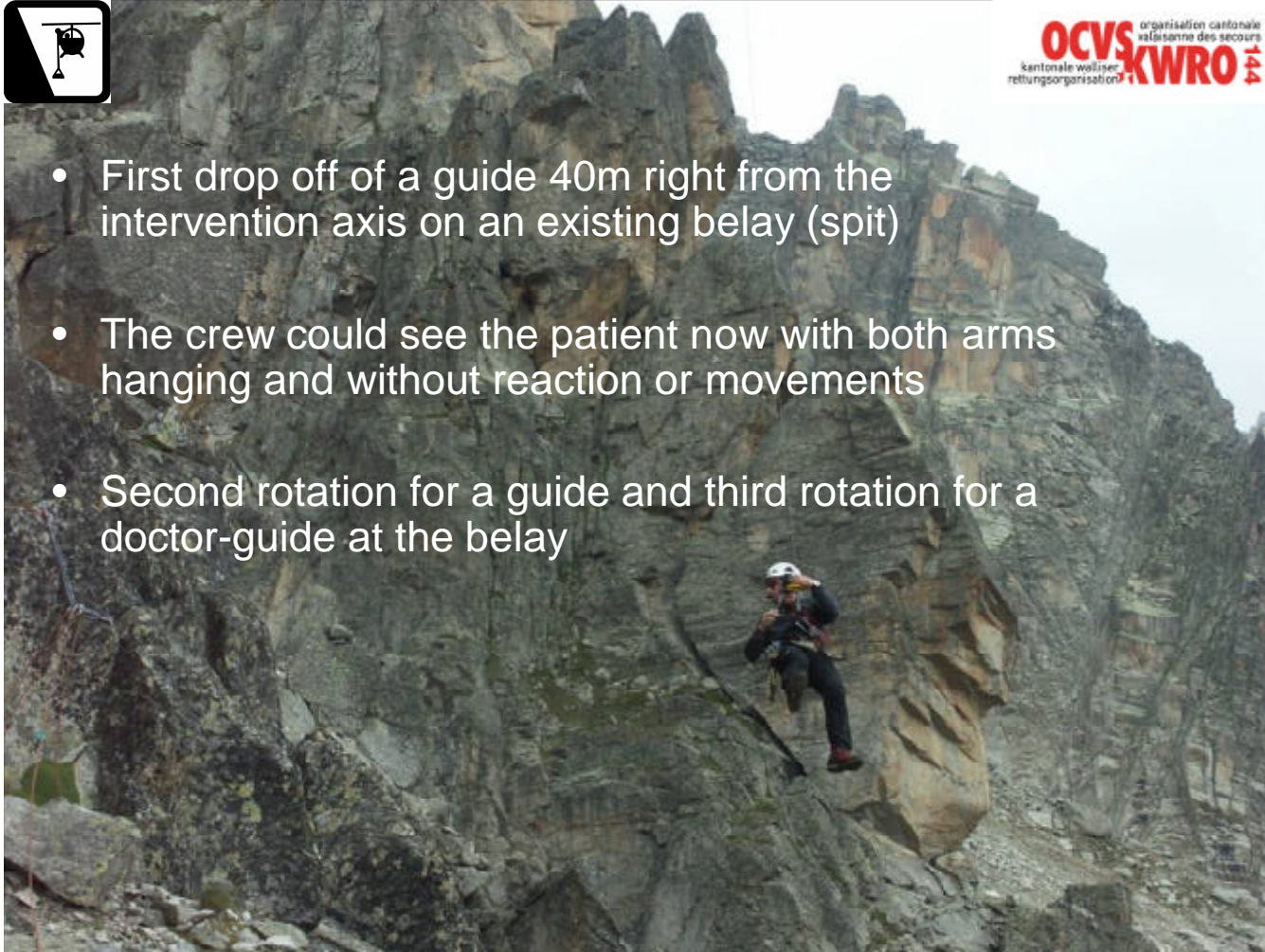
Pitons and hammer of the hut + pitons and friends of 2nd guide

Not available rapidly





- First drop off of a guide 40m right from the intervention axis on an existing belay (spit)
- The crew could see the patient now with both arms hanging and without reaction or movements
- Second rotation for a guide and third rotation for a doctor-guide at the belay





Terrain on the intervention axis

- easy (3) slight descend, very unstable
- some points already there as shelter

While progressing

- refuel of the helicopter down the valley and then after pick up of a fourth mountain guide at the Trient Hut.





OCVS
organisation cantonale
valaisanne des secours
kantonale wälder
rettungsorganisation





Access to the axis

Intervention Axis

Drop off area
(2 spits, on site)





1 piton

Belay

OCVS organisation cantonale
valaisanne des secours
kantonale wälder
rettungsorganisation
KWRO 144



Third belay friend

first friend of the belay

Friend of the
patient rope

Second belay friend



Belay assessment

Worries

- psy aspect : belay 4 points on 3 friends and 1 piton? We are 3 on them and we will add a 4th person by a rope cutting
- height of the cliff?
length of the ropes?
- ground : nature of terrain?
guide alone with patient ?
- Rock fall and rope rubbing

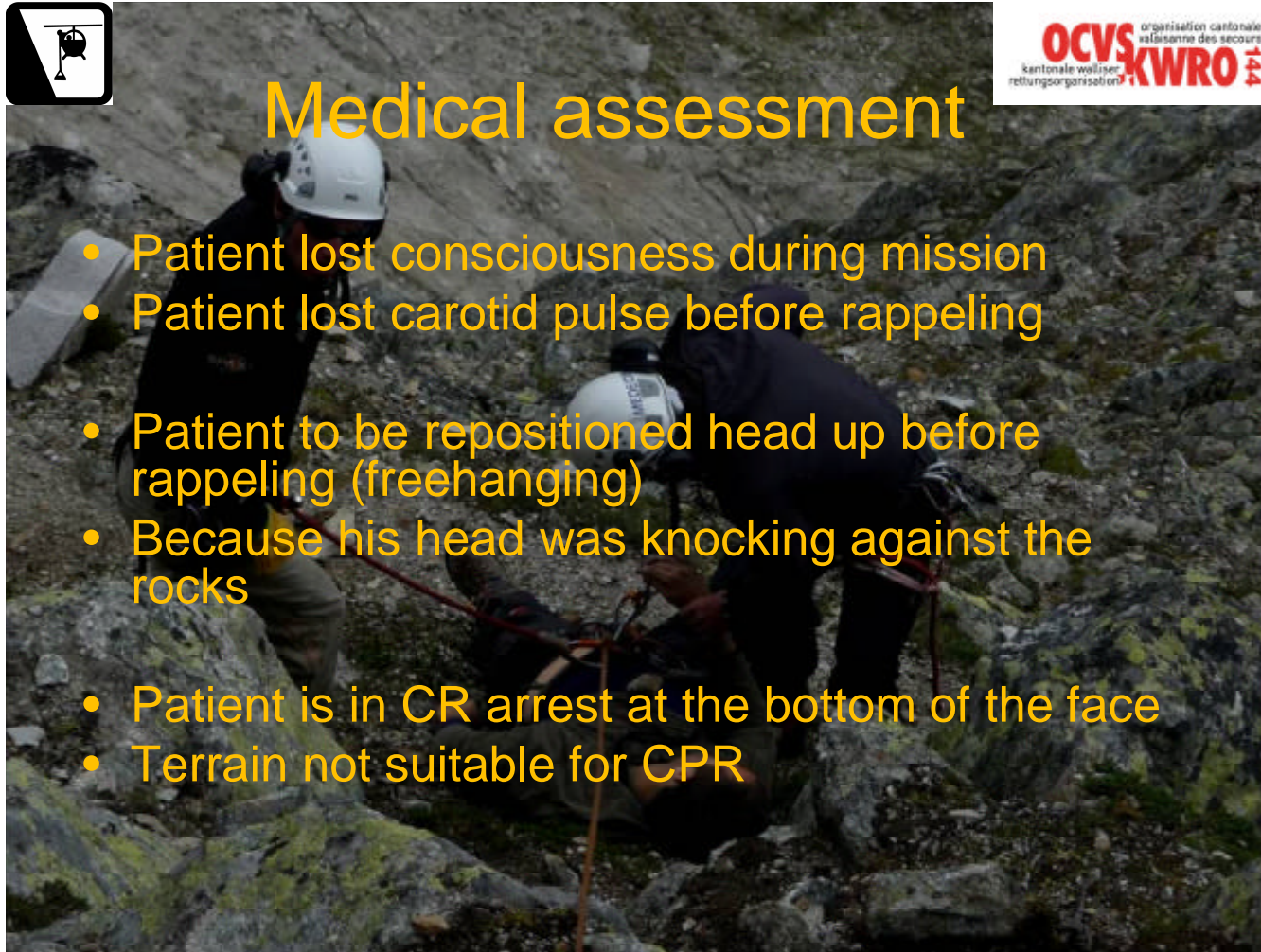
Solution

- check with other rescuers if OK for them
- enough ropes :
extension if necessary possible
- knowledge of terrain,
fourth guide will come when patient on ground
- terrain stable in the intervention axis,
double rope (1 stat, 1 dyn), no person underneath while rappelling



Medical assessment

- Patient lost consciousness during mission
- Patient lost carotid pulse before rappelling
- Patient to be repositioned head up before rappelling (freehanging)
- Because his head was knocking against the rocks
- Patient is in CR arrest at the bottom of the face
- Terrain not suitable for CPR





Aeronautical assessment

- Rock fall
- Wind and turbulence

OCVS organisation cantonale
volontaire
kantonale wölliser
rettungsorganisation
KWRO 144





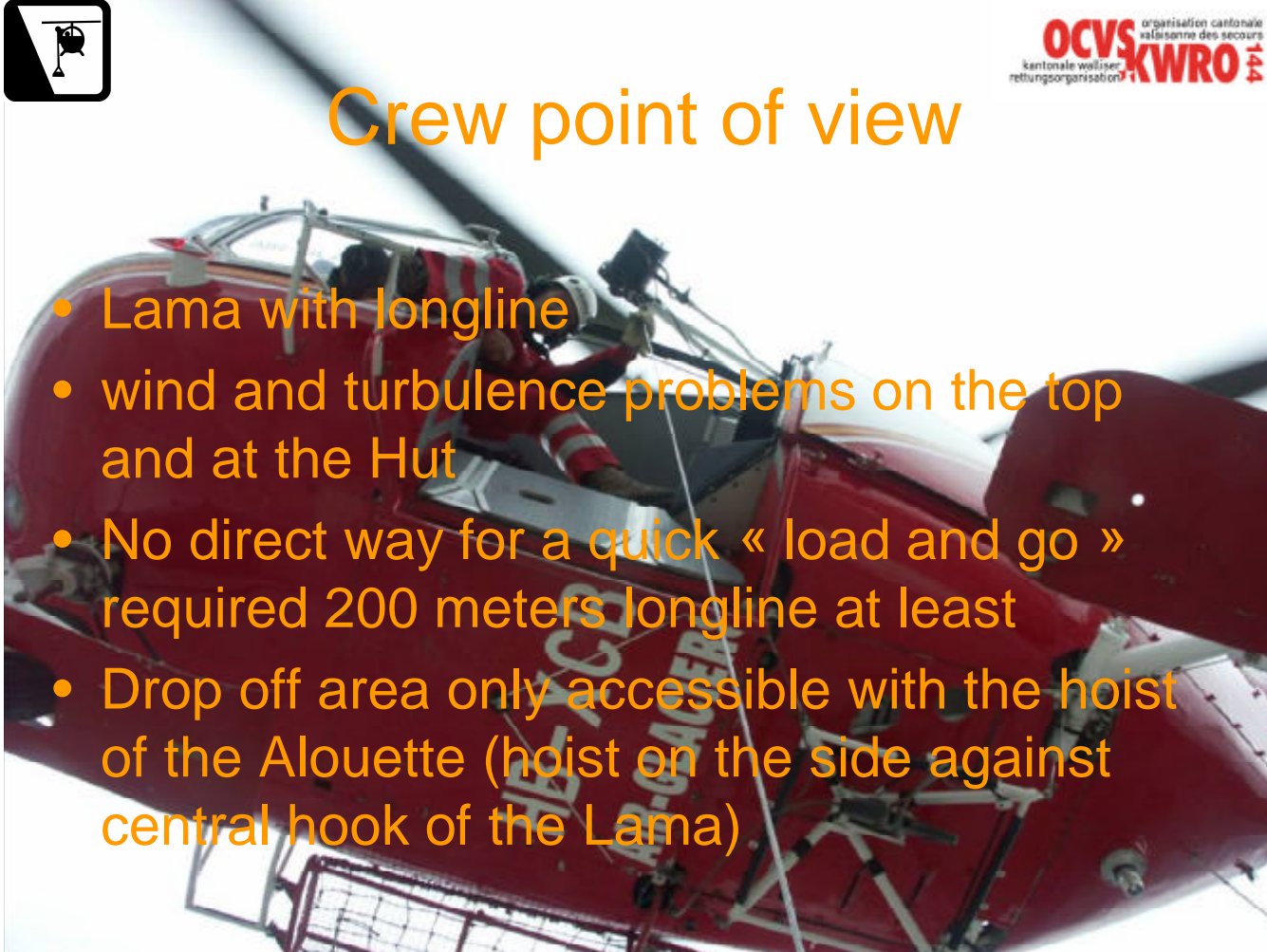
While hoisting the terrestrial operation was suspended to avoid rock fall even if the helicopter was not directly underneath (zoom effect of the picture).





Crew point of view

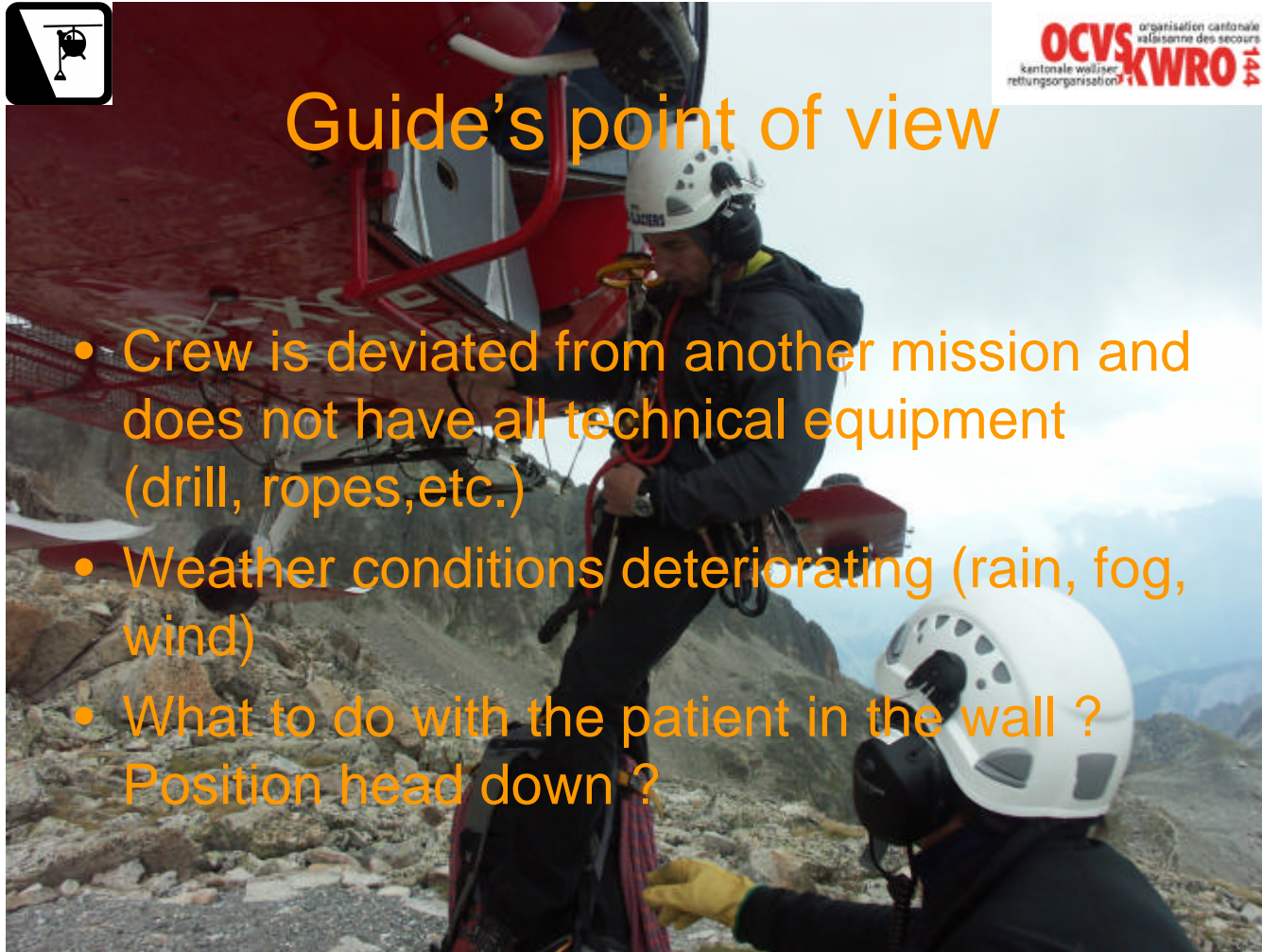
- Lama with longline
- wind and turbulence problems on the top and at the Hut
- No direct way for a quick « load and go » required 200 meters longline at least
- Drop off area only accessible with the hoist of the Alouette (hoist on the side against central hook of the Lama)





Guide's point of view

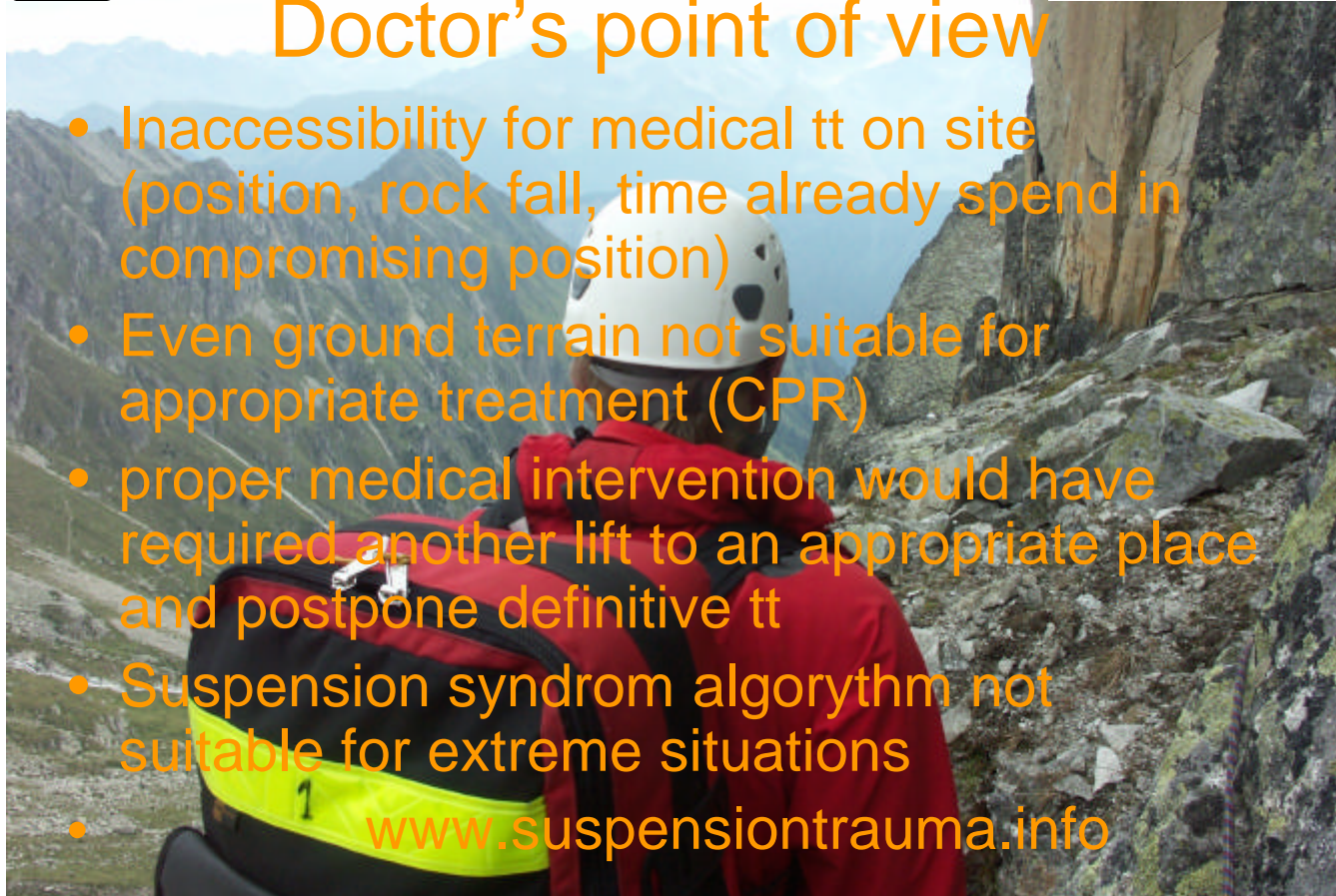
- Crew is deviated from another mission and does not have all technical equipment (drill, ropes, etc.)
- Weather conditions deteriorating (rain, fog, wind)
- What to do with the patient in the wall ?
Position head down ?





Doctor's point of view

- Inaccessibility for medical tt on site (position, rock fall, time already spend in compromising position)
- Even ground terrain not suitable for appropriate treatment (CPR)
- proper medical intervention would have required another lift to an appropriate place and postpone definitive tt
- Suspension syndrom algorithm not suitable for extreme situations
- www.suspensiontrauma.info





OCVS organisation cantonale
volontaire
kantonale wölliser
rettungsorganisation
KWRO 144



Thank you for your attention