

# Searching for Missing People



# IKAR Statistics 1998 - 2002

	<1000	1001–2000	2001-3000	3001-4000	<5000
<b>1998</b>	2559	3408	1618	11	0
<b>1999</b>	1271	3439	1009	22	0
<b>2000</b>	7421	6195	1212	35	1
<b>2001</b>	5750	7649	1102	27	1
<b>2002</b>	3331	1337	397	74	22

56%

- What is happening in that elevation range?

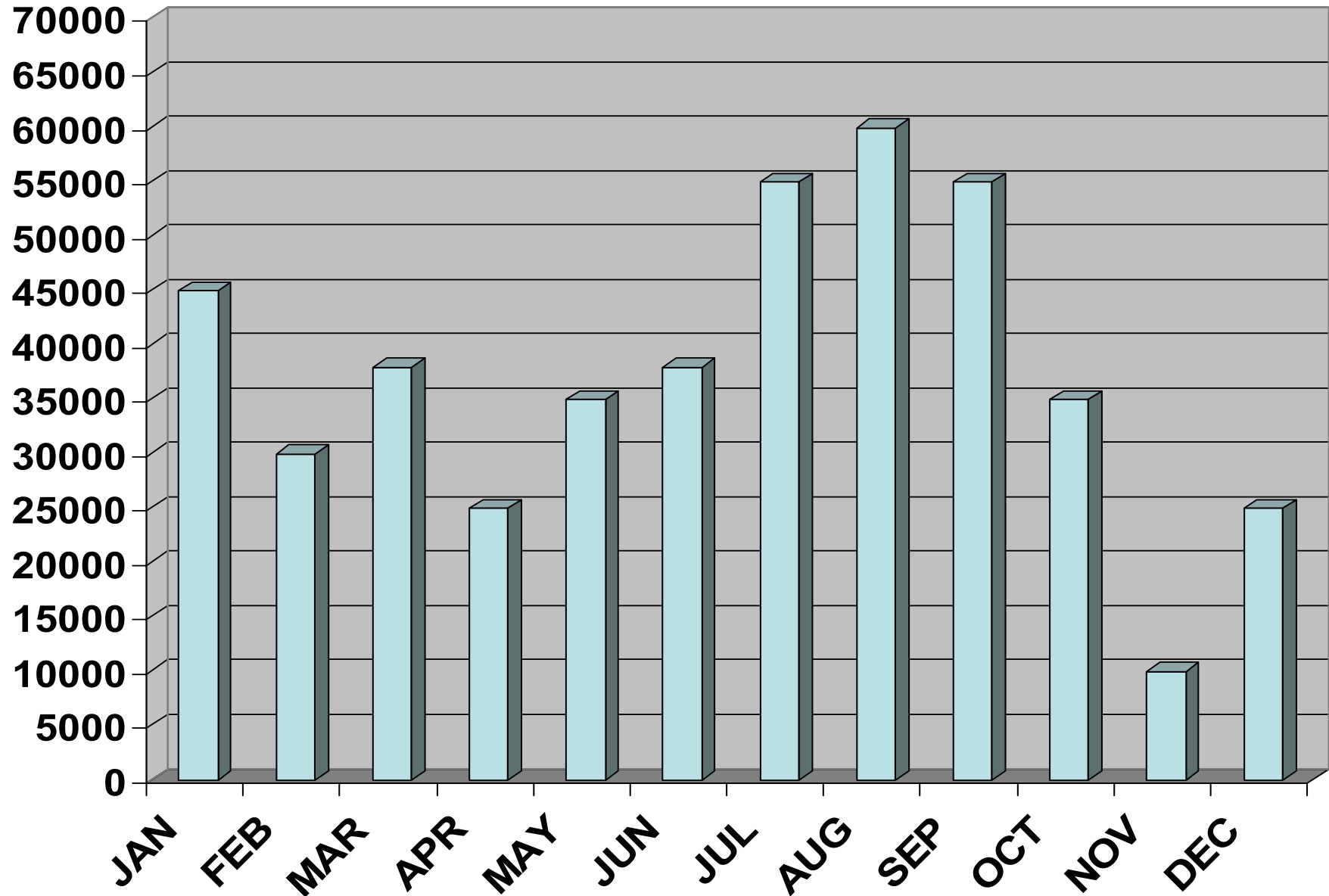
-What are the problems of the rescuers in the countries with this type of mountains?

- Which are the most difficult rescue missions?





# Annual Tourist Activity







ion,  
ities,  
mountain  
, fishing,  
herbs, etc.

ed

ate

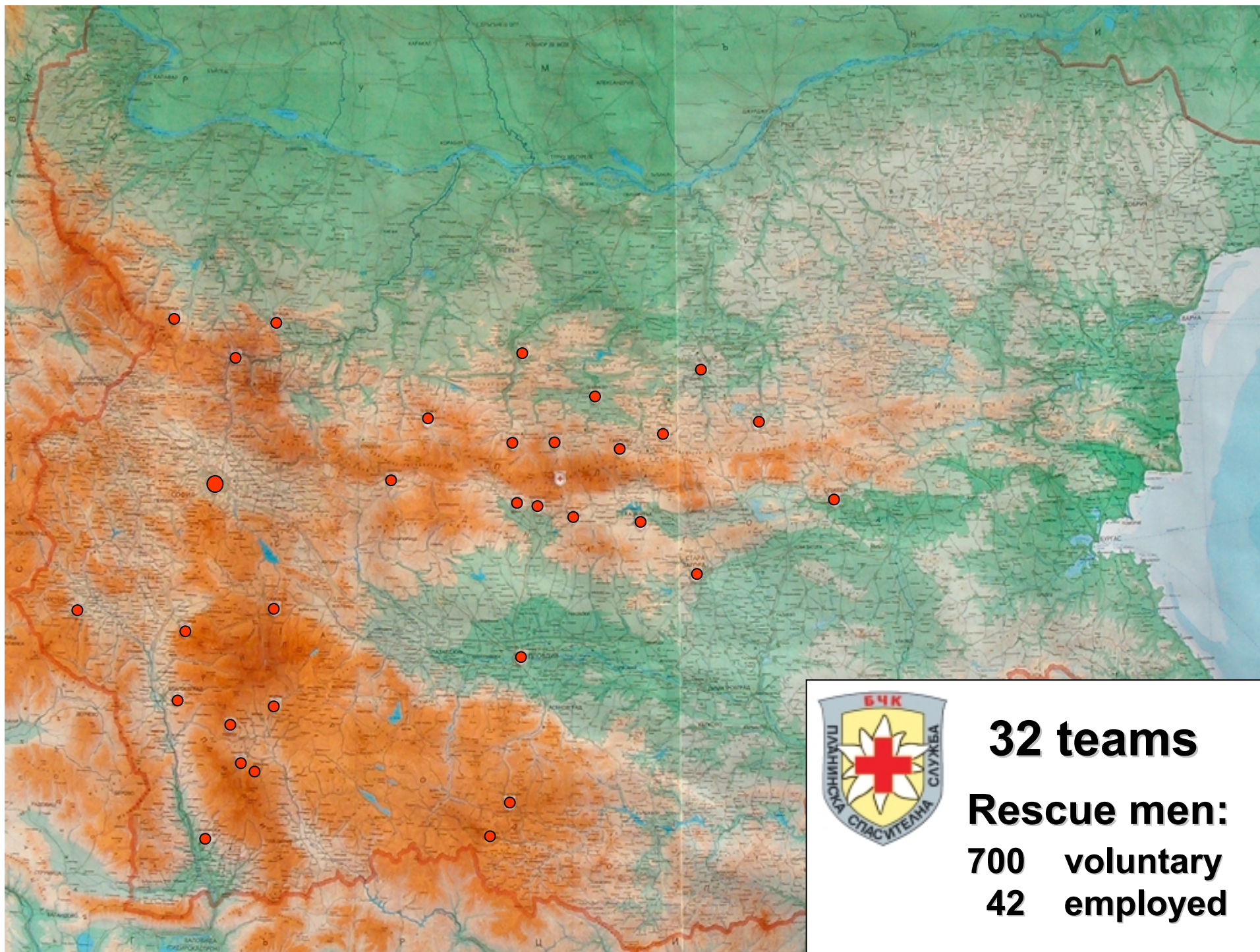
**Weath**

**Weath**



*range*





**32 teams**

**Rescue men:**

<b>700</b>	<b>voluntary</b>
<b>42</b>	<b>employed</b>

		Rescue Missions By Type							Victims		
Year	Total	Transport	Search	Rocks	Avalanche	Other	Rescuers	Hours	Healthy	Injured	Dead
1993	56	18	26	1	0	11	376	5060	89	31	8
1994	49	33	14	0	0	2	331	2056	49	26	18
1995	34	25	20	0	0	3	305	455	16	28	11
1996	43	21	10	2	3	2	294	317	22	18	10
1997	49	25	21	1	1	1	351	567	18	39	15
1998	66	30	29	3	1	3	435	1166	13	46	13
1999	26	15	11	0	0	0	181	466	9	18	9
2000	48	26	15	4	0	3	325	1918	13	29	11
2001	42	23	17	1	0	1	117	267	17	24	4
2002	28	14	11	1	1	1	277	692	110	38	8

40%





# **Problems related to the mountaineers**

- Lots of possible starting points and many unmarked trails.**
- Insufficient information about the planned route.**
- Underestimating of the conditions in the mountains**
- Breaking loose from the group.**
- Not informing relatives about their precise plans.**



# Counteraction of the BMRS

- Focusing the attention of the related structures to these problems .
- Assisting the park authorities for marking the routes.
- Public announcements of recommended behavior in the mountains.
- Daily bulletin about the meteo conditions and the snow cover in the mountains.

# **Some organizational problems inside BMRS**

- Insufficient interaction with the Police.**

- Difficult phone and radio communication in some mountain ranges.**

- Inappropriate involvement of the relatives and public media in the course of action.**



# **What we are doing ?**

**-Working on an official paper regarding the responsibilities of Police and MRS.**

**-Assisting cellular operators in development of their networks in the mountains**

# **Tactical problems inside BMRS**

- It's difficult to take a decision about the start of operational activities on the terrain.**
- Using helicopters is a financial problem .**
- Different views in the MRS towards the tactics of such a rescue mission.**
- No M 1:25 000 maps available.**
- Inaccurate definition of the thoroughness of searching the terrain.**
- It's difficult to take a decision about the end or postponing of the operational activities**



